

### NOTES

STIRRUPS IN CAP MAY BE SHIFTED AS NECESSARY TO CLEAR ANCHOR BOLTS.

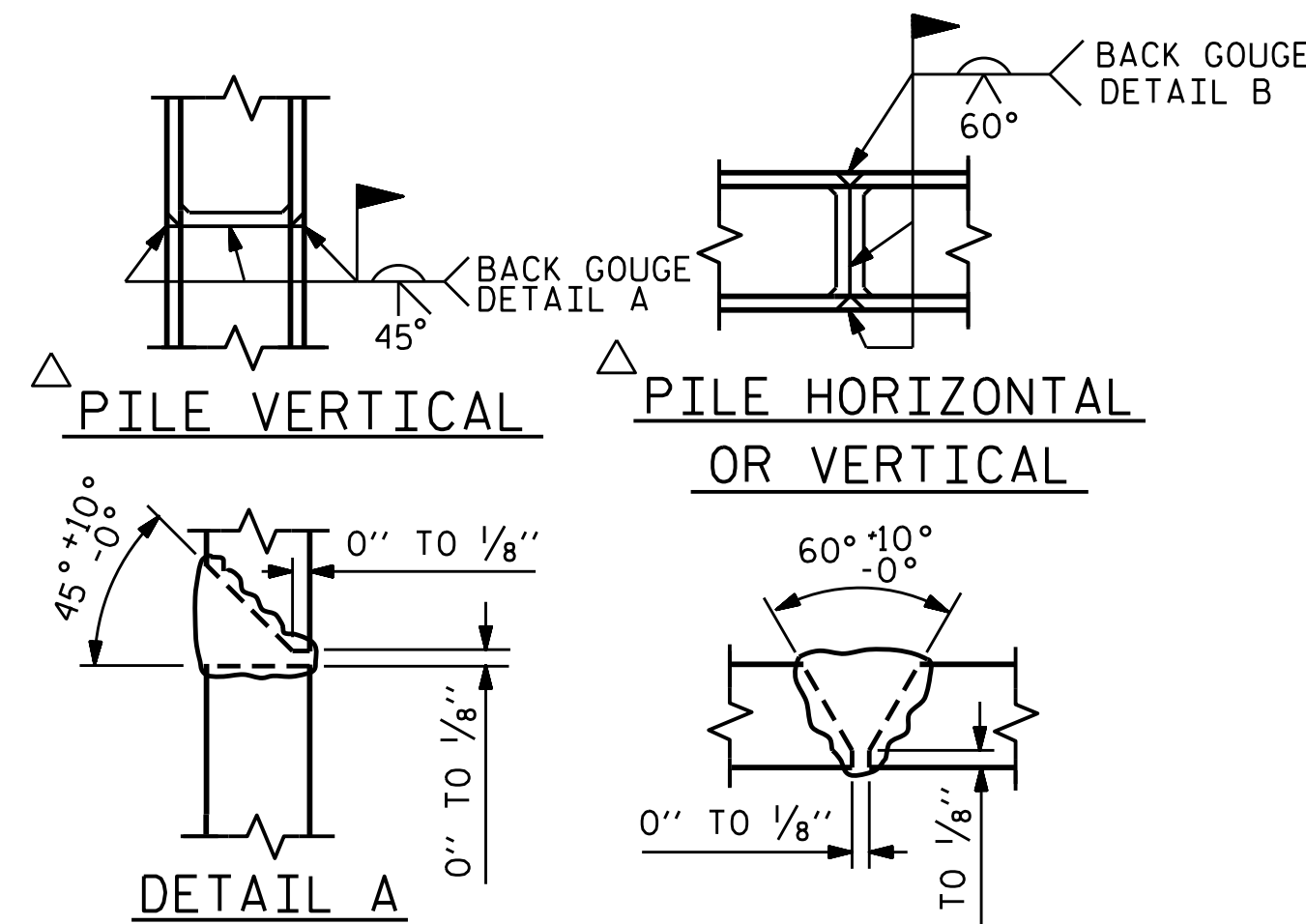
FOR PIPE INSERT DETAILS, SEE BEARINGS SHEET.

BACKWALL SHALL BE PLACED BEFORE APPLYING THE EPOXY PROTECTIVE COATING.

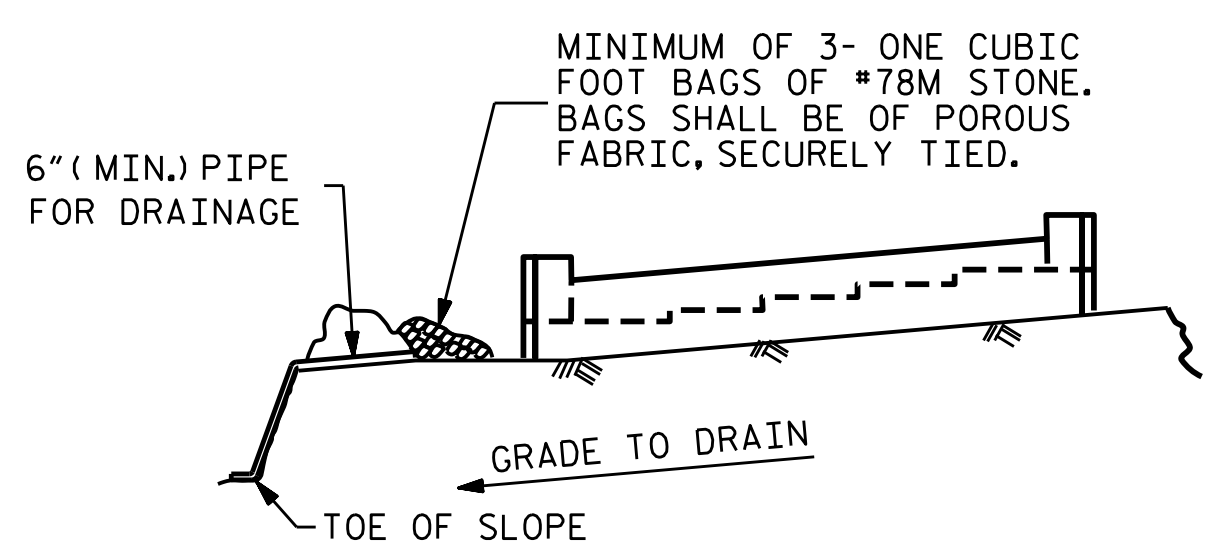
THE TOP SURFACE AREAS OF THE END CAP SHALL BE CURED IN ACCORDANCE WITH THE STANDARD SPECIFICATIONS EXCEPT THE MEMBRANE CURING COMPOUND METHOD SHALL NOT BE USED.

THE TOP SURFACE OF THE CAP EXCEPT THE BRIDGE SEAT BUILDUPS SHALL BE SLOPED TRANSVERSELY FROM THE FILL FACE TO THE BACK FACE AT THE RATE OF 2%.

FOR MSE RETAINING WALLS, SEE SPECIAL PROVISIONS.



### PILE SPLICE DETAILS

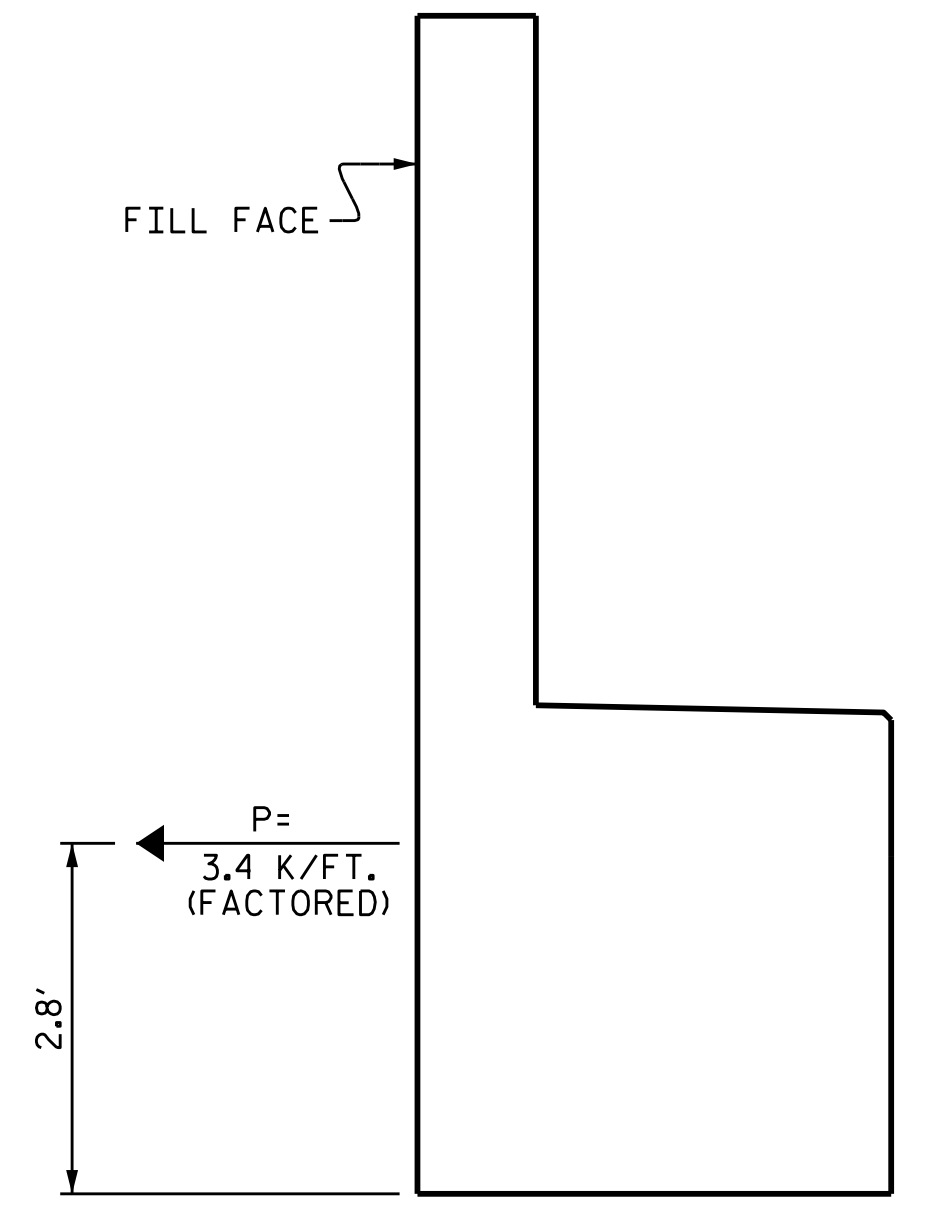


BAGGED STONE AND PIPE SHALL BE PLACED IMMEDIATELY AFTER COMPLETION OF END BENT EXCAVATION. PIPE MAY BE EITHER CONCRETE, CORRUGATED STEEL, CORRUGATED ALUMINUM ALLOY, OR CORRUGATED PLASTIC. PERFORATED PIPE WILL NOT BE ALLOWED.

BAGGED STONE SHALL REMAIN IN PLACE UNTIL THE ENGINEER DIRECTS THAT IT BE REMOVED. THE CONTRACTOR SHALL REMOVE AND DISPOSE OF SILT ACCUMULATIONS AT BAGGED STONE WHEN SO DIRECTED BY THE ENGINEER. BAGS SHALL BE REMOVED AND REPLACED WHENEVER THE ENGINEER DETERMINES THAT THEY HAVE DETERIORATED AND LOST THEIR EFFECTIVENESS.

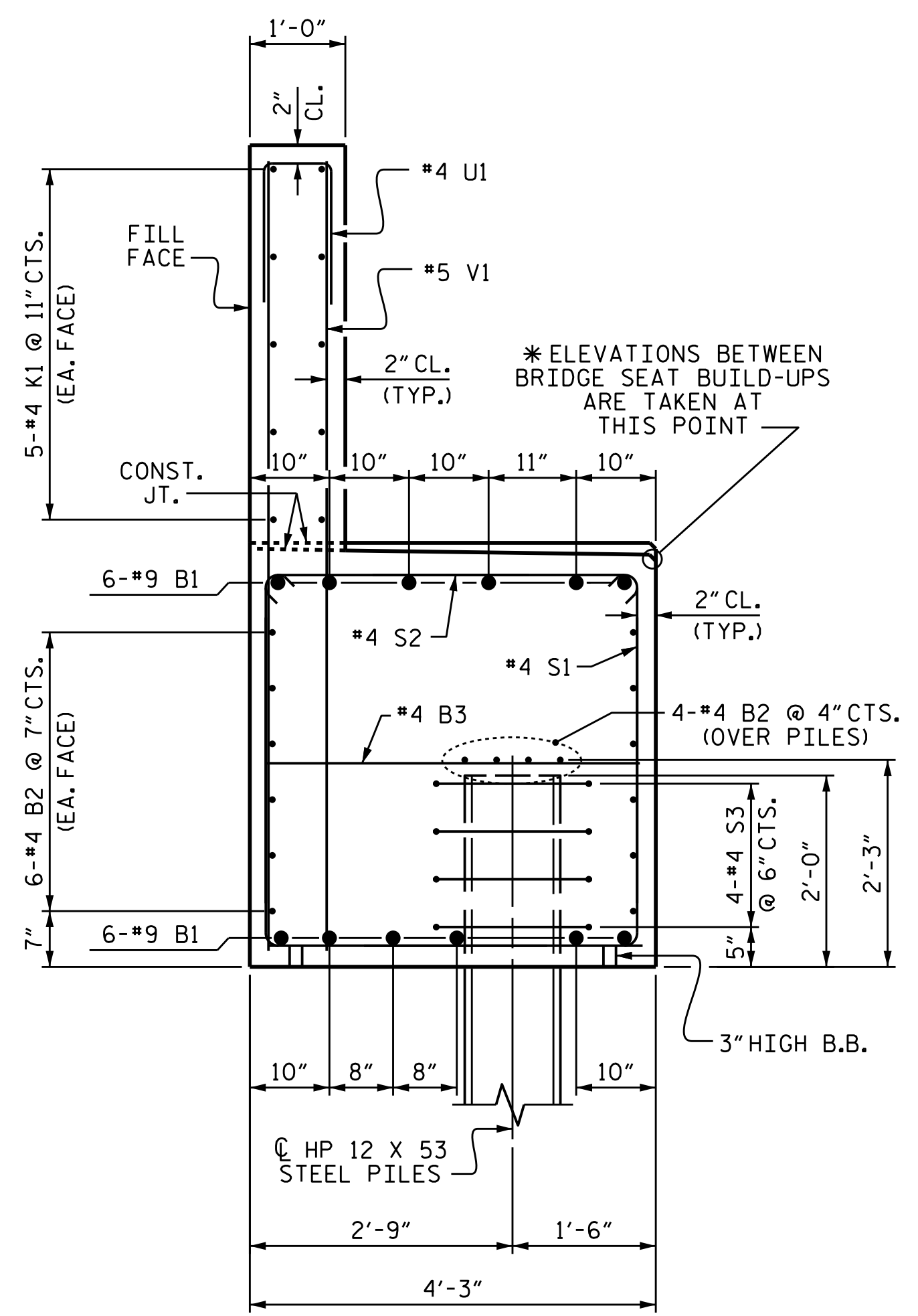
NO SEPARATE PAYMENT WILL BE MADE FOR THIS WORK AND THE ENTIRE COST OF THIS WORK SHALL BE INCLUDED IN THE UNIT CONTRACT PRICE BID FOR THE SEVERAL PAY ITEMS.

### TEMPORARY DRAINAGE AT END BENT

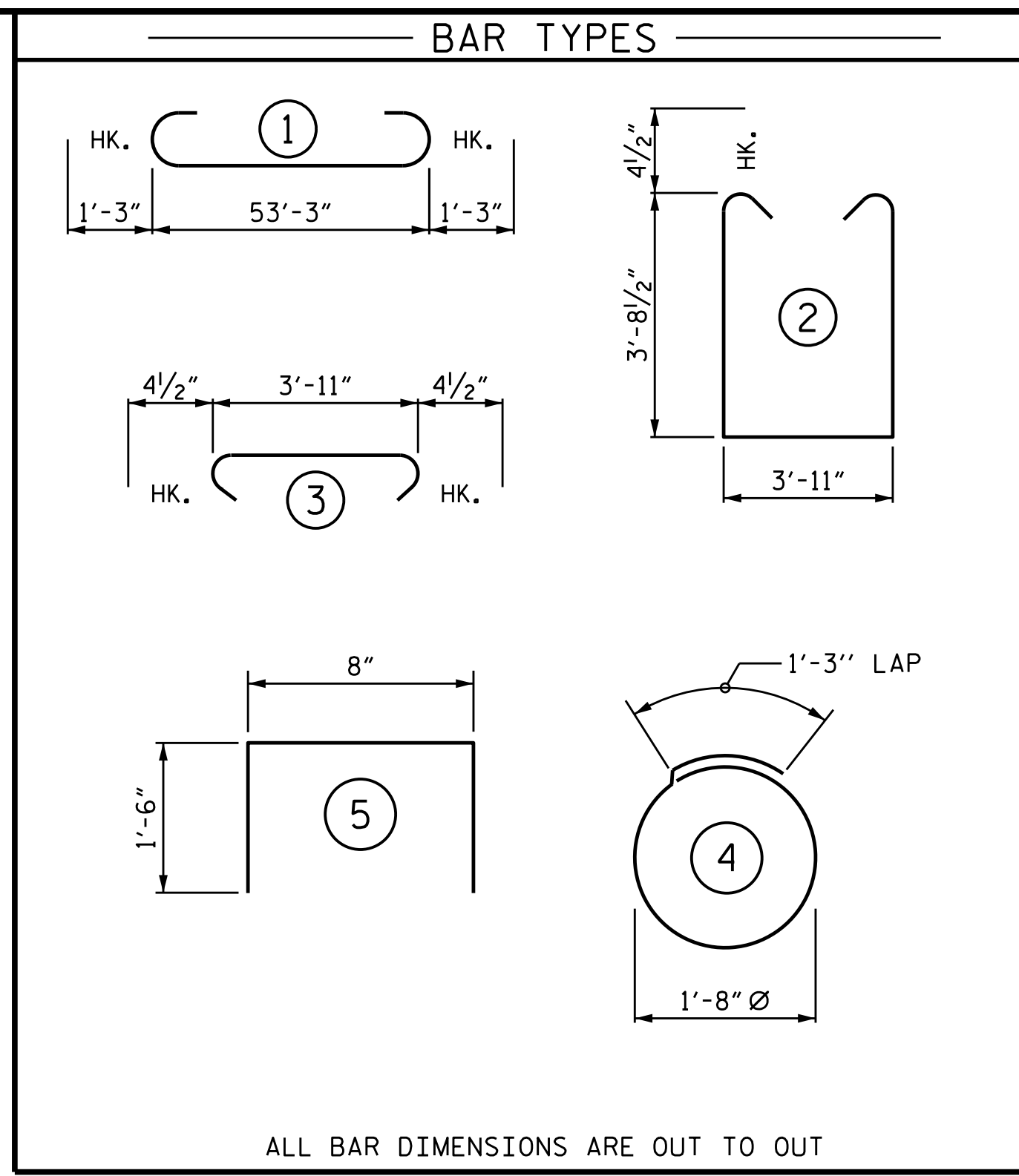


### TIE BACK DETAILS

(DETAIL SHOWING TIE BACK RESTRAINT FOR END BENT)



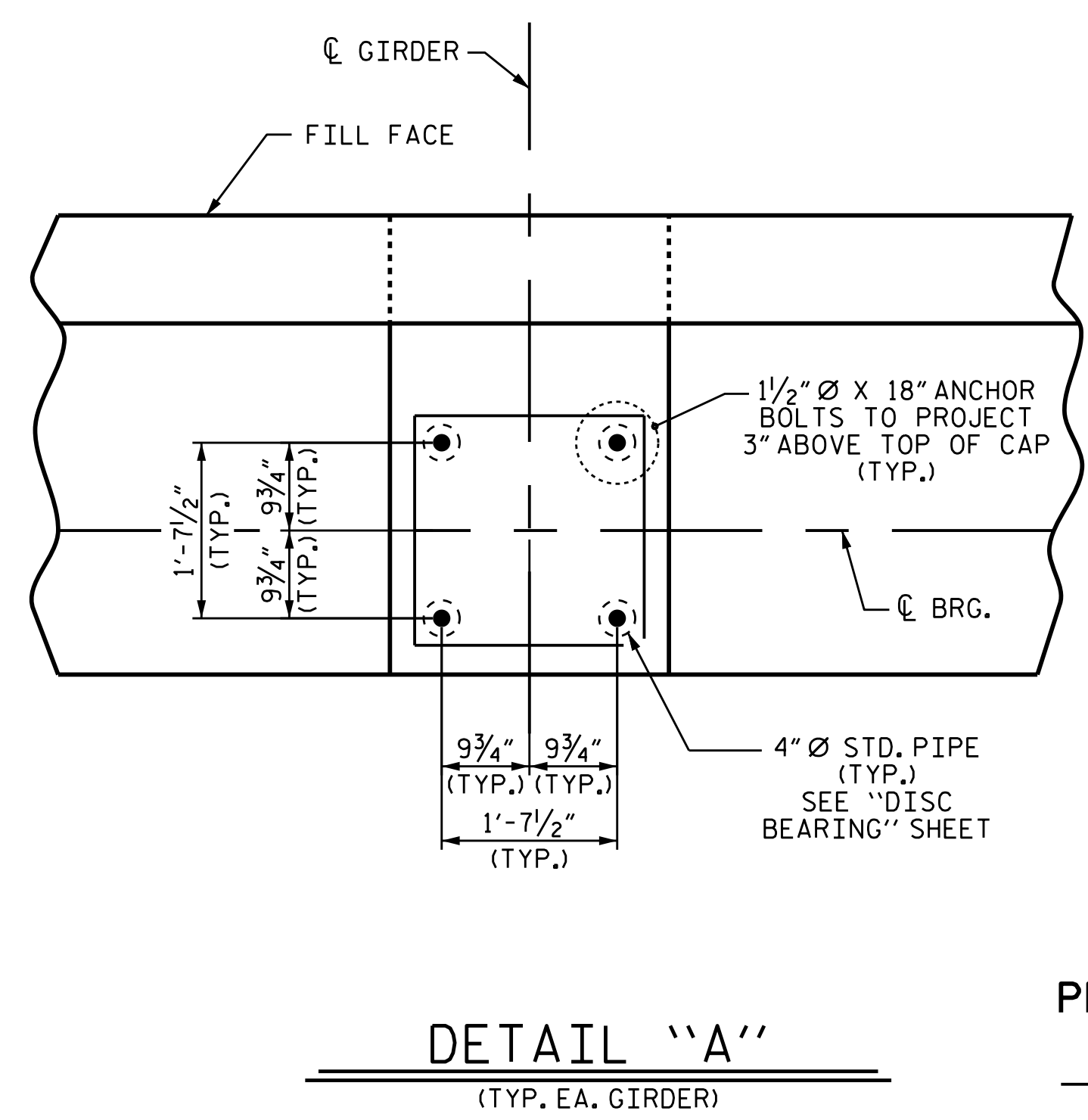
### SECTION THRU CAP



ALL BAR DIMENSIONS ARE OUT TO OUT

### BILL OF MATERIAL

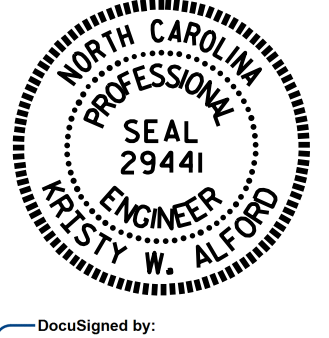
END BENT 2					
BAR	NO.	SIZE	TYPE	LENGTH	WEIGHT
B1	12	#9		55'-9"	2275
B2	32	#4	STR	27'-11"	597
B3	13	#4	STR	3'-11"	34
K1	20	#4	STR	27'-11"	373
S1	66	#4	2	12'-1"	533
S2	66	#4	3	4'-8"	206
S3	36	#4	4	6'-6"	156
U1	54	#4	5	3'-8"	132
V1	88	#5	STR	8'-1"	742
V2	20	#5	STR	7'-5"	155
REINFORCING STEEL					5203 LBS.
CLASS A CONCRETE BREAKDOWN					
POUR #1 CAP					35.7 C.Y.
POUR #2 BACKWALL					8.3 C.Y.
TOTAL CLASS A CONCRETE					44.0 C.Y.
NO. = 9 HP 12 X 53 STEEL PILES					405 LIN. FT.



### DETAIL "A"

(TYP. EA. GIRDER)

PROJECT NO. B-5121/B-5317  
 WAKE COUNTY  
 STATION: 20+19.94 -FLYOVER-  
 SHEET 2 OF 2



STATE OF NORTH CAROLINA  
 DEPARTMENT OF TRANSPORTATION  
 RALEIGH  
 SUBSTRUCTURE  
 END BENT 2

DRAWN BY :	J.P. ADAMS	DATE :	1/2016
CHECKED BY :	I.L. AVERETTE	DATE :	2/2016
DESIGN ENGINEER OF RECORD :	R.L. CHESSON	DATE :	2/2016

DOCUMENT NOT CONSIDERED FINAL UNLESS ALL SIGNATURES COMPLETED

REVISIONS				SHEET NO.	
NO.	BY:	DATE:	NO.	BY:	DATE:
1			3		
2			4		