

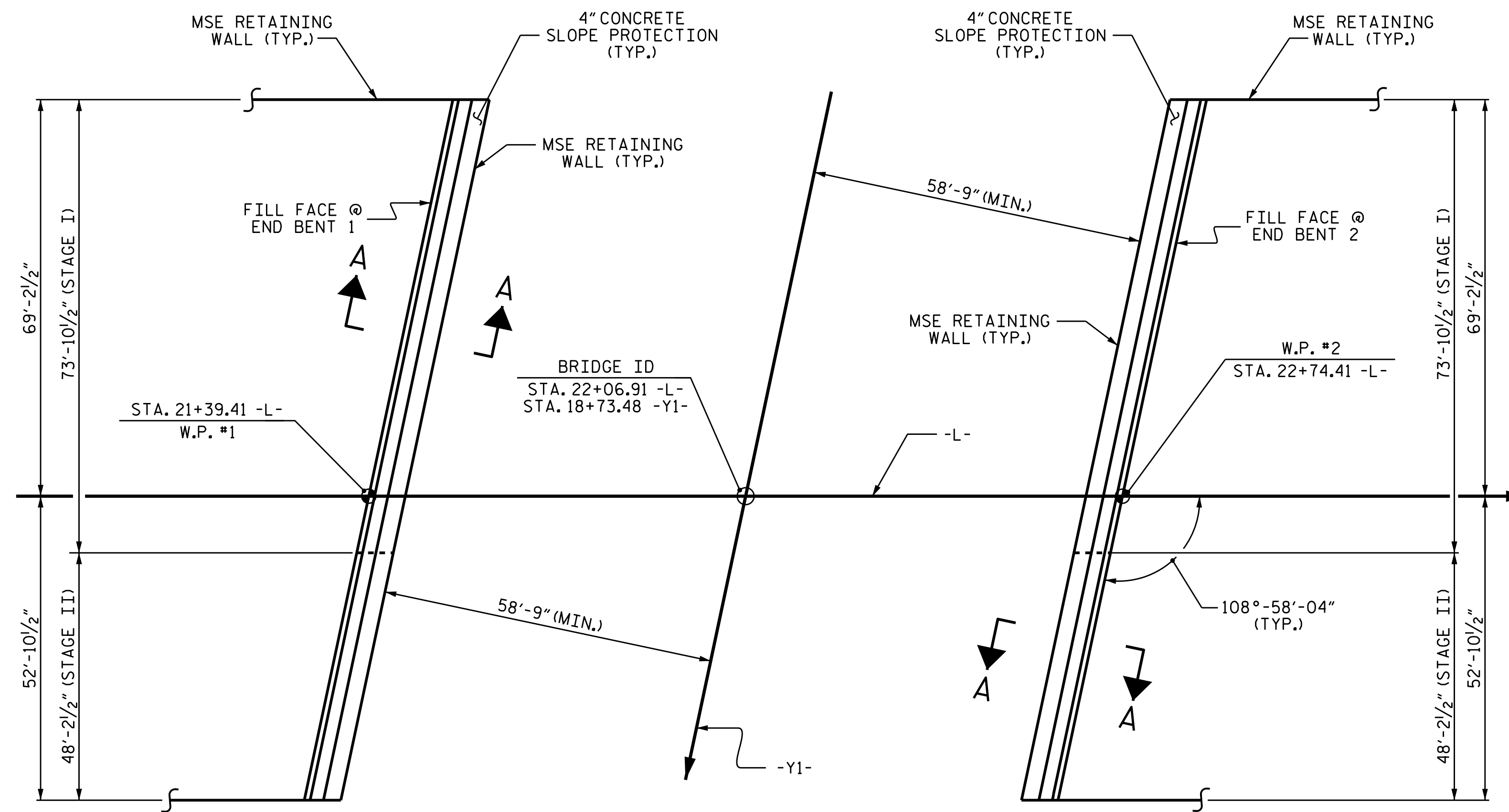
NOTES

SLOPE PROTECTION SHALL BE PLACED UNDER THE ENDS OF THE BRIDGE AS SHOWN IN THE DETAILS. MEASUREMENT AND PAYMENT SHALL BE AS PRESCRIBED IN SECTION 462 OF THE STANDARD SPECIFICATIONS.

SLOPE PROTECTION SHALL CONSIST OF 4" POURED-IN-PLACE CONCRETE PAVING AS SHOWN IN THE DETAILS ON THIS SHEET. CONCRETE SHALL BE CLASS "B". THE CONCRETE SURFACE SHALL BE FLOATED WITH A WOODEN FLOAT AND FINISHED. WELDED WIRE FABRIC REINFORCING SHALL BE 6 X 6 - W1.4 X W1.4, 60" WIDE. SLOPE PROTECTION SHALL BE POURED IN 5' STRIPS AS SHOWN IN THE "POURING DETAIL" WITH 2'-0" LONG #4 BARS PLACED ALONG THE SLOPE BETWEEN STRIPS AT 1'-6" MAXIMUM SPACING. SLOPE PROTECTION MAY BE POURED IN ALTERNATE 4' AND 5' STRIPS AS SHOWN IN THE "OPTIONAL POURING DETAIL" WITH ADJACENT RUNS OF WELDED WIRE FABRIC LAPPING AT LEAST 6". THE COST OF THE WELDED WIRE FABRIC AND #4 BARS, IF USED, SHALL BE INCLUDED IN THE CONTRACT UNIT PRICE BID PER SQUARE YARD FOR SLOPE PROTECTION.

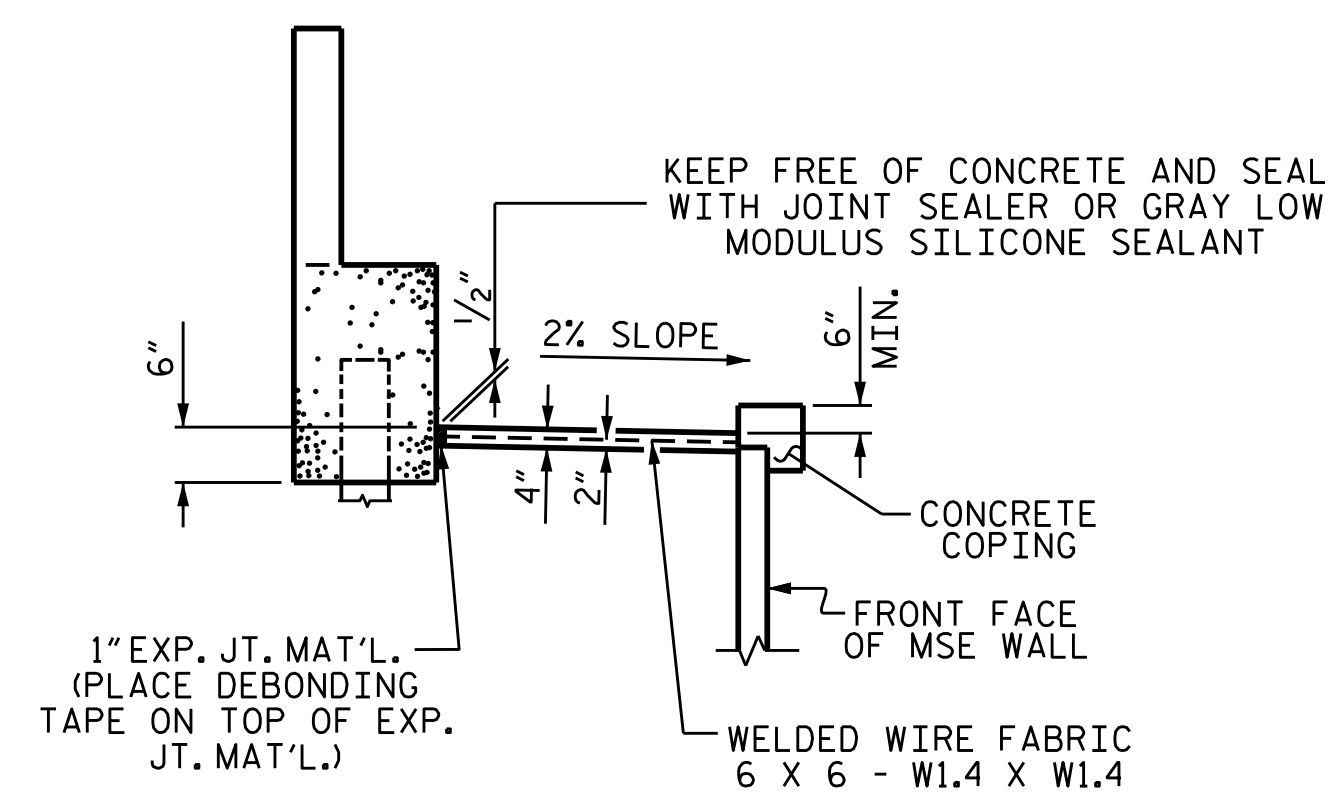
BRIDGE @ STA. 22+06.91 -L-	4" SLOPE PROTECTION SQUARE YARDS		* WELDED WIRE FABRIC 60 INCHES WIDE APPROX. L.F.	
	STAGE I	STAGE II	STAGE I	STAGE II
END BENT 1	25	15	50	30
END BENT 2	25	15	50	30

* QUANTITY SHOWN IS BASED ON 5' POURS.

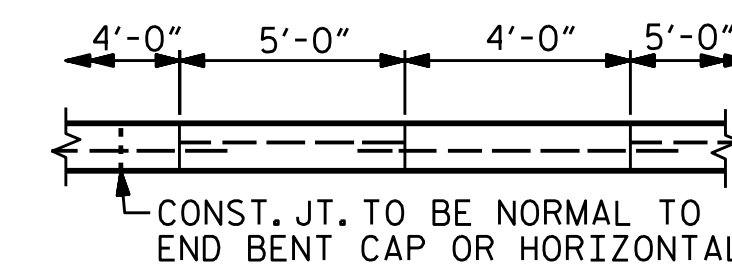


PLAN

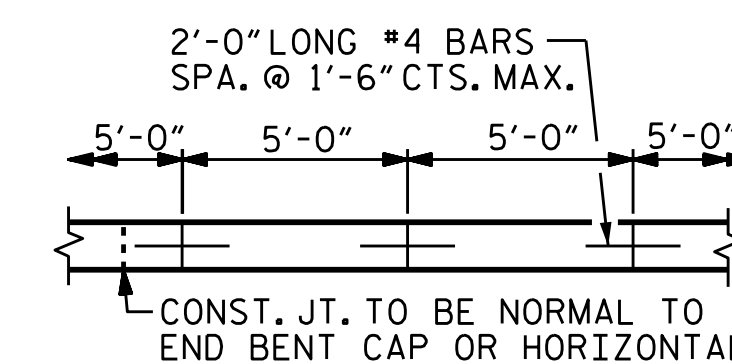
PILES NOT SHOWN IN PLAN VIEW FOR CLARITY



SECTION A-A

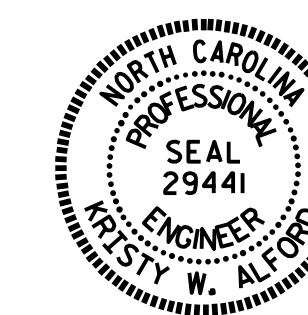


POUR A 4'-0" STRIP FIRST.
OPTIONAL POURING DETAIL



POURING DETAIL

PROJECT NO. B-5121/B-5317
WAKE COUNTY
STATION: 22+06.91 -L-



DocuSigned by:
Kristy W. Alford
7245888308FAE
4/13/2016

STATE OF NORTH CAROLINA
DEPARTMENT OF TRANSPORTATION
RALEIGH

SLOPE PROTECTION DETAILS

DRAWN BY : M.M. AHMED DATE : 2/2016
CHECKED BY : J.P. ADAMS DATE : 2/2016
DESIGN ENGINEER OF RECORD : I.L. AVERETTE DATE : 2/2016

DOCUMENT NOT CONSIDERED
FINAL UNLESS ALL
SIGNATURES COMPLETED

REVISIONS						SHEET NO.
NO.	BY:	DATE:	NO.	BY:	DATE:	S-33
1			3			TOTAL SHEETS
2			4			110