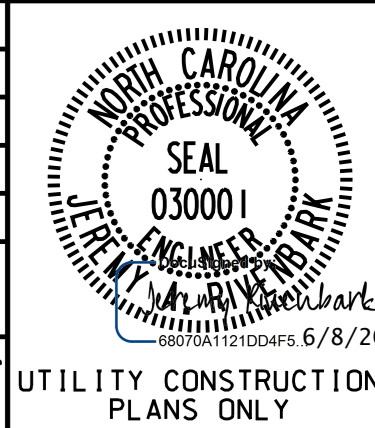


DESIGNED BY: DGB
DRAWN BY: JGB
CHECKED BY: JRP
APPROVED BY: JAR
REVISED:
NORTH CAROLINA DEPARTMENT OF TRANSPORTATION
UTILITIES ENGINEERING SEC. PHONE: (919) 707-6690 FAX: (919) 250-4151



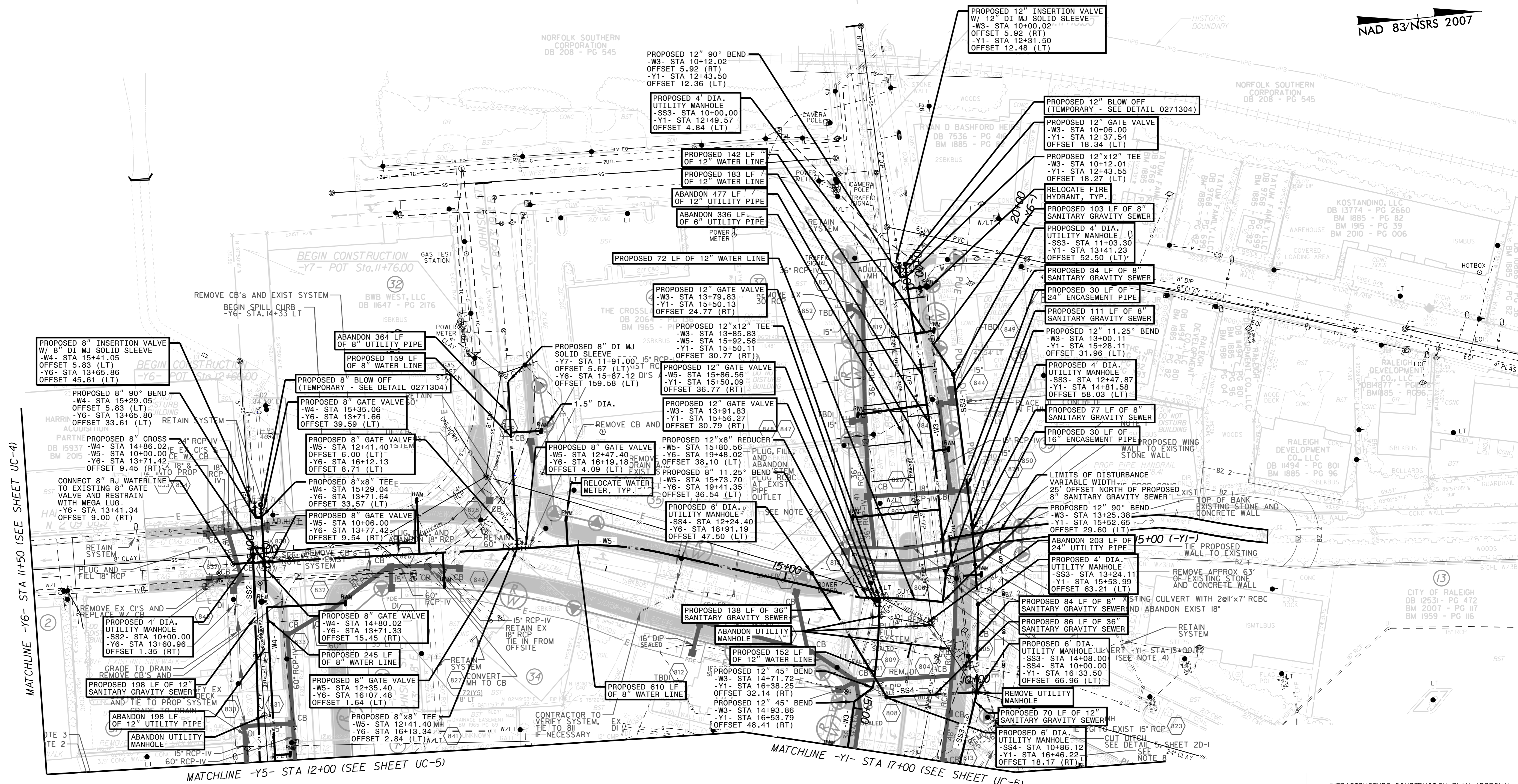
**UTILITY CONSTRUCTION**

NAD 83/NSRS 2007

**QUANTITY TOTALS**

RELOCATE FIRE HYDRANT:	2
RELOCATE WATER METER:	11
SANITARY SEWER CLEAN-OUT:	20

33 HESTER & HESTER DB 8181 - PG 1853 BM 1885 - PG 104	36 EDWIN E FLYTHE, JR DB 3726 - PG 580 BM 1885 - PG 82 BM 1977 - PG 393	39 JAMES H ANDERSON CO DB 5940 - PG 289 BM 1993 - PG 1441
34 MANN FAMILY PROPERTIES OF RALEIGH DB 1802 - PG 1658	37 RICHARD GARDNER DB 8613 - PG 2425	41 ARCHIE LINWOOD KING SUCCESSOR TRUSTEE DB 5369 - PG 541 BM 1947 - PG 73
35 CHAUCER INVESTMENTS INC DB 13332 - PG 957 BM 1997 - PG 799	38 MARGARET ALTMAN MANN DB 2989 - PG 318	



REVISIONS

6/8/2016 K:\PAL\_Roadway\01036256 - Capital Boulevard\Utilities\Engineering\UC-Pro\B5121\_B5317\_uc08\_psh.dgn

ALL CONSTRUCTION TO BE IN ACCORDANCE WITH ALL CITY OF RALEIGH AND/OR NC DOT STANDARDS AND SPECIFICATIONS.

**PUBLIC**  
SEWER COLLECTION / EXTENSION SYSTEM

THE CITY OF RALEIGH CONSENTS TO THE CONNECTION AND EXTENSION OF THE CITY'S PUBLIC SEWER SYSTEM AS SHOWN ON THIS PLAN. THE MATERIAL AND CONSTRUCTION METHODS USED FOR THIS PROJECT SHALL CONFORM TO THE STANDARDS AND SPECIFICATIONS OF THE CITY'S PUBLIC UTILITIES HANDBOOK.

CITY OF RALEIGH  
PUBLIC UTILITIES DEPARTMENT PERMIT # \_\_\_\_\_  
AUTHORIZATION TO CONSTRUCT \_\_\_\_\_  
DATE \_\_\_\_\_

**PUBLIC**  
WATER DISTRIBUTION / EXTENSION SYSTEM

THE CITY OF RALEIGH CONSENTS TO THE CONNECTION AND EXTENSION OF THE CITY'S PUBLIC WATER SYSTEM AS SHOWN ON THIS PLAN. THE MATERIAL AND CONSTRUCTION METHODS USED FOR THIS PROJECT SHALL CONFORM TO THE STANDARDS AND SPECIFICATIONS OF THE CITY'S PUBLIC UTILITIES HANDBOOK.

CITY OF RALEIGH  
PUBLIC UTILITIES DEPARTMENT PERMIT # \_\_\_\_\_  
AUTHORIZATION TO CONSTRUCT \_\_\_\_\_  
DATE \_\_\_\_\_

INFRASTRUCTURE CONSTRUCTION PLAN APPROVAL

CITY OF RALEIGH - PLANS AUTHORIZED FOR CONSTRUCTION

All Construction must be in accordance with all Local, State, and Federal Rules and Regulations.	_____
TRANSPORTATION SERVICES	_____
PUBLIC UTILITIES	_____
STORMWATER	_____
PLANNING	_____
FIRE	_____
URBAN FORESTRY	_____