

PROJECT REFERENCE NO.	SHEET NO.
B-5121 / B-5317	UC-4
DESIGNED BY: DGB	
DRAWN BY: JGB	
CHECKED BY: JRP	
APPROVED BY: JAR	
REVISED:	
NORTH CAROLINA DEPARTMENT OF TRANSPORTATION UTILITIES ENGINEERING SECTION PHONE: (919) 707-6690 FAX: (919) 250-4151	

**UTILITY CONSTRUCTION**

NAD 83/NSRS 2007

- 3 RALEIGH DEVL. LLC  
DB 12835 - PG 2740  
BM 1960 - PG 241
- 4 WILLIAM L. CARTER  
DB 6339 - PG 820  
BM 1979 - PG 560
- 5 WILLIAM L. CARTER, JR  
DB 4382 - PG 9
- 6 ED. CHARITABLE DVLPMTS  
PROJ. INC  
DB 7559 - PG 768

QUANTITY TOTALS	
RELOCATE FIRE HYDRANT:	1
RELOCATE WATER METER:	2
RECONNECT WATER METER:	2
SANITARY SEWER CLEAN-OUT:	4

ALL CONSTRUCTION TO BE IN ACCORDANCE WITH ALL CITY OF RALEIGH AND/OR NCDOT STANDARDS AND SPECIFICATIONS.

**PUBLIC**  
WATER DISTRIBUTION / EXTENSION SYSTEM  
THE CITY OF RALEIGH CONSENTS TO THE CONNECTION AND EXTENSION OF THE CITY'S PUBLIC WATER SYSTEM AS SHOWN ON THIS PLAN. THE MATERIAL AND CONSTRUCTION METHODS USED FOR THIS PROJECT SHALL CONFORM TO THE STANDARDS AND SPECIFICATIONS OF THE CITY'S PUBLIC UTILITIES HANDBOOK.

CITY OF RALEIGH  
PUBLIC UTILITIES DEPARTMENT PERMIT # \_\_\_\_\_  
AUTHORIZATION TO CONSTRUCT \_\_\_\_\_  
DATE \_\_\_\_\_

**PUBLIC**  
SEWER COLLECTION / EXTENSION SYSTEM  
THE CITY OF RALEIGH CONSENTS TO THE CONNECTION AND EXTENSION OF THE CITY'S PUBLIC SEWER SYSTEM AS SHOWN ON THIS PLAN. THE MATERIAL AND CONSTRUCTION METHODS USED FOR THIS PROJECT SHALL CONFORM TO THE STANDARDS AND SPECIFICATIONS OF THE CITY'S PUBLIC UTILITIES HANDBOOK.

CITY OF RALEIGH  
PUBLIC UTILITIES DEPARTMENT PERMIT # \_\_\_\_\_  
AUTHORIZATION TO CONSTRUCT \_\_\_\_\_  
DATE \_\_\_\_\_

INFRASTRUCTURE CONSTRUCTION PLAN APPROVAL  
CITY OF RALEIGH - PLANS AUTHORIZED FOR CONSTRUCTION

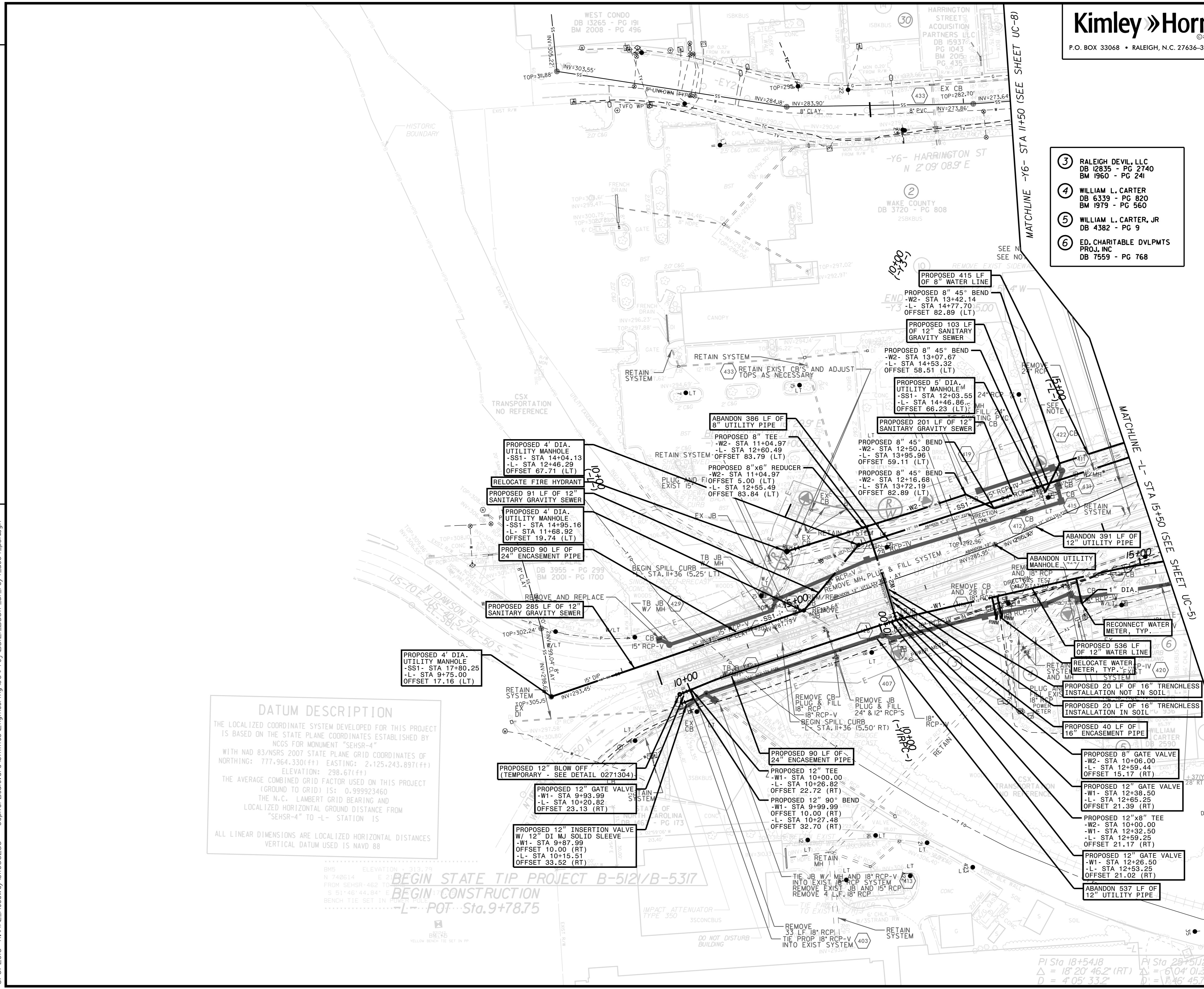
All Construction must be in accordance with all Local, State, and Federal Rules and Regulations.  
TRANSPORTATION SERVICES \_\_\_\_\_  
PUBLIC UTILITIES \_\_\_\_\_  
STORMWATER \_\_\_\_\_  
PLANNING \_\_\_\_\_  
FIRE \_\_\_\_\_  
URBAN FORESTRY \_\_\_\_\_

REVISIONS

**DATUM DESCRIPTION**  
THE LOCALIZED COORDINATE SYSTEM DEVELOPED FOR THIS PROJECT IS BASED ON THE STATE PLANE COORDINATES ESTABLISHED BY NCGS FOR MONUMENT "SEHSR-4" WITH NAD 83/NSRS 2007 STATE PLANE GRID COORDINATES OF NORTHING: 777,964.330(±±) EASTING: 2,125,243.897(±±) ELEVATION: 298.67(±±)  
THE AVERAGE COMBINED GRID FACTOR USED ON THIS PROJECT (GROUND TO GRID) IS: 0.999923460  
THE N.C. LAMBERT GRID BEARING AND LOCALIZED HORIZONTAL GROUND DISTANCE FROM "SEHSR-4" TO L- STATION IS  
ALL LINEAR DIMENSIONS ARE LOCALIZED HORIZONTAL DISTANCES VERTICAL DATUM USED IS NAVD 88

BEGIN STATE TIP PROJECT B-5121/B-5317  
BEGIN CONSTRUCTION  
L- POT Sta. 9+78.75

6/8/2016 K:\RAL\_Roadway\01036256 - Capital Boulevard\Utilities\Engineering\UC-Proj\B5121-B5317-ut\_rty4\_uc04\_uc04\_pst\tdgn



MATCHLINE -Y6- STA 11+50 (SEE SHEET UC-8)

MATCHLINE -L- STA 15+40 (SEE SHEET UC-5)

PI Sta 18+54.8  
Δ = 18° 20' 46.2" (RT)  
D = 405' 33.2"

PI Sta 28+51.2  
Δ = 6° 04' 01.3"  
D = 1346' 45.7"