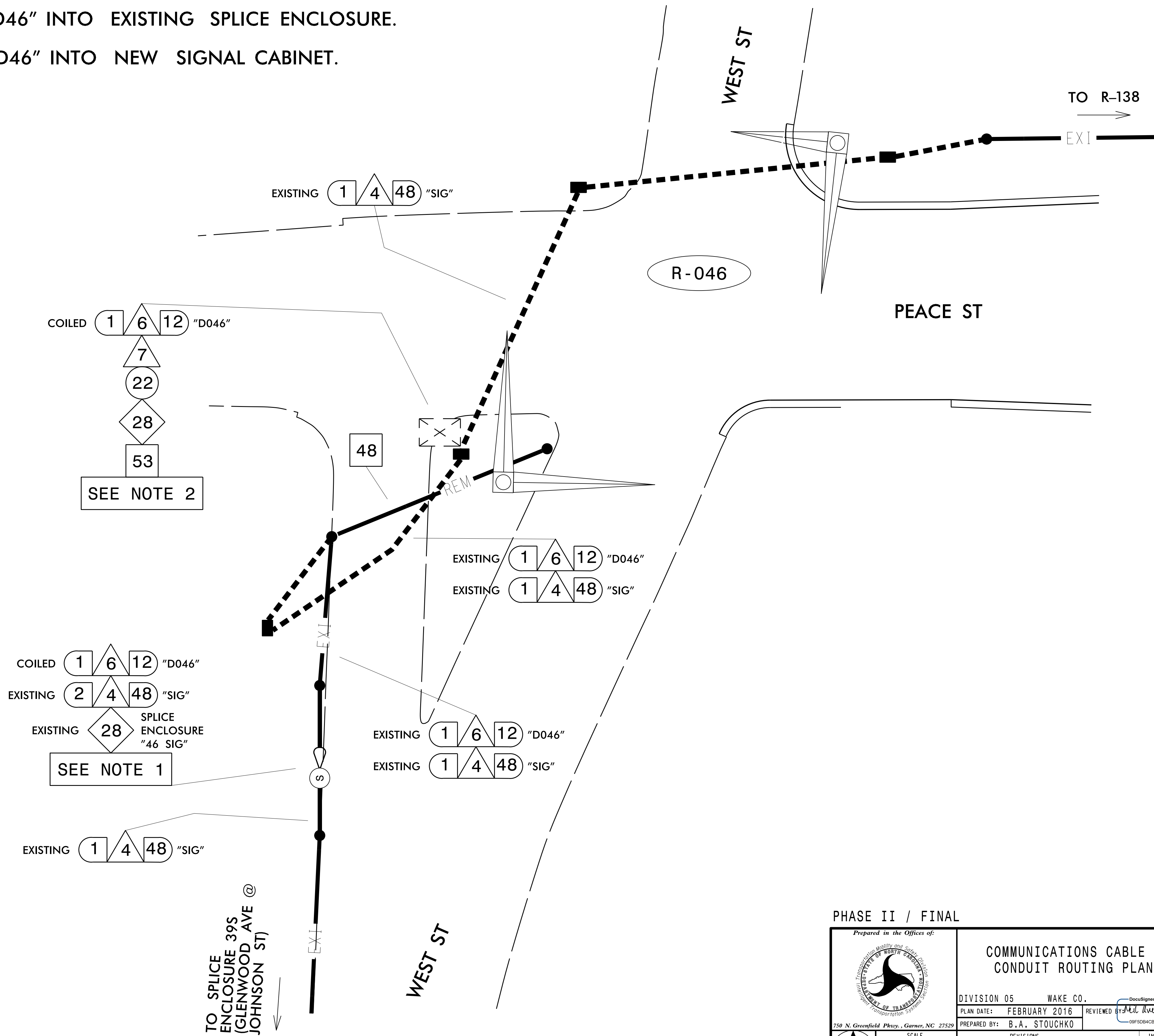


NOTES:

1. SPLICE COILED CABLE "D46" INTO EXISTING SPLICE ENCLOSURE.
2. SPLICE COILED CABLE "D46" INTO NEW SIGNAL CABINET.



TO SPLICE ENCLOSURE 39S (GLENWOOD AVE @ JOHNSON ST) ↓

PHASE II / FINAL

DOCUMENT NOT CONSIDERED FINAL UNLESS ALL SIGNATURES COMPLETED

	<p>COMMUNICATIONS CABLE AND CONDUIT ROUTING PLANS</p>		
	<p>DIVISION 05 WAKE CO.</p> <p>PLAN DATE: FEBRUARY 2016</p> <p>PREPARED BY: B.A. STOUCHKO</p>	<p>DocuSigned by: RALEIGH</p> <p>REVIEWED BY: <i>Gregory A. Fuller</i></p> <p>DATE: 2/9/2016</p>	