

STATE OF NORTH CAROLINA
 DEPT. OF TRANSPORTATION
 DIVISION OF HIGHWAYS
 RALEIGH, N.C.

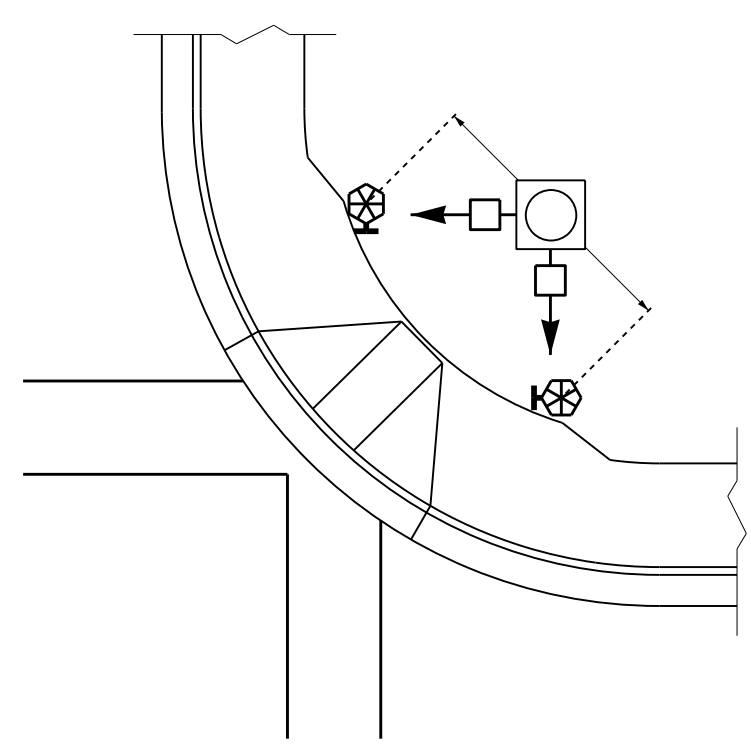
06-14

ENGLISH DETAIL DRAWING FOR
PEDESTRIAN PUSHBUTTON LOCATIONS
 PLACEMENT DETAIL

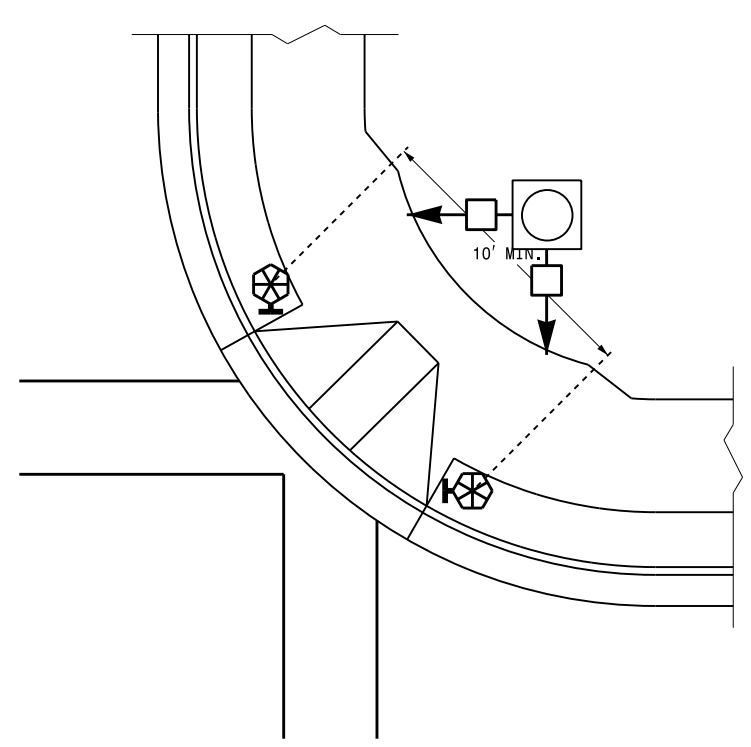
SHEET 3 OF 3
1705D01

TYPICAL PUSHBUTTON LOCATIONS (CASE III)

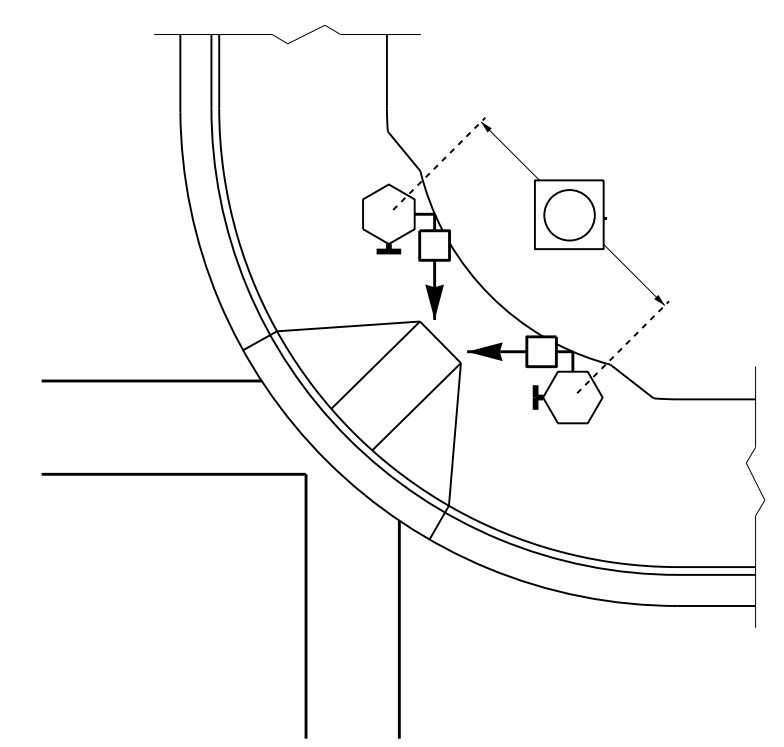
SHARED CURB RAMPS



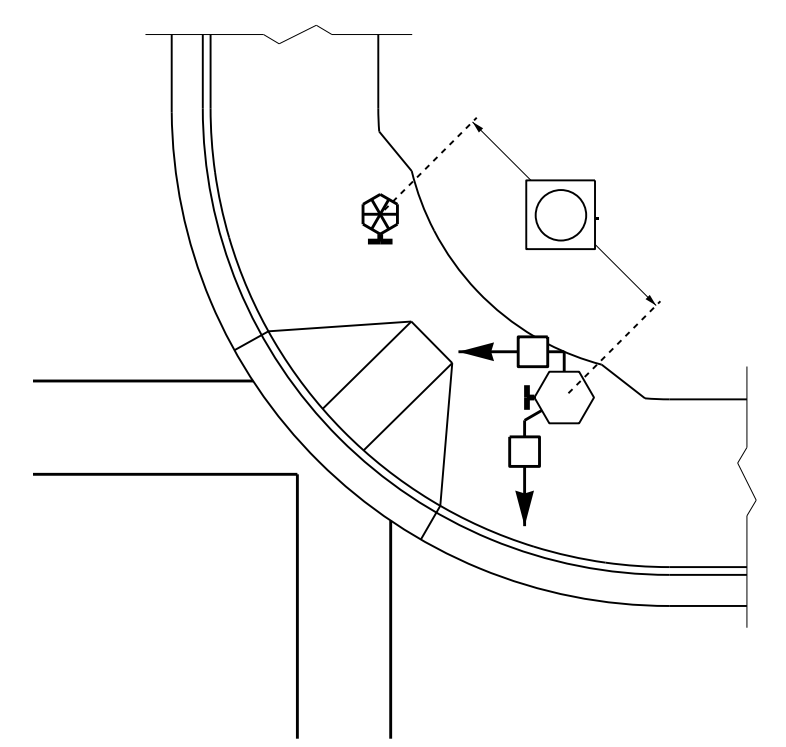
BACK OF SIDEWALK IS WITHIN 10' OF CURB OR PAVEMENT/SHOULDER



GRASS STRIP PLACEMENT IF BACK OF SIDEWALK EXCEEDS 10' FROM CURB OR PAVEMENT/SHOULDER

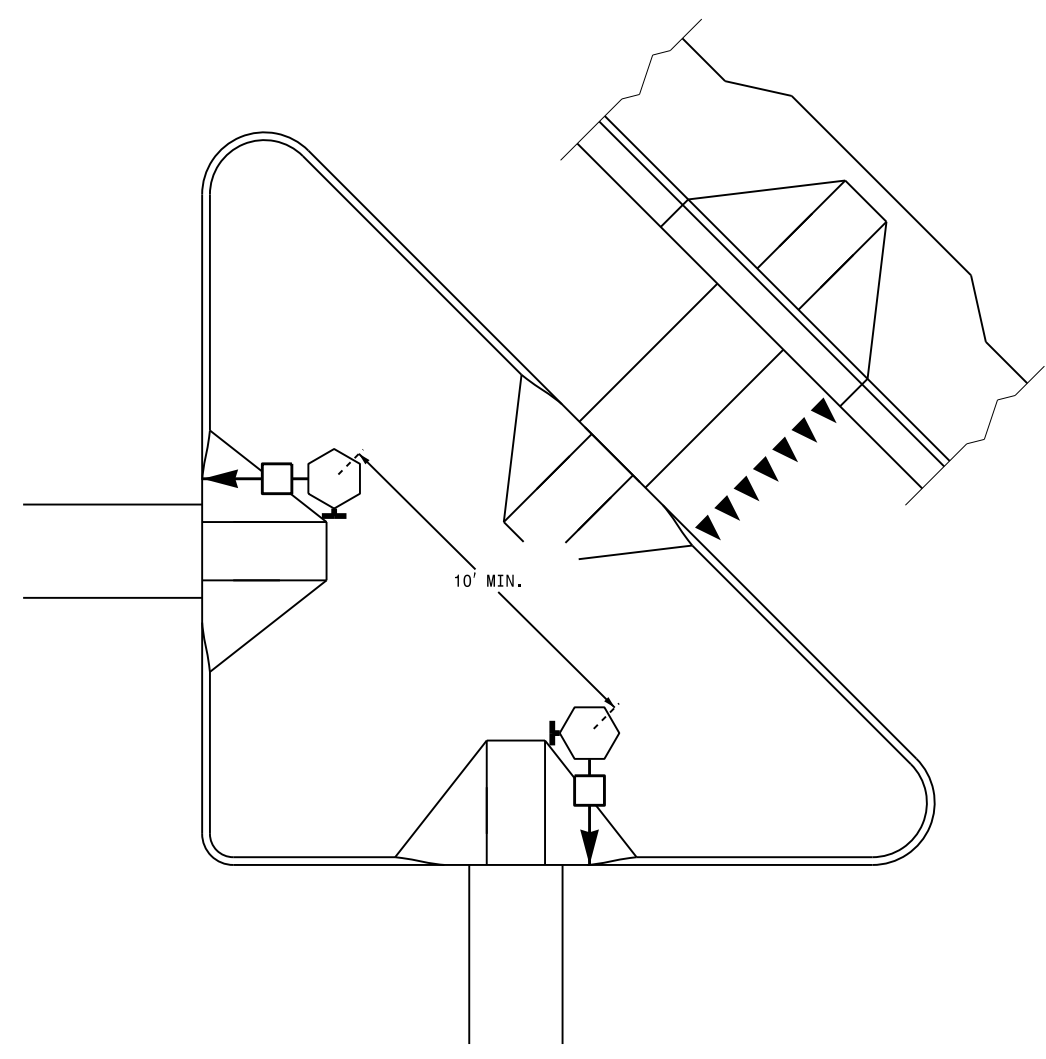


PUSHBUTTON PLACEMENT IN WIDE SIDEWALK (CORRESPONDING PUSHBUTTONS AND SIGNAL HEADS ON DIFFERENT PEDESTALS)

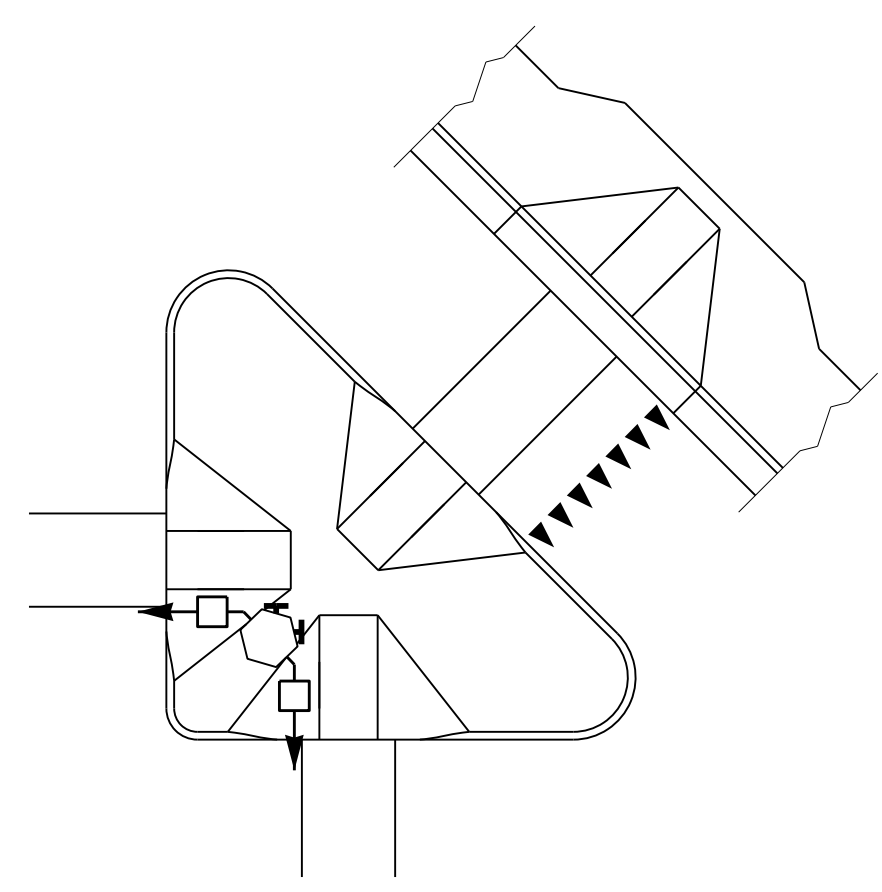


PUSHBUTTON PLACEMENT WITH SHARED TYPE II SIGNAL PEDESTAL AND TYPE I PUSHBUTTON POST

TRAFFIC ISLAND PUSHBUTTON LOCATIONS



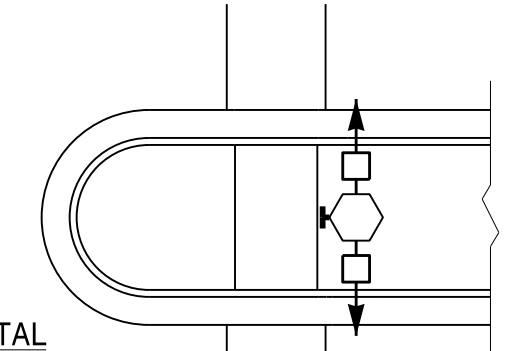
PUSHBUTTON PLACEMENT IN LARGE "PORK CHOP ISLAND" WITH SEPARATE PEDESTALS



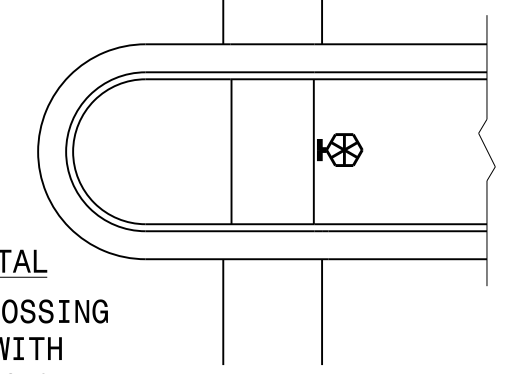
PUSHBUTTON PLACEMENT IN SMALL "PORK CHOP ISLAND" WITH SHARED PEDESTAL

PUSHBUTTON PLACEMENT IN MEDIAN

TYPE II PEDESTAL (FOR STAGED OR MULTI-PHASE CROSSING)



TYPE I PEDESTAL (FOR COMPLETE CROSSING CURB TO CURB WITH OPTIONAL REFUGE)



PROPOSED

	Signal Pole
	Type I Pushbutton Post
	Type II Signal Pedestal
	Pushbutton & Sign
	Pedestrian Signal Head
	Curb Ramp
	Pushbutton Location Area

LEGEND

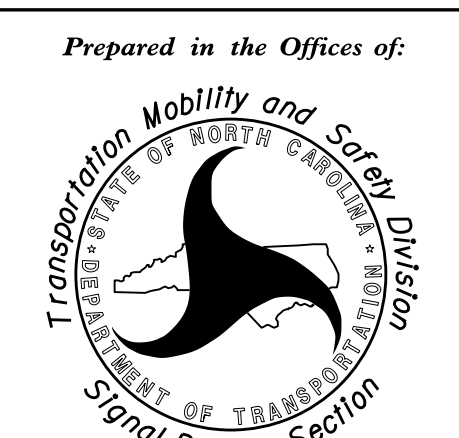
STATE OF NORTH CAROLINA
 DEPT. OF TRANSPORTATION
 DIVISION OF HIGHWAYS
 RALEIGH, N.C.

06-14

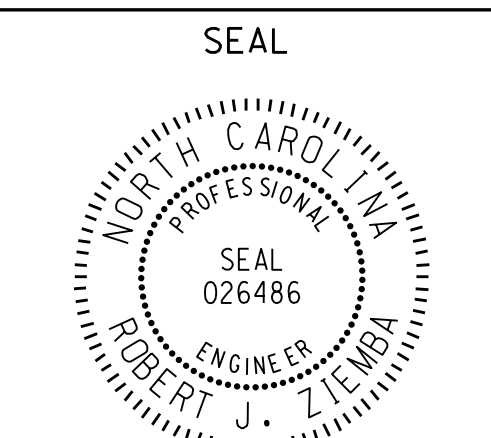
ENGLISH DETAIL DRAWING FOR
PEDESTRIAN PUSHBUTTON LOCATIONS
 PLACEMENT DETAIL

SHEET 3 OF 3
1705D01

See Plate for Title



750 N. Greenfield Parkway
 Garner, NC 27529



DocuSigned by:
 Signature
 6/17/2014
 DATE

06-AUG-2014 16:39
 S:\ITS\ASU\ITS_Signal\Signal Design Section\Central Region\Rob's Files\Red Stds\Pushbutton Drawings\Pushbutton Place Drawings\20140617.dgn
 rz1emba