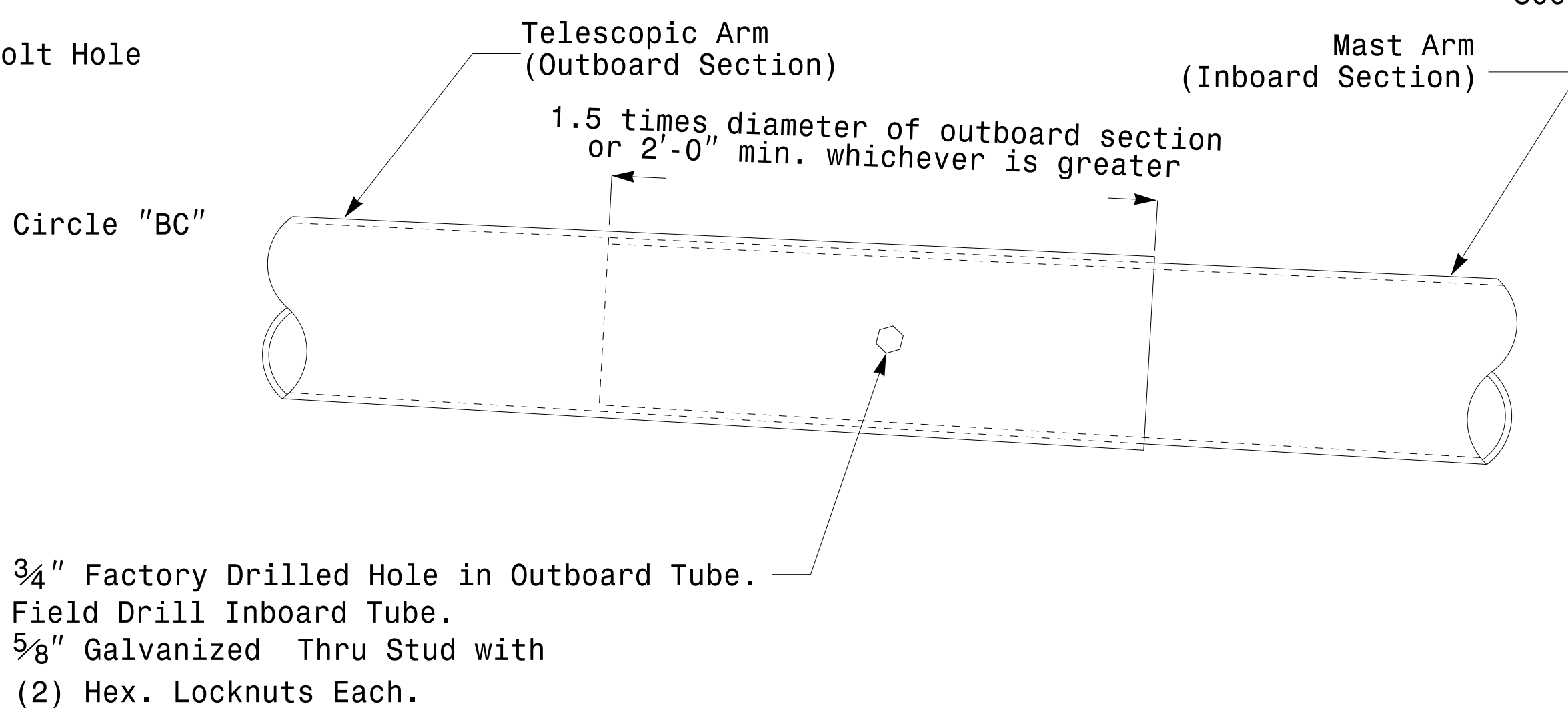
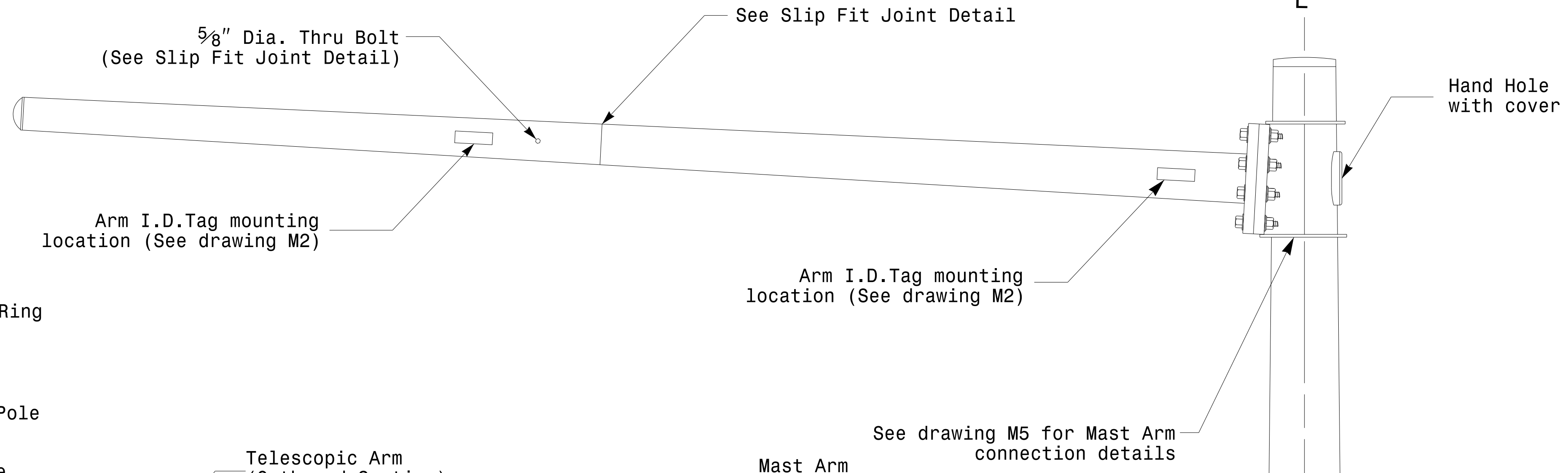
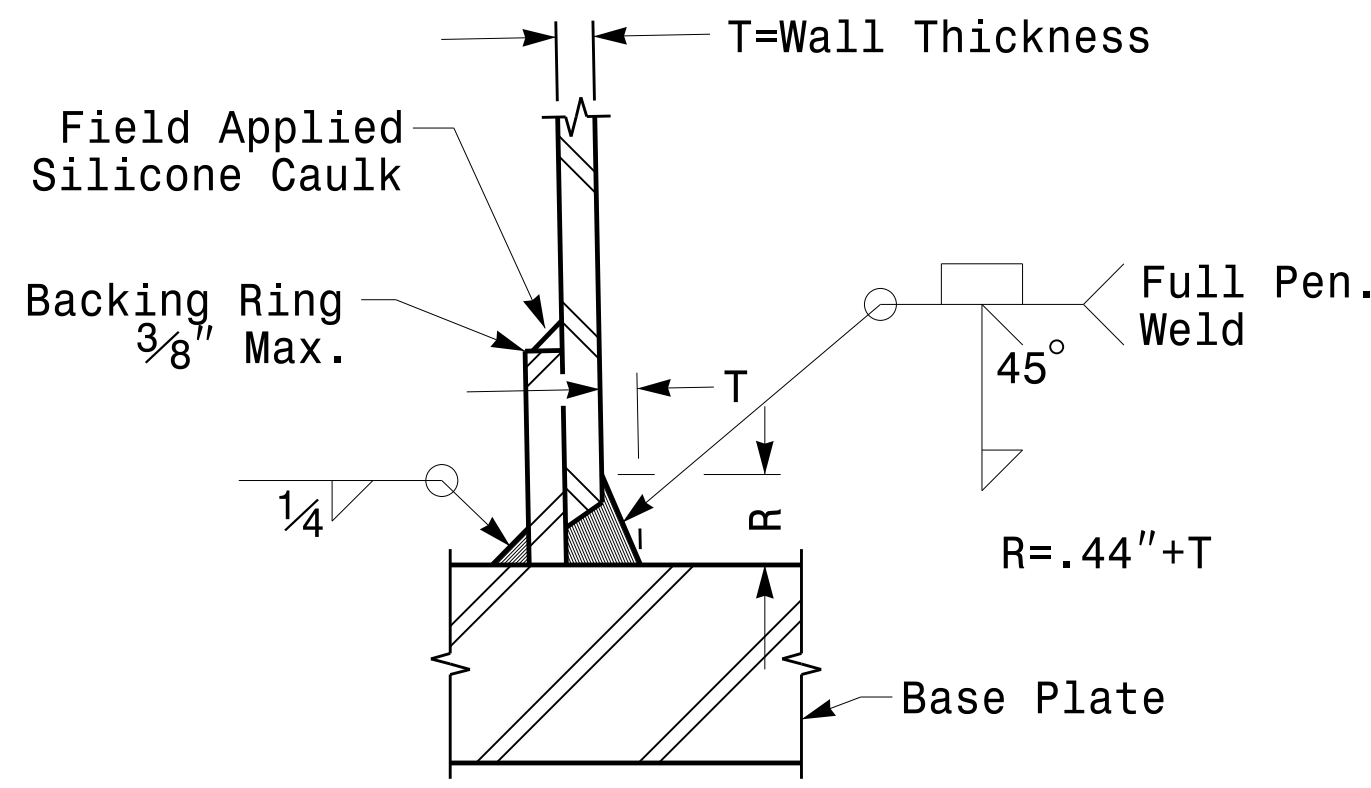


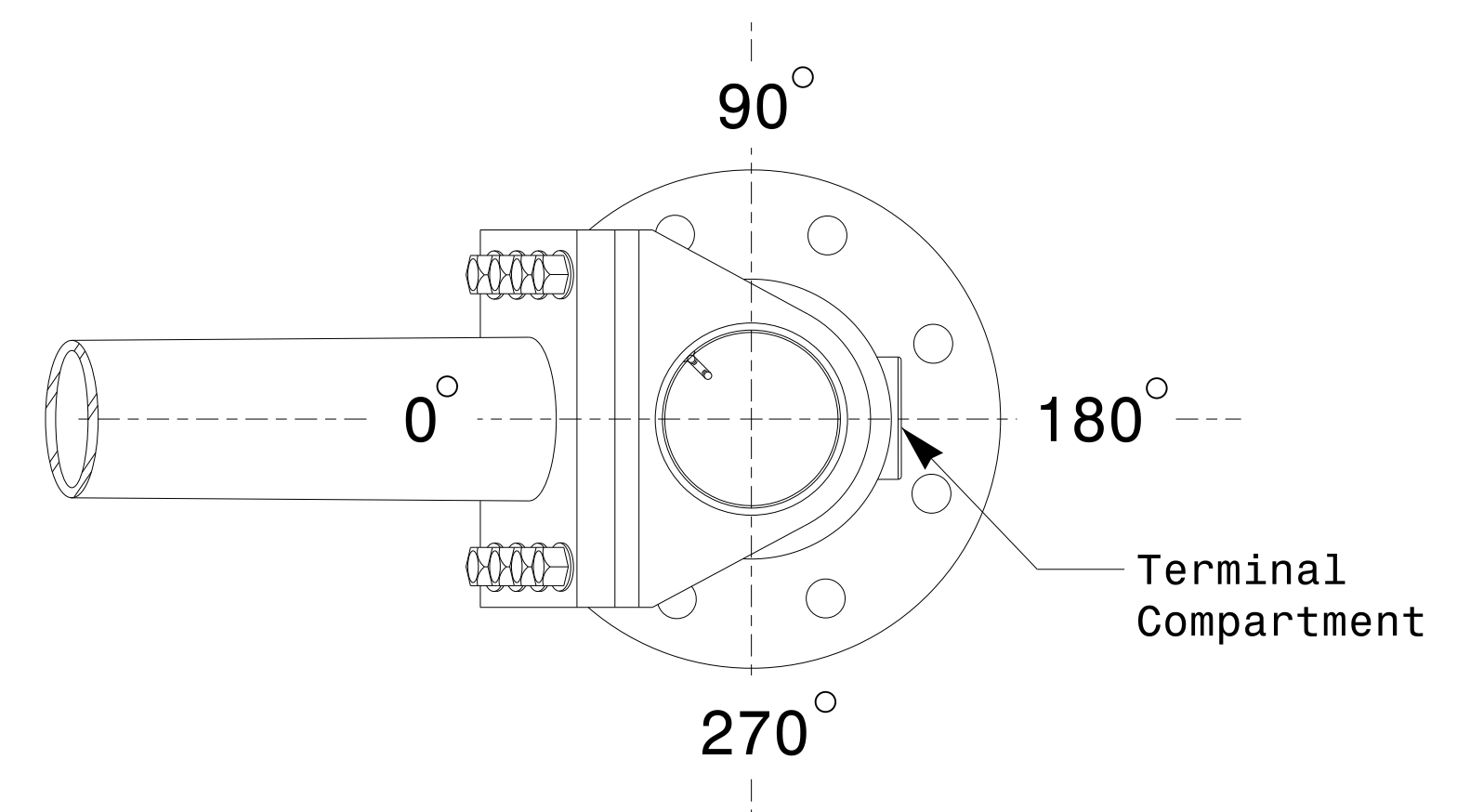
Section A-A
(See drawing M 2)
Pole Base Plate



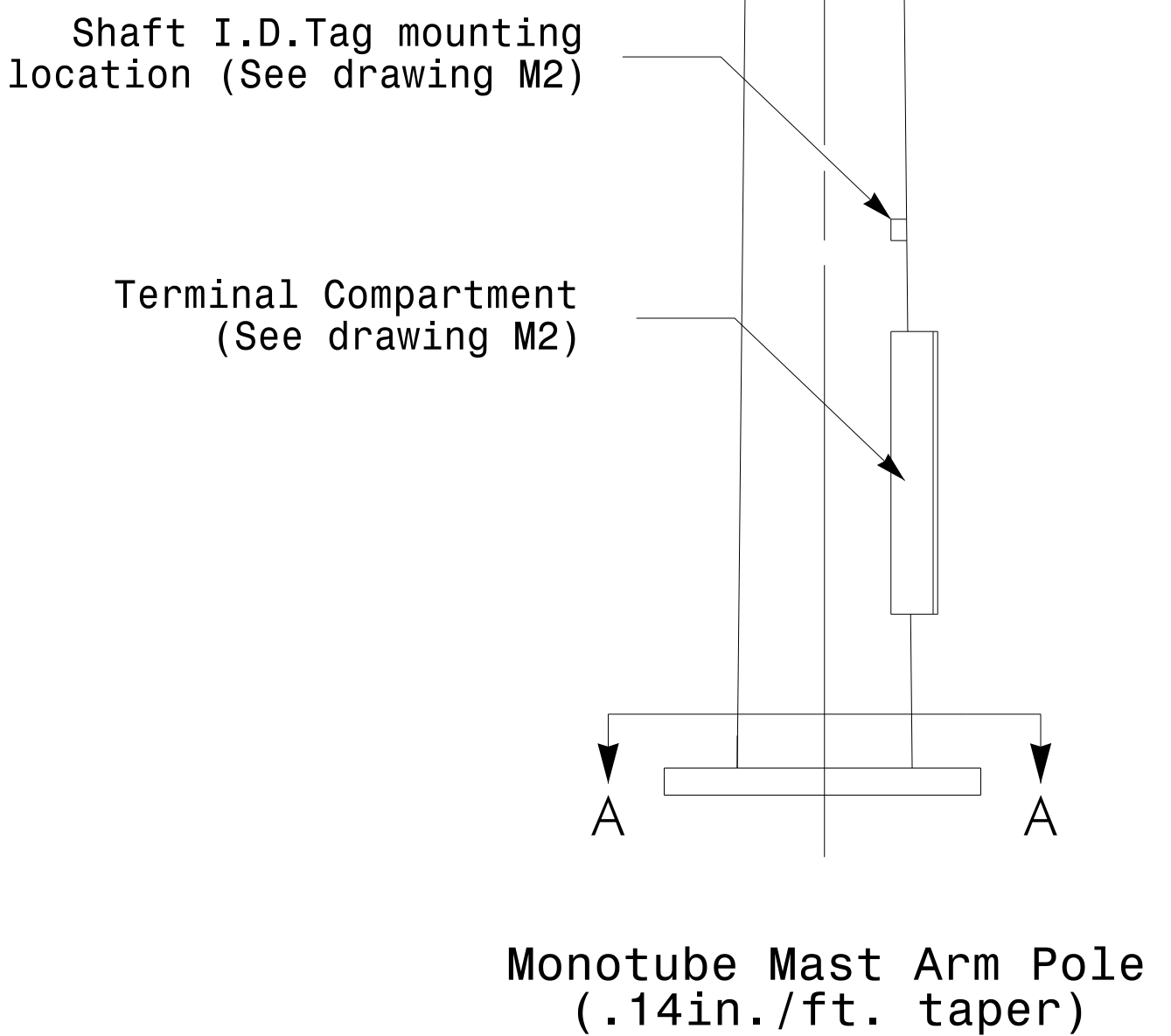
Slip Fit Joint Detail for Mast Arm



Section B-B
(Pole Attachment to Base Plate)
Full-Penetration Groove Weld Detail



Mast Arm Radial Orientation



	Typical Fabrication Details for Mast Arm Poles		
	PLAN DATE: AUGUST 2013 PREPARED BY: N. BITTING	DESIGNED BY: C.F. ANDREWS REVIEWED BY: D.C. SARKAR	
SCALE: 0 NA NONE	REVISIONS:	INIT. DATE:	SIG. INVENTORY NO.:

26-AUG-2014 08:50
 S:\IT\5317\15\SIGNAL\Signal Design\Section\Eastern Region\M4_Fab_Details\MastArms.dgn
 J:\JL\1002

Fabrication Details – Mast Arm Poles