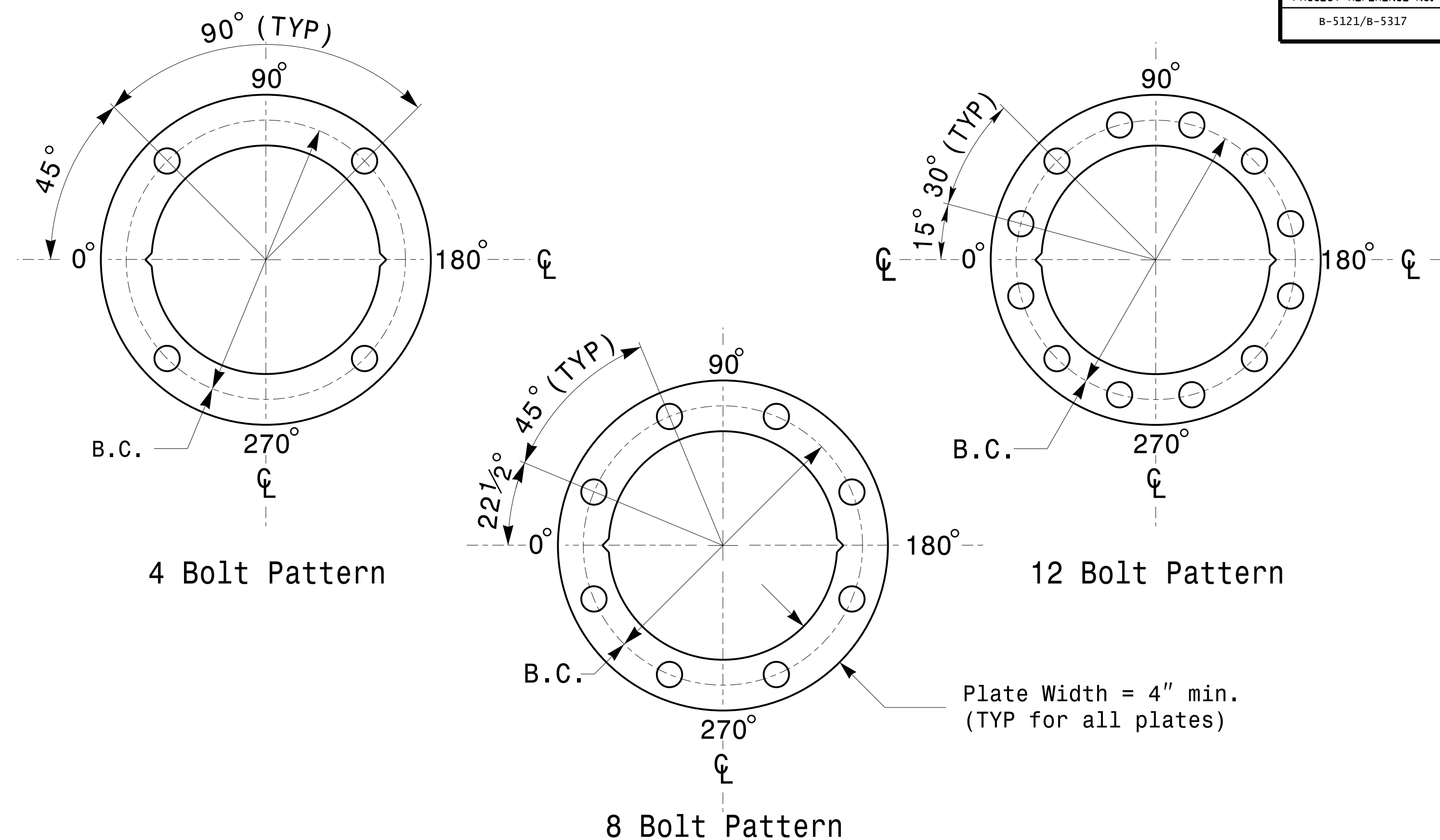


Terminal Compartment Detail



Base Plate Template and Anchor Bolt Lock Plate Details

| | |
|--------------------------|------------------------|
| MFG _____ | MFG. DATE: MM/YY _____ |
| SHAFT D/T/L/Y _____ | |
| ARM-A D/T/L/Y _____ | |
| ARM-B D/T/L/Y _____ | |
| A.B. DIA./B.C./L/Y _____ | |
| NCDOT STANDARD _____ | |

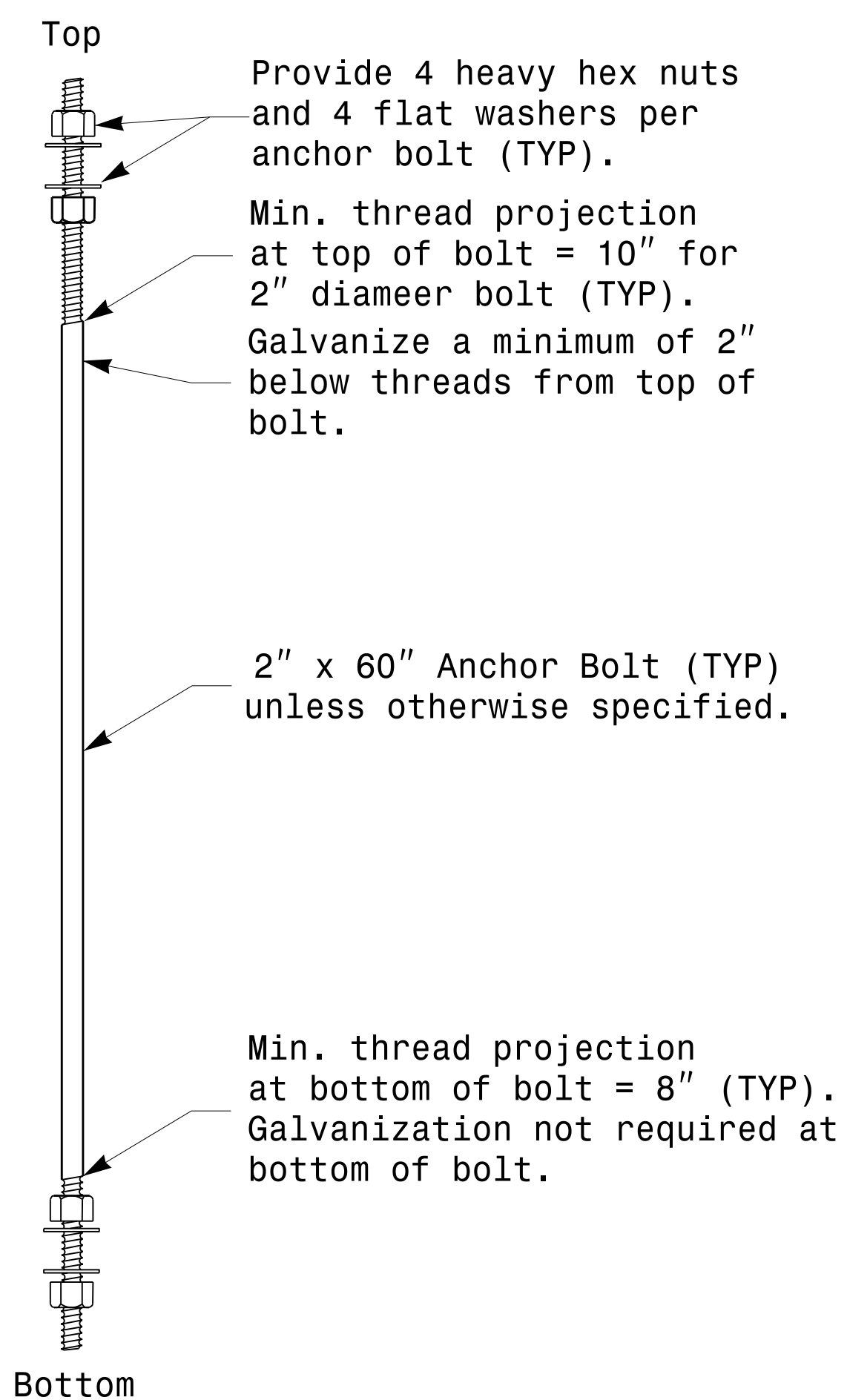
Shaft I.D. Tag
(Provide on Strain Poles and Mast Arm Poles)

| | |
|-----------------------|------------------------|
| MFG _____ | MFG. DATE: MM/YY _____ |
| SECTION D/T/L/Y _____ | |
| NCDOT STANDARD _____ | |

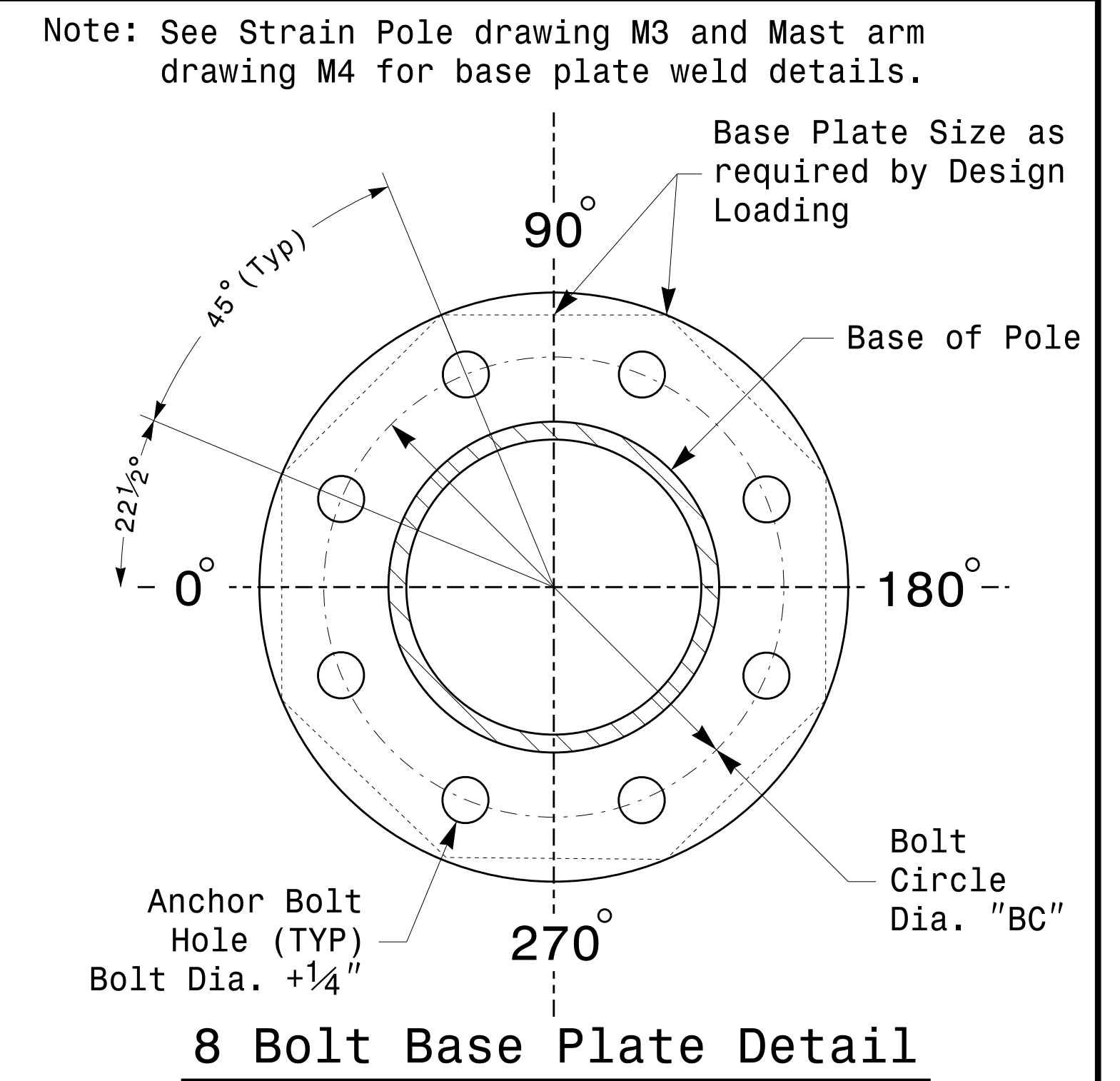
Arm I.D. Tag
(Provide on each section of a multi-section mast arm)

- Notes:
- 1) D= Diameter, T= Thickness, L= Length, Y= Yield Strength
 - 2) A.B. = Anchor Bolt
 - 3) B.C. = Bolt Circle of Anchor Bolts
 - 4) If Custom Design, use "NCDOT STANDARD" line for pole I.D. number and Signal Inv. Number.
 - 5) See drawing M4 for mounting positions of I.D. tags.

Identification Tag Details



Anchor Bolt Detail



| | | | |
|-------------|---|---|---|
| | Typical Fabrication Details Common To All Metal Poles | | |
| | PLAN DATE: AUGUST 2013 PREPARED BY: N. BITTING | DESIGNED BY: C.F. ANDREWS REVIEWED BY: D.C. SARKAR | |
| SCALE: NONE | REVISIONS: _____ | INIT. DATE: _____ | DocuSign by: Dinesh C. Sarkar 8/26/2014 DATE: _____ SIG. INVENTORY NO. _____ |

06-AUG-2014 08:55
 S:\IT\SS\115\Sig\Signal\Eastern Region\MM Sheets\2012_M2_Fab_Details All Poles.dgn
 Top of page

Fabrication Details – All Poles