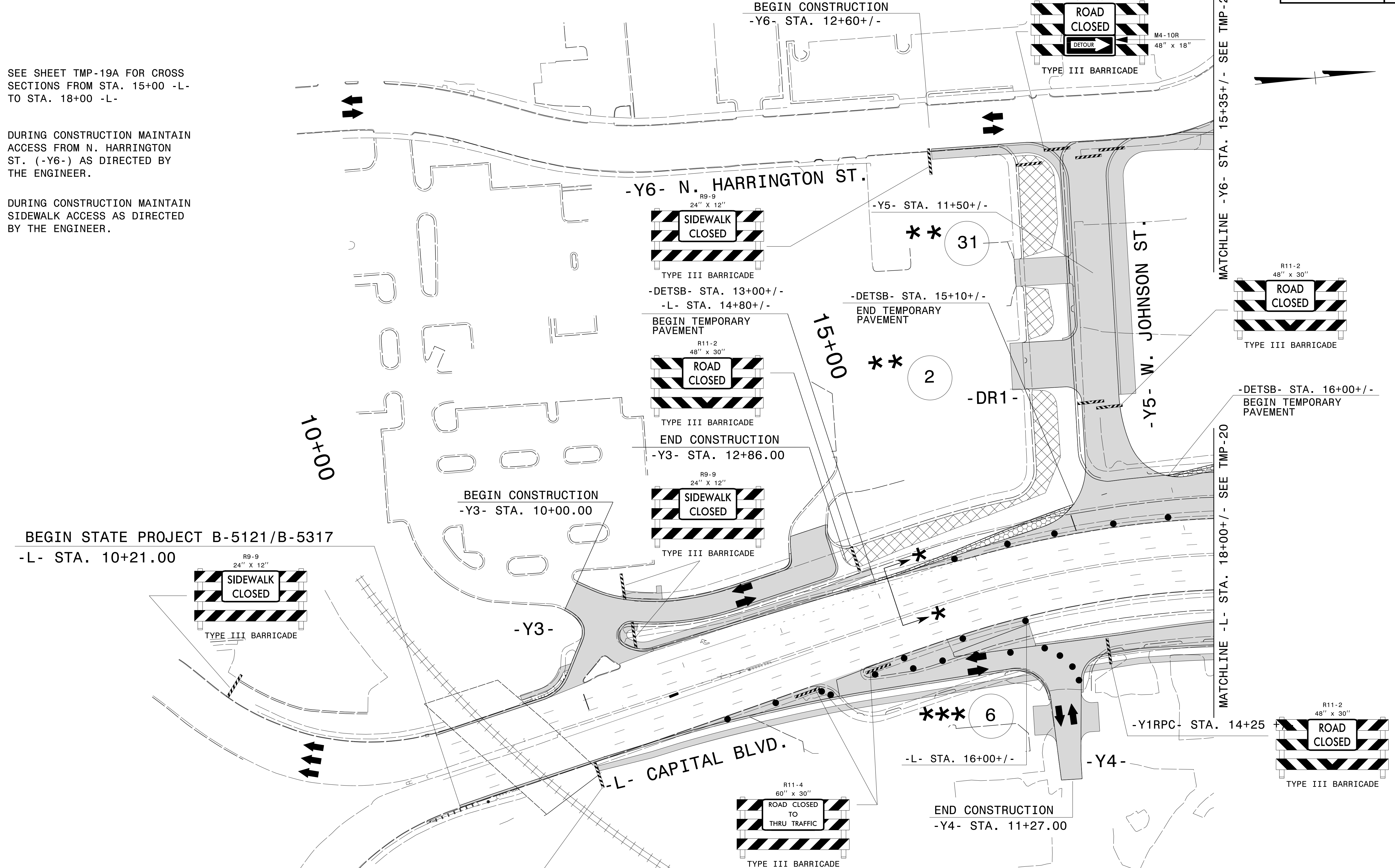


- * SEE SHEET TMP-19A FOR CROSS SECTIONS FROM STA. 15+00 -L- TO STA. 18+00 -L-
- ** DURING CONSTRUCTION MAINTAIN ACCESS FROM N. HARRINGTON ST. (-Y6-) AS DIRECTED BY THE ENGINEER.
- *** DURING CONSTRUCTION MAINTAIN SIDEWALK ACCESS AS DIRECTED BY THE ENGINEER.



NOTES: PAVEMENT MARKINGS ARE EXISTING UNLESS OTHERWISE NOTED.
 MAINTAIN ACCESS TO -Y4- BUSINESSES AT ALL TIMES DURING CONSTRUCTION
 IN A MANNER APPROVED BY THE ENGINEER.

**DOCUMENT NOT CONSIDERED FINAL
 UNLESS ALL SIGNATURES COMPLETED**

2/1/2016
 P:\2014\B-5121\B-5317\TrafficControl\Top\Current TMP Files\LANE'S CURRENT\Peace S\XB5121\B5317_TC_TMP_Peace_psh19.dgn
 User:skennedy

WETHERILL ENGINEERING

1223 Jones Franklin Rd.
 Raleigh, N.C. 27606
 License No. F-0377
 Bus: 919 851 8077
 Fax: 919 851 8107

TRANSPORTATION PLANNING/DESIGN - BRIDGE/STRUCTURE DESIGN
 CIVIL/SITE DESIGN - GIS/GPS - CONSTRUCTION OBSERVATION

APPROVED: _____ DATE: _____

SEAL

**AREA II - PHASE I
 TEMPORARY TRAFFIC
 CONTROL DETAIL**