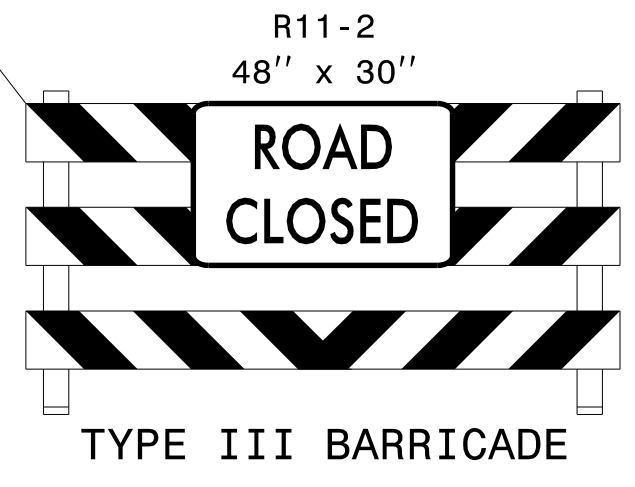
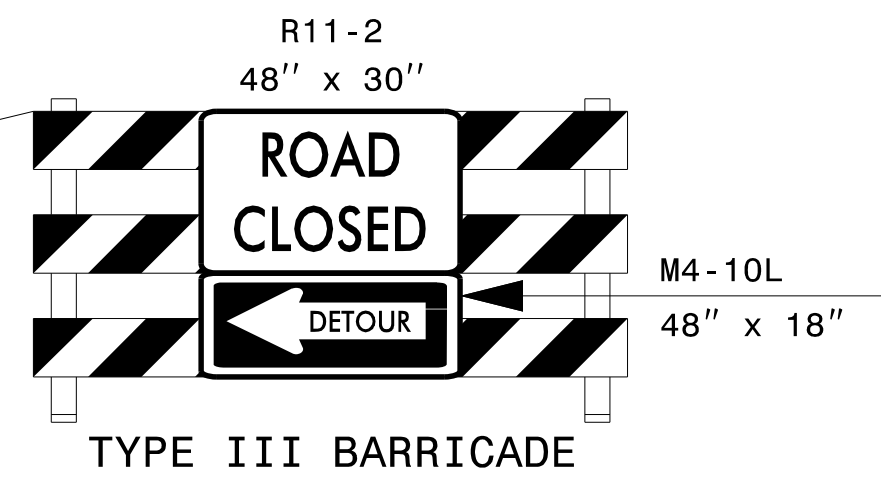
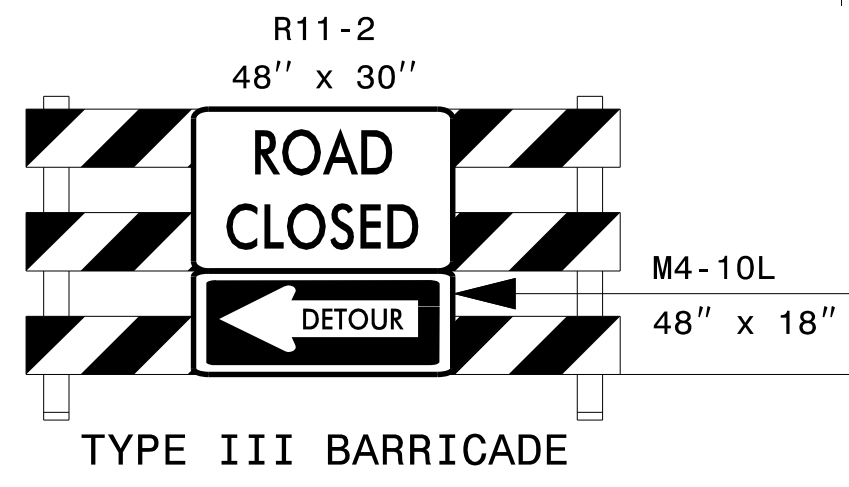
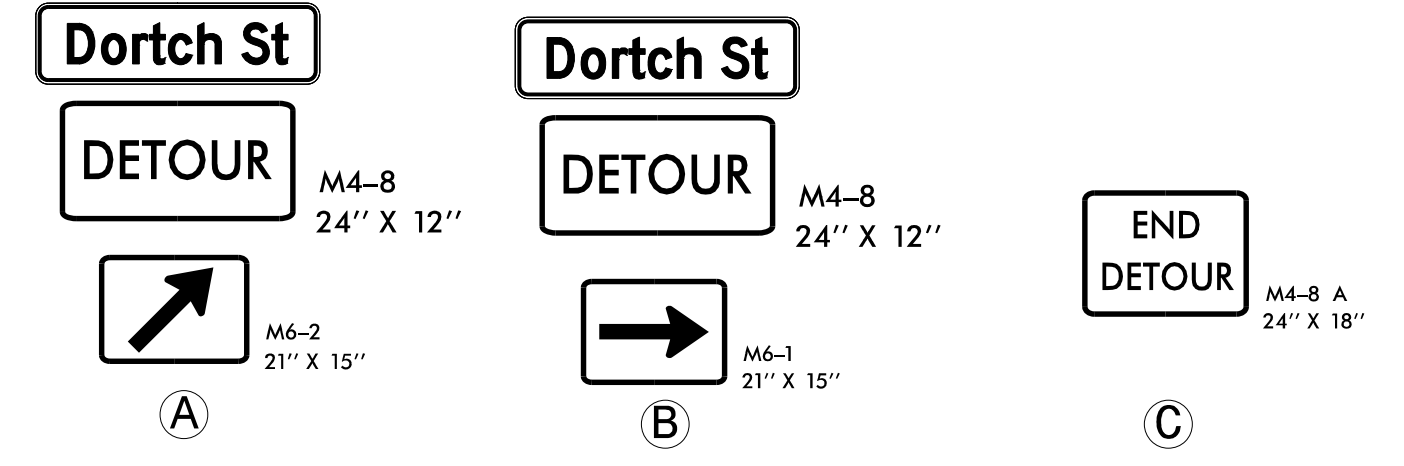
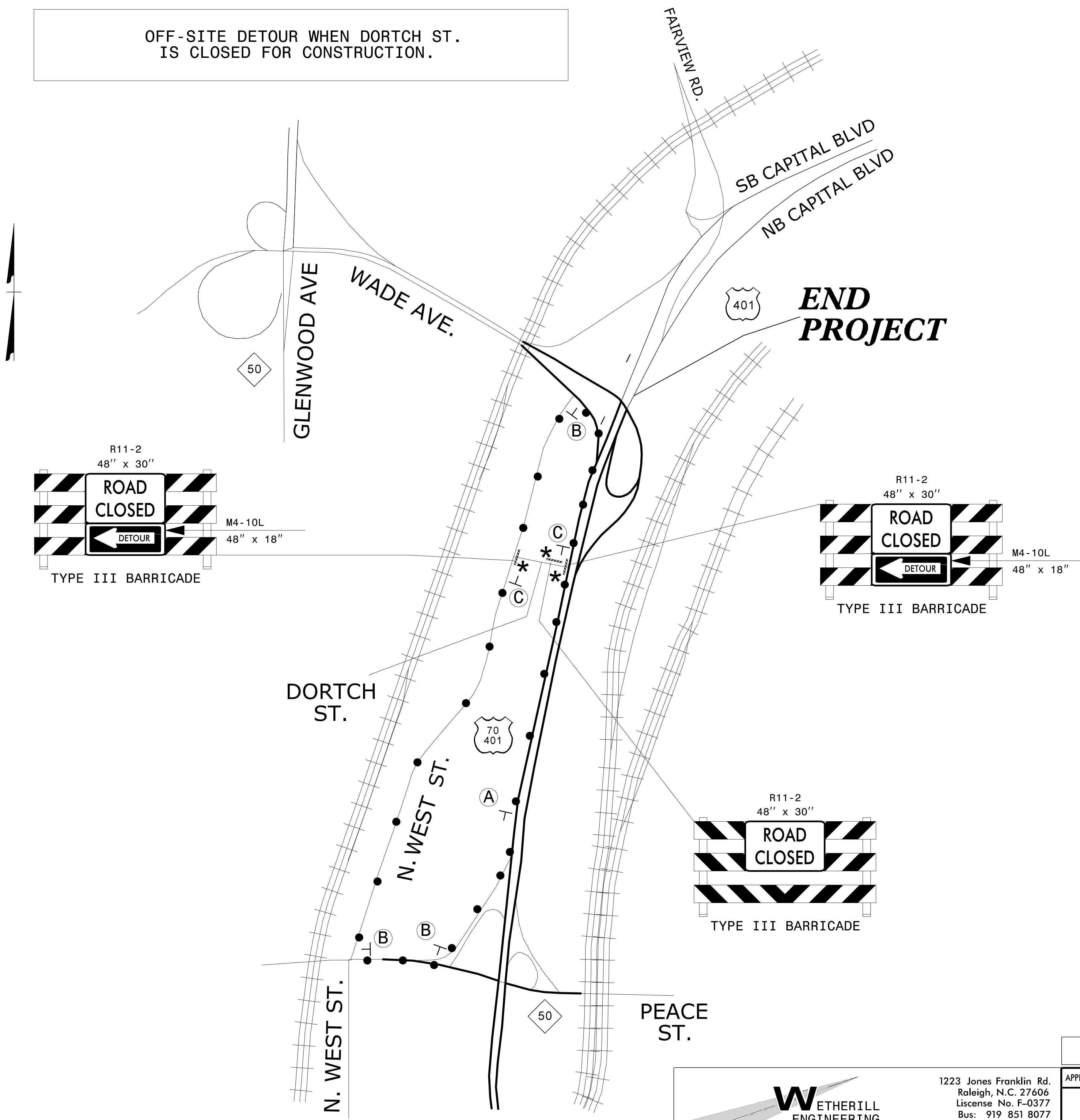


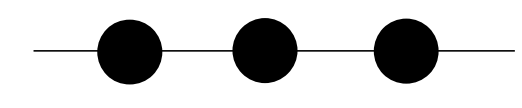
OFF-SITE DETOUR WHEN DORTCH ST. IS CLOSED FOR CONSTRUCTION.

DETOUR SIGNING



* SEE RSD 1101.03, SHEET 2 OF 9, FOR TYPE III BARRICADE LOCATIONS WITH ATTACHED SIGNING & ADDITIONAL SIGNING FOR ROAD CLOSURE. USE DRUMS AND TYPE III BARRICADE TO CLOSE DRIVEWAY ACCESS FROM PARCEL NO. 24 TO DORTCH ST.

DETOUR ROUTE



**DOCUMENT NOT CONSIDERED FINAL
UNLESS ALL SIGNATURES COMPLETED**

WETHERILL ENGINEERING

1223 Jones Franklin Rd.
Raleigh, N.C. 27606
License No. F-0377
Bus: 919 851 8077
Fax: 919 851 8107

TRANSPORTATION PLANNING/DESIGN - BRIDGE/STRUCTURE DESIGN
CIVIL/SITE DESIGN - GIS/GPS - CONSTRUCTION OBSERVATION

APPROVED: _____ DATE: _____

SEAL

TEMPORARY TRAFFIC CONTROL DETAIL