

CONTRACTOR SHALL WORK IN A CONTINUOUS MANNER TO COMPLETE THE WORK IN AREA I, PHASE III, STEPS 1 THRU 6C IN 180 CONSECUTIVE DAYS (SEE INTERMEDIATE CONTRACT TIME AND SPECIAL PROVISIONS).

CONTRACTOR SHALL WORK IN A CONTINUOUS MANNER TO COMPLETE THE WORK IN AREA I, PHASE III, STEPS 1 THRU 3 IN 60 CONSECUTIVE DAYS (SEE INTERMEDIATE CONTRACT TIME AND SPECIAL PROVISIONS).

PHASE III

STEP 1: USING ROADWAY STANDARD DRAWING NO. 1101.03, SHEETS 1 & 2 OF 9 AND SHEET TMP-17E, CLOSE EXISTING OFF-RAMP FROM NORTHBOUND CAPITAL BLVD. (-L-) TO WADE AVE., EXISTING FLYOVER, EXISTING ON-LOOP (-Y2LPC-) FROM WADE AVE. TO NORTHBOUND CAPITAL BLVD. (-L-) AND CLOSE SIDEWALKS AS SHOWN ON SHEET TMP-12.

STEP 2: - USING ROADWAY STANDARD DRAWING NO. 1101.02, SHEETS 3, 8, 9 & 10 OF 15:

-- CONSTRUCT PROPOSED OFF-RAMP/-FLYOVER- TIE-IN (INCLUDING PROPOSED DRAINAGE, PROPOSED CURB & GUTTER AND PROPOSED SIDEWALKS) UP TO, BUT NOT INCLUDING THE FINAL LAYER OF SURFACE COURSE FROM STA. 10+00 +/- -FLYOVER- (STA. 41+50 +/- -L-) TO STA. 15+20 +/- -FLYOVER- (SEE ROADWAY PLANS AND SHEET TMP-12).

-- CONSTRUCT PROPOSED -FLYOVER- TIE-IN (INCLUDING PROPOSED DRAINAGE, PROPOSED CURB & GUTTER AND PROPOSED SIDEWALKS) UP TO, BUT NOT INCLUDING THE FINAL LAYER OF SURFACE COURSE FROM STA. 22+90 +/- -FLYOVER- TO STA. 25+76 +/- -FLYOVER- (SEE ROADWAY PLANS AND SHEET TMP-12).

NOTE: MAINTAIN ACCESS TO TEMPORARY CROSSOVER UNTIL NO LONGER REQUIRED.

-- BEGIN CONSTRUCTION OF PROPOSED ON-LOOP (-Y2LPC-) (INCLUDING PROPOSED DRAINAGE, PROPOSED CURB & GUTTER AND PROPOSED SIDEWALKS) UP TO, BUT NOT INCLUDING THE FINAL LAYER OF SURFACE COURSE FROM STA. STA. 10+70 +/- -Y2LPC- TO STA. 15+20 +/- -FLYOVER- (SEE ROADWAY PLANS AND SHEET TMP-12).

-- BEGIN REMOVAL OF EXISTING WADE AVE./FLYOVER & BRIDGE [EXISTING SPANS OVER CAPITAL BLVD. (-L-), END BENT EAST SIDE AND EXISTING CENTER BENT] (SEE ROADWAY PLANS, STRUCTURE PLANS AND SHEET TMP-12).

NOTE: FOR EXISTING BRIDGE REMOVAL UTILIZE OFF-SITE DETOURS ON SHEET TMP-17A TO CLOSE SOUTHBOUND CAPITAL BLVD. (-L-), AND SHEET TMP-17G TO CLOSE NORTHBOUND CAPITAL BLVD. (-L-) AND GENERAL NOTE "C" ON TMP-1B FOR TIME RESTRICTIONS.

-- PLACE TEMPORARY PAVEMENT MARKINGS/MARKERS, REMOVE & RESET PORTABLE CONCRETE BARRIER ON SOUTHBOUND CAPITAL BLVD. (-L-) AND SHIFT TRAFFIC AS SHOWN ON SHEET TMP-12. IN ADDITION INSTALL ADDITIONAL PORTABLE CONCRETE BARRIER ON NORTHBOUND CAPITAL BLVD. (-L-) AS SHOWN ON SHEET TMP-12, AND BEGIN CONSTRUCTION OF PROPOSED MEDIAN OF CAPITAL BLVD. (-L-) FROM STA. 48+60 +/- -L- TO STA. 53+06 +/- -L- (SEE ROADWAY PLANS).

-- MAY BEGIN REMOVAL OF REMAINDER OF EXISTING WADE AVE./FLYOVER BRIDGE AND MAY BEGIN CONSTRUCTION OF THE REMAINDER OF PROPOSED GREENWAY (GI) (SEE ROADWAY PLANS, STRUCTURE PLANS AND SHEET TMP-12).

STEP 3: - USING ROADWAY STANDARD DRAWING NO. 1101.02, SHEETS 3, 8, 9 & 10 OF 15:

-- PLACE TEMPORARY PAVEMENT MARKINGS/MARKERS FOR THE FINAL TRAFFIC PATTERN ON NEWLY COMPLETED OFF-RAMP/-FLYOVER- TO WADE AVE. AND OPEN TO TRAFFIC (SEE FINAL PAVEMENT MARKING PLANS AND SHEET TMP-14).

NOTE: OFF-SITE DETOUR TO CLOSE EXISTING ON-LOOP (-Y2LPC-) SHALL REMAIN IN PLACE.

STEP 4: - USING ROADWAY STANDARD DRAWING NO. 1101.02, SHEETS 3, 8, 9 & 10 OF 15:

-- COMPLETE REMOVAL OF EXISTING WADE AVE./FLYOVER & BRIDGE [EXISTING SPANS OVER CAPITAL BLVD. (-L-) AND EXISTING CENTER BENT] BEGUN IN AREA I, PHASE III, STEP 2.

-- COMPLETE CONSTRUCTION OF PROPOSED MEDIAN OF CAPITAL BLVD. (-L-) FROM STA. 48+60 +/- -L- TO STA. 53+06 +/- -L- BEGUN IN AREA I, PHASE III, STEP 2.

CONTRACTOR MAY WORK AREA I, PHASE III, STEP 5A THROUGH STEP 6C AND STEP 7 SIMULTANEOUSLY, AS DIRECTED BY THE ENGINEER.

CONTRACTOR SHALL WORK IN A CONTINUOUS MANNER TO COMPLETE THE WORK OF AREA I, PHASE III, STEP 5A.

STEP 5. - USING ROADWAY STANDARD DRAWING NO. 1101.02, SHEETS 3, 8 & 10 OF 15:

A. REMOVE PORTABLE CONCRETE BARRIER ON NORTHBOUND CAPITAL BLVD. (-L-) AND PLACE TEMPORARY PAVEMENT MARKINGS/MARKERS FOR THE TEMPORARY TRAFFIC PATTERN ON NORTHBOUND CAPITAL BLVD. (-L-) AS SHOWN ON SHEETS TMP-13 & TMP-14 AND SHIFT TRAFFIC.

B. PLACE PORTABLE CONCRETE BARRIER ALONG THE OUTSIDE LANE OF NORTHBOUND CAPITAL BLVD. (-L-) AS SHOWN ON SHEET TMP-14.

STEP 6. - USING ROADWAY STANDARD DRAWING NO. 1101.02, SHEETS 3, 8 & 10 OF 15:

A. REMOVE/COMPLETE REMOVAL EXISTING INTERIOR BENT, EXISTING CONCRETE WALL, EXISTING MONOLITHIC CONCRETE ISLAND WITH CONCRETE WALL AND EXISTING END BENT EAST SIDE (SEE ROADWAY PLANS AND STRUCTURE PLANS).

B. COMPLETE CONSTRUCTION OF PROPOSED ON-LOOP (-Y2LPC-) FROM STA. 10+70 +/- -Y2LPC- TO STA. 15+20 +/- -FLYOVER- BEGUN IN AREA I, PHASE III, STEP 2.

CONSTRUCT PROPOSED ON-LOOP (-Y2LPC-) & ACCELERATION LANE UP TO, BUT NOT INCLUDING THE FINAL LAYER OF SURFACE COURSE FROM STA. STA. 10+70 +/- -Y2LPC- TO STA. 53+06 +/- -L- (SEE ROADWAY PLANS AND SHEET TMP-14).

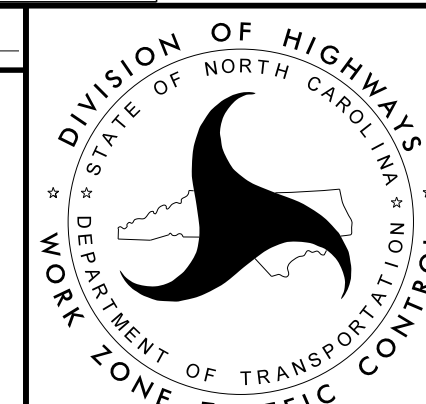
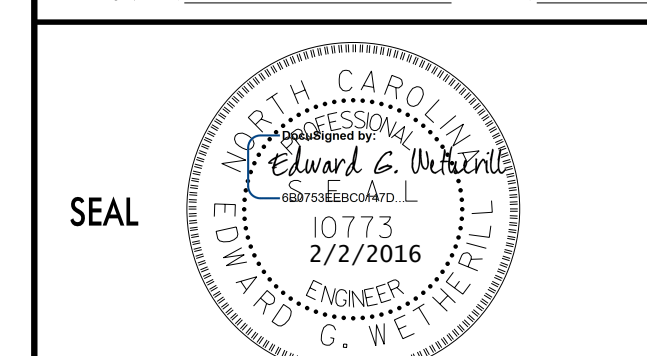
C. REMOVE PORTABLE CONCRETE BARRIER, PLACE TEMPORARY PAVEMENT MARKINGS/MARKERS FOR THE FINAL TRAFFIC PATTERN ON NEWLY COMPLETED ON-LOOP (-Y2LPC-) & ACCELERATION LANE AND OPEN TO TRAFFIC (SEE FINAL PAVEMENT MARKING PLANS AND SHEET TMP-16).

2/1/2016 P:\2014\B-5121-B-5317\TrafficControl\Top\Current TMP Files\LANE'S CURRENT\B5121LB5317_TC_TMP_Wade_psh4b.dgn User:skennedy



**DOCUMENT NOT CONSIDERED FINAL
UNLESS ALL SIGNATURES COMPLETED**

APPROVED: _____ DATE: _____



AREA I PHASING