

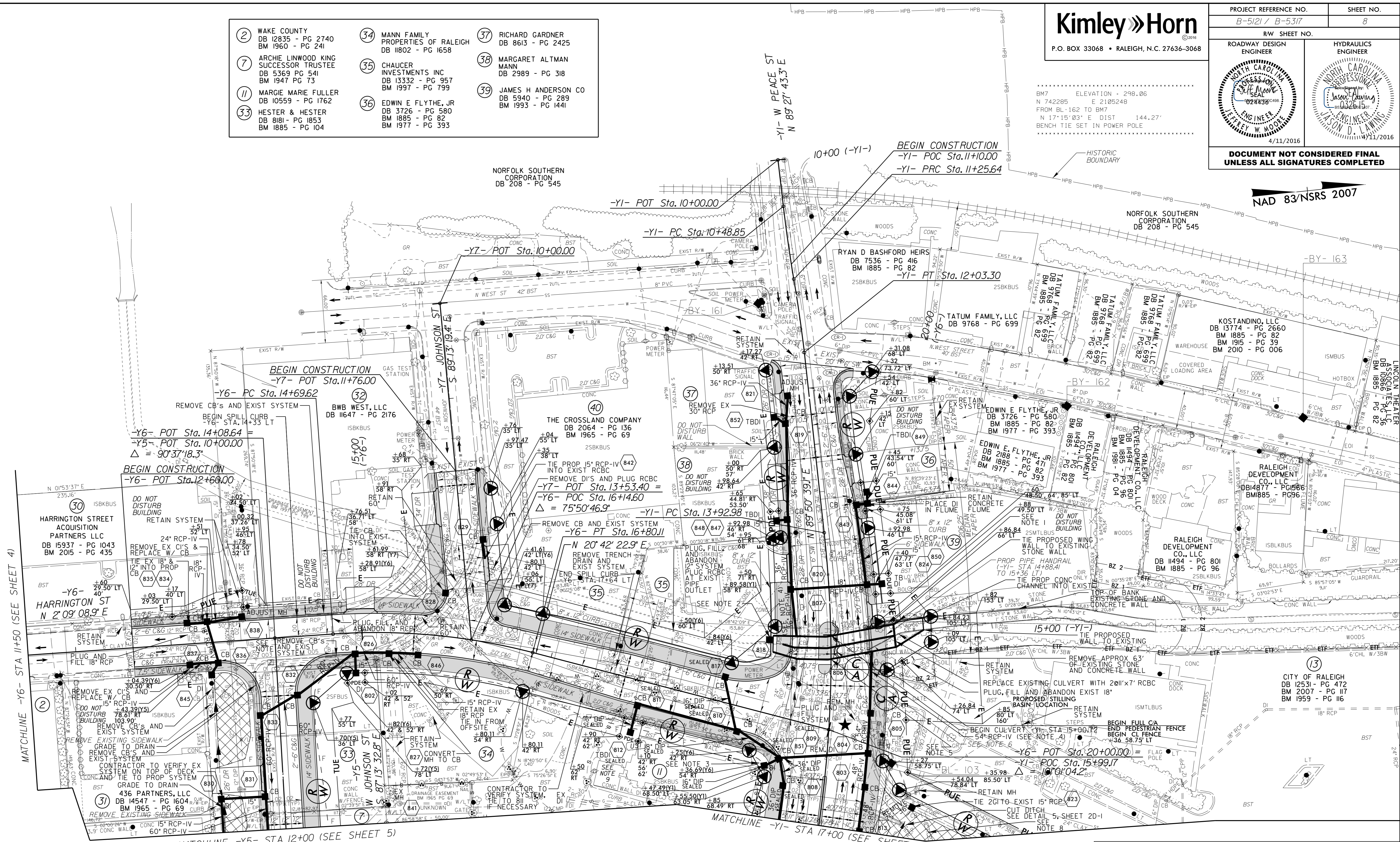
PROJECT REFERENCE NO. B-5121 / B-5317	SHEET NO. 8
RW SHEET NO.	
ROADWAY DESIGN ENGINEER	HYDRAULICS ENGINEER
4/11/2016	
DOCUMENT NOT CONSIDERED FINAL UNLESS ALL SIGNATURES COMPLETED	

- | | | |
|--|--|---|
| ② WAKE COUNTY
DB 12835 - PG 2740
DB 1960 - PG 241 | ③④ MANN FAMILY
PROPERTIES OF RALEIGH
DB 11802 - PG 1658 | ③⑦ RICHARD GARDNER
DB 8613 - PG 2425 |
| ⑦ ARCHE LINWOOD KING
SUCCESSOR TRUSTEE
DB 5369 PG 541
BM 1947 PG 73 | ③⑤ CHAUCER
INVESTMENTS INC
DB 13332 - PG 957
BM 1997 - PG 799 | ③⑧ MARGARET ALTMAN
MANN
DB 2989 - PG 318 |
| ⑪ MARGIE MARIE FULLER
DB 10559 - PG 1762 | ③⑥ EDWIN E FLYTHE, JR
DB 3726 - PG 580
BM 1885 - PG 82
BM 1977 - PG 393 | ③⑨ JAMES H ANDERSON CO
DB 5940 - PG 289
BM 1993 - PG 1441 |
| ③③ HESTER & HESTER
DB 8181 - PG 1853
BM 1885 - PG 104 | | |

NORFOLK SOUTHERN CORPORATION
DB 208 - PG 545

NORFOLK SOUTHERN CORPORATION
DB 208 - PG 545

NAD 83/NSRS 2007



REVISIONS

MATCHLINE -Y6- STA 11+50 (SEE SHEET 4)

MATCHLINE -Y5- STA 12+00 (SEE SHEET 5)

MATCHLINE -Y1- STA 17+00 (SEE SHEET 5)

- NOTES:
- REMOVE TOP OF EXISTING STONE WALL TO AN ELEVATION APPROXIMATELY 1' BELOW EXISTING PARKING LOT. REMOVE TOP OF WALL APPROXIMATELY 22' FROM EXISTING RCBC HEADWALL TO BEYOND THE 14" PROPOSED SIDEWALK AND CHAIN LINK FENCE. USE FLOWABLE FILL BETWEEN EXISTING STONE WALL AND OUTSIDE OF PROPOSED RCBC. EST 10 CY FLOWABLE FILL.
 - REMOVE EXIST DI AND INSTALL TB 26IN TOP OF RCBC
 - GRADE LOW AREA AROUND PROPOSED SIGNAL POLE TO DRAIN TO DROP INLET (85). CONTRACTOR TO ENSURE POSITIVE DRAINAGE AND KEEP ANY WATER FROM BEING TRAPPED ALONG -Y1- AND -Y6-.
 - OUTLET PIPE INTO SIDE OF CULVERT
 - END CULVERT -Y1- STA 15+25.76
 - TEMPORARY SHORING (TYP)(SEE TRANSPORTATION MANAGEMENT PLANS)
 - PLUG AND FILL EXIST 18" RCP
 - PLUG, FILL, AND ABANDON EXIST 48" RCP
 - DO NOT DISTURB BUILDING

- ★ TRAFFIC SIGNAL
- RADI DIMENSIONS ARE TO THE EDGE OF PAVEMENT UNLESS OTHERWISE NOTED
- ANY PIPE OR PORTION OF PIPES THAT ARE FILLED AND LATER FOUND TO BE IN CONFLICT SHALL BE REMOVED WITH NO ADDITIONAL COMPENSATION
- SEE SHEET 2B-1 FOR CURVE DATA
SEE SHEETS 2B-2 AND 2B-3 FOR INTERSECTION DETAILS
SEE SHEET 2C-6 FOR SPILL CURB DETAIL
SEE SHEET 11 FOR -Y1- PROFILE
SEE SHEET 14 FOR -Y5- PROFILE
SEE SHEET 15 FOR -Y6- AND -Y7- PROFILES
SEE SHEETS C-1 THRU C-10 FOR CULVERT PLANS