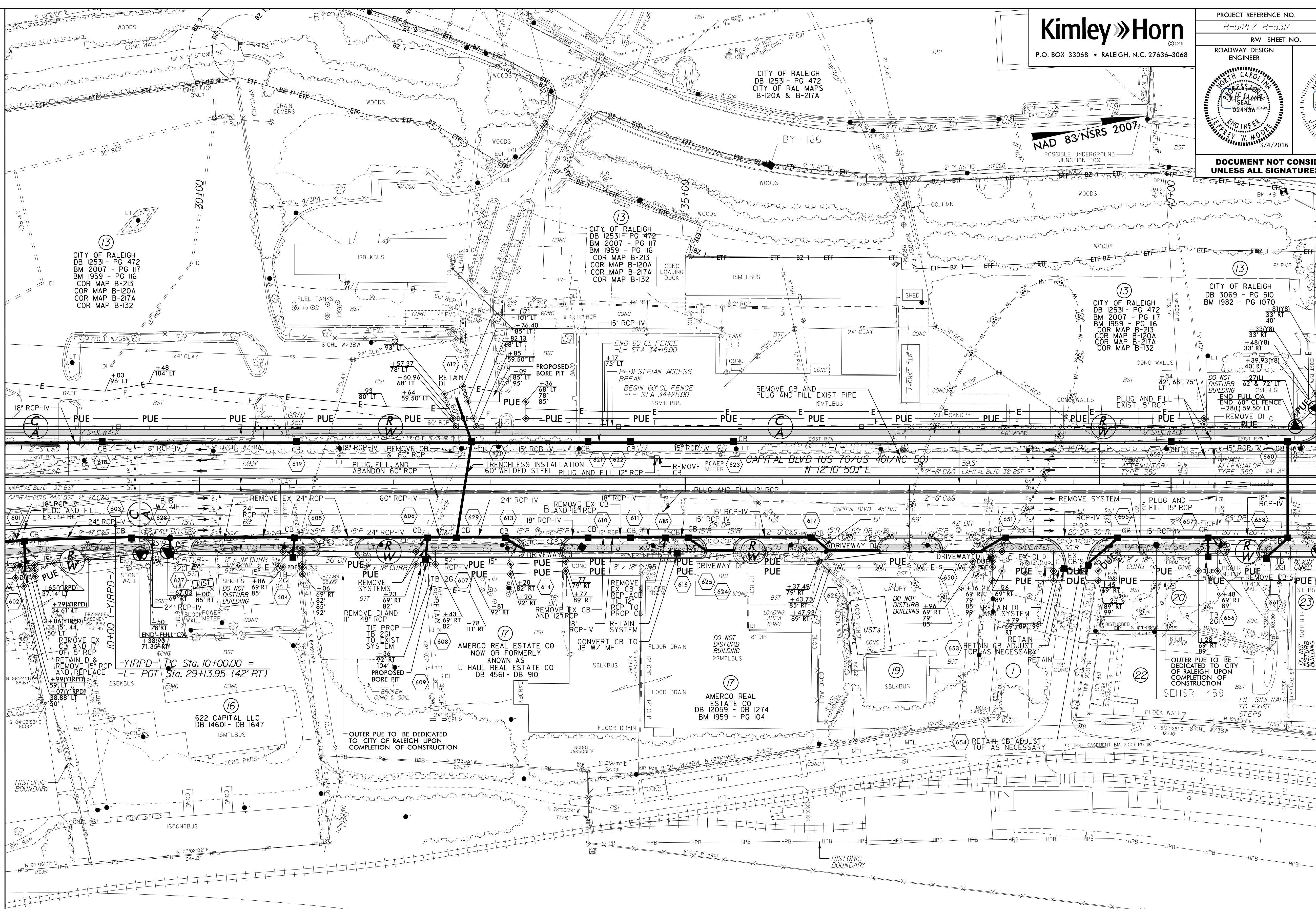


DOCUMENT NOT CONSIDERED FINAL UNLESS ALL SIGNATURES COMPLETED



REVISIONS

MATCHLINE -L- STA 28+00 (SEE SHEET 5)

MATCHLINE -L- STA 41+50 (SEE SHEET 7)

-YIRPD- PC Sta. 10+00.00 =
-L- POT Sta. 29+13.95 (42' RT)

CSX TRANSPORTATION
NO REFERENCE

- 1 STATE OF NORTH CAROLINA
DB 9868 - PG 518
BM 2003 - PG 116
- 20 NORTH CAROLINA
DEPARTMENT OF
TRANSPORTATION
DB 13987 - PG 2318
BM 1992 - PG 93
BM 1963 - PG 34
- 19 WILCOHESS LLC
DB 8964 - DB 1944
BM 1959 - PG 104
- 22 NORTH CAROLINA
DEPARTMENT OF
TRANSPORTATION
DB 13987 - PG 2318
BM 1992 - PG 93
BM 1963 - PG 34

RADI DIMENSIONS ARE TO THE EDGE OF PAVEMENT UNLESS OTHERWISE NOTED

ANY PIPE OR PORTION OF PIPES THAT ARE FILLED AND LATER FOUND TO BE IN CONFLICT SHALL BE REMOVED WITH NO ADDITIONAL COMPENSATION

SEE SHEET 2B-1 FOR CURVE DATA
SEE SHEET 2C-6 FOR SPILL CURB DETAIL
SEE SHEET 10 FOR -L- PROFILE
SEE SHEET 12 FOR -YIRPD- PROFILE

NOTE:
CONTRACTOR TO MAINTAIN ACCESS TO PARCELS 1, 20, AND 22 AT ALL TIMES DURING CONSTRUCTION