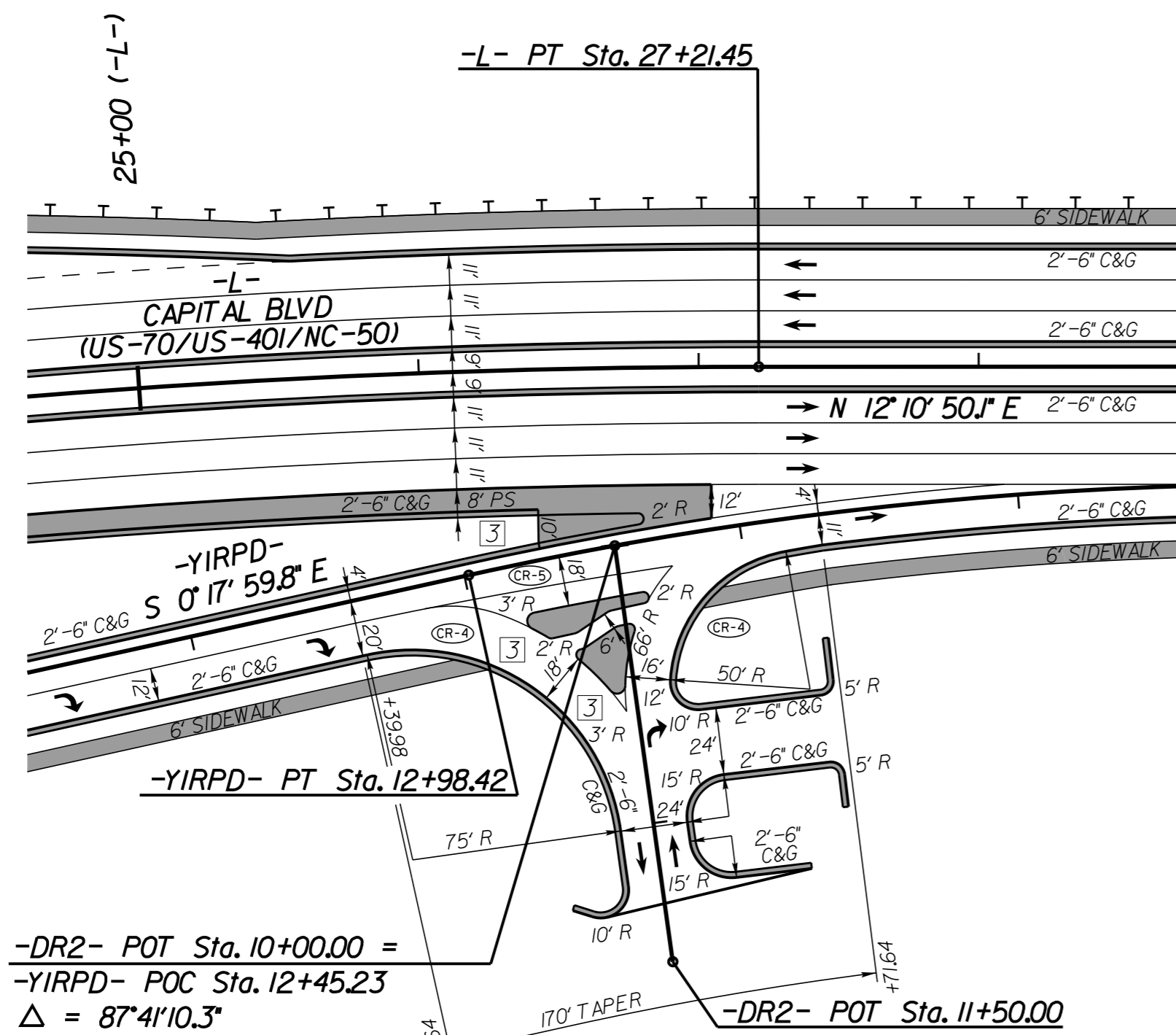


5/14/19

- NOTES:  
 1 TIE TO EXIST CURB AND GUTTER AT EXIST CONCRETE JOINT. TRANSITION 2'-6" C&G TO MATCH EXIST GUTTER WIDTH AS NECESSARY.  
 2 TIE TO EXIST CONCRETE SIDEWALK.  
 3 5' MONOLITHIC CONCRETE ISLAND (KEYED-IN)

NAD 83/NSRS 2007

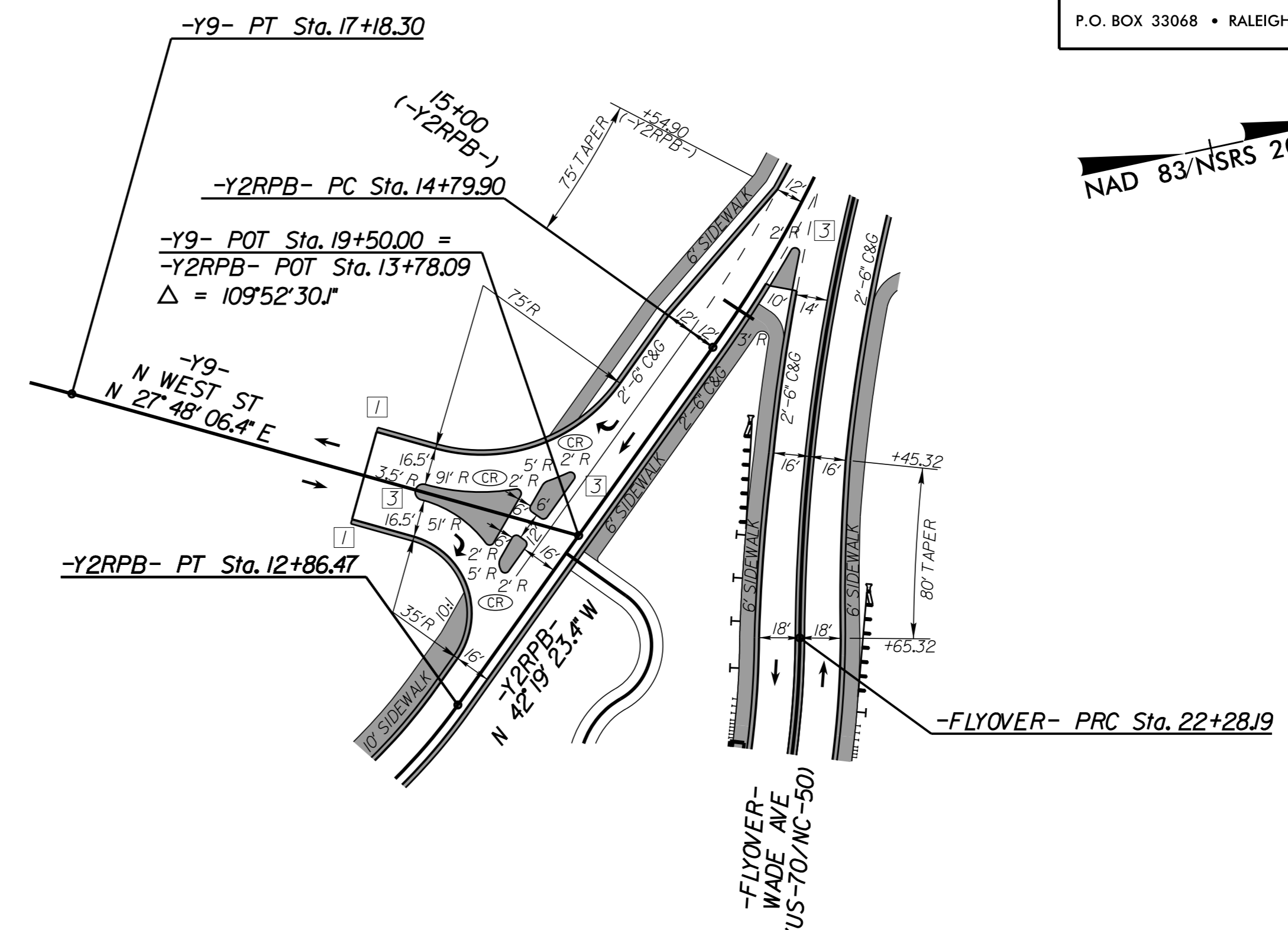


-L-/-DR2-  
 FOR CR-4 AND CR-5, SEE SHEET 2C-5  
 SEE SHEET NO.5 FOR PLAN

**Kimley Horn**  
 P.O. BOX 33068 • RALEIGH, N.C. 27636-3068

PROJECT REFERENCE NO. B-5121 / B-5317	SHEET NO. 2B-3
ROADWAY DESIGN ENGINEER	
DOCUMENT NOT CONSIDERED FINAL UNLESS ALL SIGNATURES COMPLETED	

NAD 83/NSRS 2007

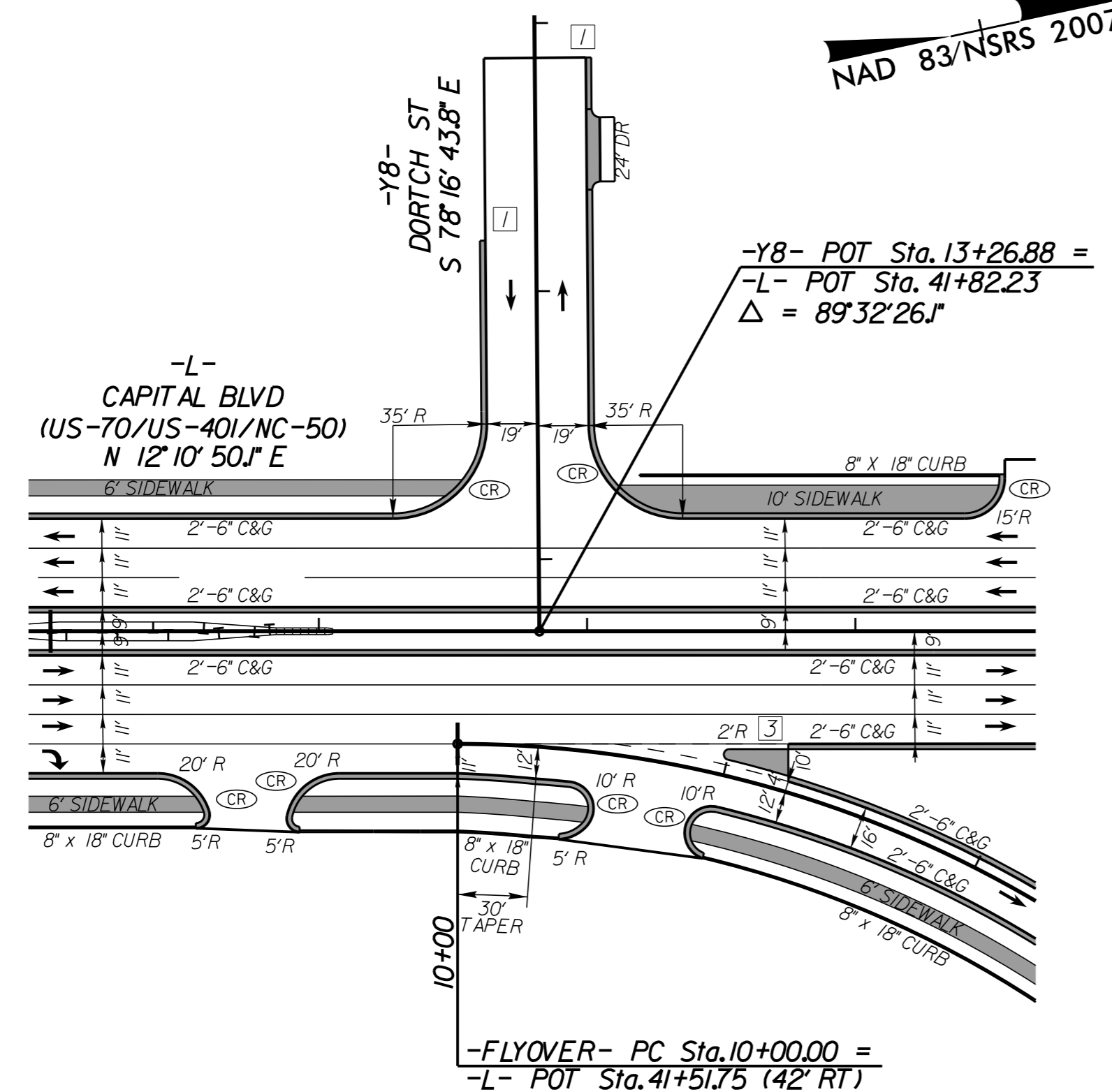


-Y2RPB-/-Y9-  
 SEE SHEET NO.7 FOR PLAN

58083 70416	6875 8375	6333 7666	52791 63958
-L- CAPITAL BLVD 11500		-FLYOVER- WADE AVE 29583 35916	
DHW = 10% DIR = 55% TTST = 1% DUAL = 4%		DHW = 9% DIR = 55% TTST = 0% DUAL = 1%	

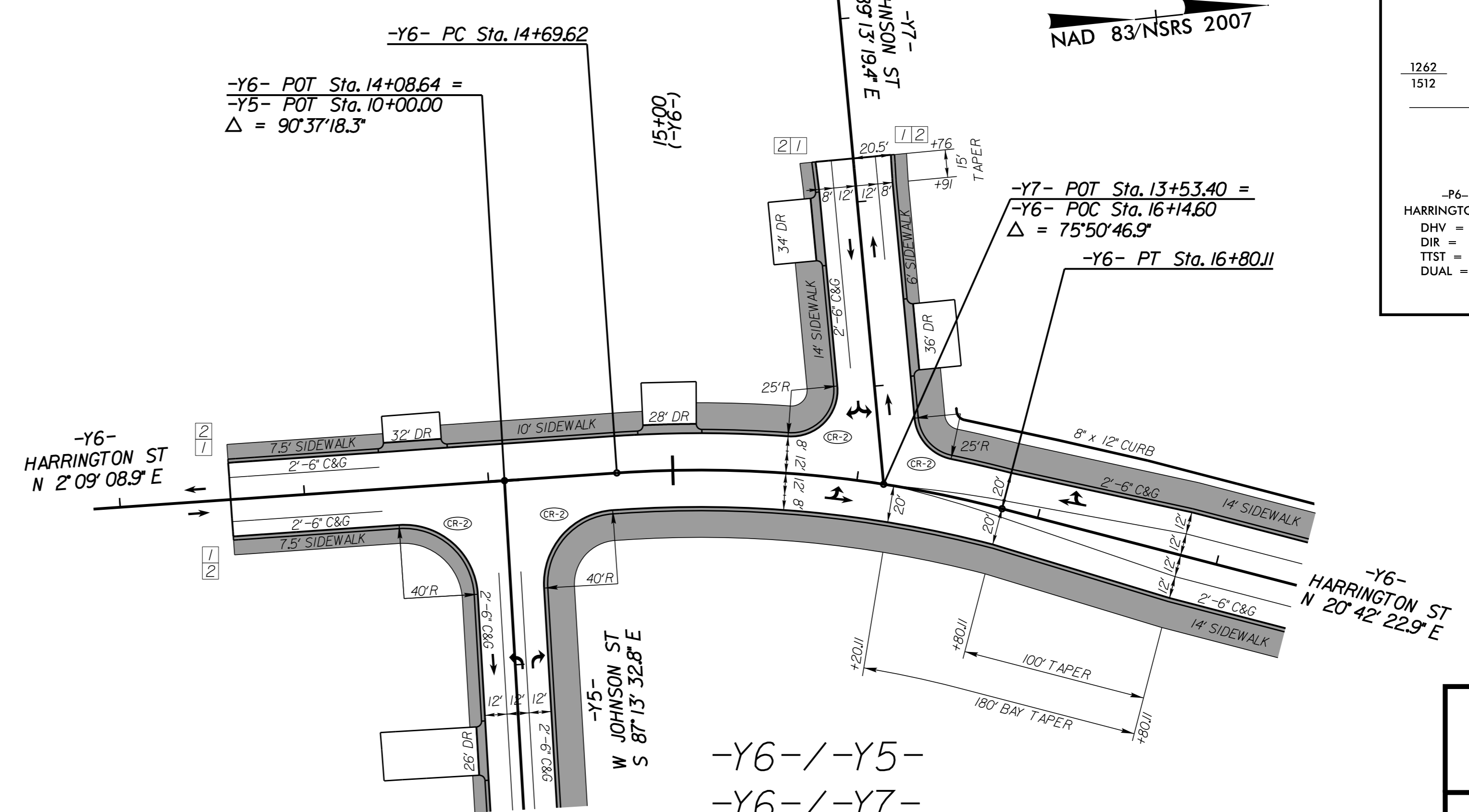
2/02/2016

NAD 83/NSRS 2007



-L-/-Y8-  
 SEE SHEET NOS.6 AND 7 FOR PLAN

NAD 83/NSRS 2007



-Y6-/-Y5-  
 -Y6-/-Y7-  
 FOR CR-2, SEE SHEET 2C-5  
 SEE SHEET NO.8 FOR PLAN

2016 ADT 2036 ADT	W JOHNSON ST AND HARRINGTON ST	
1262 1512	HARRINGTON ST -Y6-	531 656
HARRINGTON ST DHW = 9% DIR = 65% TTST = 0% DUAL = 1%		731 856
-Y6- POT Sta. 16+80.11		7495 9079
-Y5- W JOHNSON ST S 87°13'32.8" E		100 100
-Y6- HARRINGTON ST N 20°42'22.9" E		5702 6910

**INTERSECTION DETAILS**