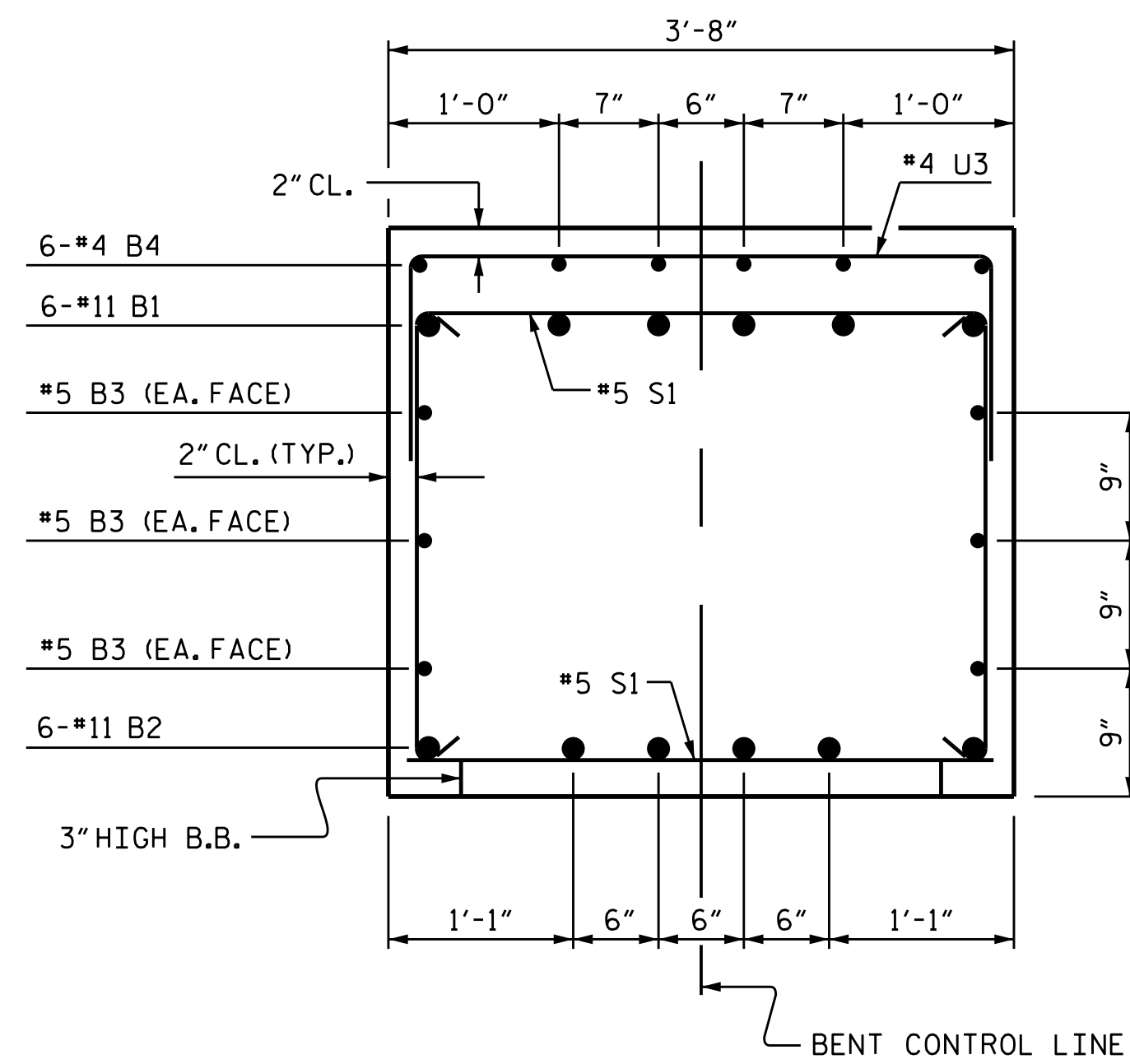
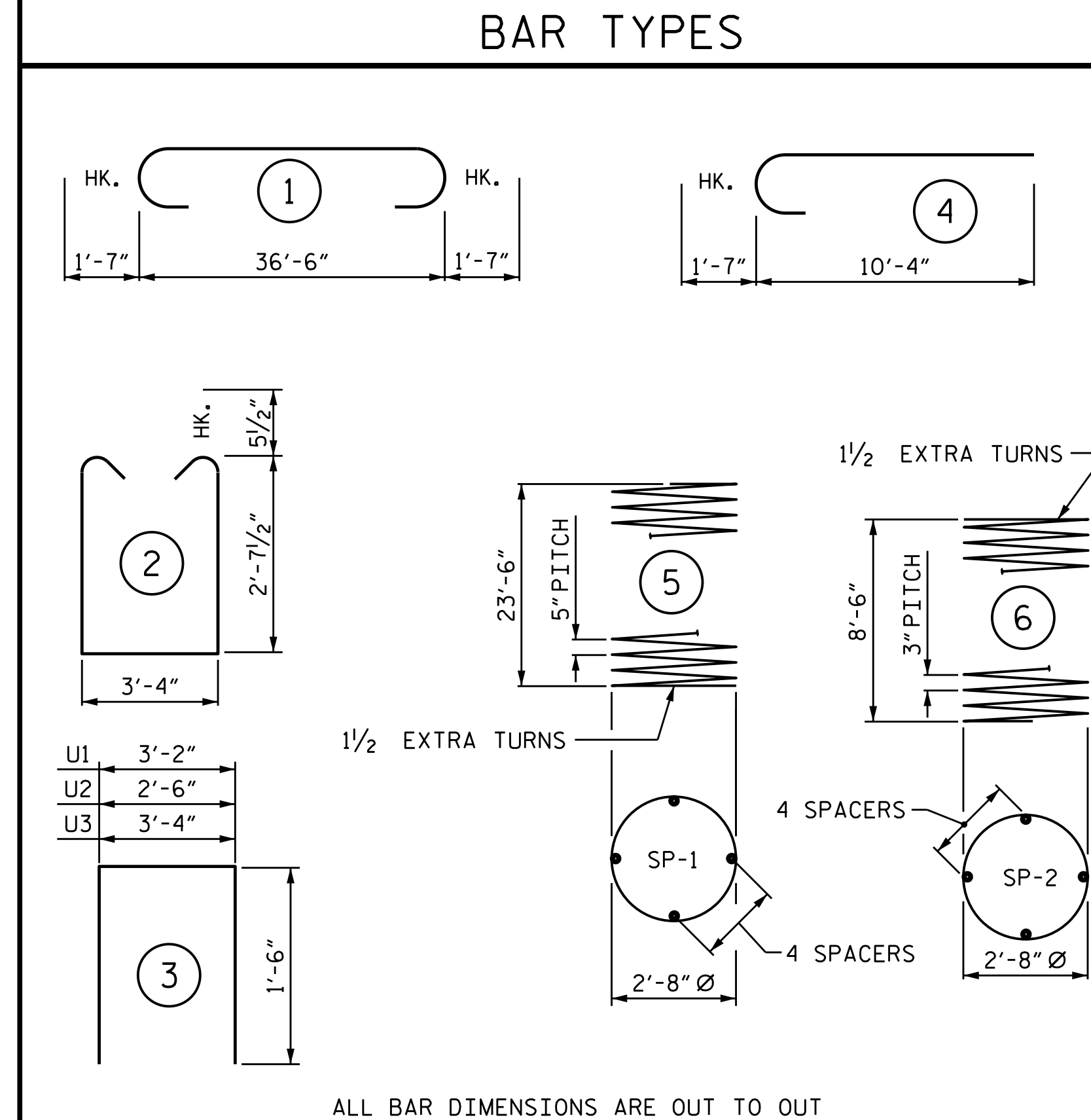


**SECTION A-A**

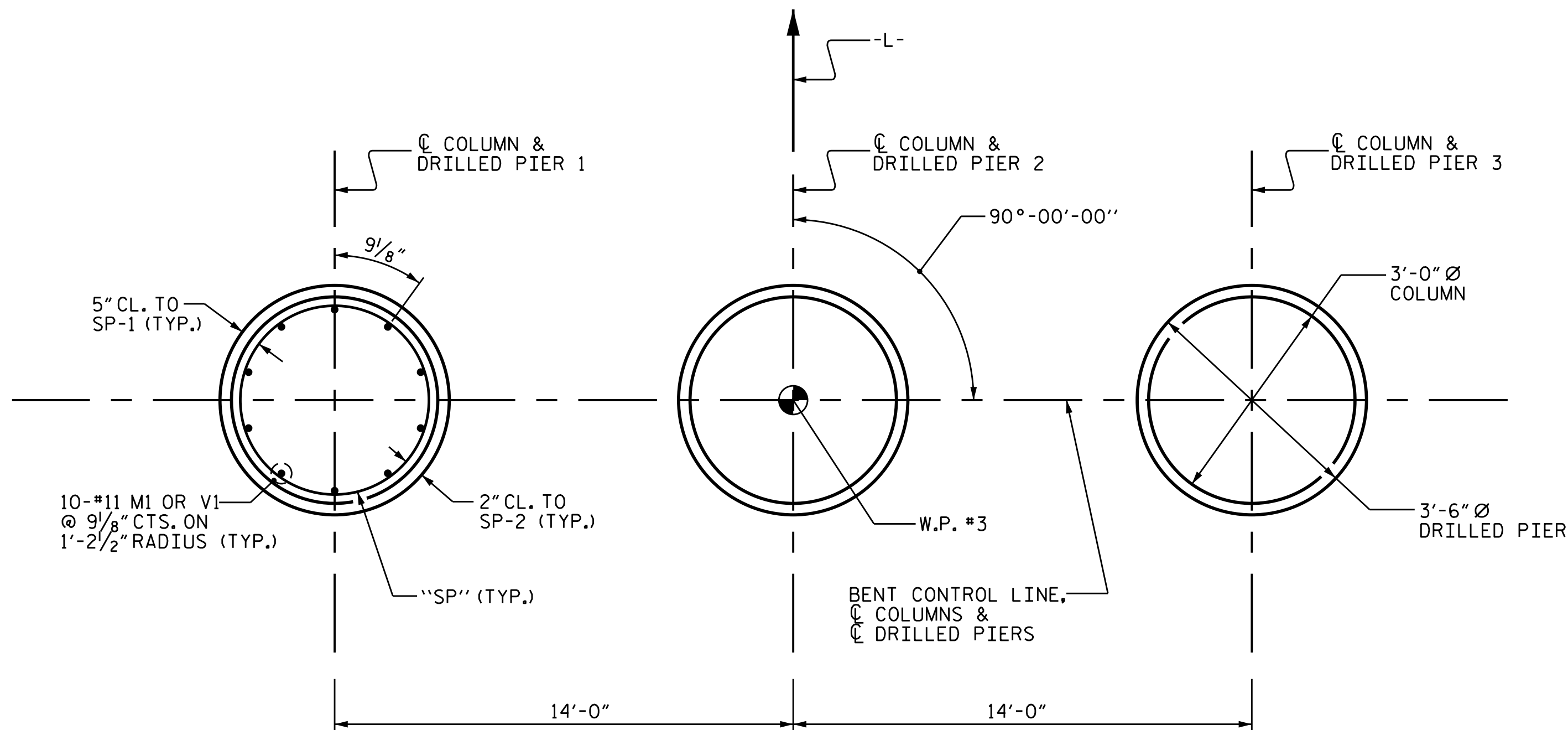


**SECTION B-B**

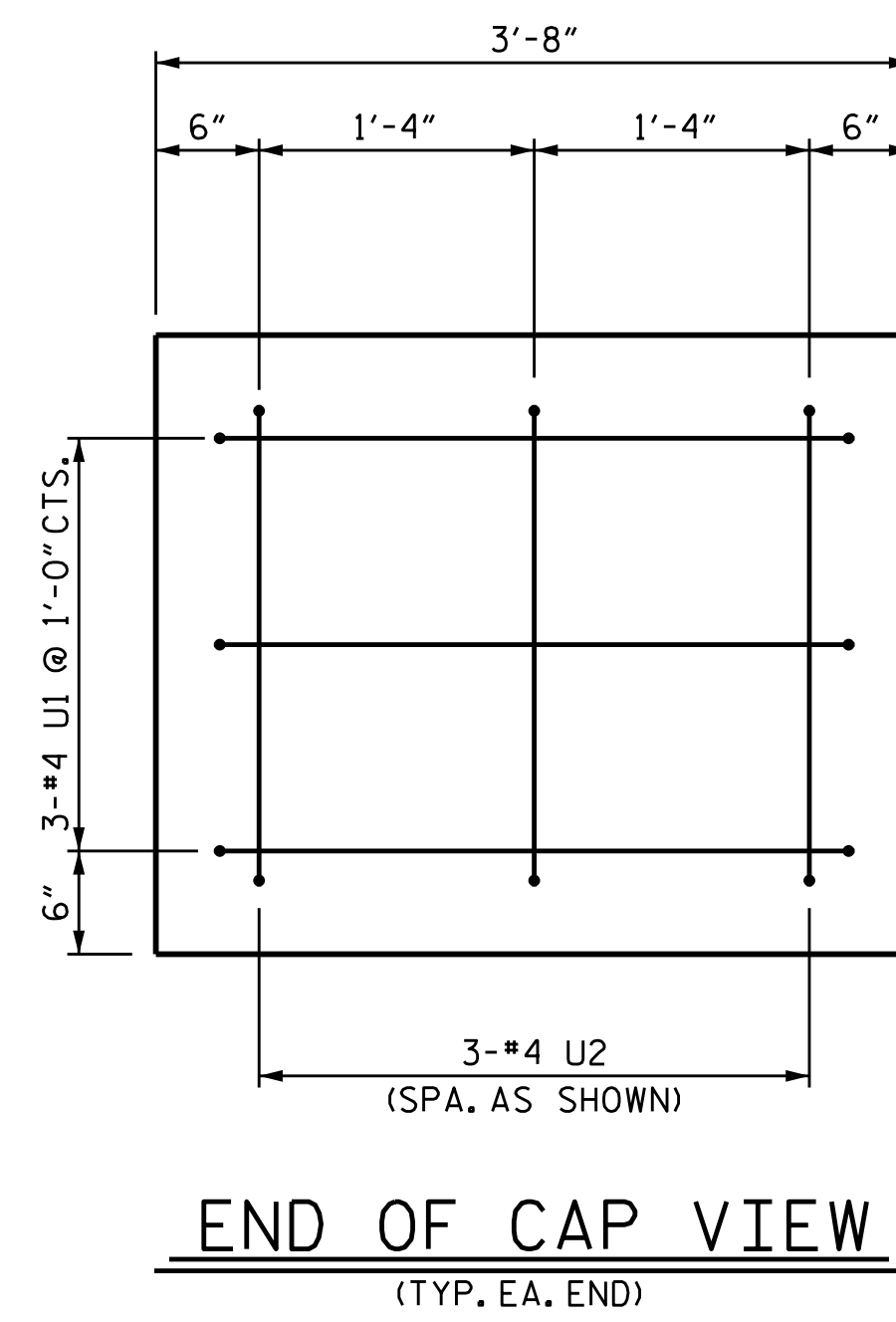


ALL BAR DIMENSIONS ARE OUT TO OUT

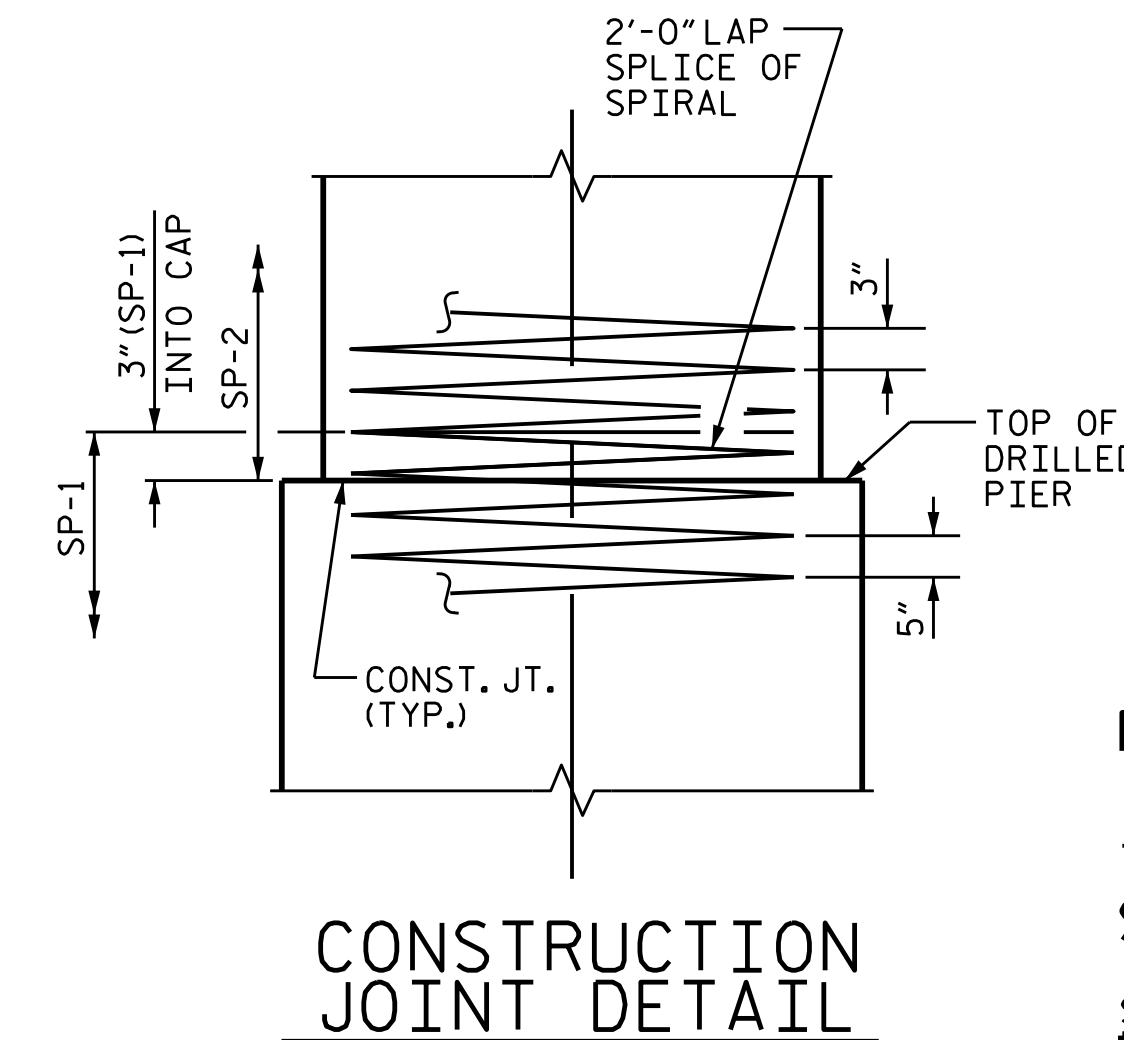
BILL OF MATERIAL					
BAR	NO.	SIZE	TYPE	LENGTH	WEIGHT
B1	6	#11	1	39'-8"	1,264
B2	6	#11	STR.	36'-8"	1,169
B3	6	#5	STR.	36'-8"	229
B4	6	#4	STR.	3'-2"	13
M1	30	#11	STR.	34'-1"	5,433
S1	40	#5	2	9'-6"	396
U1	6	#4	3	6'-2"	25
U2	6	#4	3	5'-6"	22
U3	35	#4	3	6'-4"	148
V1	30	#11	4	11'-11"	1,899
REINFORCING STEEL				10,598 LBS.	
SPIRAL REINFORCING STEEL					
SP-1	3	*	5	477'-1"	1,493
SP-2	3	**	6	292'-11"	587
SPIRAL COLUMN REINFORCING STEEL				2,080 LBS.	
* THE SP-1 SPIRAL REINFORCING STEEL SHALL BE W31 OR D-31 COLD DRAWN WIRE OR #5 PLAIN OR DEFORMED BAR					
** THE SP-2 SPIRAL REINFORCING STEEL SHALL BE W20 OR D-20 COLD DRAWN WIRE OR #4 PLAIN OR DEFORMED BAR					
CLASS A CONCRETE BREAKDOWN					
POUR #2 COLUMNS				6.5 CU.YDS.	
POUR #3 CAP				15.6 CU.YDS.	
TOTAL CLASS A CONCRETE				22.1 CU.YDS.	
DRILLED PIERS:					
POUR #1 DRILLED PIERS				25.7 CU.YDS.	
3'-6" Ø DRILLED PIER NOT IN SOIL				24.0 LIN. FT.	
3'-6" Ø DRILLED PIER IN SOIL				48.0 LIN. FT.	
PERMANENT STEEL CASING FOR 3'-6" Ø DRILLED PIER					
				32.9 LIN. FT.	
CSL TUBES				306 LIN. FT.	



**PLAN OF DRILLED PIERS & COLUMNS**  
(DETAILS ARE TYPICAL FOR EACH DRILLED PIER & COLUMN)

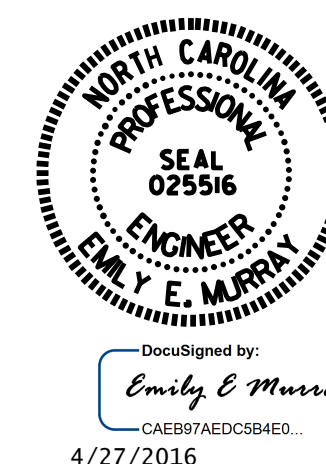


**END OF CAP VIEW**  
(TYP. EA. END)



**CONSTRUCTION JOINT DETAIL**

PROJECT NO. B-4761  
HALIFAX COUNTY  
 STATION: 20+11.00 -L-  
 SHEET 2 OF 2



STATE OF NORTH CAROLINA DEPARTMENT OF TRANSPORTATION RALEIGH					
SUBSTRUCTURE					
BENT 2					
REVISIONS					SHEET NO.
NO.	BY:	DATE:	NO.	BY:	DATE:
1			3		
2			4		
DOCUMENT NOT CONSIDERED FINAL UNLESS ALL SIGNATURES COMPLETED					TOTAL SHEETS 31

DRAWN BY : M.D.PISO DATE : 8-10-2015  
 CHECKED BY : D.G.ELY DATE : 8-26-2015  
 DESIGN ENGINEER OF RECORD: G. KOUCHEKI DATE : 3/14/16