

**LEGEND**

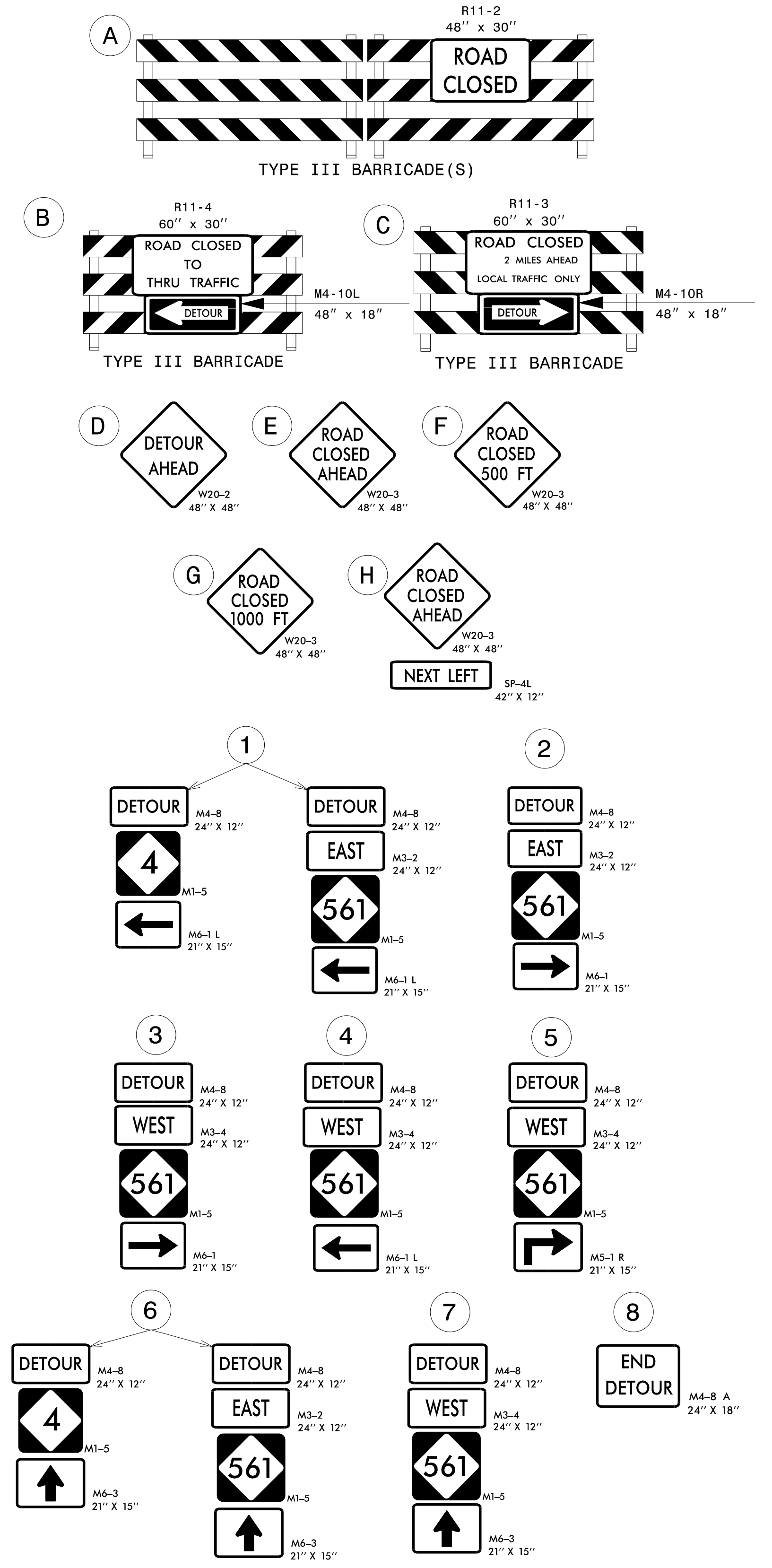
**TRAFFIC CONTROL DEVICES**

BARRICADE (TYPE III)

**TEMPORARY SIGNING**

STATIONARY SIGN

NOTES:  
 TRAFFIC CONTROL DEVICES (A) THROUGH (H) SHALL BE INSTALLED ACCORDING TO RSD 1101.03, SHEET 1 OF 9.  
 TRAFFIC CONTROL DEVICES (1) THROUGH (8) SHALL BE INSTALLED AS SHOWN ON PLAN OR AS DIRECTED BY THE ENGINEER.



3/3/2016  
 R:\TrafficControl\TrafficControl\B-4761\TC-TMP-2.dgn  
 User:rsb|ennings

APPROVED: DATE: 3/4/2016 		<p style="text-align: center;"><b>ROAD CLOSURE AND OFF-SITE DETOUR</b></p>
---------------------------------	--	--