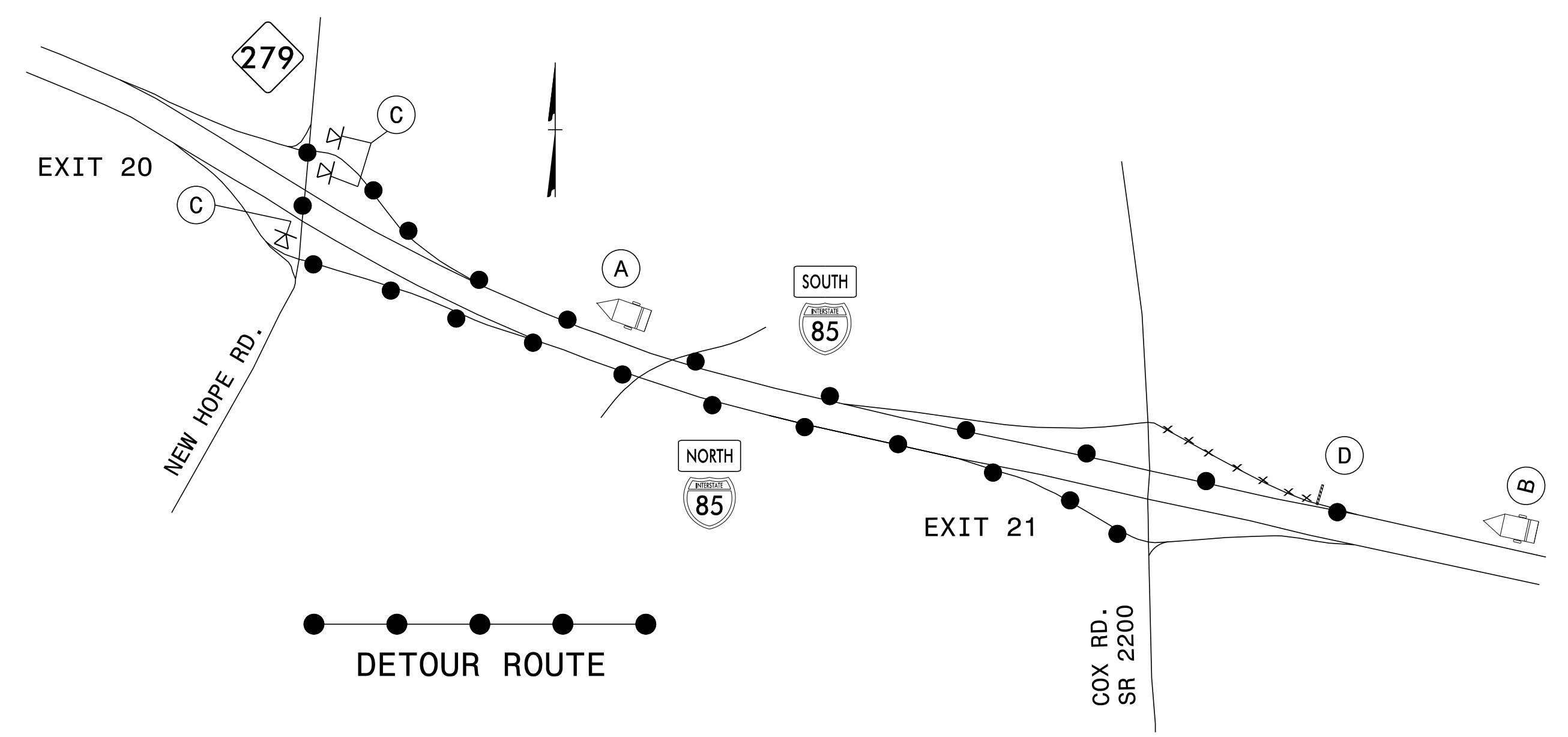


**DETOUR 19: CLOSURE AT I-85 S EXIT 21  
EXIT RAMP TO SR 2200 (COX RD)**



(A)

MESSAGE NO. 1	MESSAGE NO. 2
COX RD DETOUR EXIT 20	

CHANGEABLE MESSAGE SIGN

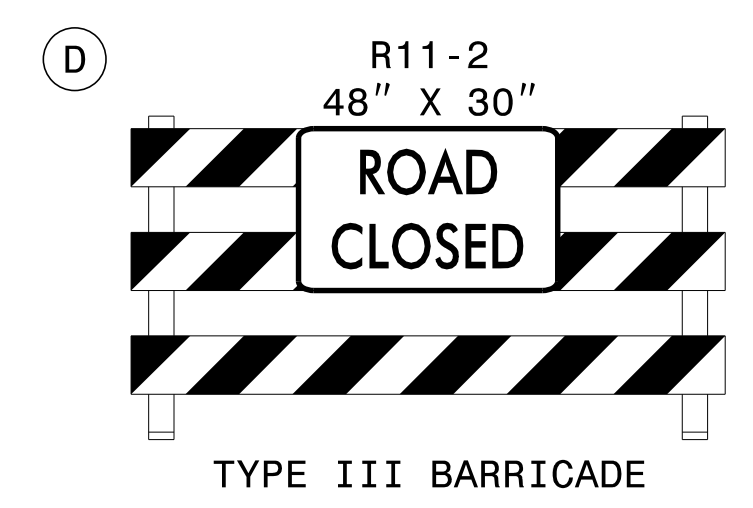
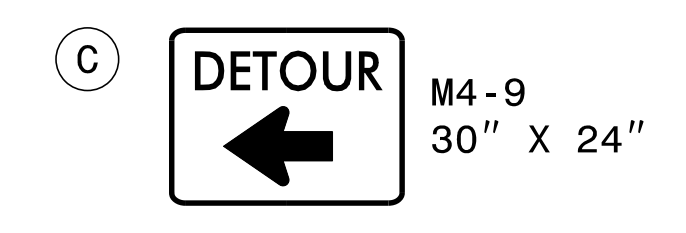
MIN. 500 FT IN ADVANCE OF  
EXIT 20 DECELERATION LANE  
OR AS DIRECTED BY ENGINEER

(B)

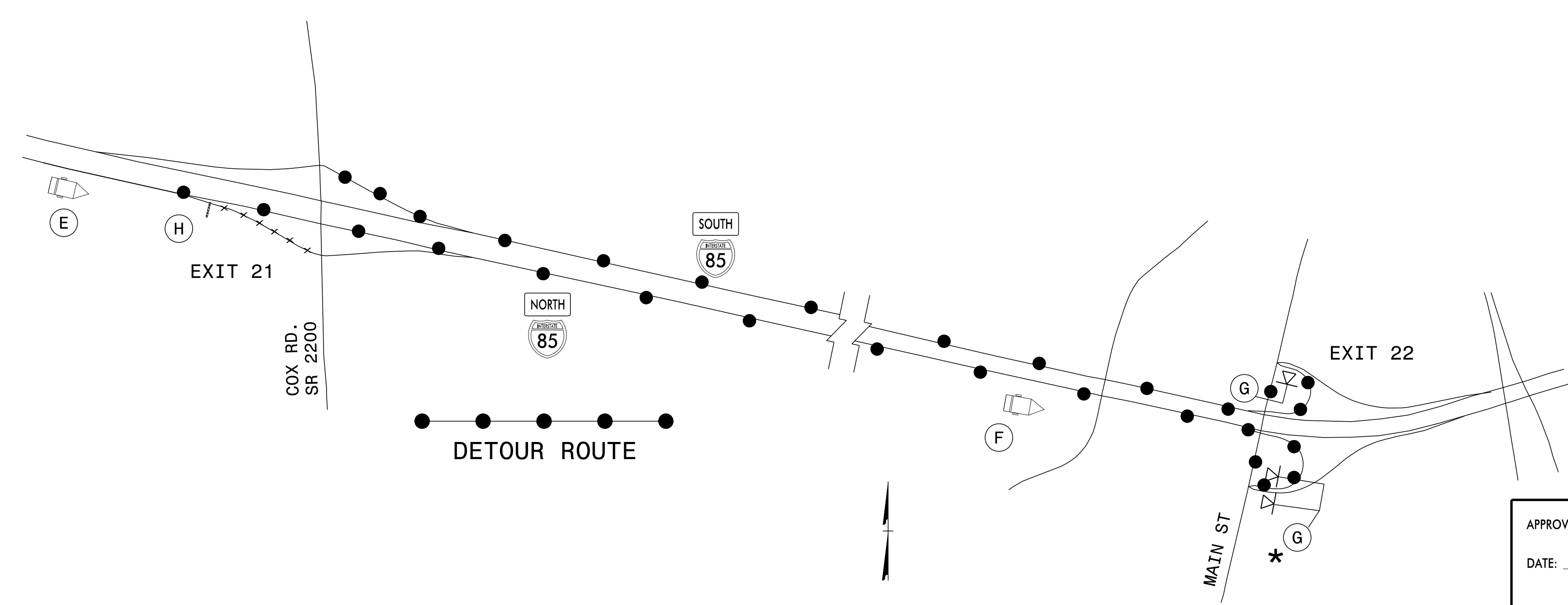
MESSAGE NO. 1	MESSAGE NO. 2
EXIT 21 COX RD CLOSED	DETOUR TO EXIT 20

CHANGEABLE MESSAGE SIGN

MIN. 1000 FT IN ADVANCE OF  
EXIT 21 DECELERATION LANE  
OR AS DIRECTED BY ENGINEER



**DETOUR 20: CLOSURE AT I-85 N EXIT 21  
EXIT RAMP TO SR 2200 (COX RD)**



(E)

MESSAGE NO. 1	MESSAGE NO. 2
EXIT 21 COX RD CLOSED	DETOUR TO EXIT 22

CHANGEABLE MESSAGE SIGN

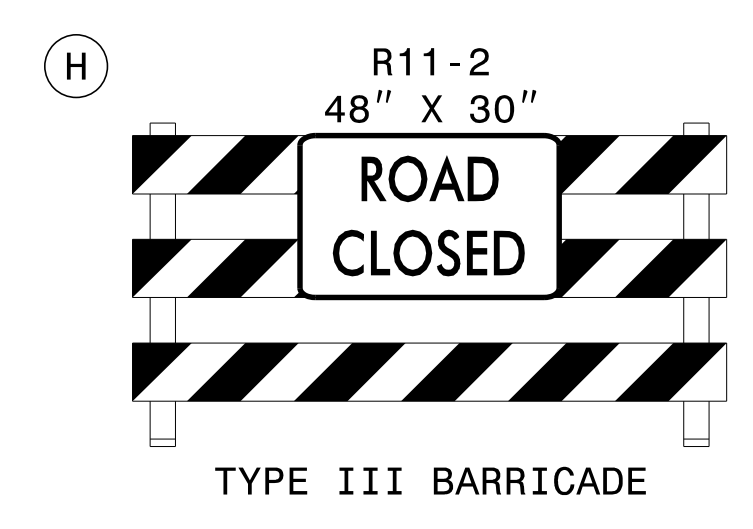
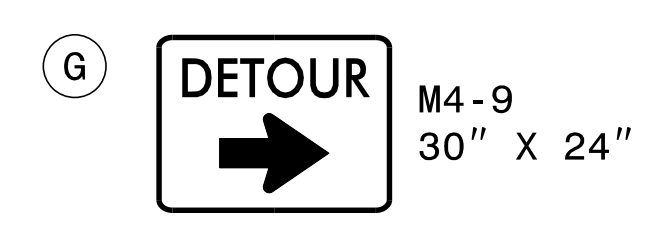
MIN. 500 FT IN ADVANCE OF  
EXIT 21 DECELERATION LANE  
OR AS DIRECTED BY ENGINEER

(F)

MESSAGE NO. 1	MESSAGE NO. 2
COX RD DETOUR EXIT 22	

CHANGEABLE MESSAGE SIGN

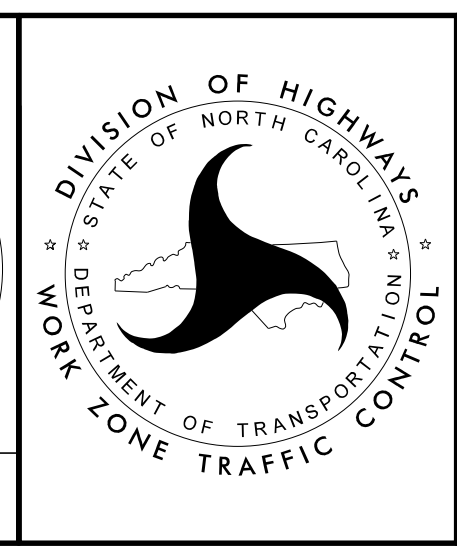
MIN. 1000 FT IN ADVANCE OF  
EXIT 22 DECELERATION LANE  
OR AS DIRECTED BY ENGINEER



\* NOTE: PLACE A PORTABLE  
DETOUR (M4-9) SIGN ON  
EACH SIDE OF EXIT RAMP.

APPROVED: *Lori D. Stouchko*  
DATE: 5/20/2016

**DOCUMENT NOT CONSIDERED FINAL  
UNLESS ALL SIGNATURES COMPLETED**



**I-85 EXIT 21  
RAMP DETOURS  
19 & 20**

5/20/2016 Z:\ProjStore\DivProj\Division2\5893\TrafficControl\CPA\WZTC-Stouchko\Development\I-5893\_TC\_TMP-10-Exit-21\Detours 19 & 20.dgn User:ldstouchko