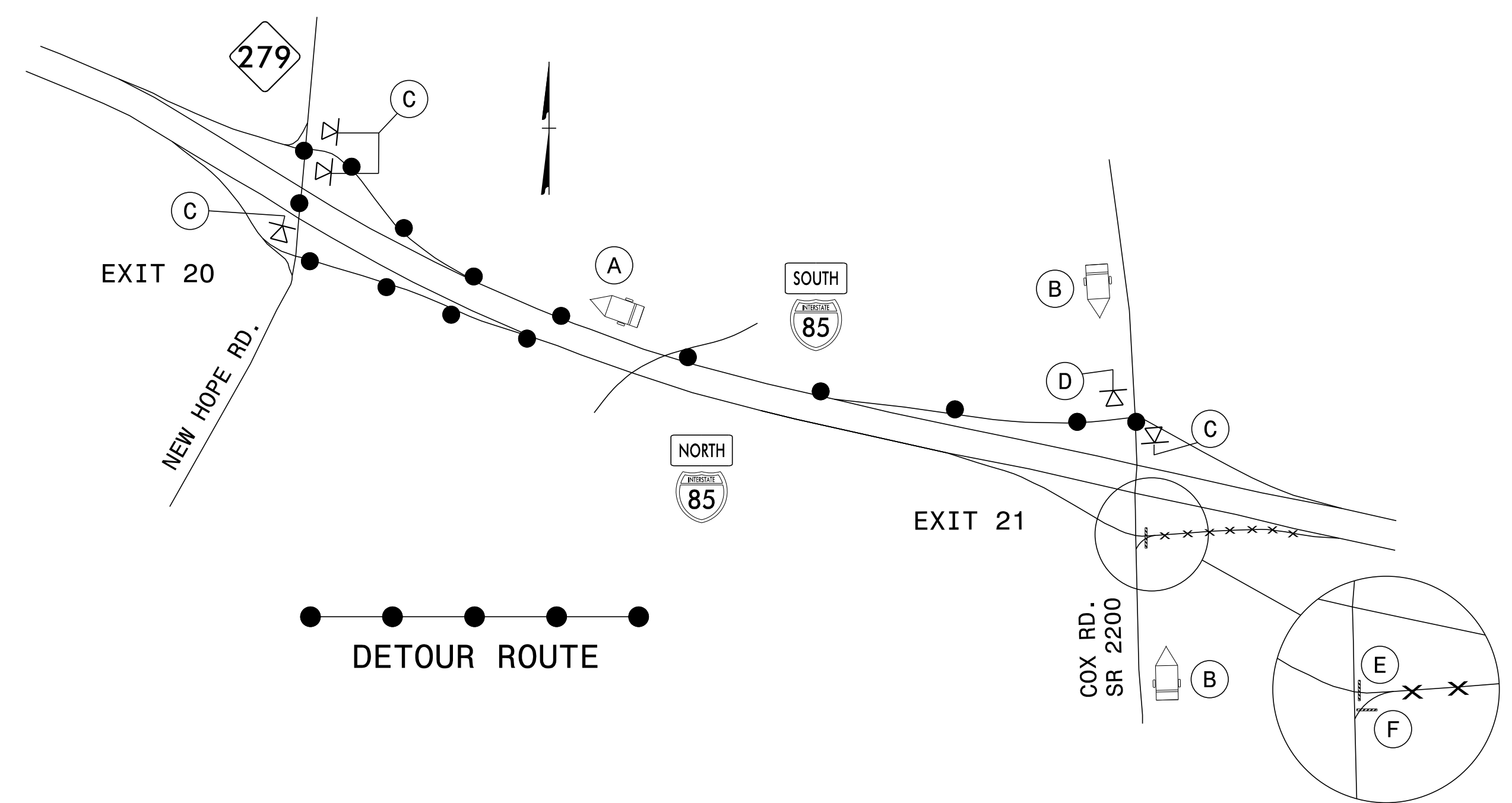


**DETOUR 17: CLOSURE AT I-85 N EXIT 21
ENTRANCE RAMP FROM SR 2200 (COX RD)**



(A)

MESSAGE NO. 1	MESSAGE NO. 2
I-85 S DETOUR EXIT 20	

CHANGEABLE MESSAGE SIGN

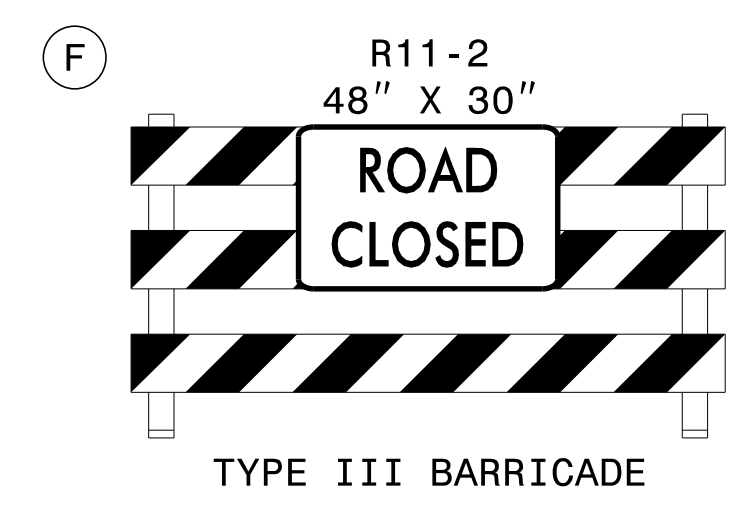
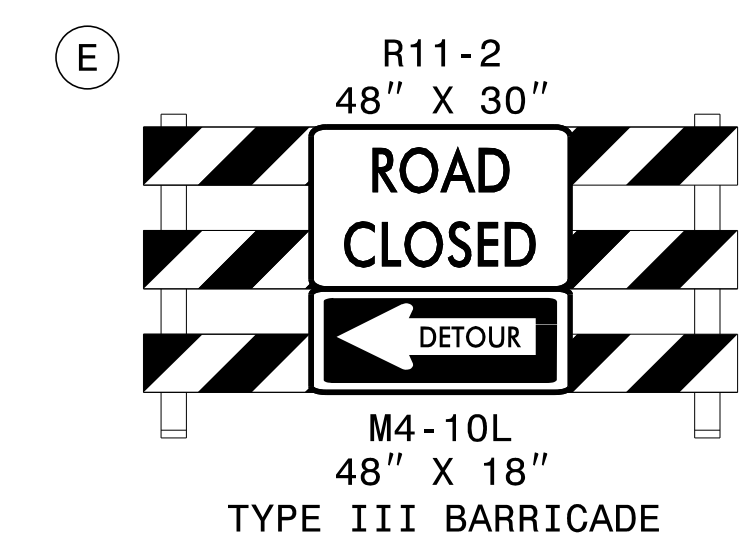
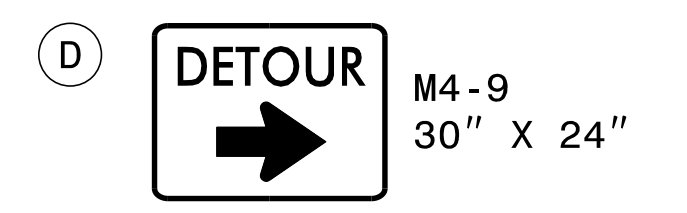
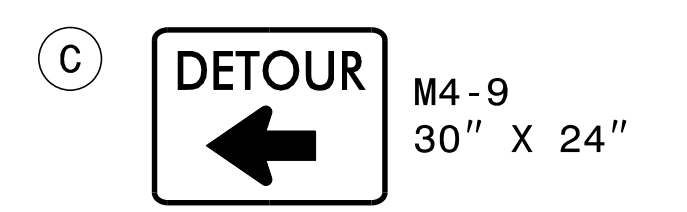
MIN. 500 FT IN ADVANCE OF EXIT 20 DECELERATION LANE OR AS DIRECTED BY ENGINEER

(B)

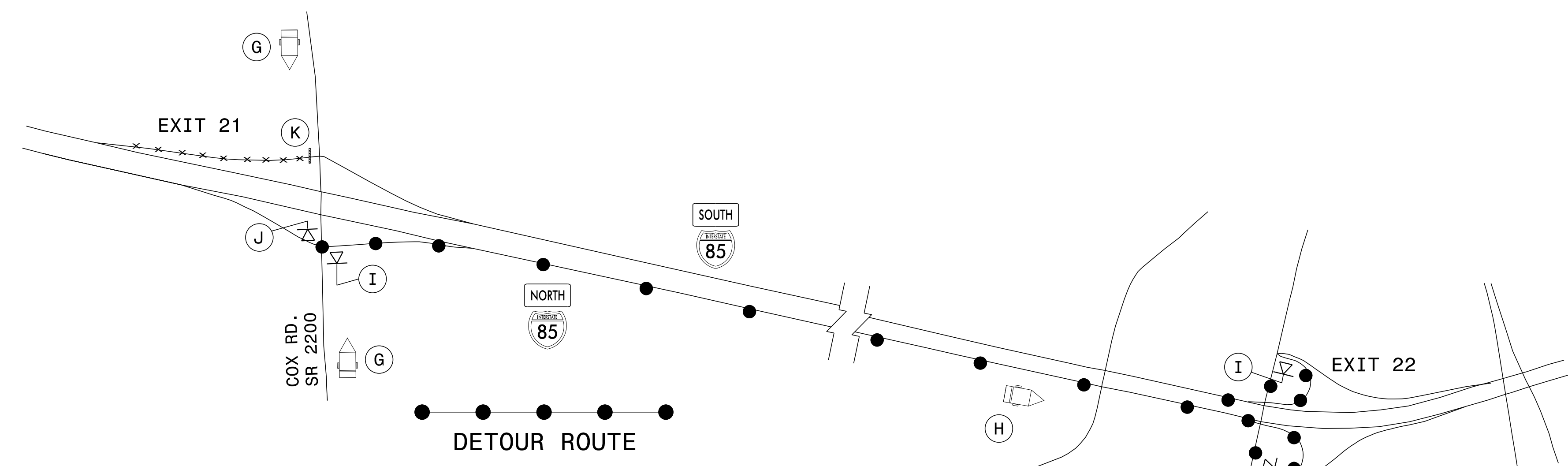
MESSAGE NO. 1	MESSAGE NO. 2
I-85 N RAMP CLOSED	DETOUR USE I-85 S

CHANGEABLE MESSAGE SIGN

MIN. 350 FT IN ADVANCE OF I-85 S ENTRANCE RAMP OR AS DIRECTED BY ENGINEER



**DETOUR 18: CLOSURE AT I-85 S EXIT 21
ENTRANCE RAMP FROM SR 2200 (COX RD)**



(G)

MESSAGE NO. 1	MESSAGE NO. 2
I-85 S RAMP CLOSED	DETOUR USE I-85 N

CHANGEABLE MESSAGE SIGN

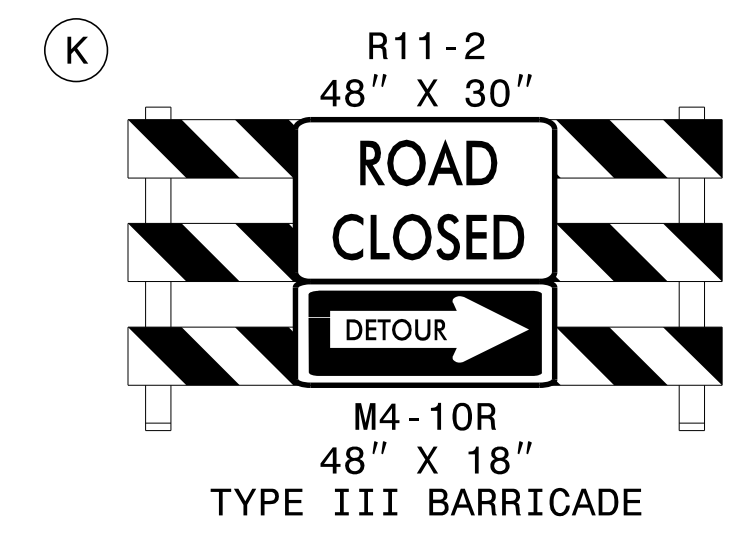
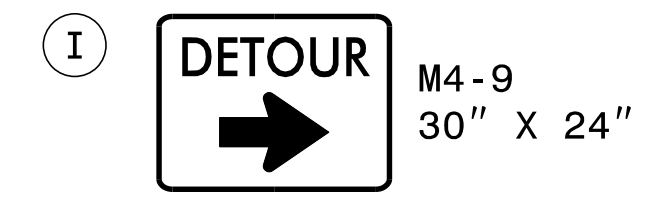
MIN. 350 FT IN ADVANCE OF I-85 S ENTRANCE RAMP OR AS DIRECTED BY ENGINEER

(H)

MESSAGE NO. 1	MESSAGE NO. 2
I-85 S DETOUR EXIT 22	

CHANGEABLE MESSAGE SIGN

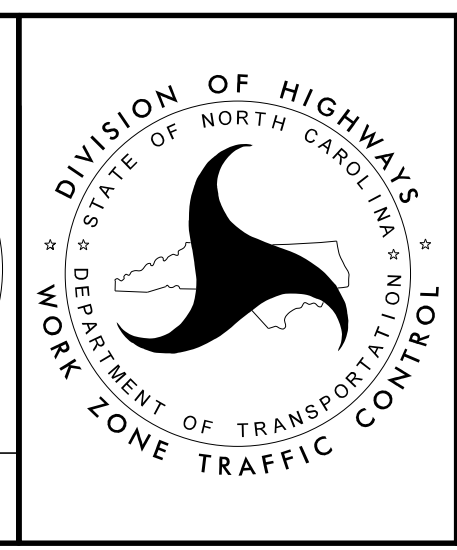
MIN. 1000 FT IN ADVANCE OF EXIT 22 DECELERATION LANE OR AS DIRECTED BY ENGINEER



* NOTE: PLACE A PORTABLE DETOUR (M4-9) SIGN ON EACH SIDE OF EXIT RAMP.

APPROVED: *Lori D. Stoucho*
DATE: 5/20/2016

**DOCUMENT NOT CONSIDERED FINAL
UNLESS ALL SIGNATURES COMPLETED**



**I-85 EXIT 21
RAMP DETOURS
17 & 18**

5/20/2016 Z:\ProjStore\DivProj\Division2\5893\TrafficControl\CP\MZTC-Stouchko\Development\I-5893_TC_TMP-09-Exit_2\Detours 17 & 18.dgn User:ldstouchko