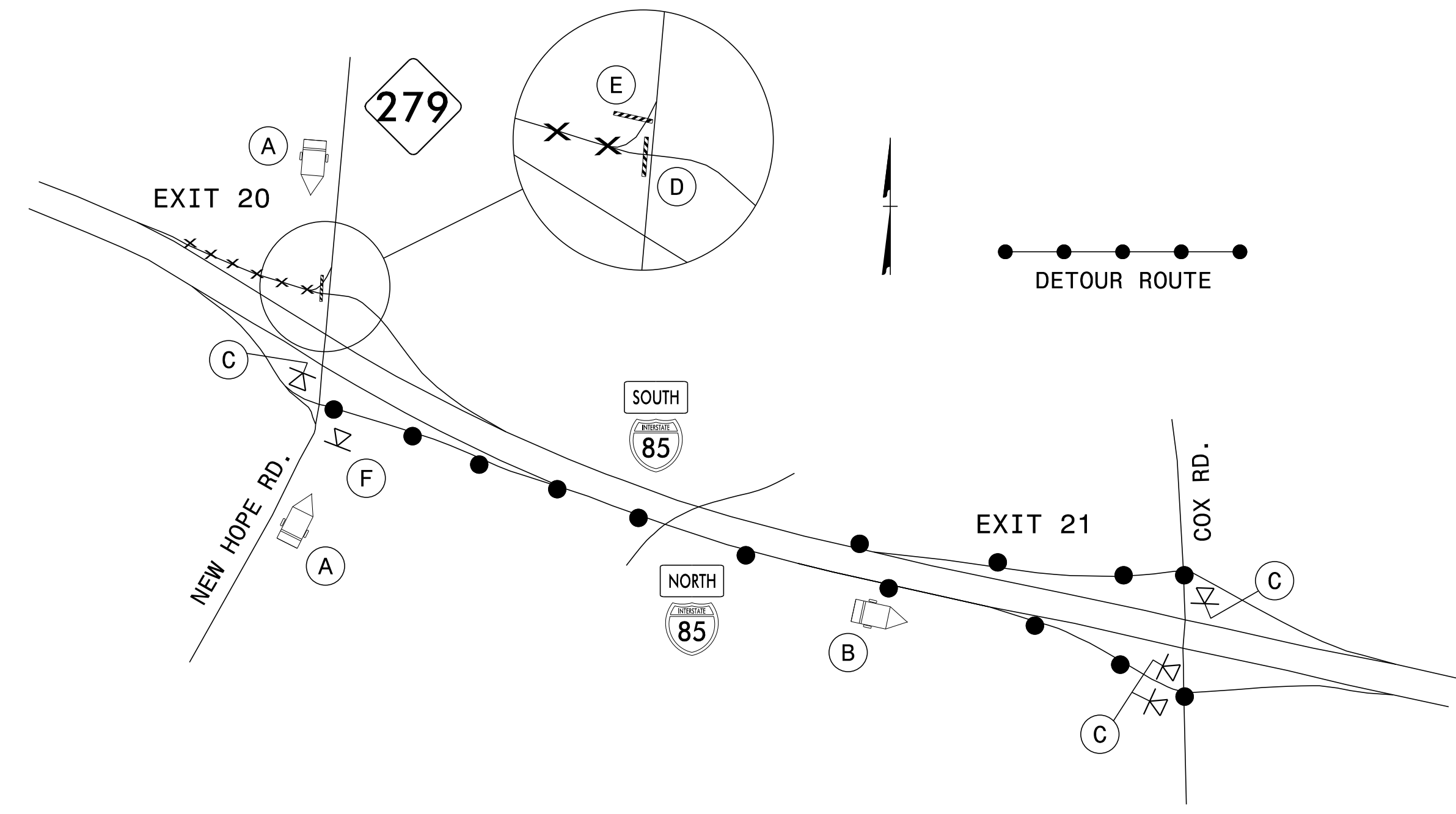


**DETOUR 15: CLOSURE AT I-85 S EXIT 20
ENTRANCE RAMP FROM NC 279 (NEW HOPE RD)**



(A)

MESSAGE NO. 1	MESSAGE NO. 2
I-85 S RAMP CLOSED	DETOUR USE I-85 N

CHANGEABLE MESSAGE SIGN

MIN. 350 FT IN ADVANCE OF I-85 S ENTRANCE RAMP OR AS DIRECTED BY ENGINEER

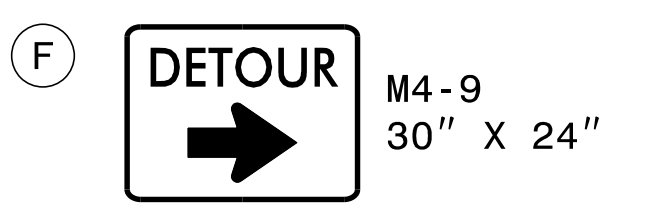
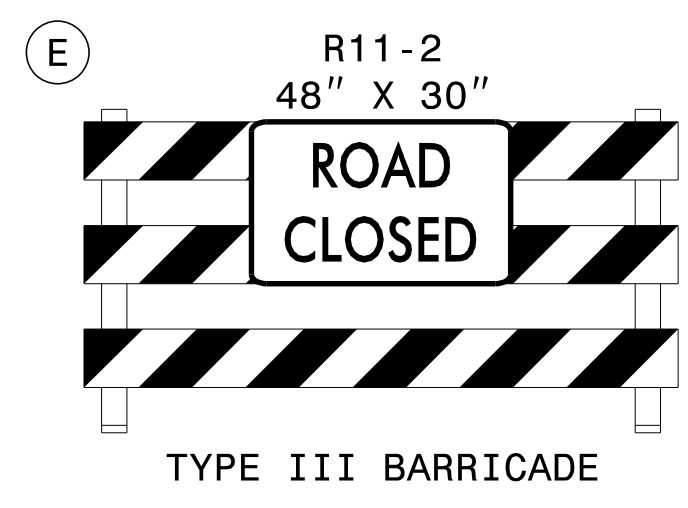
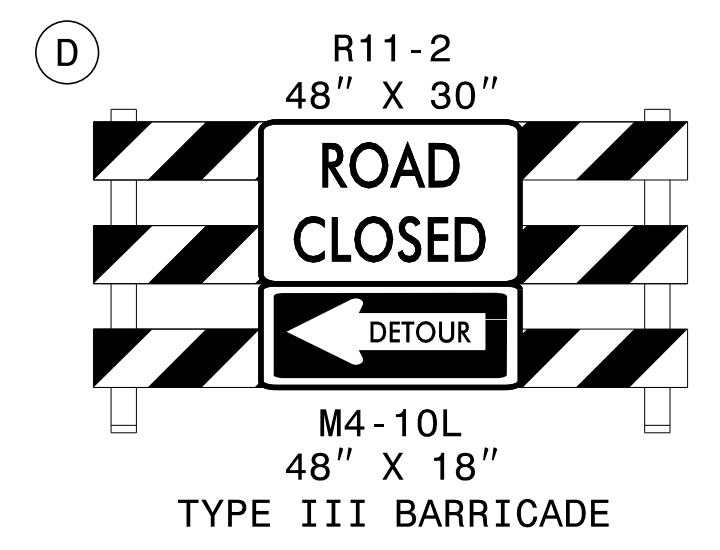
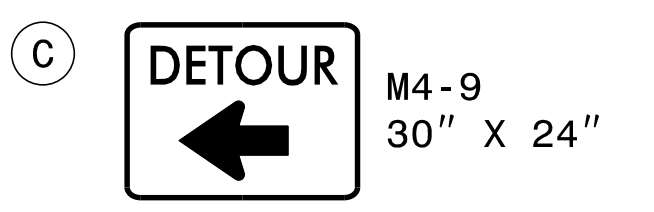
MIN. 350 FT IN ADVANCE OF I-85 N ENTRANCE RAMP OR AS DIRECTED BY ENGINEER

(B)

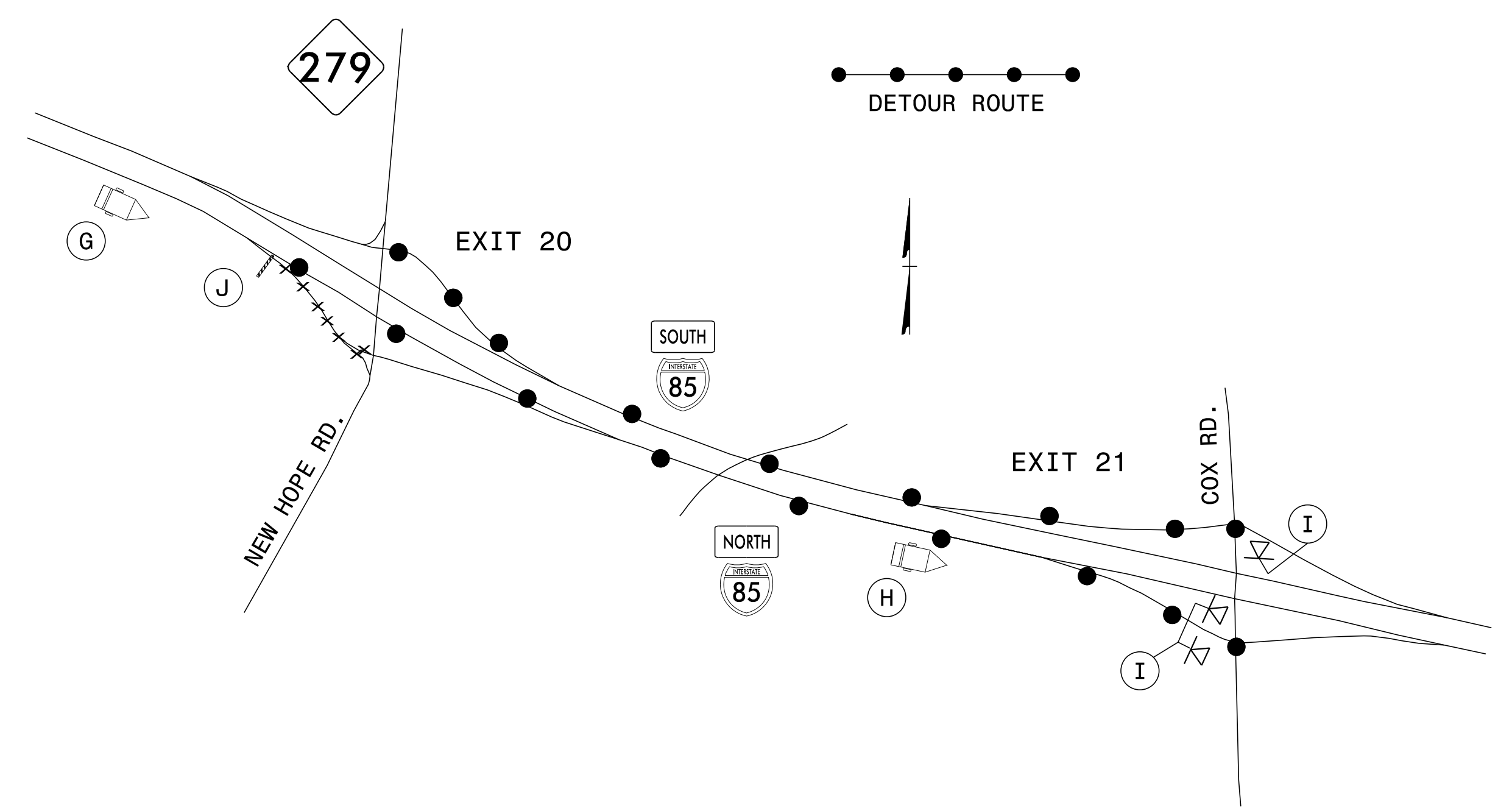
MESSAGE NO. 1	MESSAGE NO. 2
I-85 S DETOUR EXIT 21	

CHANGEABLE MESSAGE SIGN

MIN. 500 FT IN ADVANCE OF EXIT 21 DECELERATION LANE OR AS DIRECTED BY ENGINEER



**DETOUR 16: CLOSURE AT I-85 N EXIT 20
EXIT RAMP TO NC 279 (NEW HOPE RD)**



(G)

MESSAGE NO. 1	MESSAGE NO. 2
EXIT 20 NC 279 RAMP CLOSED	DETOUR TO EXIT 21

CHANGEABLE MESSAGE SIGN

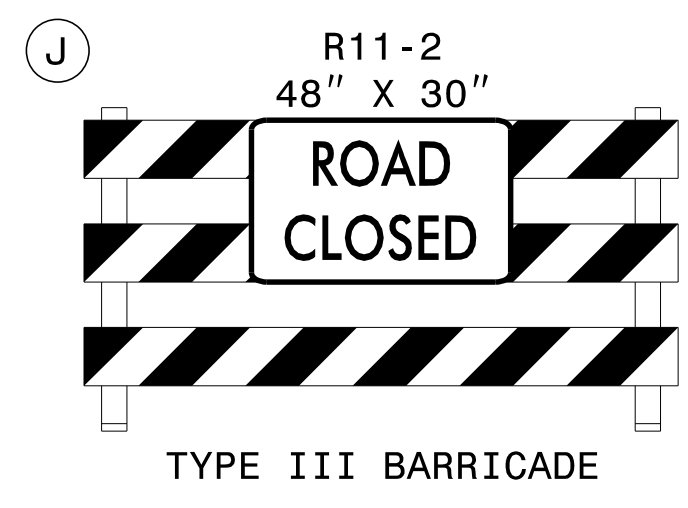
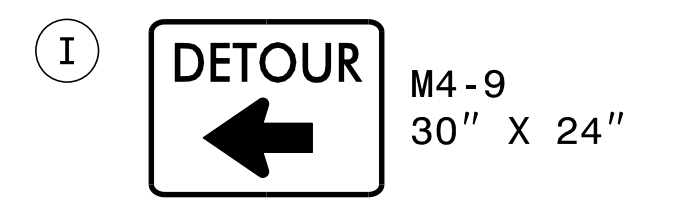
MIN. 1000 FT IN ADVANCE OF EXIT 20 EXIT GORE OR AS DIRECTED BY ENGINEER

(H)

MESSAGE NO. 1	MESSAGE NO. 2
NC 279 DETOUR EXIT 21	

CHANGEABLE MESSAGE SIGN

MIN. 500 FT IN ADVANCE OF EXIT 21 DECELERATION LANE OR AS DIRECTED BY ENGINEER



APPROVED: *Lori D. Stoucho*
DATE: 5/20/2016

DOCUMENT NOT CONSIDERED FINAL
UNLESS ALL SIGNATURES COMPLETED



I-85 EXIT 20
RAMP DETOURS
15 & 16

5/20/2016 Z:\Projects\Store\Div\Proj\Division2\5893\TrafficControl\CP\WZTC-Stouchko\Development\I-5893_TC_TMP-08-Exit_20_Detours_15 & 16.dgn User:ldstouchko