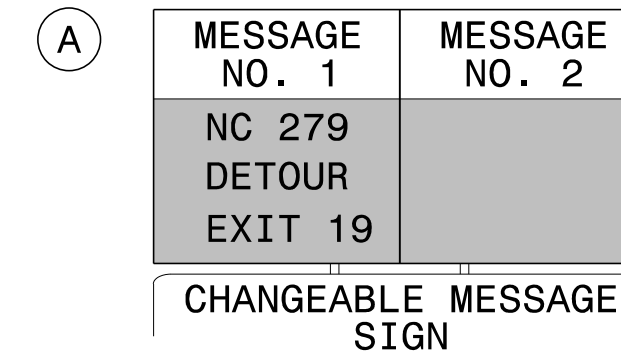
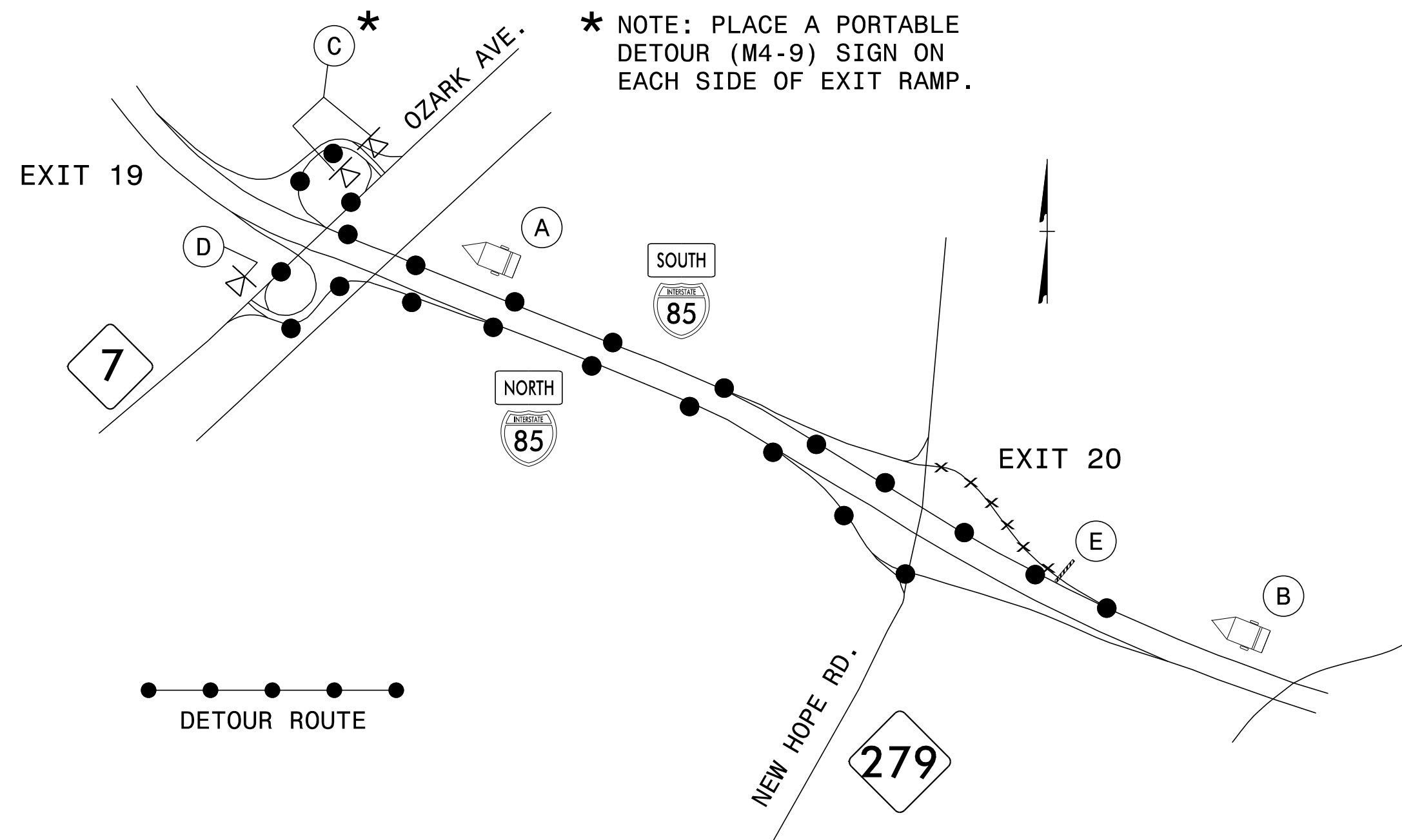
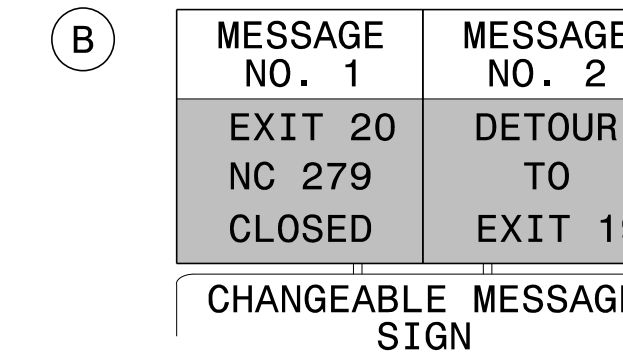


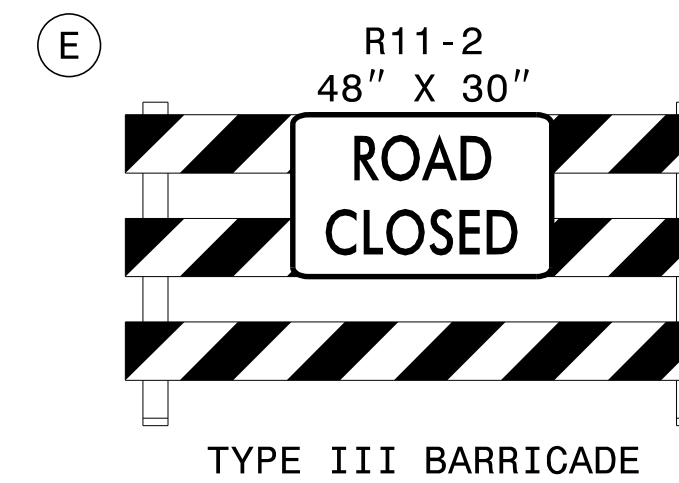
**DETOUR 13: CLOSURE AT I-85 S EXIT 20
EXIT RAMP TO NC 279 (NEW HOPE RD)**



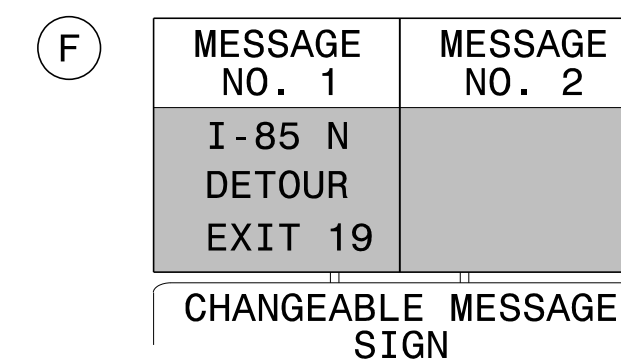
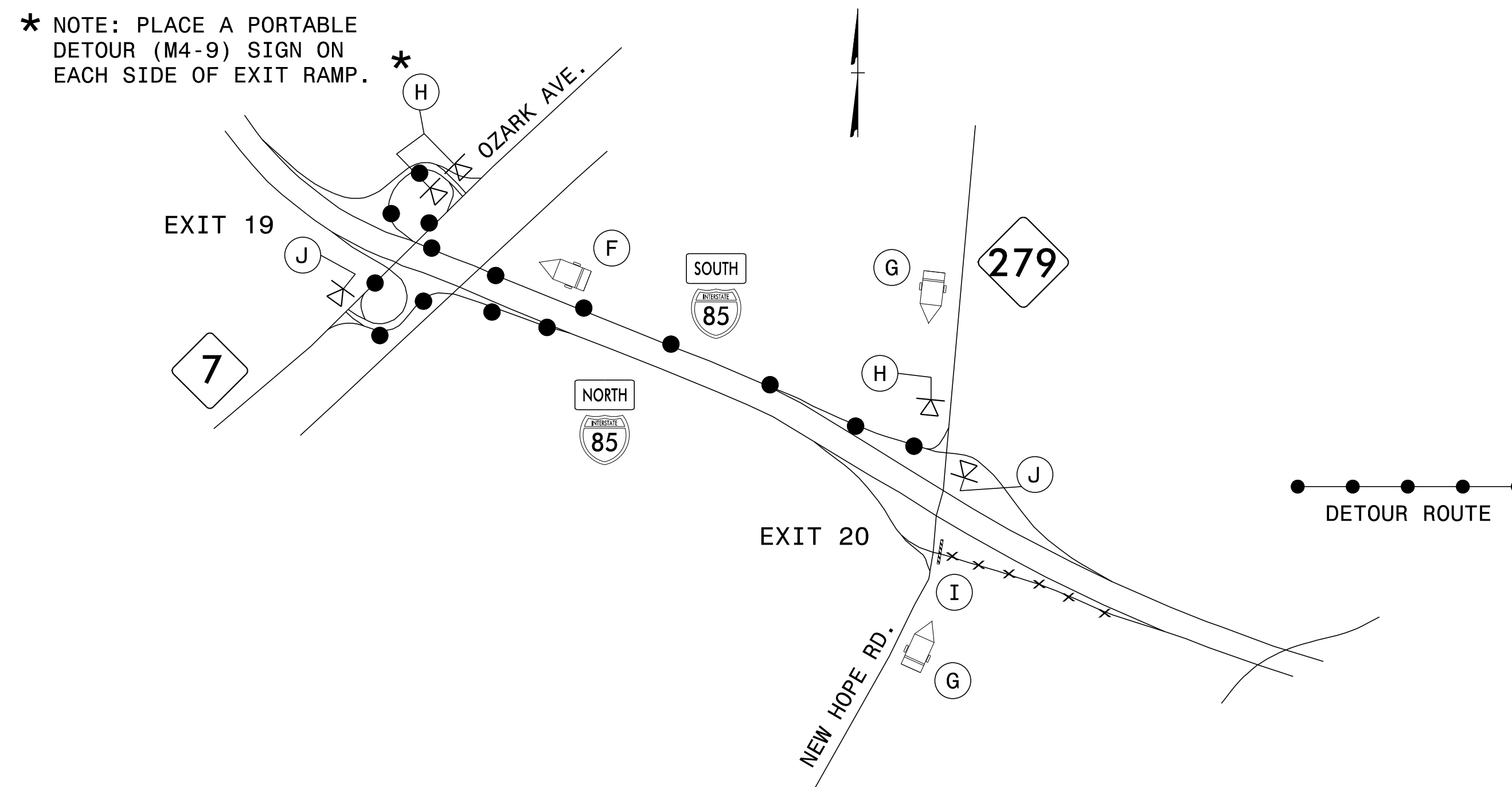
MIN. 1000 FT IN ADVANCE OF EXIT 19 EXIT GORE OR AS DIRECTED BY ENGINEER



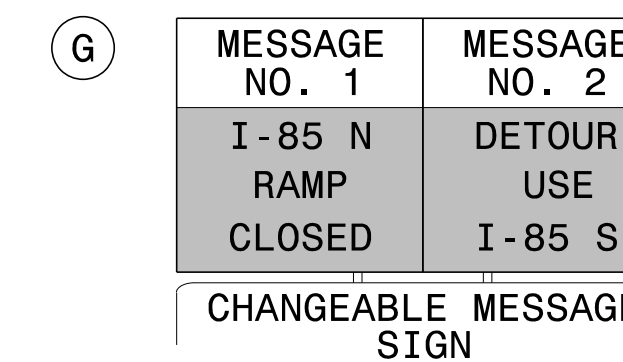
MIN. 500 FT IN ADVANCE OF EXIT 20 DECELERATION LANE OR AS DIRECTED BY ENGINEER



**DETOUR 14: CLOSURE AT I-85 N EXIT 20
ENTRANCE RAMP FROM NC 279 (NEW HOPE RD)**

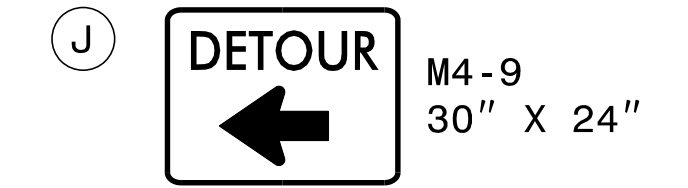
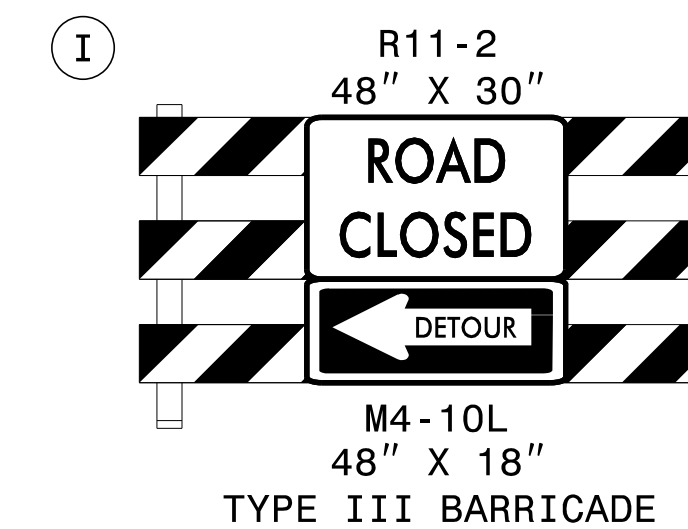


MIN. 1000 FT IN ADVANCE OF EXIT 19 EXIT GORE OR AS DIRECTED BY ENGINEER



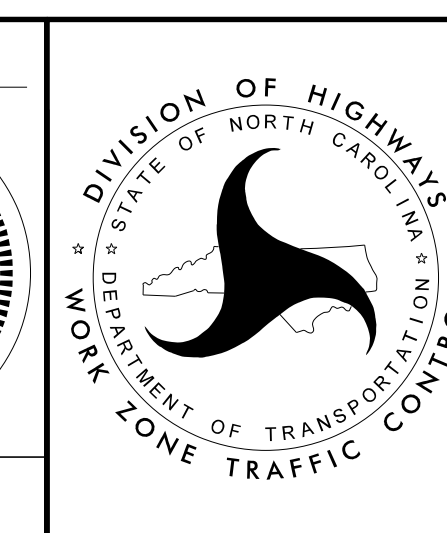
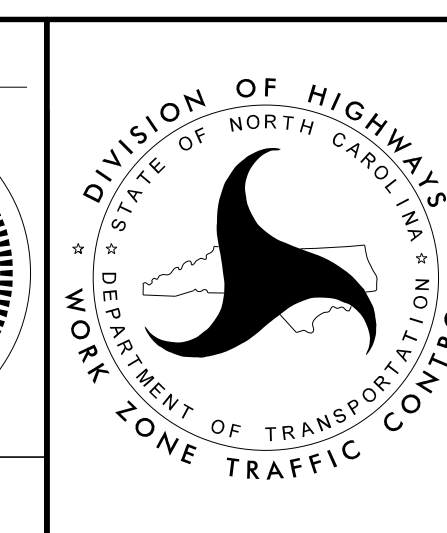
MIN. 350 FT IN ADVANCE OF I-85 S ENTRANCE RAMP OR AS DIRECTED BY ENGINEER

MIN. 350 FT IN ADVANCE OF I-85 N ENTRANCE RAMP OR AS DIRECTED BY ENGINEER



APPROVED: *Lori D. Stoucho*
DATE: 5/20/2016

DOCUMENT NOT CONSIDERED FINAL
UNLESS ALL SIGNATURES COMPLETED



I-85 EXIT 20
RAMP DETOURS
13 & 14