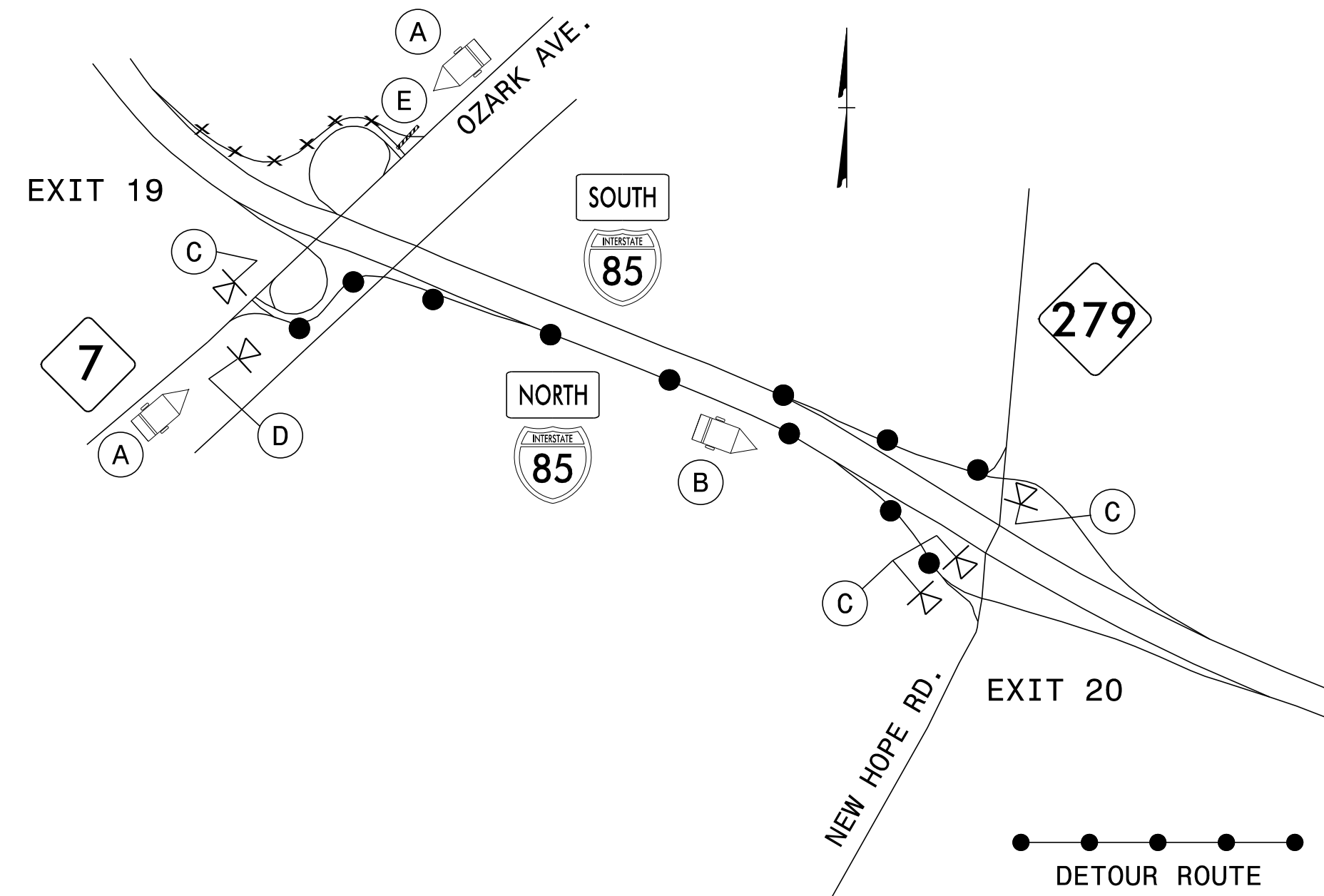


**DETOUR 11: CLOSURE AT I-85 S EXIT 19
ENTRANCE RAMP FROM NC 7 (OZARK AVE)**



(A)

MESSAGE NO. 1	MESSAGE NO. 2
I-85 S RAMP CLOSED	DETOUR USE I-85 N

CHANGEABLE MESSAGE SIGN

MIN. 350 FT IN ADVANCE OF I-85 S ENTRANCE RAMP OR AS DIRECTED BY ENGINEER

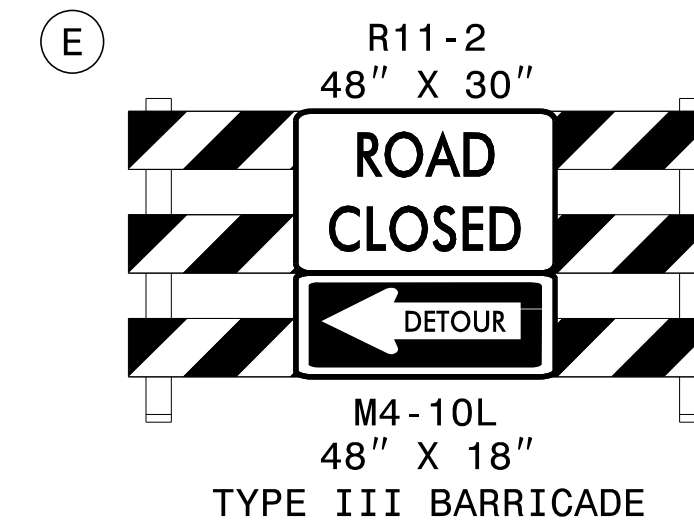
MIN. 350 FT IN ADVANCE OF I-85 N ENTRANCE RAMP OR AS DIRECTED BY ENGINEER

(B)

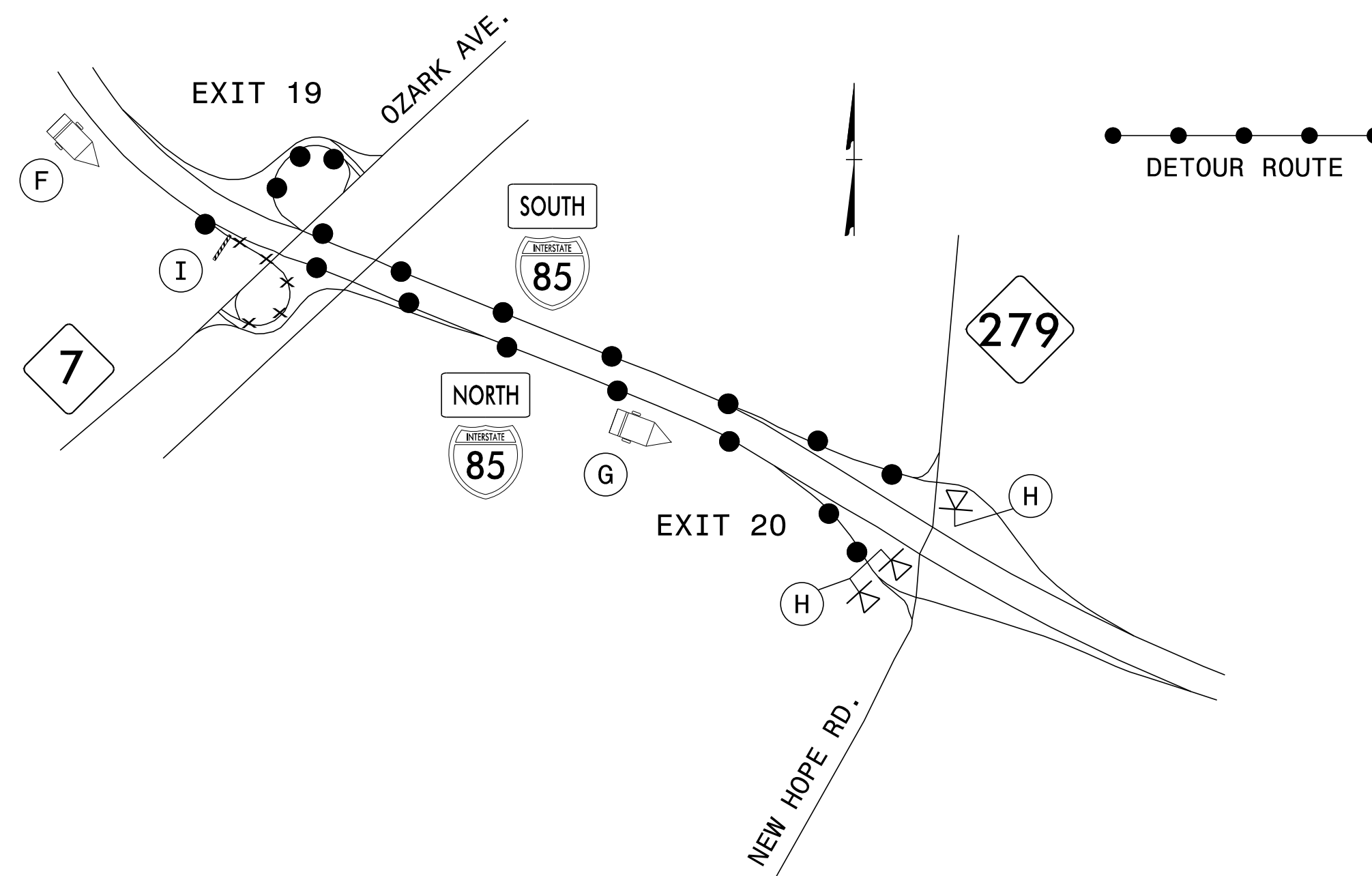
MESSAGE NO. 1	MESSAGE NO. 2
I-85 S DETOUR EXIT 20	

CHANGEABLE MESSAGE SIGN

MIN. 1000 FT IN ADVANCE OF EXIT 20 EXIT GORE OR AS DIRECTED BY ENGINEER



**DETOUR 12: CLOSURE AT I-85 N EXIT 19
EXIT LOOP TO NC 7 (OZARK AVE)**



(F)

MESSAGE NO. 1	MESSAGE NO. 2
EXIT 19 NC 7 CLOSED	DETOUR TO EXIT 20

CHANGEABLE MESSAGE SIGN

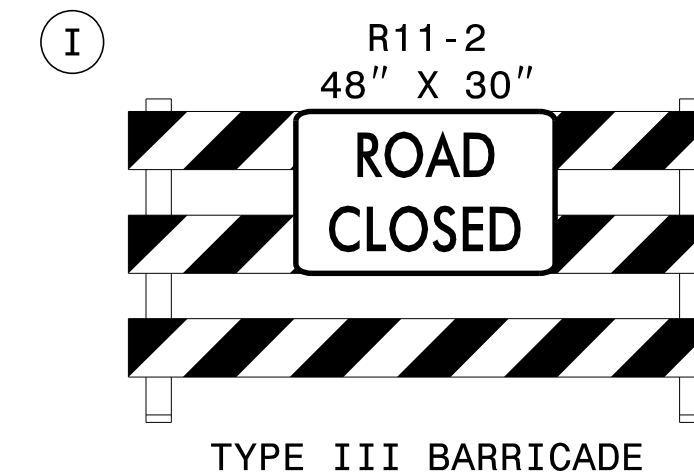
MIN. 1/2 MILE IN ADVANCE OF EXIT 19 DECELERATION LANE OR AS DIRECTED BY ENGINEER

(G)

MESSAGE NO. 1	MESSAGE NO. 2
NC 7 DETOUR EXIT 20	

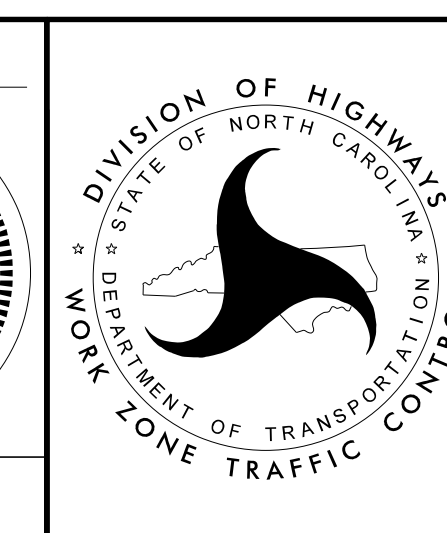
CHANGEABLE MESSAGE SIGN

MIN. 1000 FT IN ADVANCE OF EXIT 20 EXIT GORE OR AS DIRECTED BY ENGINEER



APPROVED: *Lori D. Stoucho*
DATE: 5/20/2016

**DOCUMENT NOT CONSIDERED FINAL
UNLESS ALL SIGNATURES COMPLETED**



**I-85 EXIT 19
RAMP/LOOP DETOURS
11 & 12**