

**DETOUR 9: CLOSURE AT I-85 S EXIT 19
EXIT LOOP TO NC 7 (OZARK AVE)**

* NOTE: PLACE A PORTABLE
DETOUR (M4-9) SIGN ON
EACH SIDE OF EXIT RAMP.

(A)

MESSAGE NO. 1	MESSAGE NO. 2
NC 7 DETOUR EXIT 17	

CHANGEABLE MESSAGE SIGN

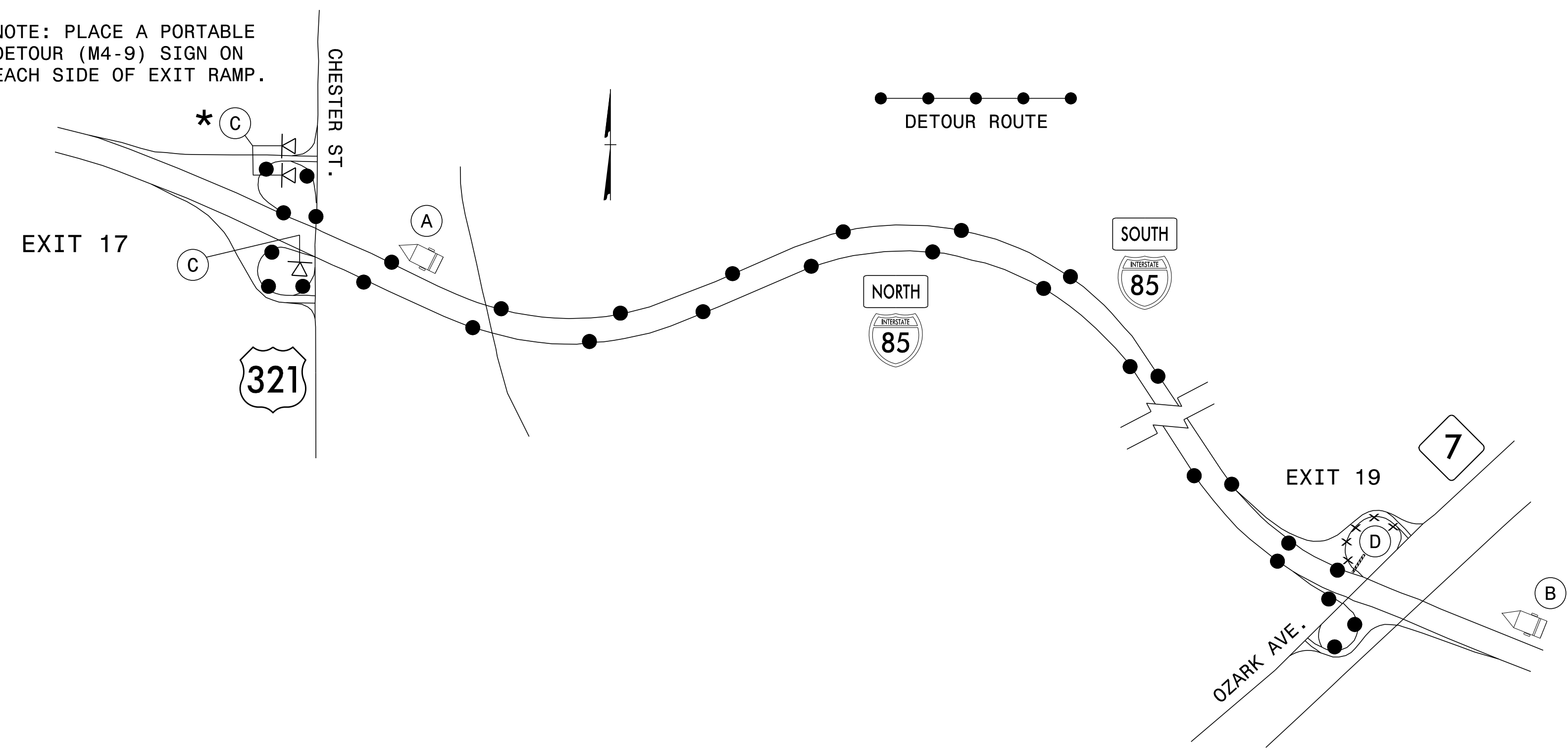
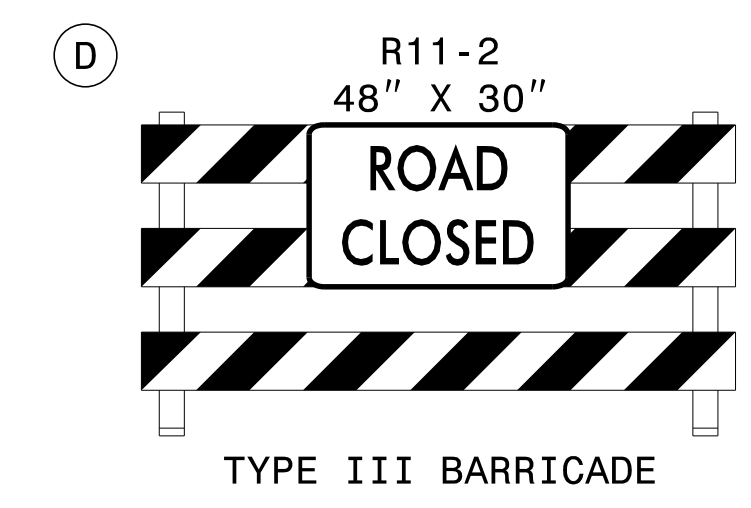
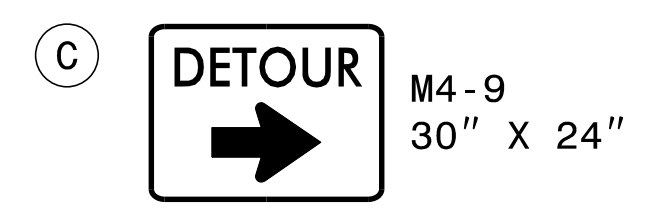
MIN. 1500 FT IN ADVANCE OF
EXIT 17 DECELERATION LANE
OR AS DIRECTED BY ENGINEER

(B)

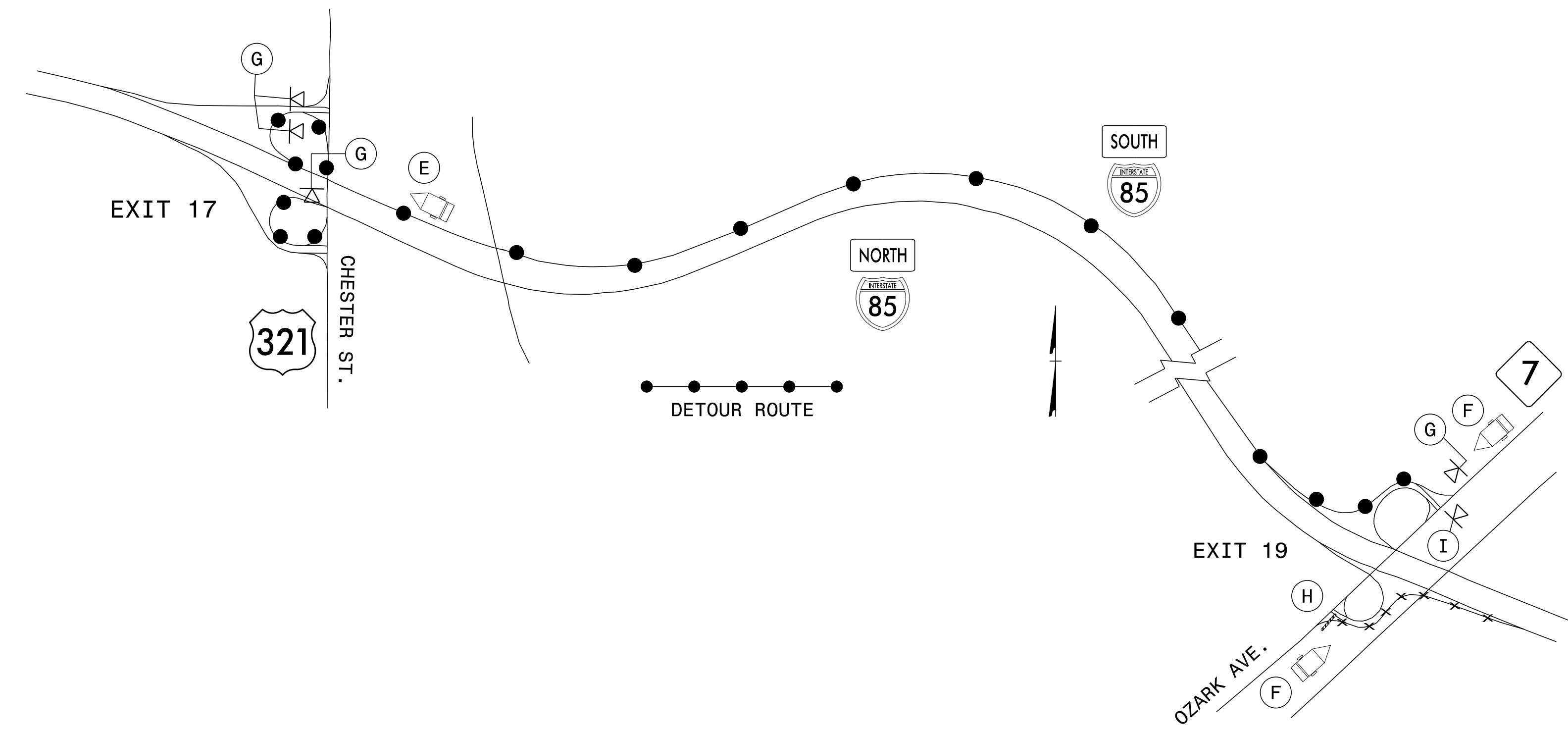
MESSAGE NO. 1	MESSAGE NO. 2
EXIT 19 NC 7 CLOSED	DETOUR TO EXIT 17

CHANGEABLE MESSAGE SIGN

MIN. 1000 FT IN ADVANCE OF
EXIT 19 EXIT GORE OR AS
DIRECTED BY ENGINEER



**DETOUR 10: CLOSURE AT I-85 N EXIT 19
ENTRANCE RAMP FROM NC 7 (OZARK AVE)**



(E)

MESSAGE NO. 1	MESSAGE NO. 2
I-85 N DETOUR EXIT 17	

CHANGEABLE MESSAGE SIGN

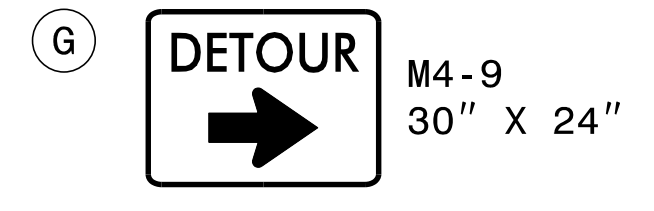
MIN. 1500 FT IN ADVANCE OF
EXIT 17 DECELERATION LANE
OR AS DIRECTED BY ENGINEER

(F)

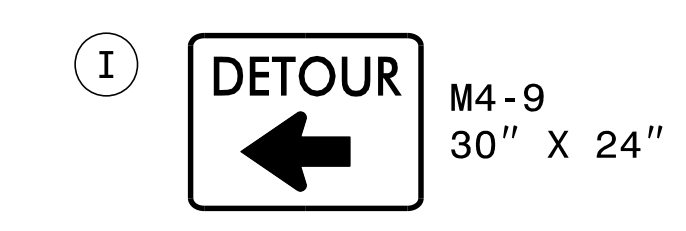
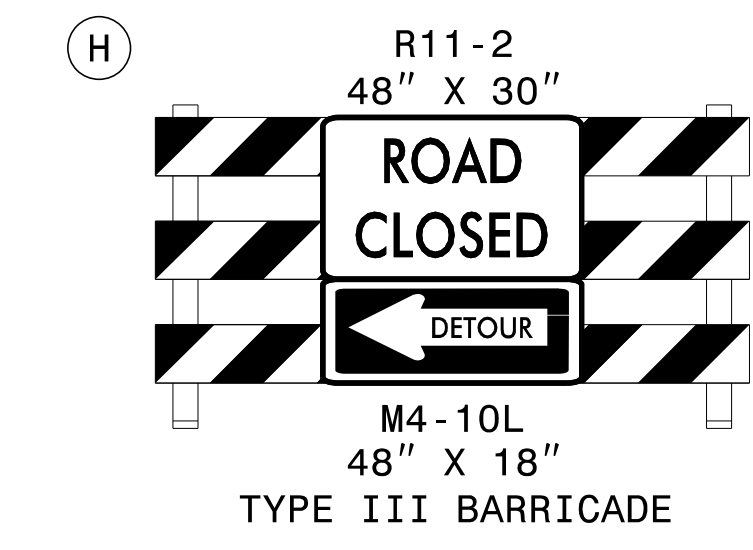
MESSAGE NO. 1	MESSAGE NO. 2
I-85 N RAMP CLOSED	DETOUR USE I-85 S

CHANGEABLE MESSAGE SIGN

MIN. 350 FT IN ADVANCE OF
I-85 S ENTRANCE RAMP
OR AS DIRECTED BY ENGINEER

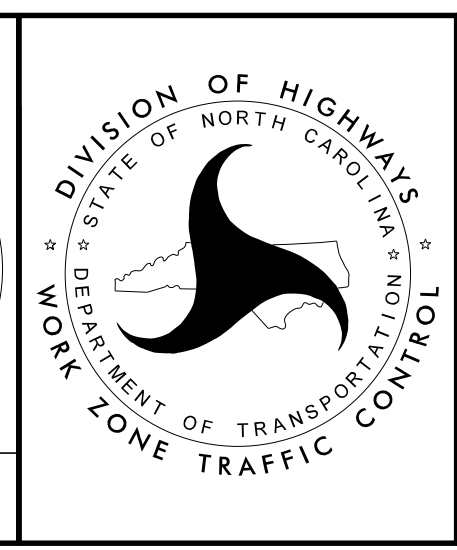


MIN. 350 FT IN ADVANCE OF
I-85 N ENTRANCE RAMP
OR AS DIRECTED BY ENGINEER



APPROVED: *Lori D. Stoucho*
DATE: 5/20/2016

**DOCUMENT NOT CONSIDERED FINAL
UNLESS ALL SIGNATURES COMPLETED**



**I-85 EXIT 19
LOOP/RAMP DETOURS
9 & 10**

5/20/2016 Z:\ProjStore\DivProj\Division2\5893\TrafficControl\CPA\WZTC-Stouchko\Development\I-5893_TC_TMP-05-Exit 19 Detours 9 & 10.dgn User:ldstouchko