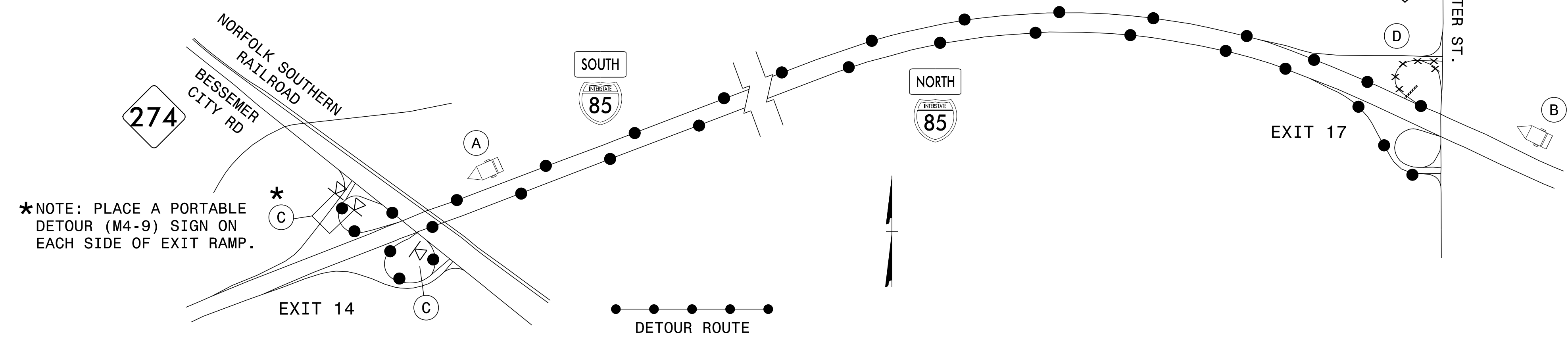


**DETOUR 5: CLOSURE AT I-85 S EXIT 17
EXIT LOOP TO US 321 (CHESTER ST)**



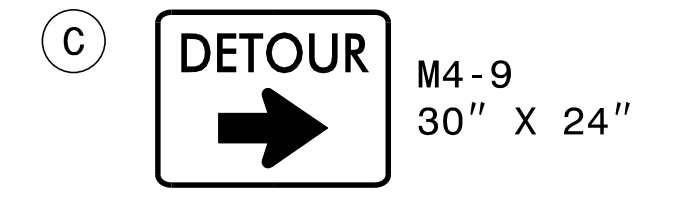
*NOTE: PLACE A PORTABLE
DETOUR (M4-9) SIGN ON
EACH SIDE OF EXIT RAMP.

(A)

MESSAGE NO. 1	MESSAGE NO. 2
US 321 DETOUR EXIT 14	

CHANGEABLE MESSAGE SIGN

MIN. 1500 FT IN ADVANCE OF
EXIT 14 DECELERATION LANE
OR AS DIRECTED BY ENGINEER

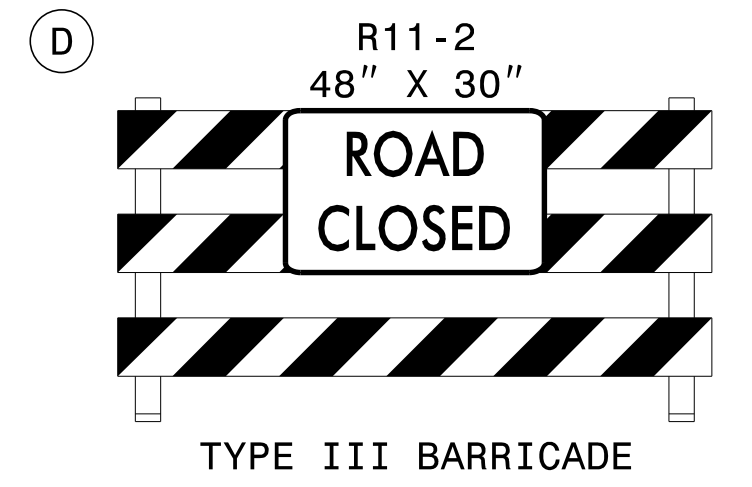


(B)

MESSAGE NO. 1	MESSAGE NO. 2
EXIT 17 US 321 CLOSED	DETOUR TO EXIT 14

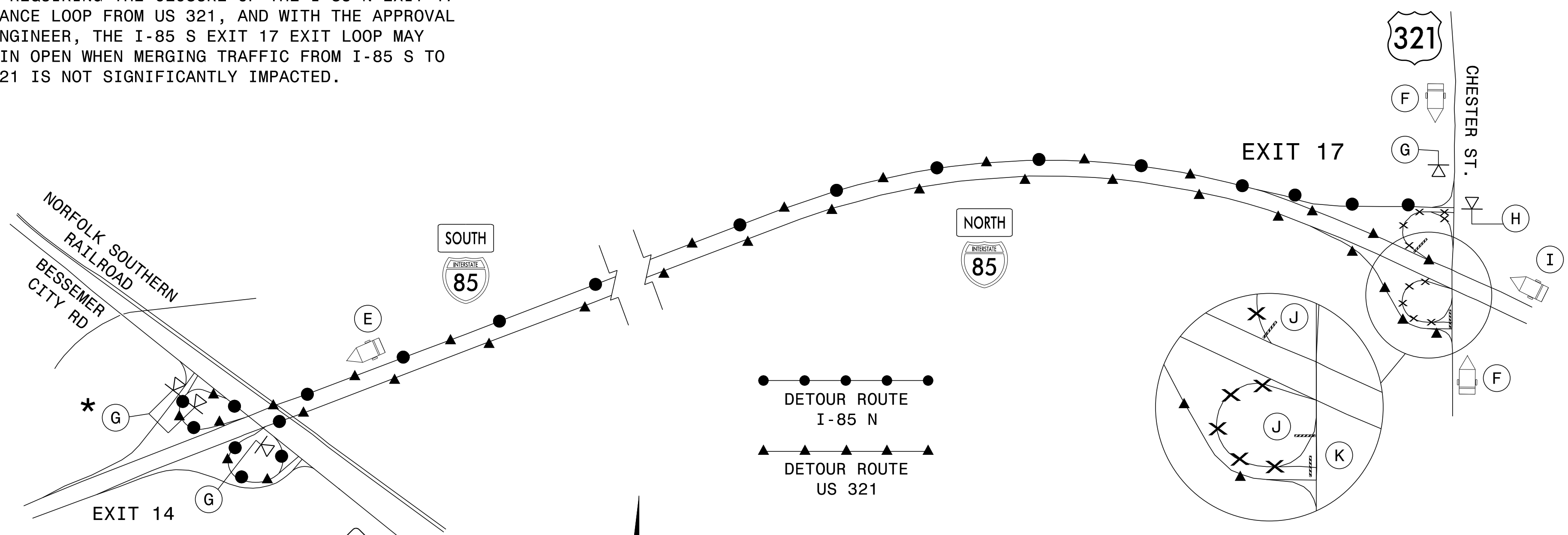
CHANGEABLE MESSAGE SIGN

MIN. 1/2 MILE IN ADVANCE OF
EXIT 17 DECELERATION LANE
OR AS DIRECTED BY ENGINEER



**DETOUR 6: CLOSURE AT I-85 N EXIT 17
ENTRANCE LOOP FROM US 321 (CHESTER ST)
INCLUDING CLOSURE AT I-85 S EXIT 17
EXIT LOOP TO US 321 (CHESTER ST)**

NOTE: WORK TO BE COMPLETED WITHIN DECELERATION/
ACCELERATION LANE IS EXPECTED TO REQUIRE THE
CLOSURE OF BOTH EXIT 17 LOOPS AS SHOWN. FOR OTHER
WORK REQUIRING THE CLOSURE OF THE I-85 N EXIT 17
ENTRANCE LOOP FROM US 321, AND WITH THE APPROVAL
OF ENGINEER, THE I-85 S EXIT 17 EXIT LOOP MAY
REMAIN OPEN WHEN MERGING TRAFFIC FROM I-85 S TO
US 321 IS NOT SIGNIFICANTLY IMPACTED.



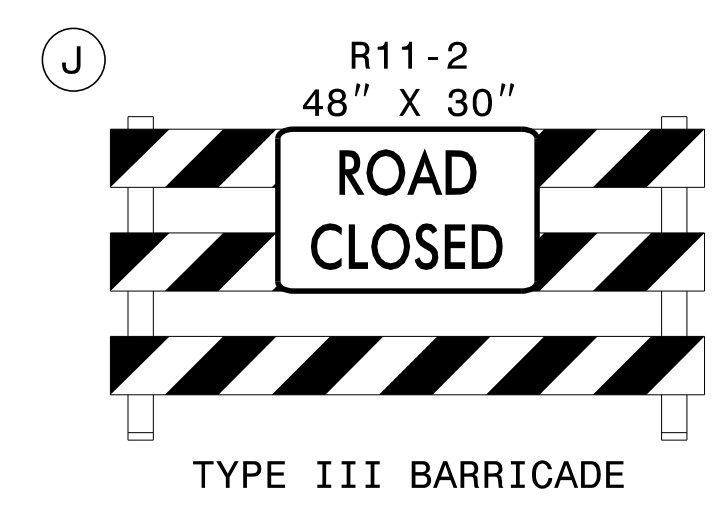
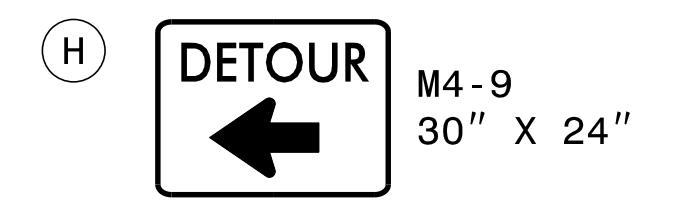
* NOTE: PLACE A PORTABLE
DETOUR (M4-9) SIGN ON
EACH SIDE OF EXIT RAMP.

(E)

MESSAGE NO. 1	MESSAGE NO. 2
I-85 N US 321 DETOURS	THIS EXIT EXIT 14

CHANGEABLE MESSAGE SIGN

MIN. 1500 FT IN ADVANCE OF
EXIT 14 DECELERATION LANE
OR AS DIRECTED BY ENGINEER



(F)

MESSAGE NO. 1	MESSAGE NO. 2
I-85 N RAMP CLOSED	DETOUR USE I-85 S

CHANGEABLE MESSAGE SIGN

MIN. 350 FT IN ADVANCE OF
I-85 S ENTRANCE RAMP
OR AS DIRECTED BY ENGINEER

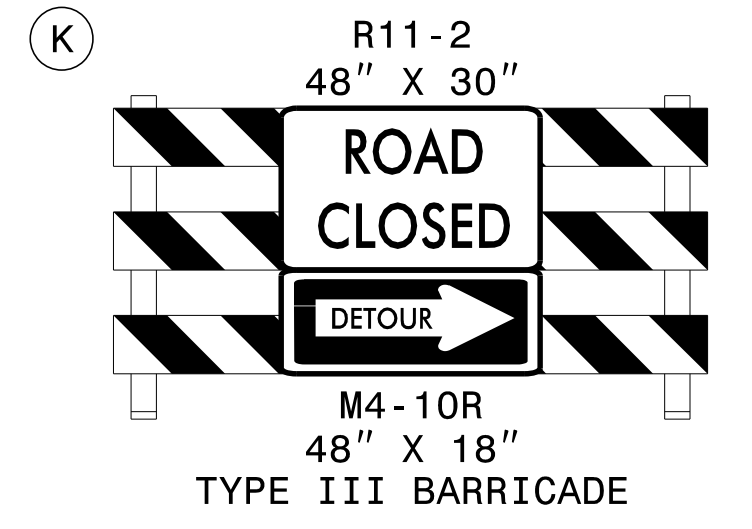
MIN. 350 FT IN ADVANCE OF
I-85 N ENTRANCE RAMP
OR AS DIRECTED BY ENGINEER

(I)

MESSAGE NO. 1	MESSAGE NO. 2
EXIT 17 US 321 CLOSED	DETOUR TO EXIT 14

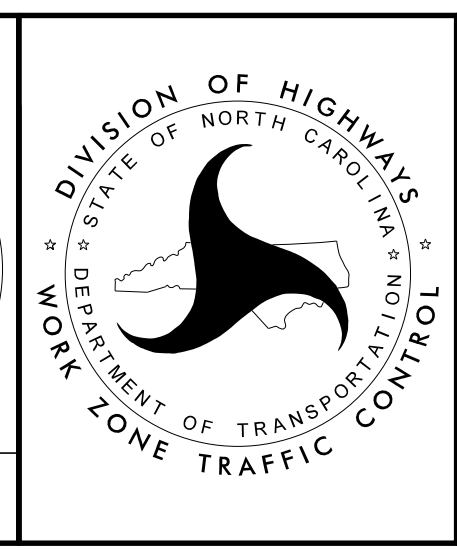
CHANGEABLE MESSAGE SIGN

MIN. 1/2 MILE IN ADVANCE OF
EXIT 17 DECELERATION LANE
OR AS DIRECTED BY ENGINEER



APPROVED: *Lori D. Stoucho*
DATE: 5/20/2016

**DOCUMENT NOT CONSIDERED FINAL
UNLESS ALL SIGNATURES COMPLETED**



I-85 EXIT 17
LOOP DETOURS
5 & 6

5/20/2016 Z:\ProjStore\DivProj\Division2\5893\TrafficControl\CPA\WZTC-Stouchko\Development\I-5893_TC_TMP-03-Exit 17 Detours 5 & 6.dgn User:ldstouchko