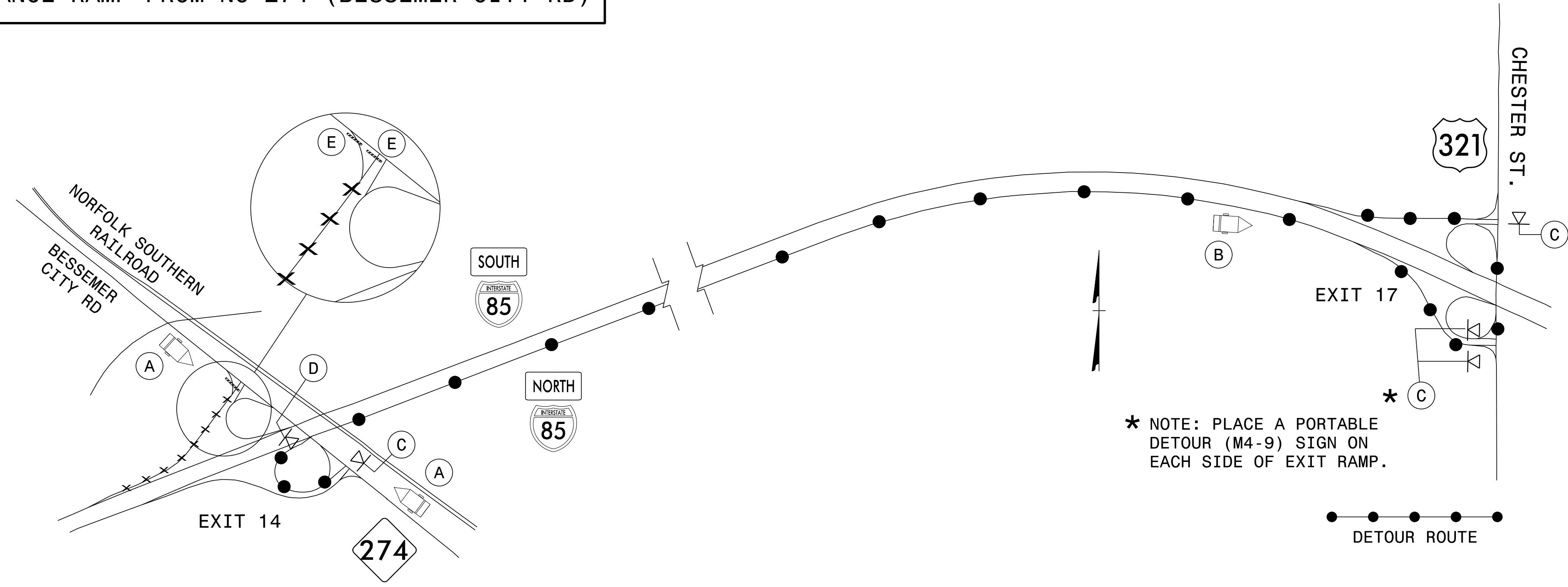


**DETOUR 3: CLOSURE AT I-85 S EXIT 14
ENTRANCE RAMP FROM NC 274 (BESSEMER CITY RD)**



(A)

MESSAGE NO. 1	MESSAGE NO. 2
I-85 S RAMP CLOSED	DETOUR USE I-85 N

CHANGEABLE MESSAGE SIGN

MIN. 350 FT IN ADVANCE OF I-85 S ENTRANCE RAMP OR AS DIRECTED BY ENGINEER

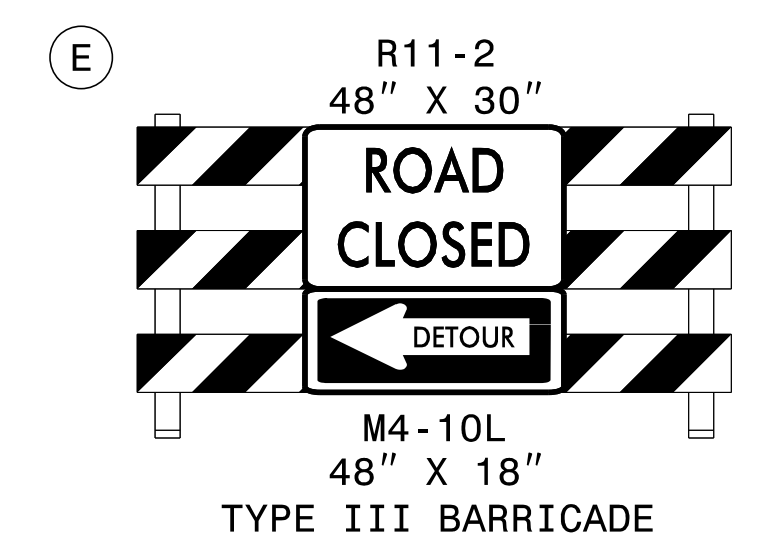
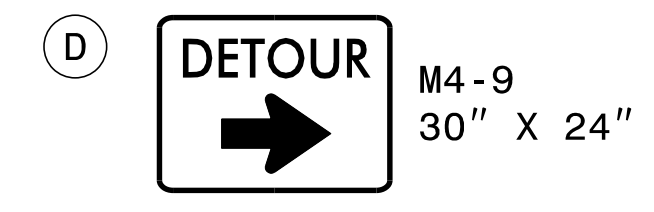
MIN. 350 FT IN ADVANCE OF I-85 N ENTRANCE RAMP OR AS DIRECTED BY ENGINEER

(B)

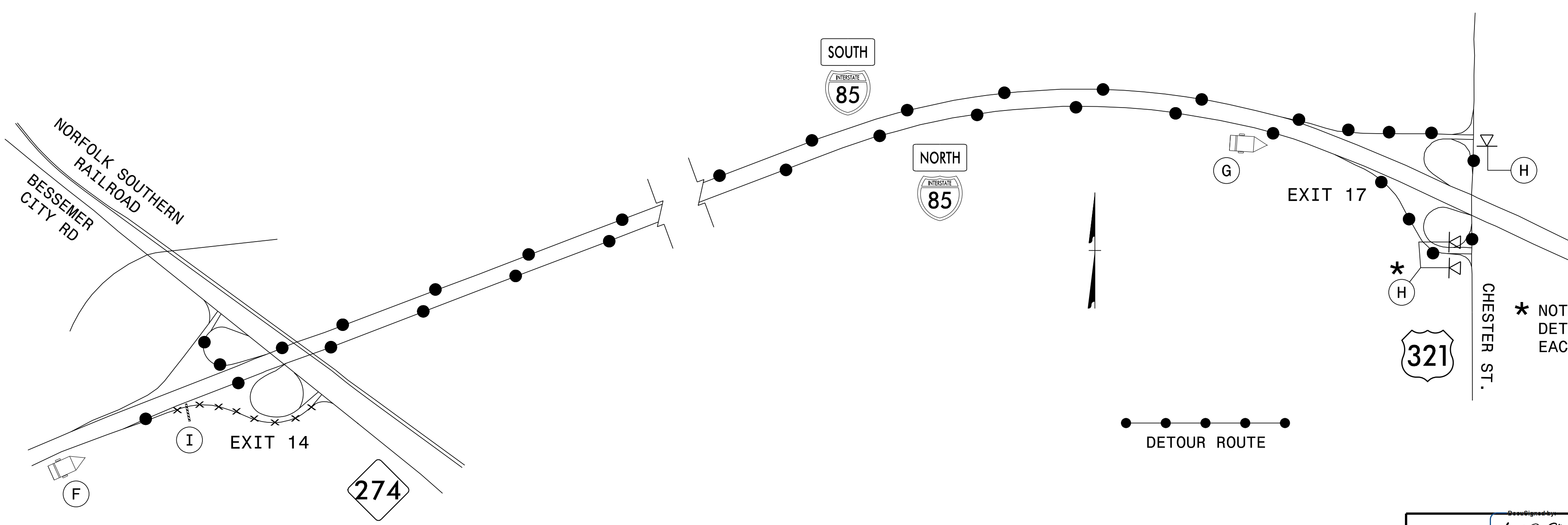
MESSAGE NO. 1	MESSAGE NO. 2
I-85 S DETOUR EXIT 17	

CHANGEABLE MESSAGE SIGN

MIN. 1500 FT IN ADVANCE OF EXIT 17 DECELERATION LANE OR AS DIRECTED BY ENGINEER



**DETOUR 4: CLOSURE AT I-85 N EXIT 14
EXIT RAMP TO NC 274 (BESSEMER CITY RD)**



(F)

MESSAGE NO. 1	MESSAGE NO. 2
EXIT 14 NC 274 CLOSED	DETOUR TO EXIT 17

CHANGEABLE MESSAGE SIGN

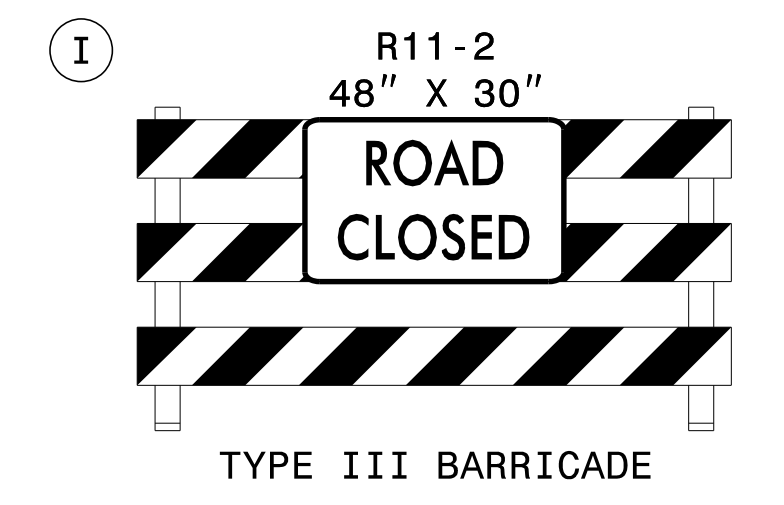
MIN. 1/2 MILE IN ADVANCE OF EXIT 14 DECELERATION LANE OR AS DIRECTED BY ENGINEER

(G)

MESSAGE NO. 1	MESSAGE NO. 2
NC 274 DETOUR EXIT 17	

CHANGEABLE MESSAGE SIGN

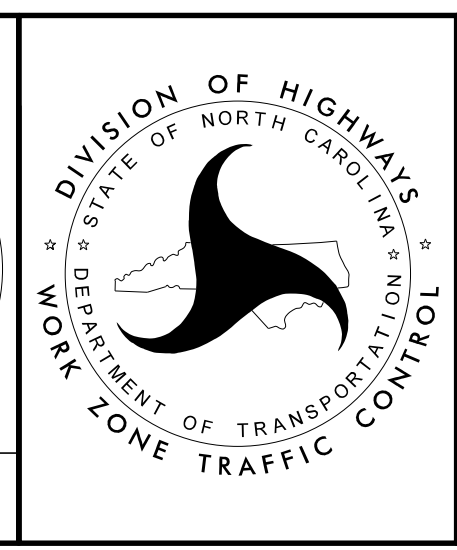
MIN. 1500 FT IN ADVANCE OF EXIT 13 DECELERATION LANE OR AS DIRECTED BY ENGINEER



5/20/2016 Z:\ProjStore\DivProj\Division2\5893\TrafficControl\Development\I-5893_TC_TMP-02-Exit 14 Detours 3 & 4.dgn User:ldstouchko

APPROVED: *Lori D. Stoucho*
DATE: 5/20/2016

**DOCUMENT NOT CONSIDERED FINAL
UNLESS ALL SIGNATURES COMPLETED**



**I-85 EXIT 14
RAMP DETOURS
3 & 4**