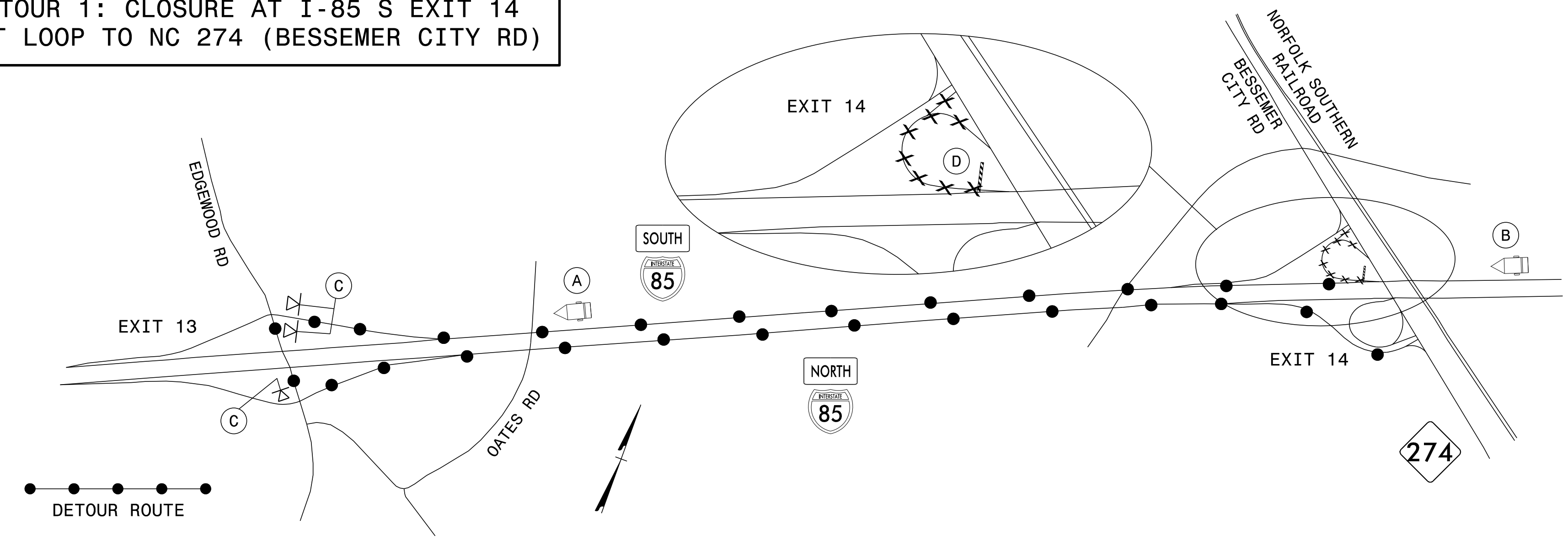


**DETOUR 1: CLOSURE AT I-85 S EXIT 14  
EXIT LOOP TO NC 274 (BESSEMER CITY RD)**



(A)

MESSAGE NO. 1	MESSAGE NO. 2
NC 274 DETOUR EXIT 13	

CHANGEABLE MESSAGE SIGN

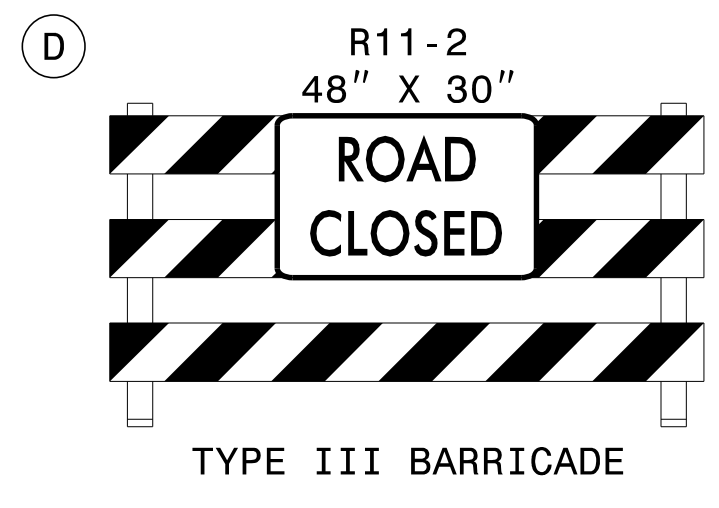
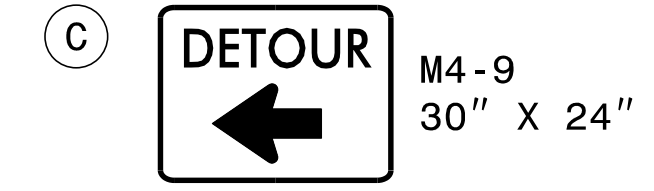
MIN. 1500 FT IN ADVANCE OF  
EXIT 13 DECELERATION LANE  
OR AS DIRECTED BY ENGINEER

(B)

MESSAGE NO. 1	MESSAGE NO. 2
EXIT 14 NC 274 CLOSED	DETOUR TO EXIT 13

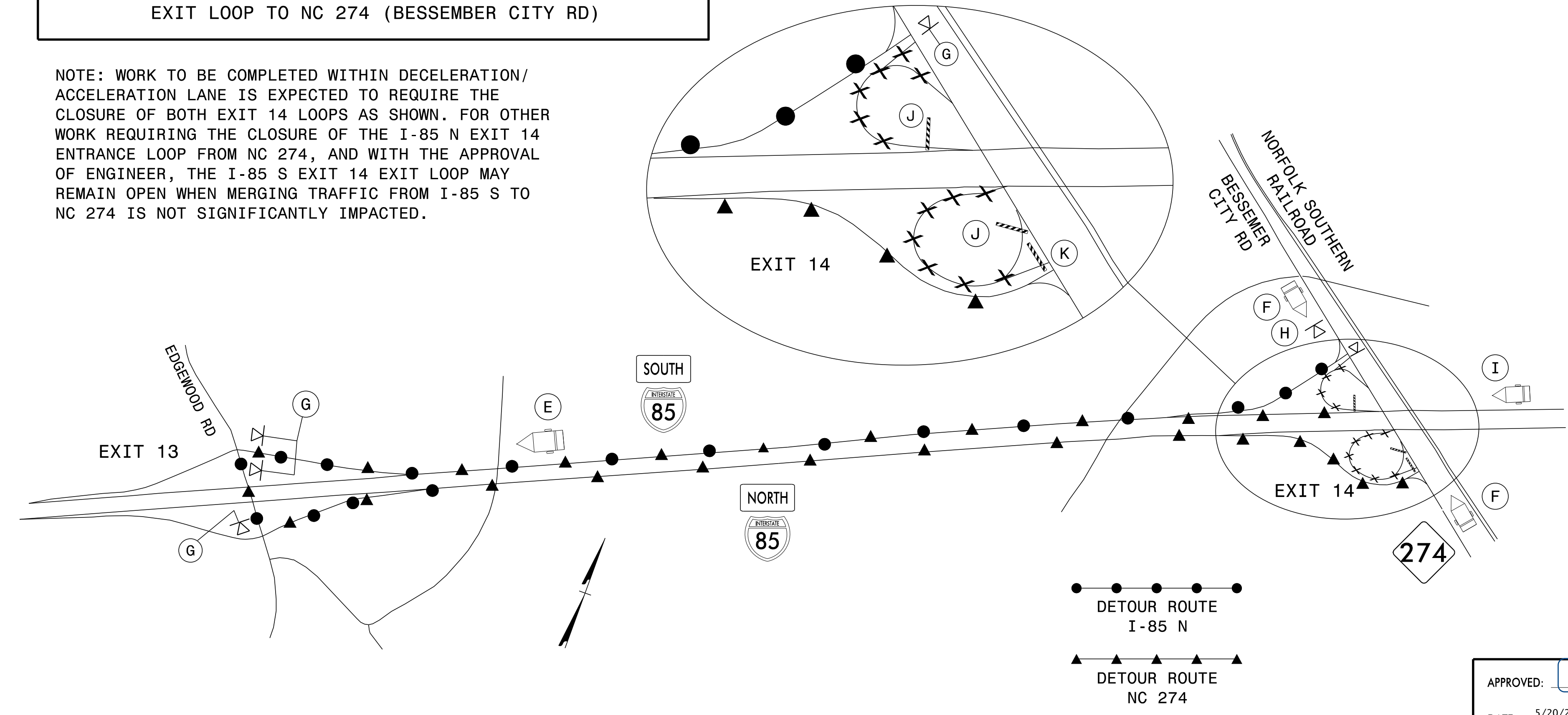
CHANGEABLE MESSAGE SIGN

MIN. 1/2 MILE IN ADVANCE OF  
EXIT 14 DECELERATION LANE  
OR AS DIRECTED BY ENGINEER



**DETOUR 2: CLOSURE AT I-85 N EXIT 14  
ENTRANCE LOOP FROM NC 274 (BESSEMER CITY RD)  
INCLUDING CLOSURE AT I-85 S EXIT 14  
EXIT LOOP TO NC 274 (BESSEMER CITY RD)**

NOTE: WORK TO BE COMPLETED WITHIN DECELERATION/  
ACCELERATION LANE IS EXPECTED TO REQUIRE THE  
CLOSURE OF BOTH EXIT 14 LOOPS AS SHOWN. FOR OTHER  
WORK REQUIRING THE CLOSURE OF THE I-85 N EXIT 14  
ENTRANCE LOOP FROM NC 274, AND WITH THE APPROVAL  
OF ENGINEER, THE I-85 S EXIT 14 EXIT LOOP MAY  
REMAIN OPEN WHEN MERGING TRAFFIC FROM I-85 S TO  
NC 274 IS NOT SIGNIFICANTLY IMPACTED.



(E)

MESSAGE NO. 1	MESSAGE NO. 2
I-85 N NC 274 DETOUR	THIS EXIT EXIT 13

CHANGEABLE MESSAGE SIGN

MIN. 1500 FT IN ADVANCE OF  
EXIT 13 DECELERATION LANE  
OR AS DIRECTED BY ENGINEER

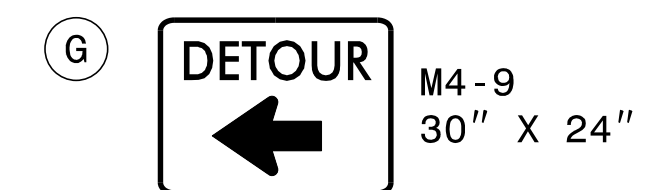
(F)

MESSAGE NO. 1	MESSAGE NO. 2
I-85 N RAMP CLOSED	DETOUR USE I-85 S

CHANGEABLE MESSAGE SIGN

MIN. 350 FT IN ADVANCE OF  
I-85 S ENTRANCE RAMP  
OR AS DIRECTED BY ENGINEER

MIN. 350 FT IN ADVANCE OF  
I-85 N ENTRANCE RAMP  
OR AS DIRECTED BY ENGINEER

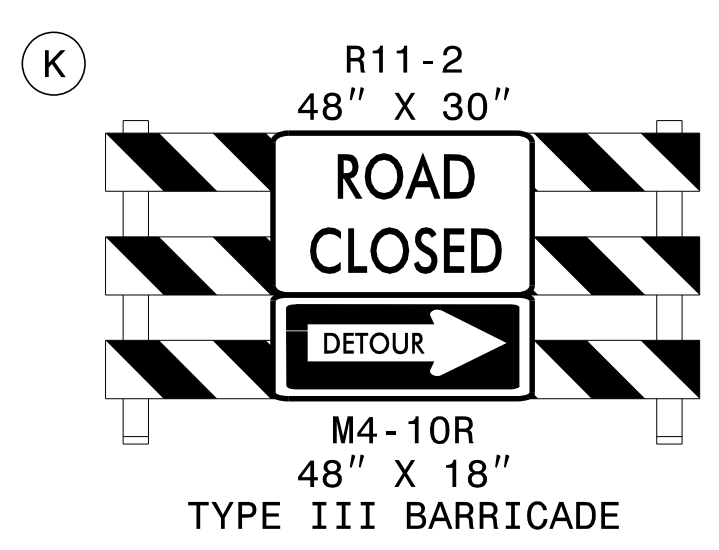
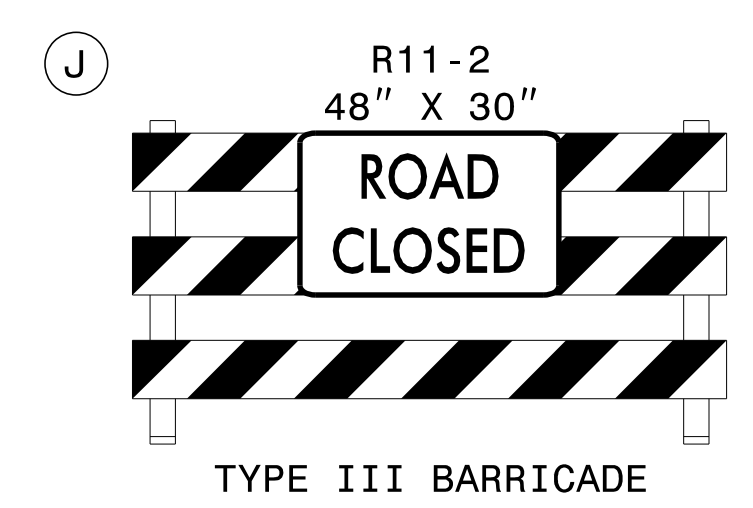


(I)

MESSAGE NO. 1	MESSAGE NO. 2
EXIT 14 NC 274 CLOSED	DETOUR TO EXIT 13

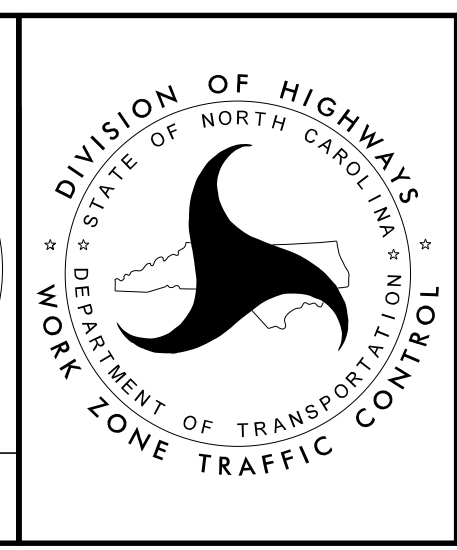
CHANGEABLE MESSAGE SIGN

MIN. 1/2 MILE IN ADVANCE OF  
EXIT 14 DECELERATION LANE  
OR AS DIRECTED BY ENGINEER



APPROVED: *Lori D. Stoucho*  
DATE: 5/20/2016

**DOCUMENT NOT CONSIDERED FINAL  
UNLESS ALL SIGNATURES COMPLETED**



**I-85 EXIT 14  
LOOP DETOURS  
1 & 2**

5/20/2016 Z:\ProjStore\DivProj\Division2\5893\TrafficControl\CPN\WZTC-Stouchko\Development\I-5893\_TC\_TMP-01-Exit 14 Detours 1 & 2.dgn User:ldstouchko