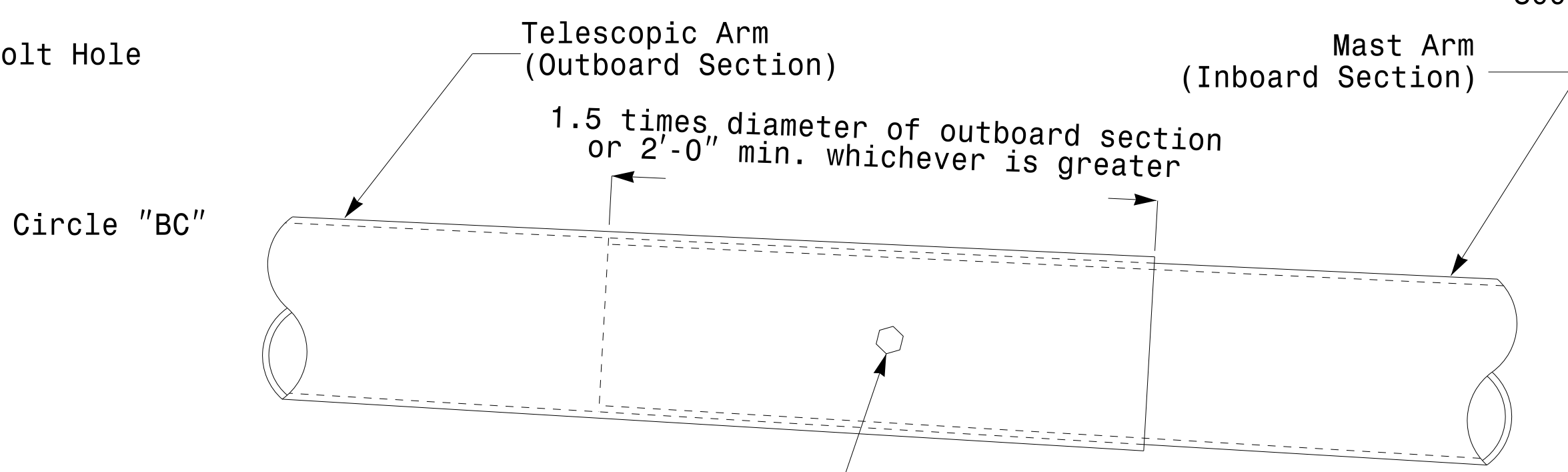
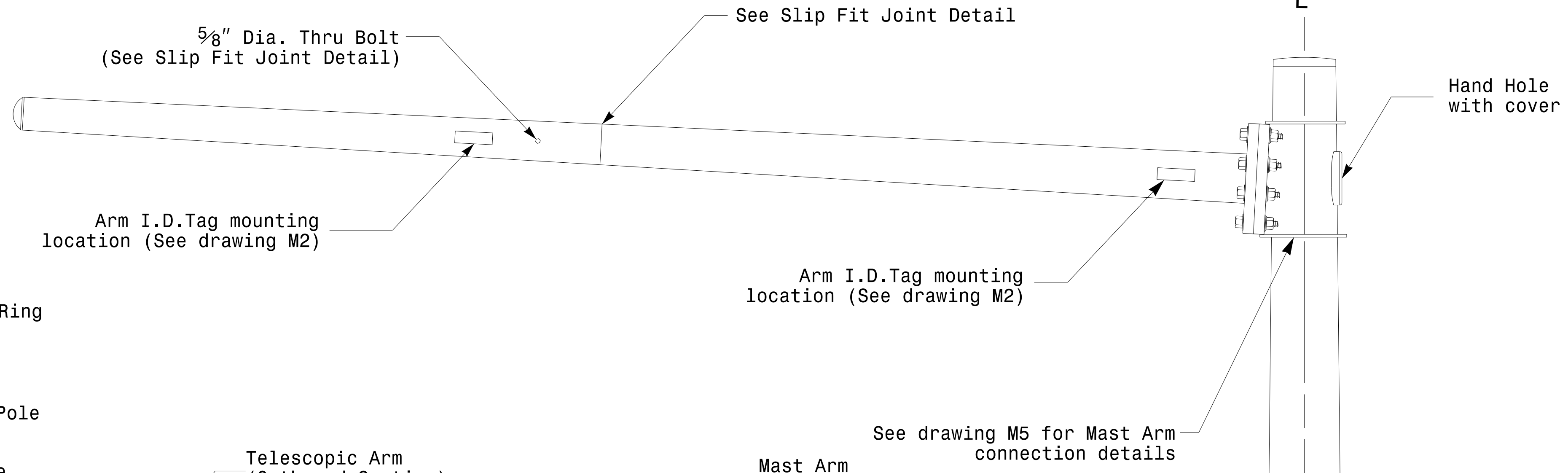
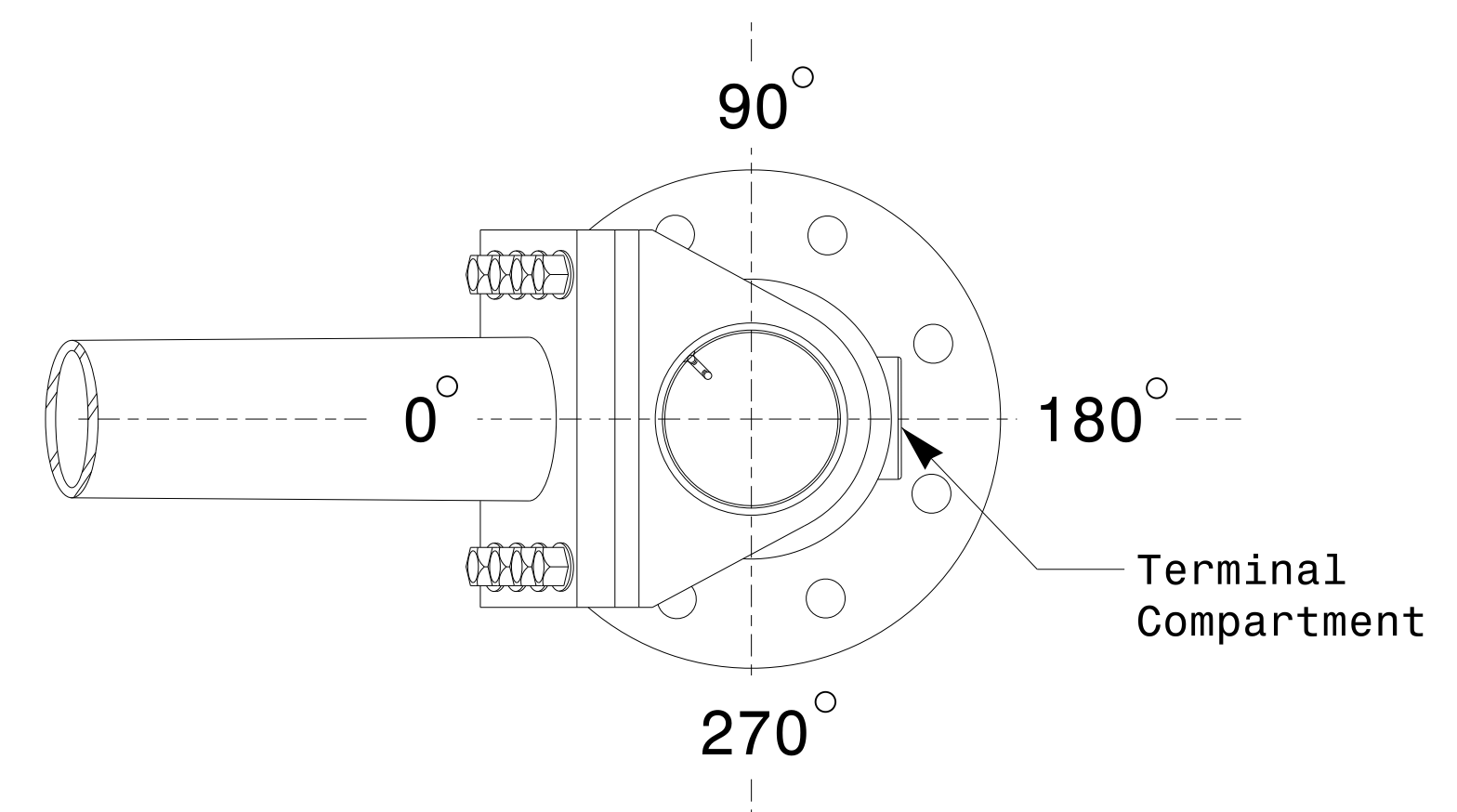


Section A-A  
(See drawing M 2)  
**Pole Base Plate**

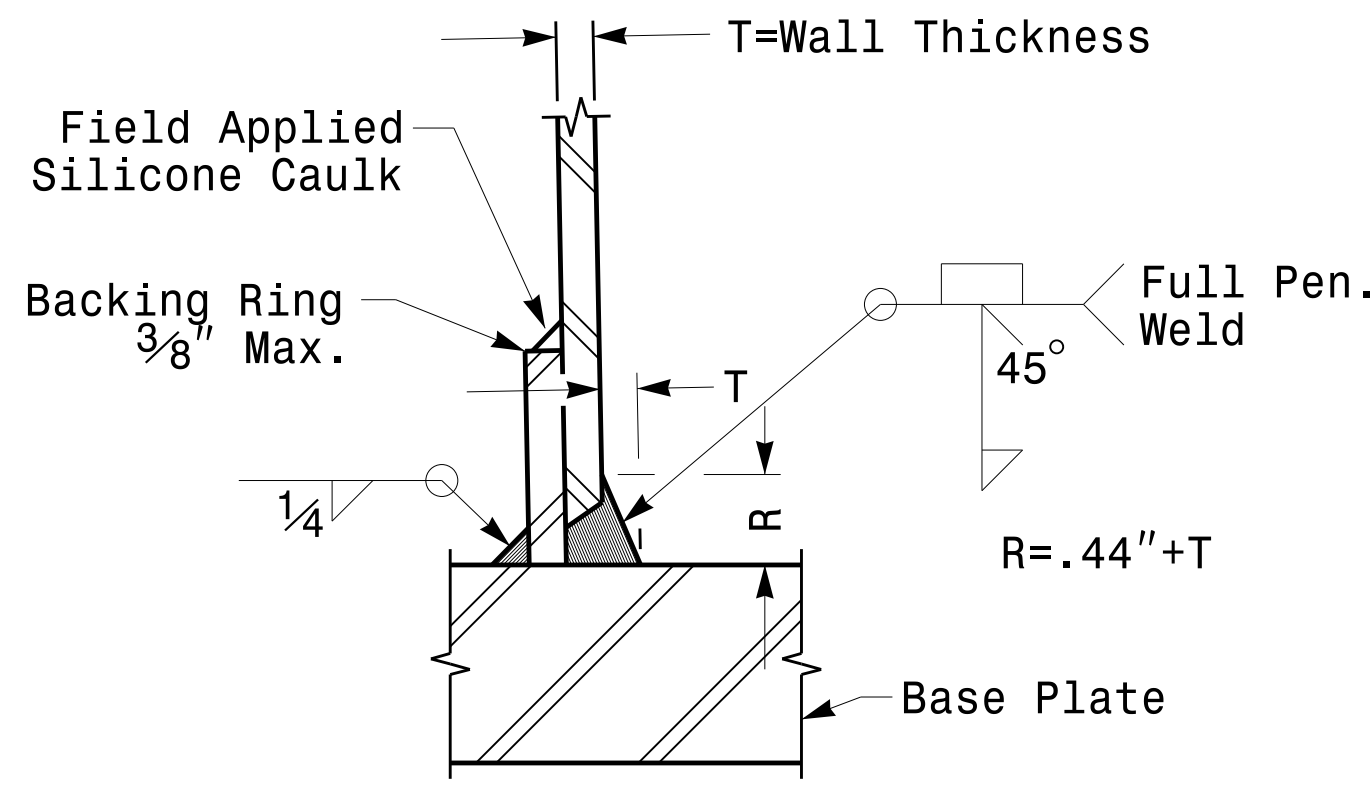


3/4" Factory Drilled Hole in Outboard Tube.  
Field Drill Inboard Tube.  
5/8" Galvanized Thru Stud with  
(2) Hex. Locknuts Each.

**Slip Fit Joint Detail for Mast Arm**



**Mast Arm Radial Orientation**



Section B-B  
(Pole Attachment to Base Plate)  
**Full-Penetration Groove Weld Detail**

Shaft I.D.Tag mounting location (See drawing M2)  
Terminal Compartment (See drawing M2)

Monotube Mast Arm Pole  
(.14in./ft. taper)

	Typical Fabrication Details for Mast Arm Poles		
	PLAN DATE: AUGUST 2013 PREPARED BY: N. BITTING	DESIGNED BY: C.F. ANDREWS REVIEWED BY: D.C. SARKAR	
SCALE: 0 NA NONE	REVISIONS:	INIT. DATE:	SIG. INVENTORY NO.:

26-AUG-2014 08:50  
 C:\Users\sigal\Documents\Signal Design\Section\Eastern Region\MM Sheets\2012\_M4\_Fab\_Details\MastArms.dgn  
 7:00:11 am

**Fabrication Details – Mast Arm Poles**