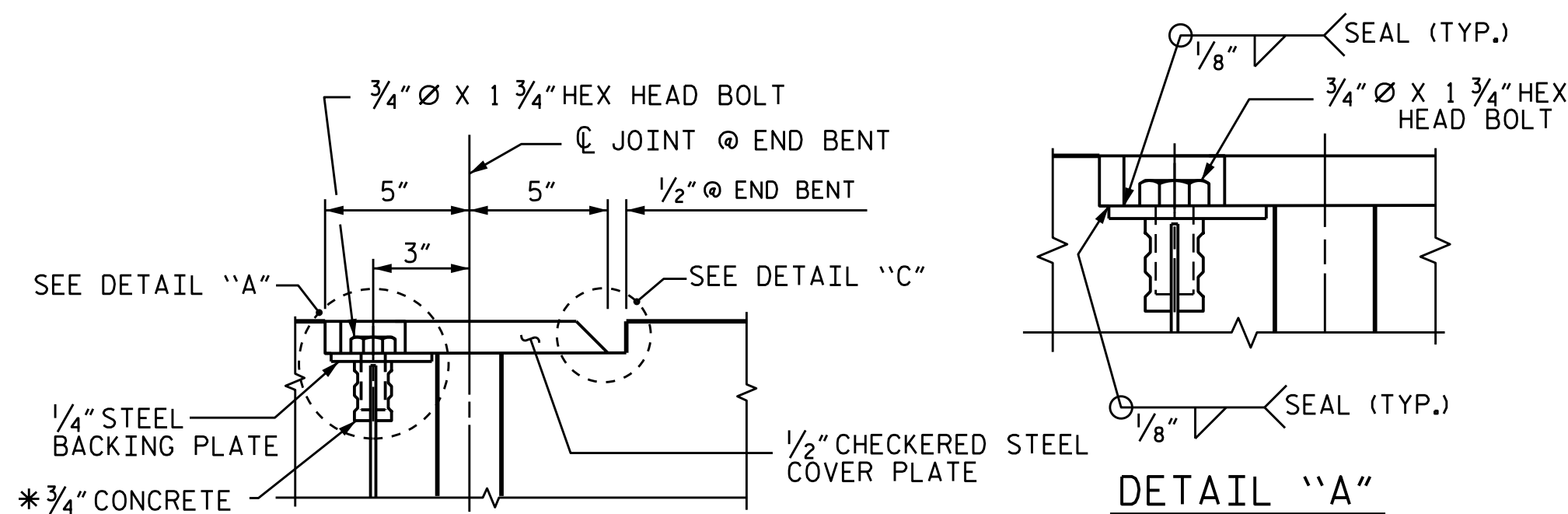
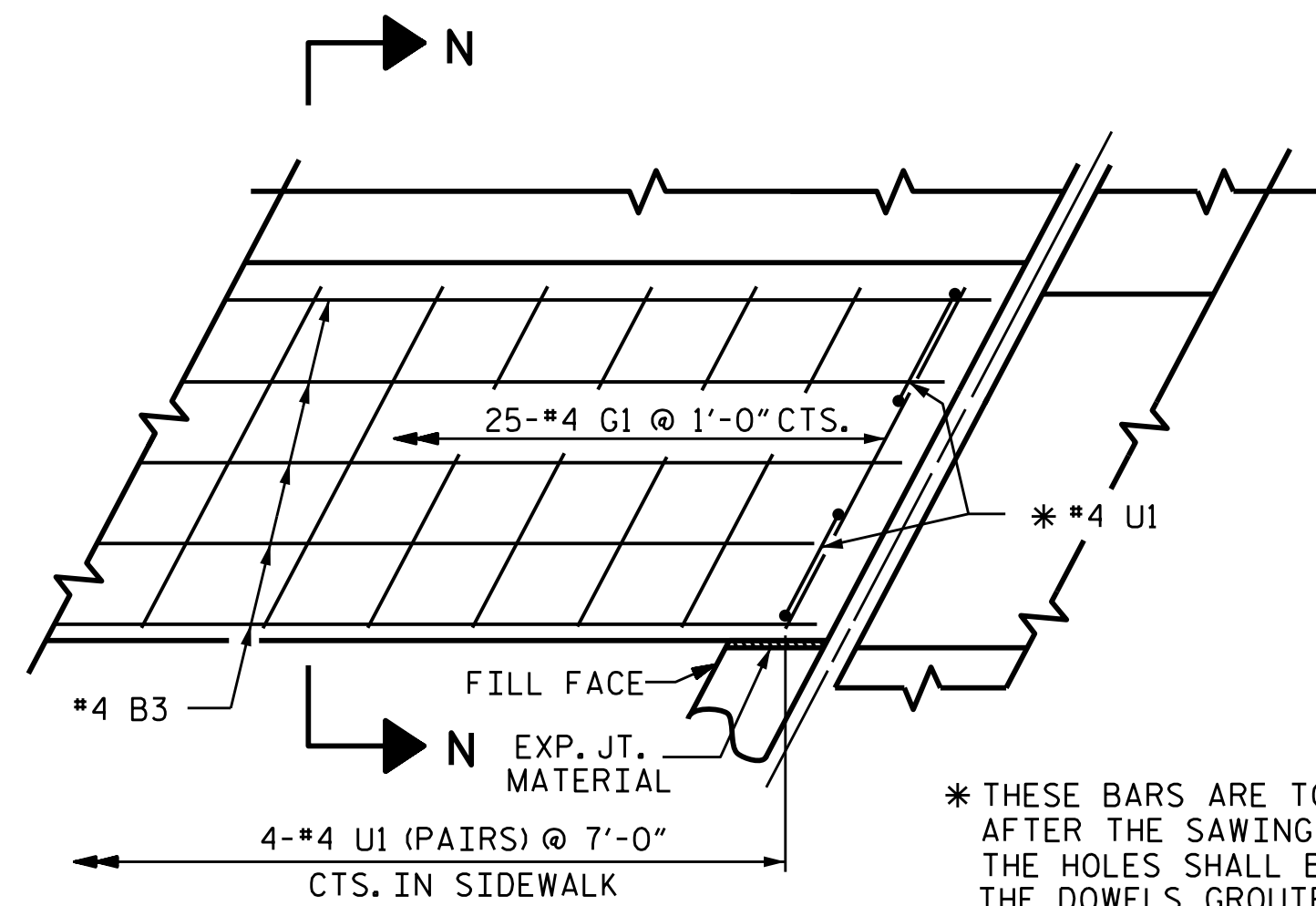


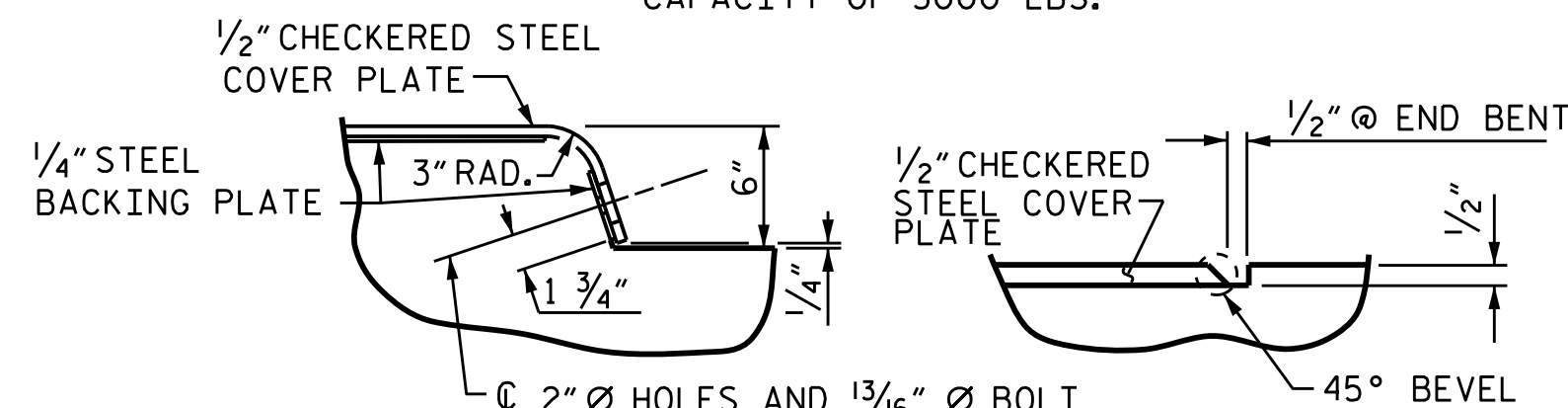
THE STEEL PLATES SHALL CONFORM TO AASHTO M270 GRADE 36 OR APPROVED EQUAL. AFTER FABRICATION, THE PLATES SHALL BE COMMERCIALY BLAST CLEANED AND EITHER COATED WITH A MINIMUM THICKNESS OF 4 MILS (DRY) OF ZINC-RICH PAINT, GALVANIZED OR METALLIZED TO A MINIMUM THICKNESS OF 6 MILS IN ACCORDANCE WITH THE STANDARD SPECIFICATIONS. FOR THERMAL SPRAYED COATINGS (METALLIZATION), SEE SPECIAL PROVISIONS.

THE 3/4" DIAMETER HEX HEAD BOLTS SHALL CONFORM TO ASTM F593 ALLOY 304 STAINLESS STEEL.

NO SEPARATE PAYMENT WILL BE MADE FOR FURNISHING AND INSTALLING THE COVER PLATE. THE ENTIRE COST OF THIS WORK SHALL BE INCLUDED IN THE LUMP SUM PRICE FOR "FOAM JOINT SEALS".



\* THE 3/4" CONCRETE INSERTS SHALL BE CLOSED-END FERRULES WITH LOOPED WIRE STRUTS ATTACHED TO THEM. THE INSERTS SHALL CONFORM TO AASHTO M169, GRADE 12L14 AND SHALL HAVE A TENSILE WORKING LOAD CAPACITY OF 3000 LBS.



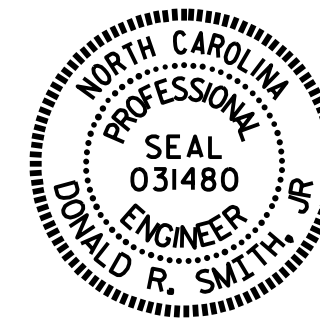
**JOINT SEAL DETAILS @ END BENT**

ELASTOMERIC CONCRETE		
END BENT NO.	ELASTOMERIC CONCRETE * (CU. FT.)	
	STAGE I	STAGE II
1	5.0	9.2
2	5.0	9.2
TOTAL	10.0	18.4

\* BASED ON THE MINIMUM BLOCKOUT SHOWN.

PROJECT NO. U-3308  
DURHAM COUNTY  
STATION: 16+42.70-LALT-

SHEET 3 OF 4



STATE OF NORTH CAROLINA  
DEPARTMENT OF TRANSPORTATION  
RALEIGH  
STANDARD  
BRIDGE APPROACH  
SLAB DETAILS  
STAGE II

ASSEMBLED BY : T. H. CARROLL	DATE : 9/25/14
CHECKED BY : R. P. PATEL	DATE : 10/21/14
DRAWN BY : FCJ 11/88	REV. 10/1/11 MAA/GM
CHECKED BY : ARB 11/88	REV. 7/12 MAA/GM
	REV. 6/13 MAA/GM

DOCUMENT NOT CONSIDERED FINAL UNLESS ALL SIGNATURES COMPLETED

REVISIONS						SHEET NO. S1-46
NO.	BY:	DATE:	NO.	BY:	DATE:	
1			3			TOTAL SHEETS 47
2			4			