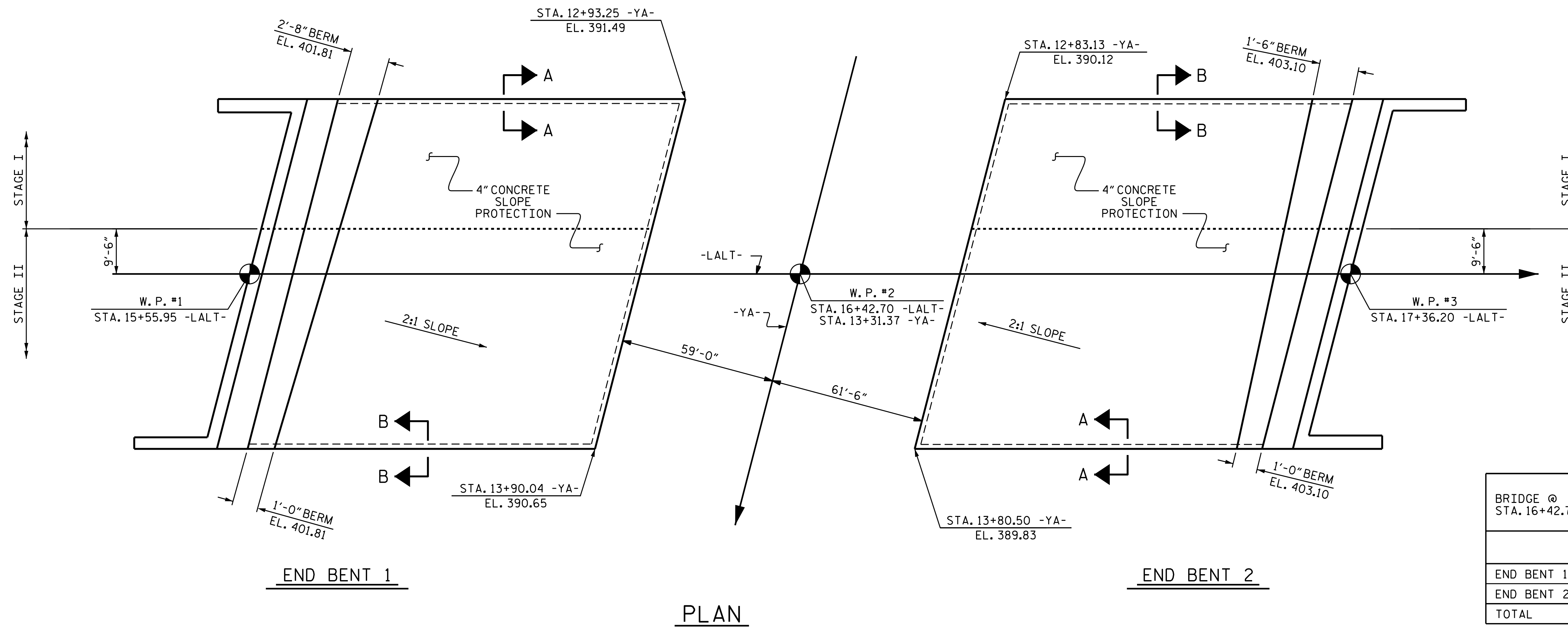


# NOTES

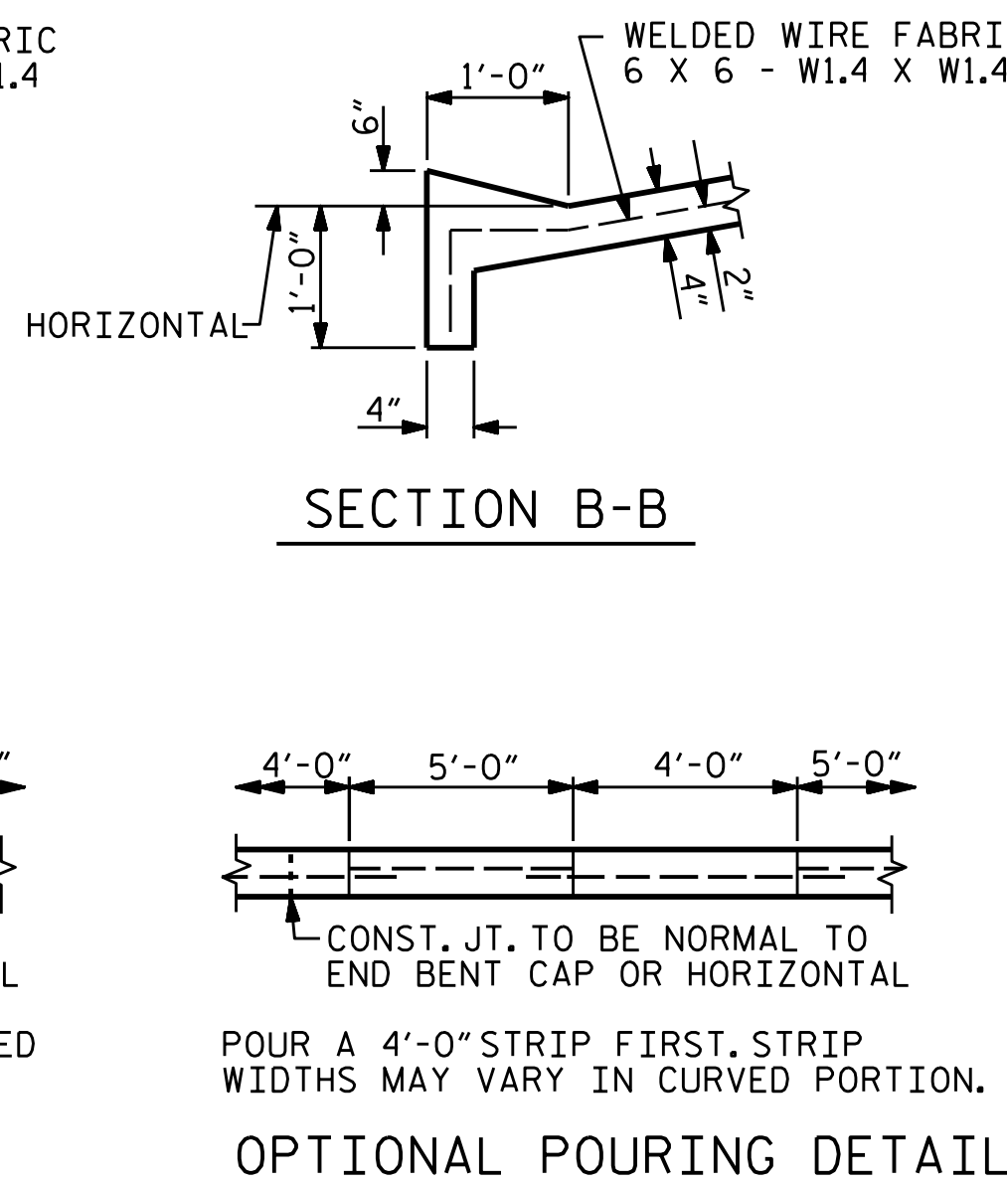
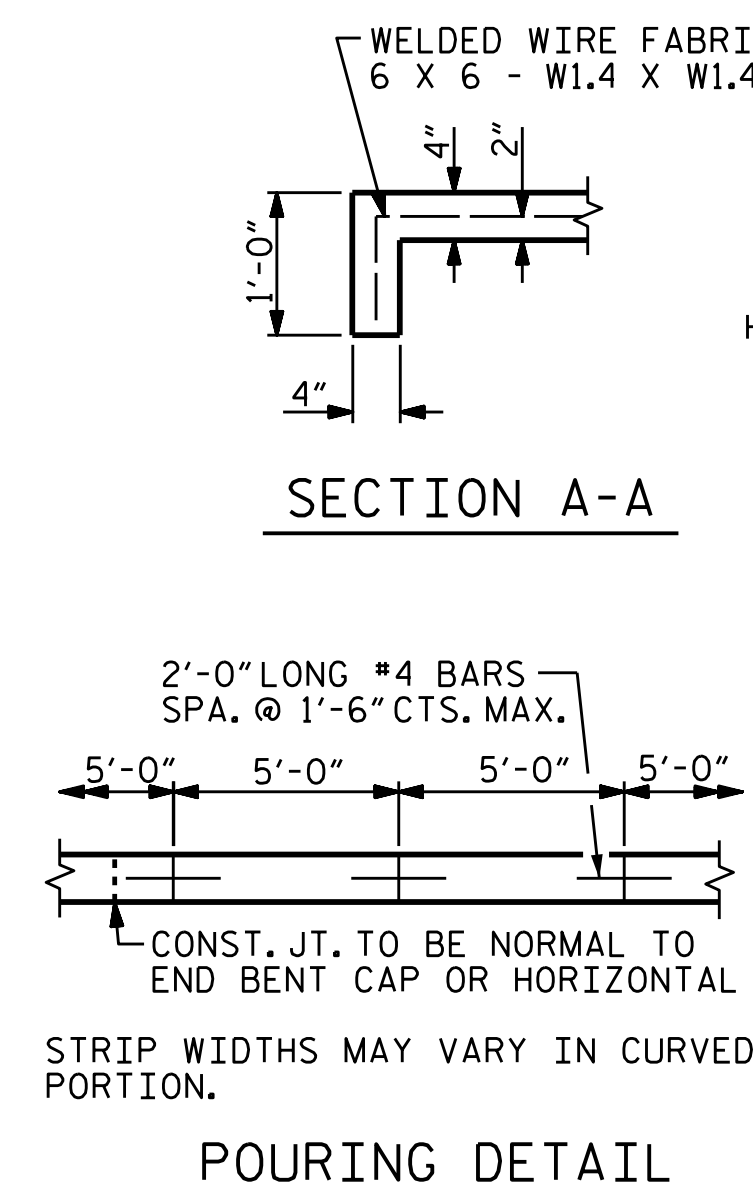
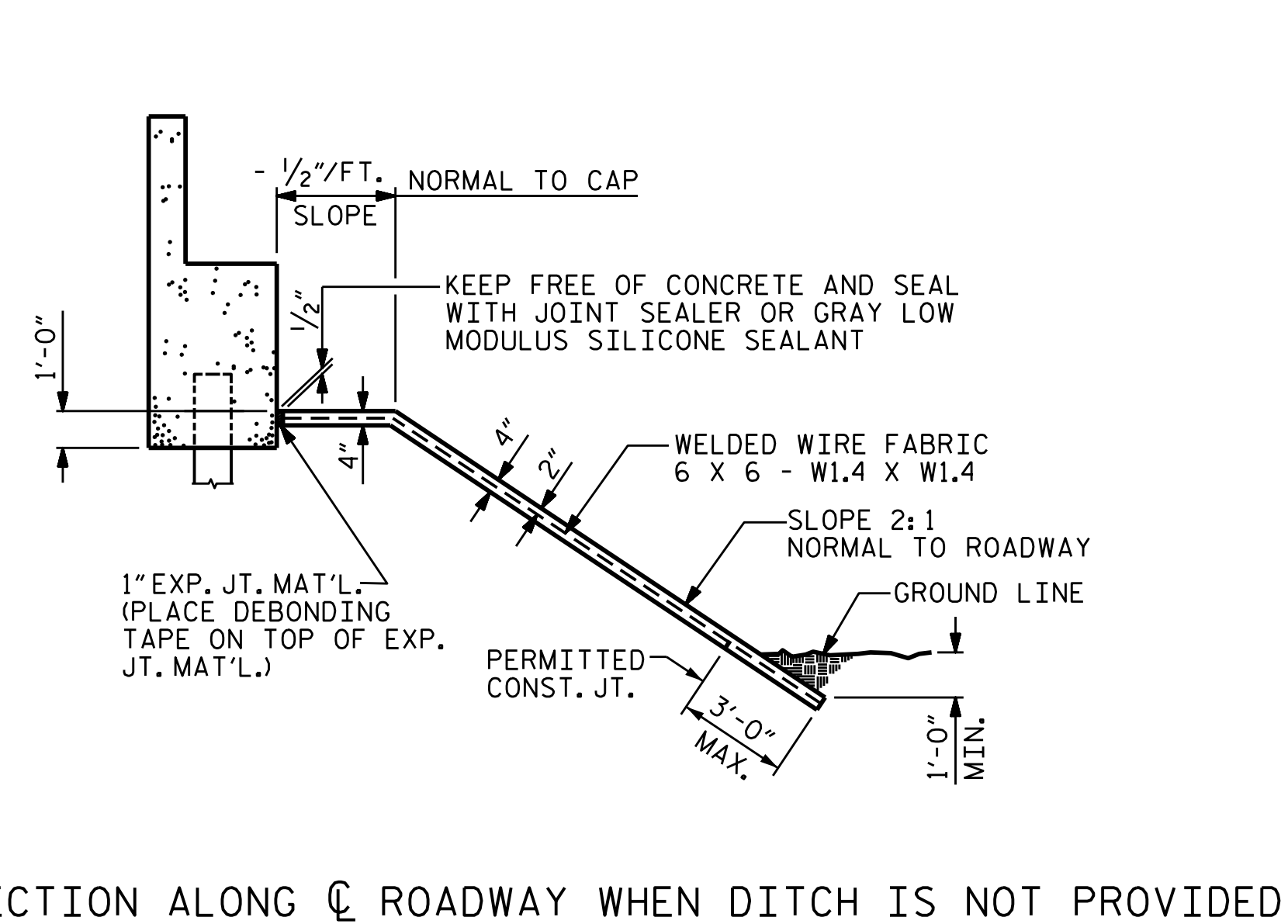
SLOPE PROTECTION SHALL BE PLACED UNDER THE ENDS OF THE BRIDGE AS SHOWN IN THE DETAILS. MEASUREMENT AND PAYMENT SHALL BE AS PRESCRIBED IN SECTION 462 OF THE STANDARD SPECIFICATIONS.

SLOPE PROTECTION SHALL CONSIST OF 4" POURED -IN-PLACE CONCRETE PAVING AS SHOWN IN THE DETAILS ON THIS SHEET. CONCRETE SHALL BE CLASS "B". THE CONCRETE SURFACE SHALL BE FLOATED WITH A WOODEN FLOAT AND FINISHED. WELDED WIRE FABRIC REINFORCING SHALL BE 6 X 6 - W1.4 X W1.4, 60"WIDE. SLOPE PROTECTION SHALL BE POURED IN 5' STRIPS AS SHOWN IN THE "POURING DETAIL" WITH 2'-0" LONG #4 BARS PLACED ALONG THE SLOPE BETWEEN STRIPS AT 1'-6" MAXIMUM SPACING. SLOPE PROTECTION MAY BE POURED IN ALTERNATE 4' AND 5' STRIPS AS SHOWN IN THE "OPTIONAL POURING DETAIL" WITH ADJACENT RUNS OF WELDED WIRE FABRIC LAPPING AT LEAST 6". THE COST OF THE WELDED WIRE FABRIC AND #4 BARS, IF USED, SHALL BE INCLUDED IN THE CONTRACT UNIT PRICE BID PER SQUARE YARD FOR SLOPE PROTECTION.

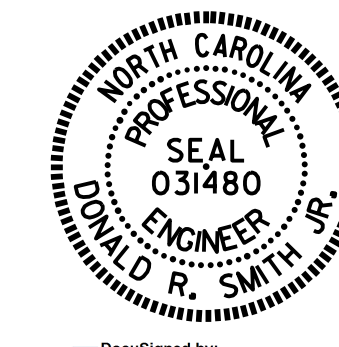


BRIDGE @ STA. 16+42.70 -LALT-	4 INCH SLOPE PROTECTION		* WELDED WIRE FABRIC 60 INCHES WIDE	
	SQUARE YARDS		APPROX. L.F.	
	STAGE I	STAGE II	STAGE I	STAGE II
END BENT 1	100	185	200	370
END BENT 2	115	215	230	430
<b>TOTAL</b>	<b>215</b>	<b>400</b>	<b>430</b>	<b>800</b>

\* QUANTITY SHOWN IS BASED ON 5' POURS.



PROJECT NO. U-3308  
DURHAM COUNTY  
 STATION: 16+42.70-LALT-



STATE OF NORTH CAROLINA DEPARTMENT OF TRANSPORTATION RALEIGH					
STANDARD SLOPE PROTECTION DETAILS					
REVISIONS					
NO.	BY:	DATE:	NO.	BY:	DATE:
1			3		
2			4		

DocuSigned by:  
 Donald R. Smith, Jr.  
 EDC87706174B490  
 4/1/2016

ASSEMBLED BY : T. H. CARROLL	DATE : 12/03/14
CHECKED BY : R. P. PATEL	DATE : 12/08/14
DRAWN BY : ELR 5/92	REV. 5/1/06 TLA/GM
CHECKED BY : GRP 6/92	REV. 10/1/11 MAA/GM
	REV. 12/21/11 MAA/GM

DOCUMENT NOT CONSIDERED  
 FINAL UNLESS ALL  
 SIGNATURES COMPLETED

STR. #1      STD. NO. SP1