

ELEVATION

NOTE: FOR ATTACHMENT OF METAL RAIL TO END POST, SEE STD. NO. BMR2.

NOTES

METAL RAIL SHALL BE INSTALLED IN ACCORDANCE WITH SECTION 460 OF THE STANDARD SPECIFICATIONS AND METAL RAIL COMPONENTS SHALL MEET THE REQUIREMENTS OF ARTICLE 1074-5 OF THE STANDARD SPECIFICATIONS.

RAILING SHALL BE CONTINUOUS FROM END POST TO END POST OF BRIDGE. EACH JOINT IN RAIL LENGTH SHALL BE SPLICED AS DETAILED. PANEL LENGTHS OF RAIL SHALL BE ATTACHED TO A MINIMUM OF THREE POSTS.

FOR END OF RAIL TO CLEAR FACE OF CONCRETE END POST DIMENSION, SEE STD. NO. BMR2.

CAP SCREWS SHALL BE ASTM F593 ALLOY 305 STAINLESS STEEL. WASHERS SHALL MEET THE REQUIREMENTS OF ASTM F844 EXCEPT THEY SHALL BE MADE FROM ALLOY 304 STAINLESS STEEL.

METAL RAIL POSTS SHALL BE SET NORMAL TO CURB GRADE.

ALLOY 6351-T5 MAY BE SUBSTITUTED FOR ALLOY 6061-T6 WHERE APPLICABLE.

MINOR VARIATIONS IN DETAILS OF METAL RAIL WILL BE CONSIDERED. DETAILS OF SUCH VARIATIONS, IF DESIRED, SHALL BE SUBMITTED FOR APPROVAL.

GROOVED CONTRACTION JOINTS, 1/2" IN DEPTH, SHALL BE TOOLED IN ALL EXPOSED FACES OF THE PARAPET AND IN ACCORDANCE WITH ARTICLE 825-10(B) OF THE STANDARD SPECIFICATIONS. CONTRACTION JOINTS SHALL BE LOCATED 9 FEET ON EACH SIDE OF PARAPET EXPANSION JOINTS WITH NO MORE THAN 12 FEET BETWEEN CONTRACTION JOINTS. CONTRACTION JOINTS SHALL BE ALIGNED WITH RAIL POSTS SO AS TO NOT EXTEND THROUGH THE RECESSED PANELS.

ANODIZING

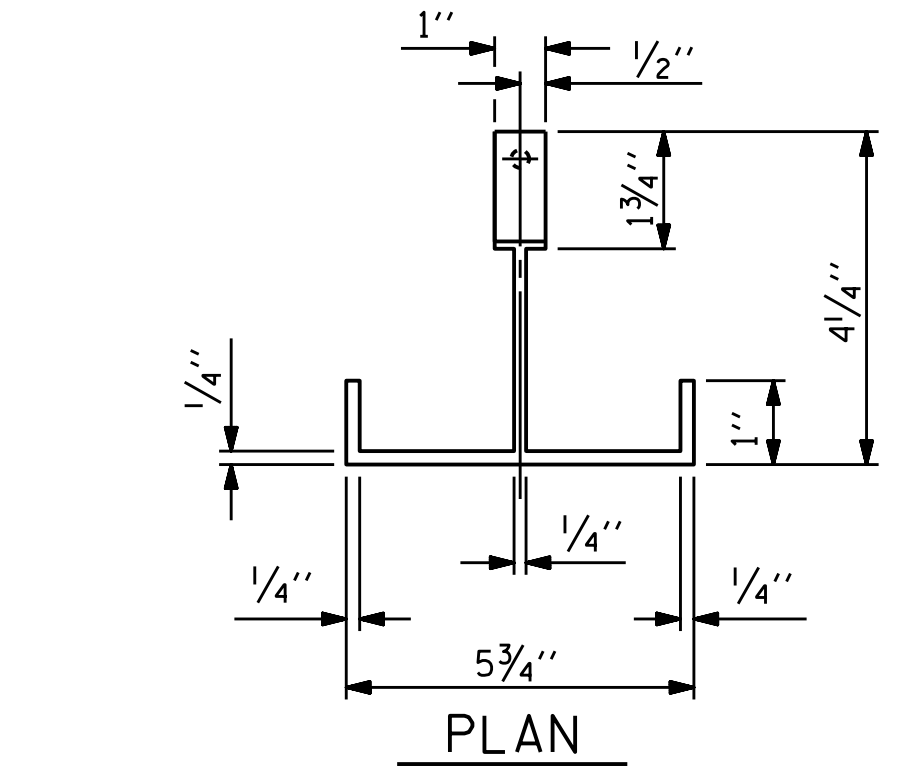
FOR ANODIZED 2 BAR METAL RAIL, SEE SPECIAL PROVISIONS.

ALUMINUM FOR POSTS, BASES, RAILS, EXPANSION BARS, RIVETS, CAPS, AND SHIMS SHALL BE ANODIZED. THE CONTRACTOR SHALL SUBMIT THREE SETS OF ASTM B-21 6061-T6 ALUMINUM SAMPLES ANODIZED MEDIUM BRONZE, DARK BRONZE, AND EXTRA DARK BRONZE TO THE ENGINEER. THE ENGINEER SHALL SELECT THE COLOR FROM THE SAMPLES FURNISHED BY THE CONTRACTOR.

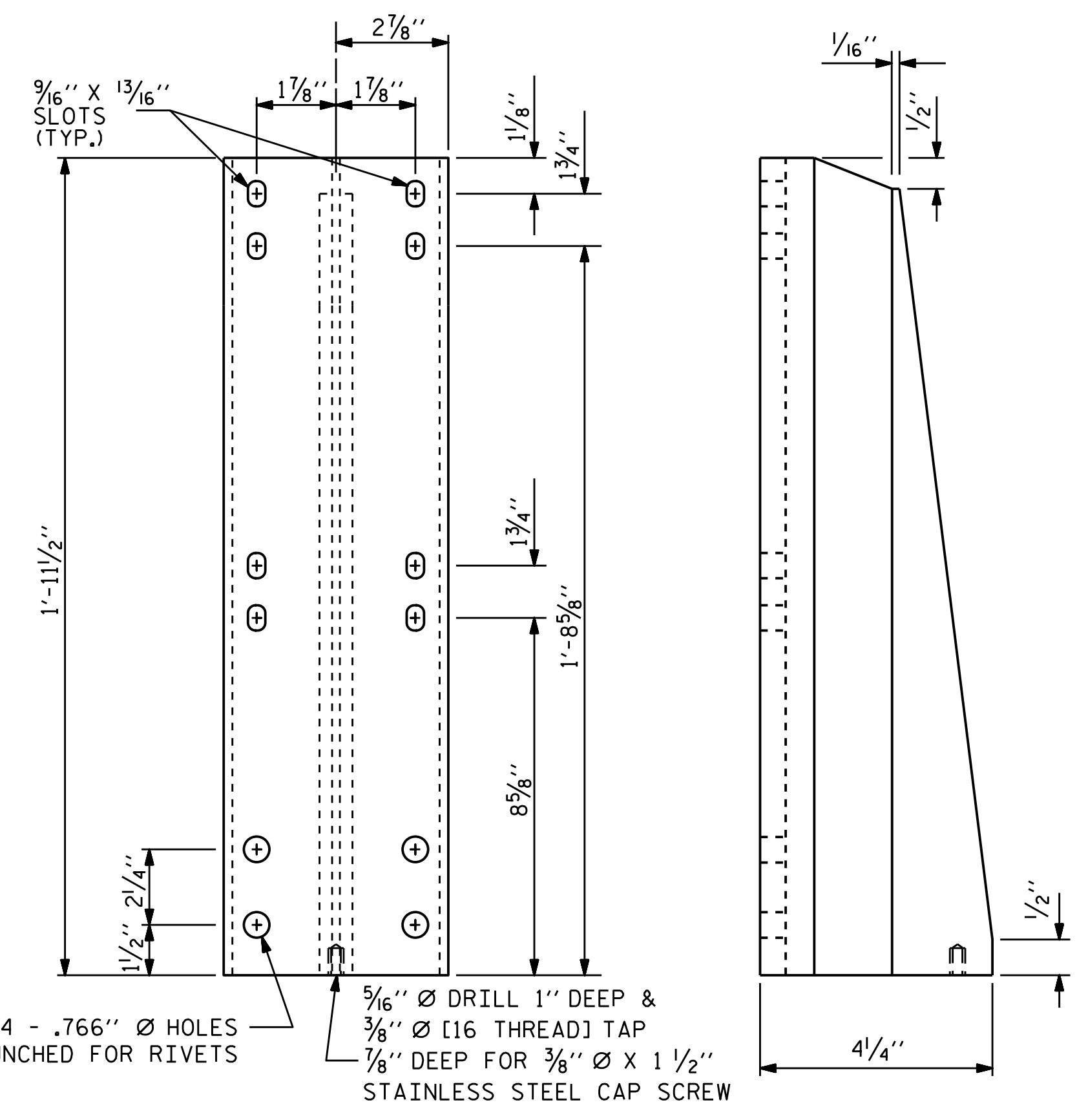
AFTER A SHADE OF BRONZE HAS BEEN SELECTED FOR THE RAILING, THE CONTRACTOR SHALL SUBMIT A SAMPLE OF COMPATIBLE EXTERIOR ACRYLIC HOUSE PAINT TO THE ENGINEER. THIS PAINT SHALL MATCH THE ANODIZED RAIL COLOR AS CLOSELY AS POSSIBLE. AFTER ERECTION OF THE ANODIZED ALUMINUM RAILING, ALL EXPOSED ANCHOR BOLTS, NUTS, WASHERS, MACHINE SCREWS, CAP SCREWS, BOLTS, ATTACHMENT BRACKETS, HOLD-DOWN PLATES, AND BUILT UP ANGLES SHALL BE COATED WITH TWO COATS OF THIS ACRYLIC PAINT.

ANY DAMAGE TO THE ANODIZED SURFACES OF THE RAIL OR COMPONENTS DURING THE CONSTRUCTION SHALL BE REPAIRED ACCORDING TO THE MANUFACTURER'S INSTRUCTIONS AT THE DIRECTION OF THE ENGINEER AND AT THE CONTRACTOR'S EXPENSE.

PAY LENGTH	
STAGE I	170.23 LIN. FT.
STAGE II	170.23 LIN. FT.
TOTAL	340.46 LIN. FT.



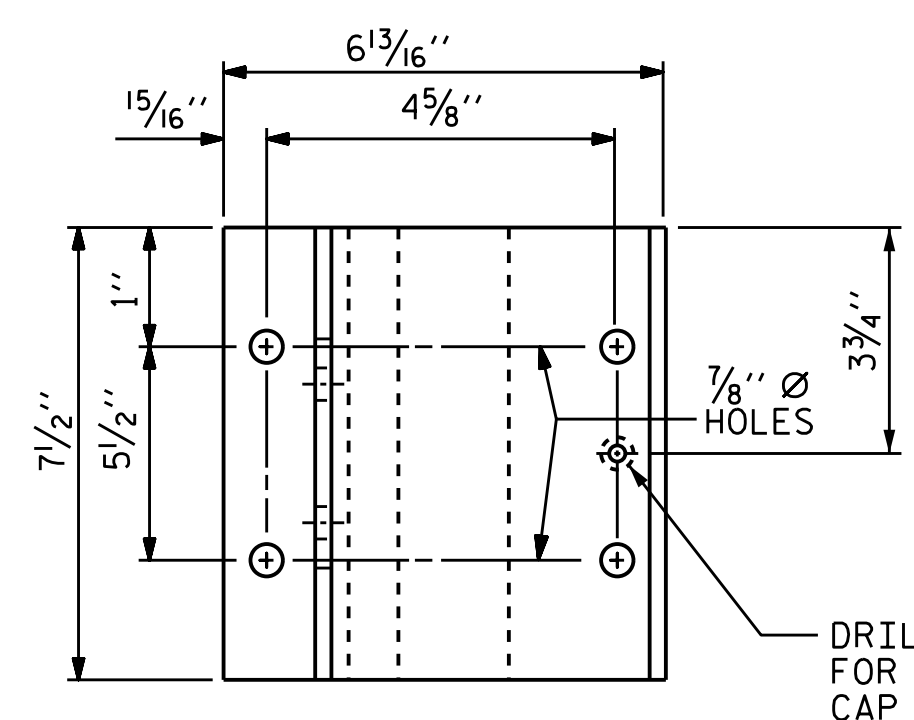
PLAN



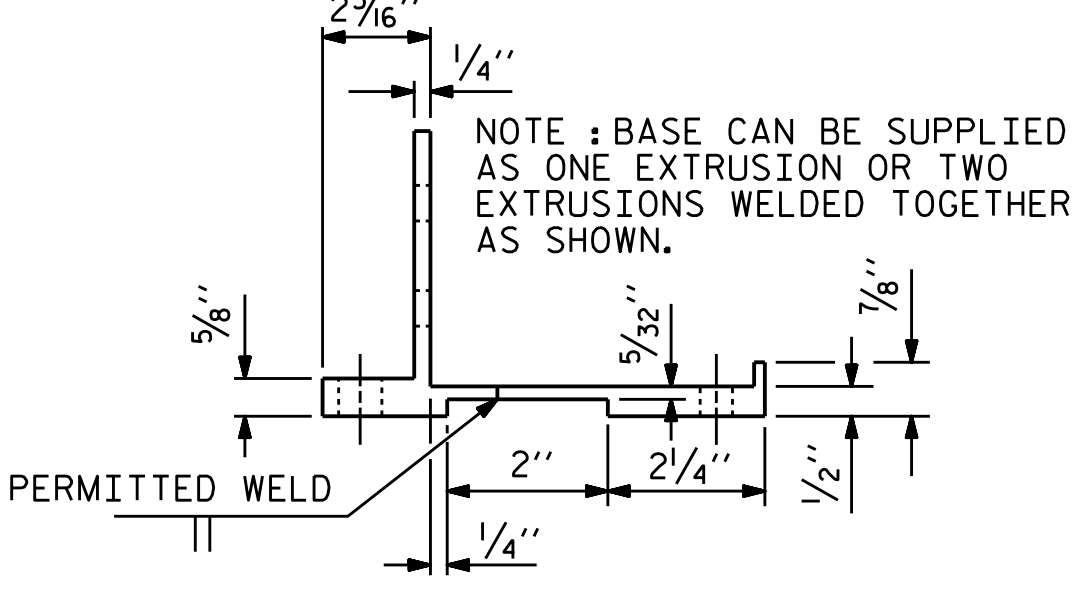
FRONT ELEVATION

SIDE ELEVATION

DETAILS OF POST

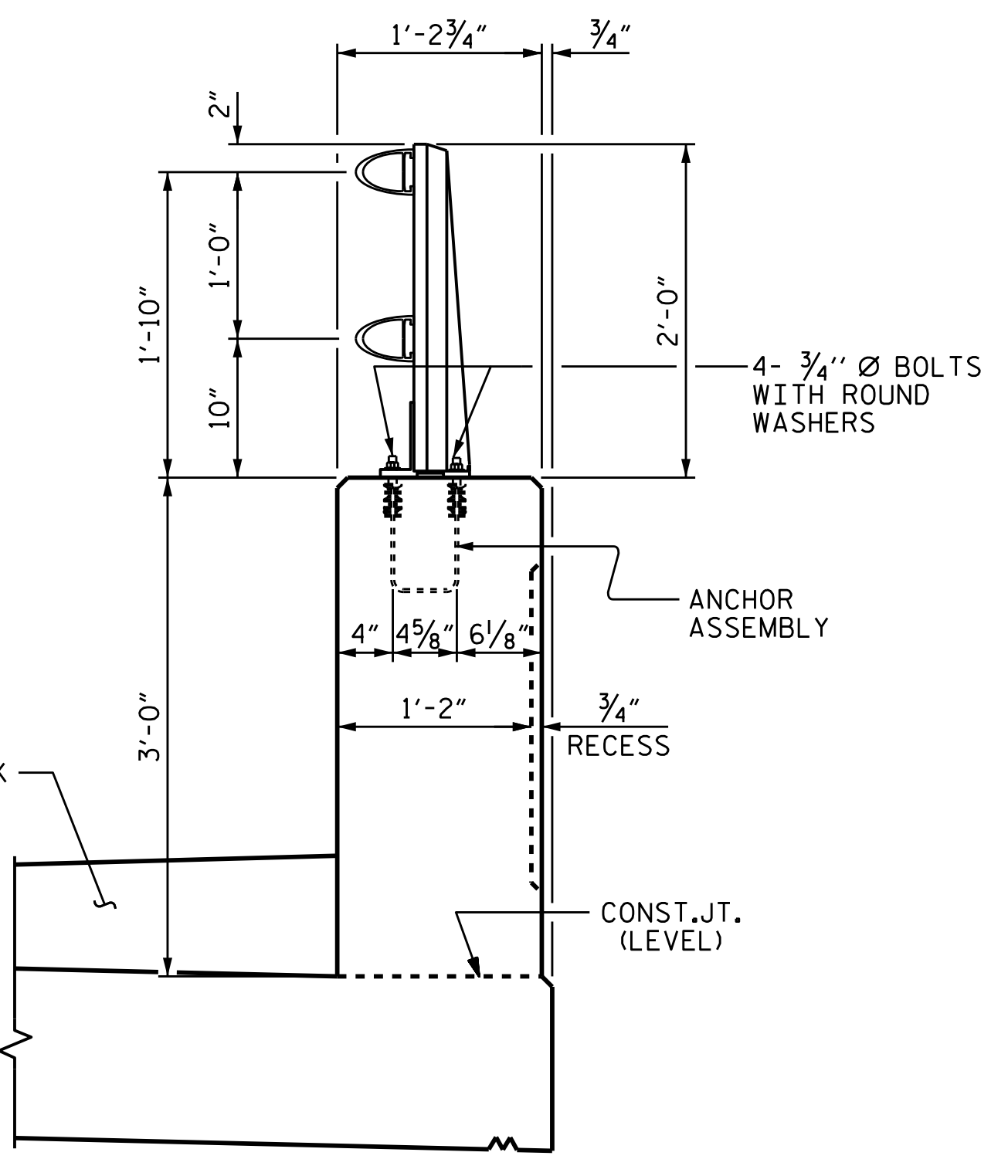


PLAN



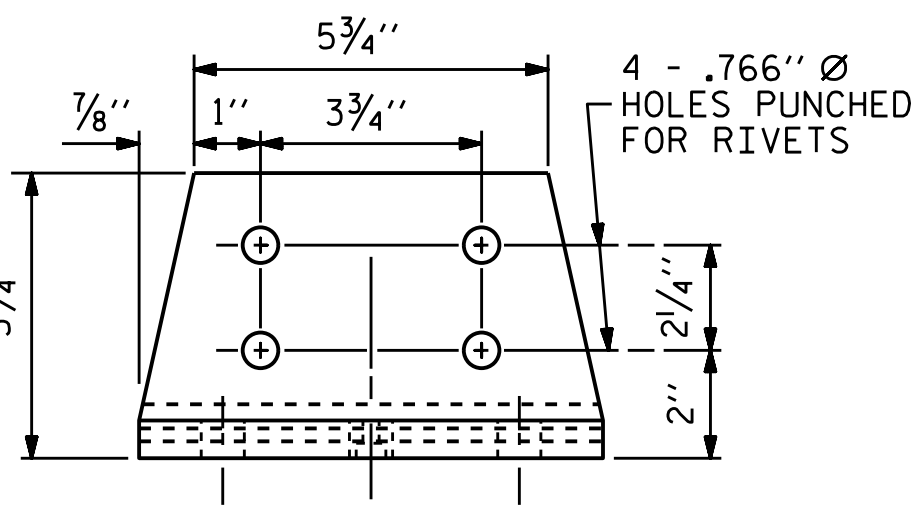
SIDE ELEVATION

POST BASE DETAILS

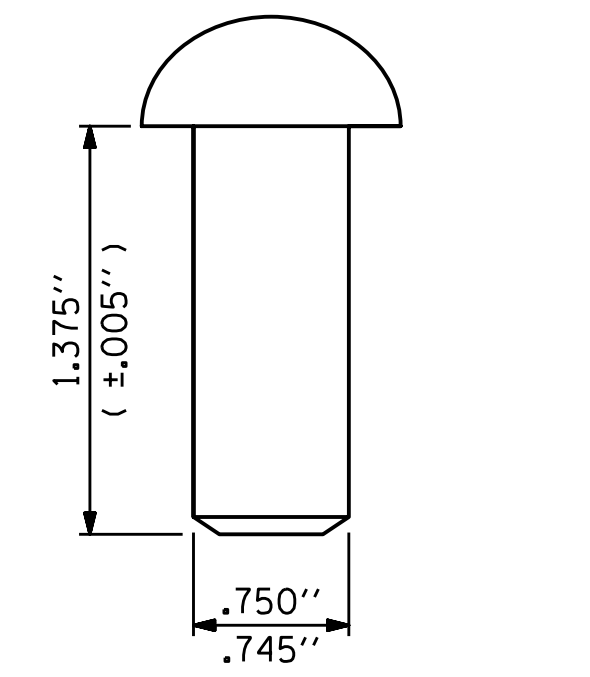


SECTION THROUGH PARAPET AND RAIL

DRILL & COUNTER BORE FOR 3/8" Ø [16 THREAD] CAP SCREW



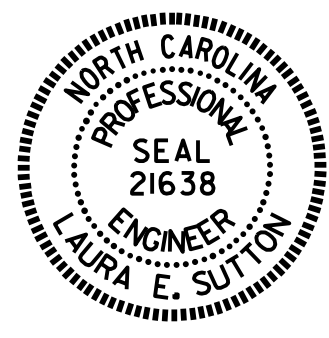
FRONT ELEVATION



RIVET DETAIL

DRAWN BY : P.S. ADKINS DATE : 11/25/13
 CHECKED BY : L.E. SUTTON DATE : 9/10/14

31-MAR-2016 13:14
 R:\Structures\Plans\str1\U3308.ed.2MR.01.dgn
 jdhawk



DocuSigned by:
 Laura E. Sutton
 AE35E8E727640E
 4/1/2016

DOCUMENT NOT CONSIDERED
 FINAL UNLESS ALL
 SIGNATURES COMPLETED

PROJECT NO. U-3308
DURHAM COUNTY
 STATION: 16+42.70-LALT-

SHEET 1 OF 2

STATE OF NORTH CAROLINA
 DEPARTMENT OF TRANSPORTATION
 RALEIGH

SUPERSTRUCTURE

**ANODIZED
 2 BAR METAL RAIL**

REVISIONS						SHEET NO.
NO.	BY:	DATE:	NO.	BY:	DATE:	S1-24
1			3			TOTAL SHEETS
2			4			47

STR. #1