

NSR BRIDGE MP H-56.10
CSXT BRIDGE MP SB-154.61

PROJECT REFERENCE NO. U-3308	SHEET NO. RR-6
RW SHEET NO.	
RAIL DESIGN ENGINEER	HYDRAULICS ENGINEER

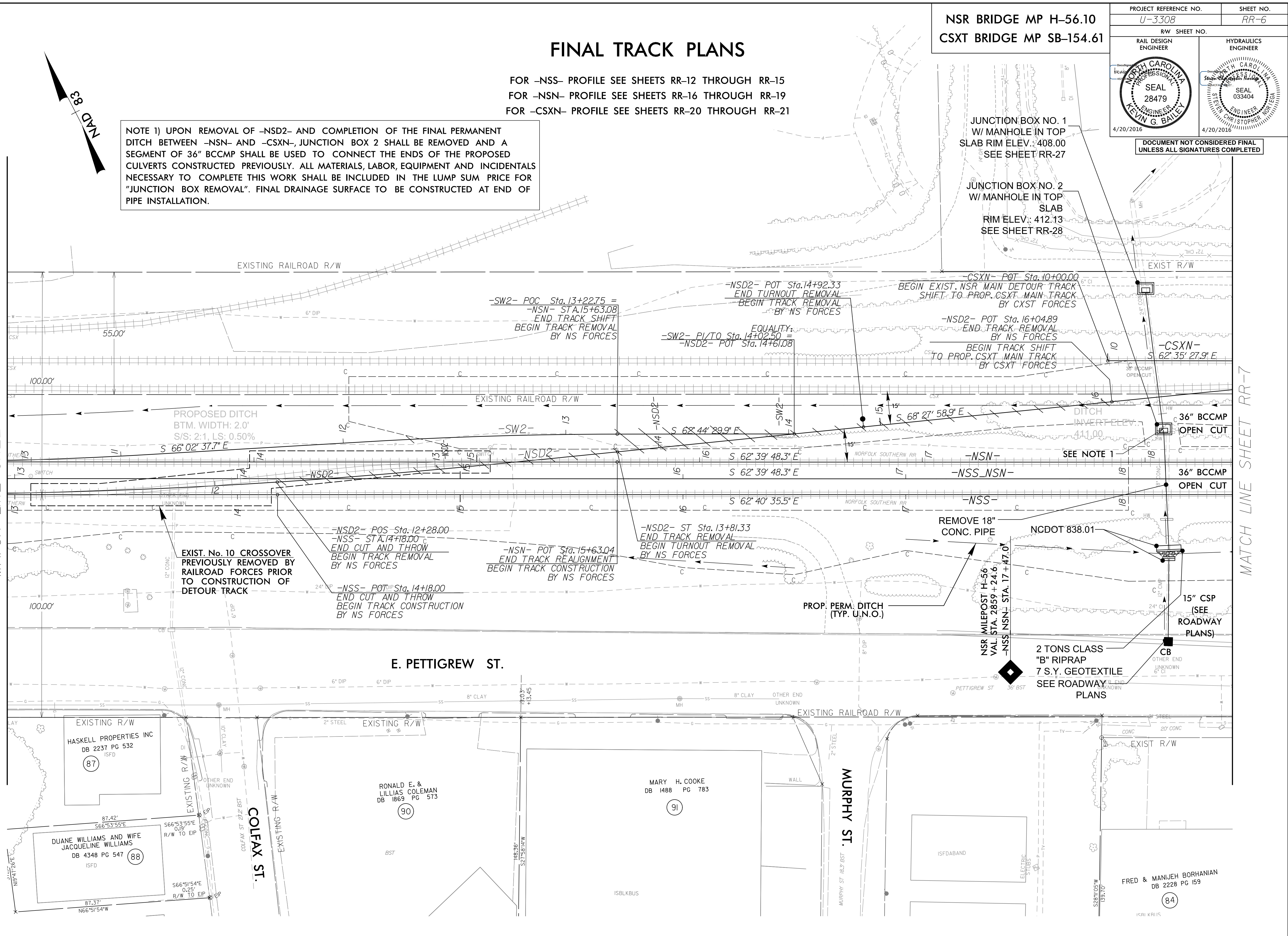
FINAL TRACK PLANS

FOR -NSS- PROFILE SEE SHEETS RR-12 THROUGH RR-15
 FOR -NSN- PROFILE SEE SHEETS RR-16 THROUGH RR-19
 FOR -CSXN- PROFILE SEE SHEETS RR-20 THROUGH RR-21

NOTE 1) UPON REMOVAL OF -NSD2- AND COMPLETION OF THE FINAL PERMANENT DITCH BETWEEN -NSN- AND -CSXN-, JUNCTION BOX 2 SHALL BE REMOVED AND A SEGMENT OF 36" BCCMP SHALL BE USED TO CONNECT THE ENDS OF THE PROPOSED CULVERTS CONSTRUCTED PREVIOUSLY. ALL MATERIALS, LABOR, EQUIPMENT AND INCIDENTALS NECESSARY TO COMPLETE THIS WORK SHALL BE INCLUDED IN THE LUMP SUM PRICE FOR "JUNCTION BOX REMOVAL". FINAL DRAINAGE SURFACE TO BE CONSTRUCTED AT END OF PIPE INSTALLATION.

MATCH LINE SHEET RR-5

MATCH LINE SHEET RR-7



E. PETTIGREW ST.

MURPHY ST.

COLFAX ST.

HASKELL PROPERTIES INC
DB 2237 PG 532
ISFD

DUANE WILLIAMS AND WIFE
JACQUELINE WILLIAMS
DB 4348 PG 547
ISFD

RONALD E. &
LILLIAS COLEMAN
DB 1869 PG 573

MARY H. COOKE
DB 1488 PG 783

FRED & MANJEH BORHANIAN
DB 2228 PG 159

P:\16\2016\513251\ustation\track\RAWA_u3308_r.dwg_p.rr-6.dgn
 2/16/2016 5:32:51 PM
 Technology