

8/17/99

NSR BRIDGE MP H-56.10
CSXT BRIDGE MP SB-154.61

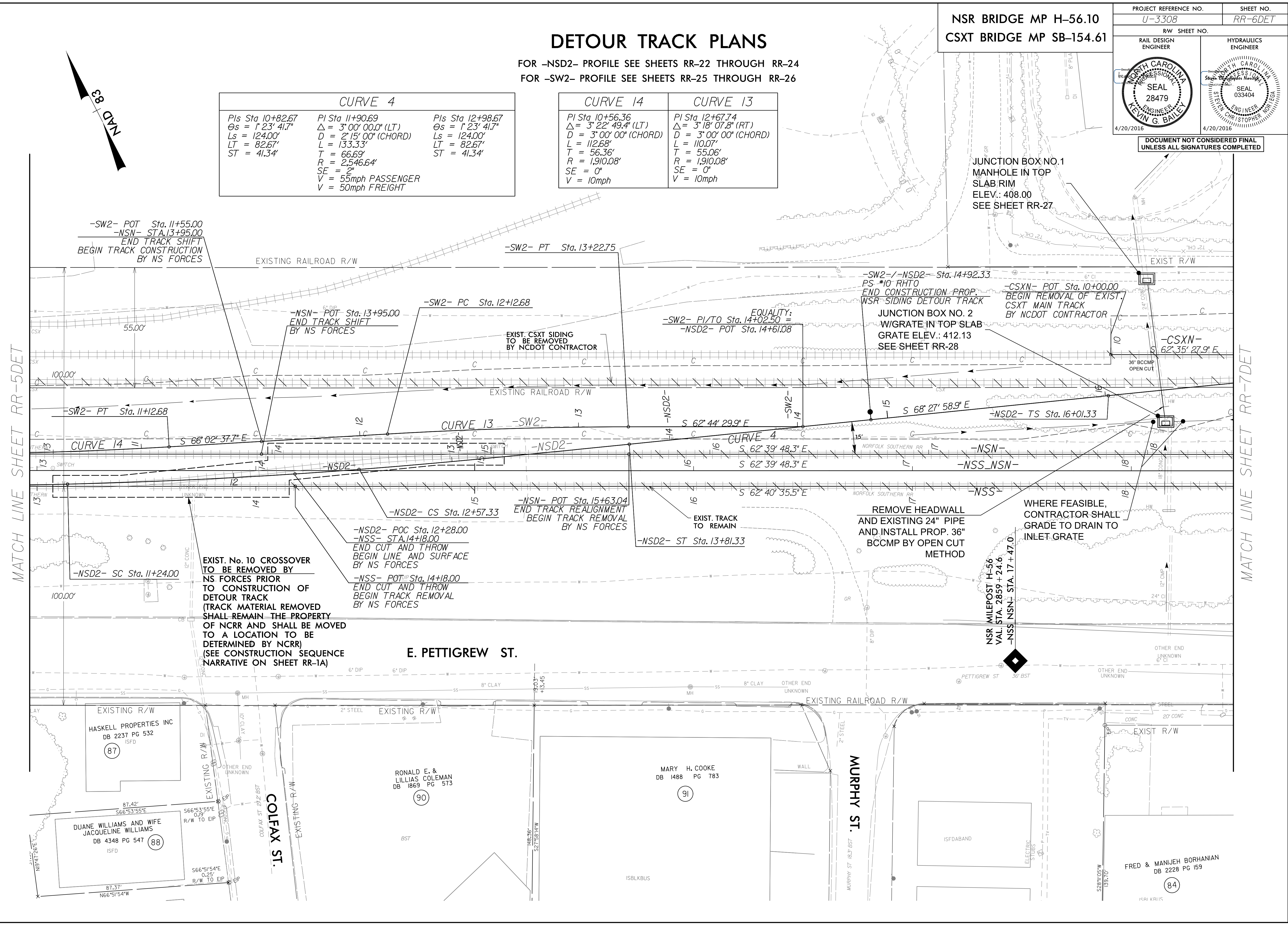
PROJECT REFERENCE NO. U-3308	SHEET NO. RR-6DET
RW SHEET NO.	
RAIL DESIGN ENGINEER	HYDRAULICS ENGINEER

DETOUR TRACK PLANS

FOR -NSD2- PROFILE SEE SHEETS RR-22 THROUGH RR-24
FOR -SW2- PROFILE SEE SHEETS RR-25 THROUGH RR-26

CURVE 4		
Pls Sta. 10+82.67	Pls Sta. 11+90.69	Pls Sta. 12+98.67
$\Theta_s = 1^\circ 23' 41.7''$	$\Delta = 3^\circ 00' 00.0''$ (LT)	$\Theta_s = 1^\circ 23' 41.7''$
$L_s = 124.00'$	$D = 2^\circ 15' 00''$ (CHORD)	$L_s = 124.00'$
$LT = 82.67'$	$L = 133.33'$	$LT = 82.67'$
$ST = 41.34'$	$T = 66.69'$	$ST = 41.34'$
	$R = 2,546.64'$	
	$SE = 2'$	
	$V = 55\text{mph PASSENGER}$	
	$V = 50\text{mph FREIGHT}$	

CURVE 14	CURVE 13
Pls Sta. 10+56.36	Pls Sta. 12+67.74
$\Delta = 3^\circ 22' 49.4''$ (LT)	$\Delta = 3^\circ 18' 07.8''$ (RT)
$D = 3^\circ 00' 00''$ (CHORD)	$D = 3^\circ 00' 00''$ (CHORD)
$L = 112.68'$	$L = 110.07'$
$T = 56.36'$	$T = 55.06'$
$R = 1,910.08'$	$R = 1,910.08'$
$SE = 0'$	$SE = 0'$
$V = 10\text{mph}$	$V = 10\text{mph}$



MATCH LINE SHEET RR-5DET

MATCH LINE SHEET RR-7DET

DOCUMENT NOT CONSIDERED FINAL
UNLESS ALL SIGNATURES COMPLETED

JUNCTION BOX NO.1
MANHOLE IN TOP
SLAB RIM
ELEV.: 408.00
SEE SHEET RR-27

JUNCTION BOX NO. 2
W/GRATE IN TOP SLAB
GRATE ELEV.: 412.13
SEE SHEET RR-28

REMOVE HEADWALL
AND EXISTING 24" PIPE
AND INSTALL PROP. 36"
BCCMP BY OPEN CUT
METHOD

WHERE FEASIBLE,
CONTRACTOR SHALL
GRADE TO DRAIN TO
INLET GRATE

EXIST. No. 10 CROSSOVER
TO BE REMOVED BY
NS FORCES PRIOR
TO CONSTRUCTION OF
DETOUR TRACK
(TRACK MATERIAL REMOVED
SHALL REMAIN THE PROPERTY
OF NCRR AND SHALL BE MOVED
TO A LOCATION TO BE
DETERMINED BY NCRR)
(SEE CONSTRUCTION SEQUENCE
NARRATIVE ON SHEET RR-1A)

E. PETTIGREW ST.

MURPHY ST.

COLFAX ST.

HASKELL PROPERTIES INC
DB 2237 PG 532
ISFD

DUANE WILLIAMS AND WIFE
JACQUELINE WILLIAMS
DB 4348 PG 547
ISFD

RONALD E. &
LILLIAS COLEMAN
DB 1869 PG 573

MARY H. COOKE
DB 1488 PG 783

FRED & MANJEH BORHANIAN
DB 2228 PG 159

P:\16\2016\2513251\station\track\RAA_u3308_r.dwg ps.RR-6A.dgn
16/06/2016 11:32:51