

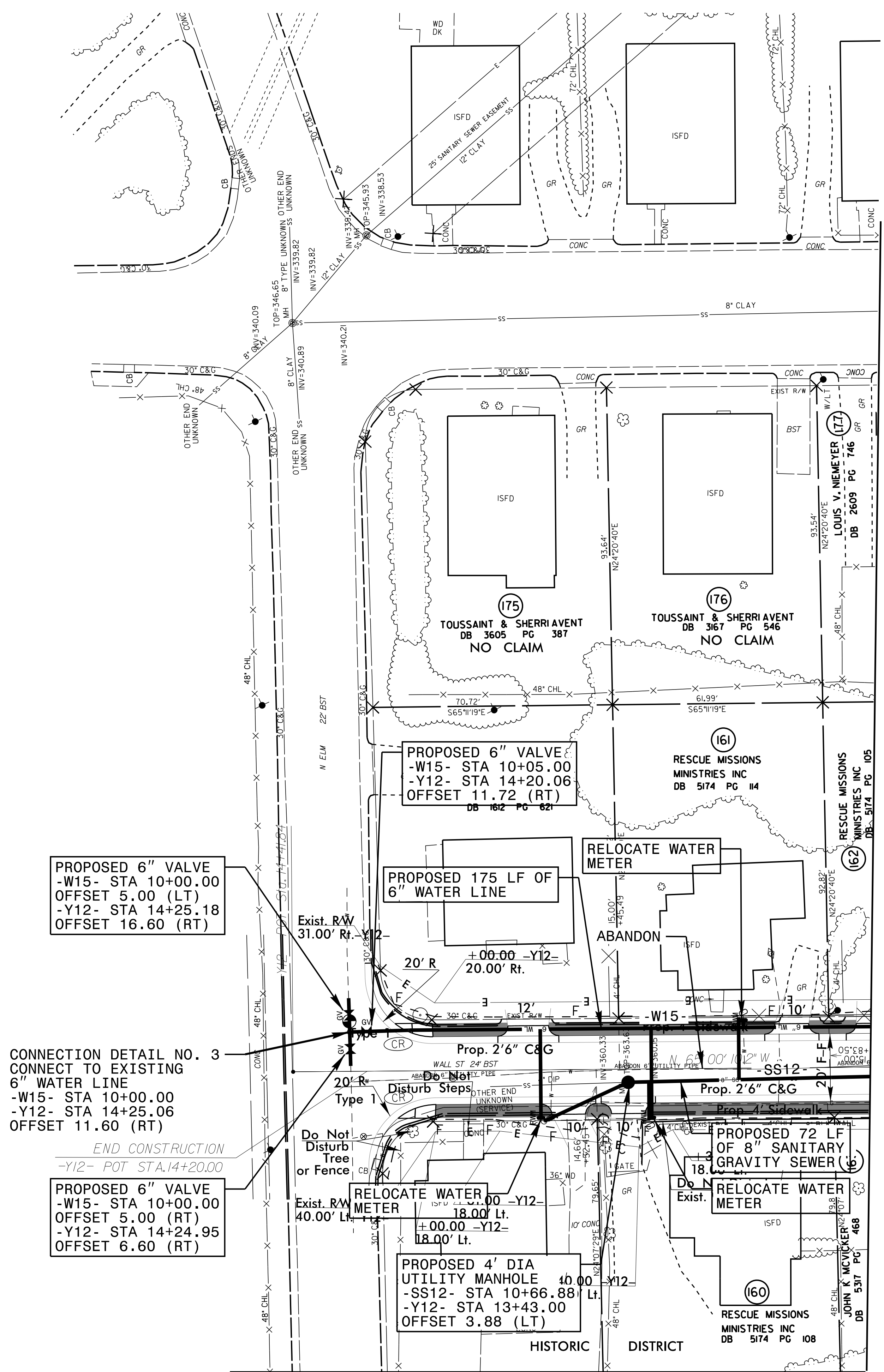


5/14/99

PROJECT REFERENCE NO.		SHEET NO.	
U-3308		UC-21	
DESIGNED BY:	DGB		
DRAWN BY:	JGB		
CHECKED BY:	KFC		
APPROVED BY:	JJW		
REVISED:			
NORTH CAROLINA DEPARTMENT OF TRANSPORTATION		UTILITIES ENGINEERING SEC. PHONE: (919) 707-6690 FAX: (919) 250-4151	
UTILITY CONSTRUCTION			

ALL WATER AND SEWER LINES SHALL BE DUCTILE IRON PIPE

SANITARY SEWER CLEAN-OUT TOTAL: 4



PROPOSED 6" VALVE  
-W15- STA 10+05.00  
-Y12- STA 14+20.06  
OFFSET 11.72 (RT)  
DB 162 PG 62

PROPOSED 6" VALVE  
-W15- STA 10+00.00  
OFFSET 5.00 (LT)  
-Y12- STA 14+25.18  
OFFSET 16.60 (RT)

PROPOSED 6" VALVE  
-W15- STA 10+00.00  
OFFSET 5.00 (RT)  
-Y12- STA 14+24.95  
OFFSET 6.60 (RT)

CONNECTION DETAIL NO. 3  
CONNECT TO EXISTING  
6" WATER LINE  
-W15- STA 10+00.00  
-Y12- STA 14+25.06  
OFFSET 11.60 (RT)

END CONSTRUCTION  
-Y12- POT STA.14+20.00

PROPOSED 175 LF OF  
6" WATER LINE

PROPOSED 4' DIA  
UTILITY MANHOLE  
-SS12- STA 10+66.88  
-Y12- STA 13+43.00  
OFFSET 3.88 (LT)

MATCH LINE SHEET UC-9

MATCH LINE SHEET 19