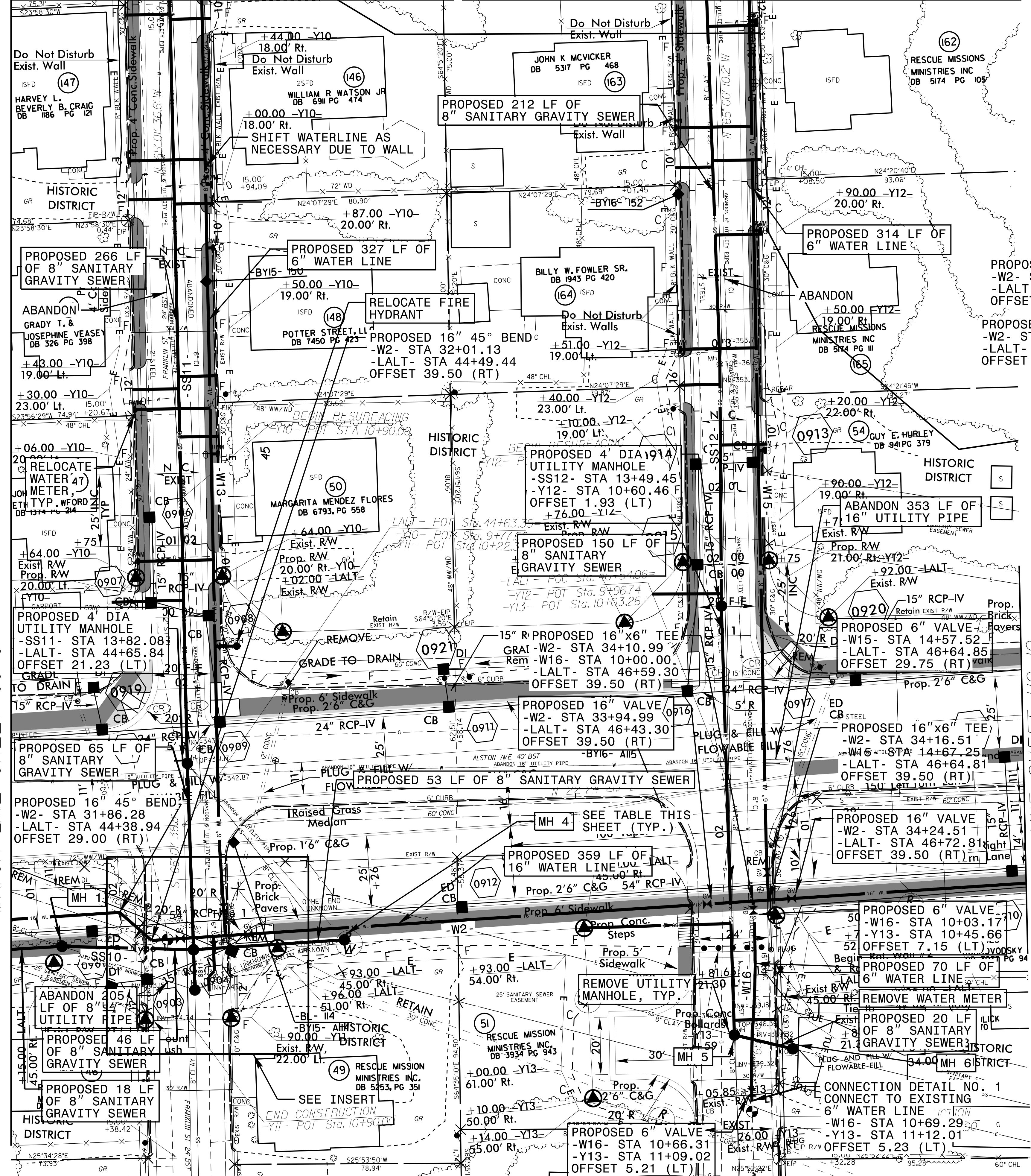




MATCH LINE SHEET UC-19

MATCH LINE SHEET UC-21

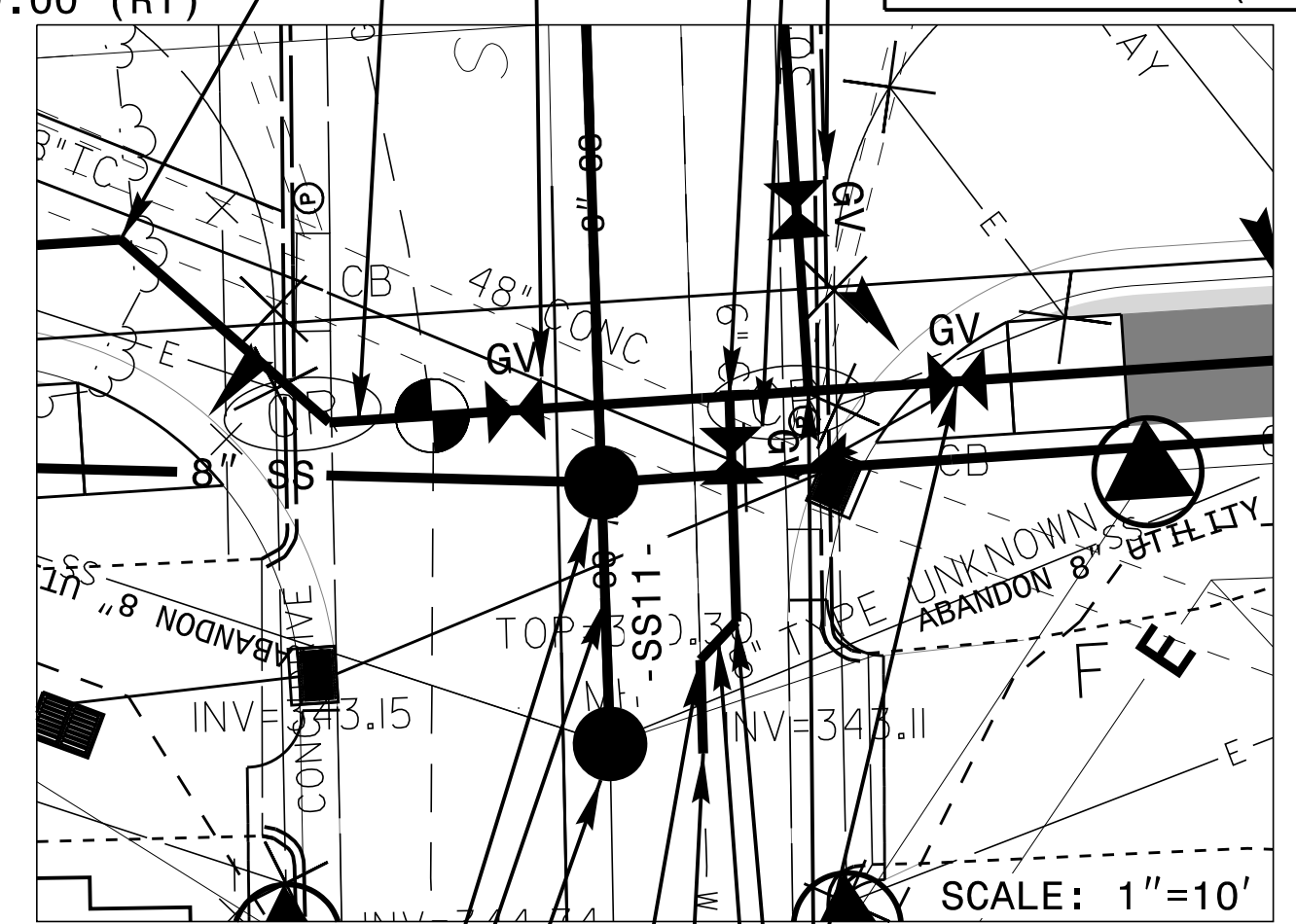
PROJECT REFERENCE NO.	SHEET NO.
U-3308	UC-9
DESIGNED BY: DGB	
DRAWN BY: JGB	
CHECKED BY: KFC	
APPROVED BY: JJW	
REVISOR:	UTILITY CONSTRUCTION PLANS ONLY
NORTH CAROLINA DEPARTMENT OF TRANSPORTATION UTILITIES ENGINEERING SECTION PHONE: (919) 707-6690 FAX: (919) 250-4151	



- MH 1  
PROPOSED 4' DIA  
UTILITY MANHOLE  
-SS10- STA 11+35.41  
-LALT- STA 44+18.14  
OFFSET 39.50 (RT)
- MH 2  
PROPOSED 4' DIA  
UTILITY MANHOLE  
-SS10- STA 11+81.22  
-SS11- STA 14+47.01  
-LALT- STA 44+63.76  
OFFSET 43.67 (RT)
- MH 3  
PROPOSED 4' DIA  
UTILITY MANHOLE  
-SS11- STA 14+61.01  
-LALT- STA 44+63.31  
OFFSET 57.66 (RT)
- MH 4  
PROPOSED 4' DIA  
UTILITY MANHOLE  
-SS10- STA 12+33.86  
-LALT- STA 45+16.40  
OFFSET 43.67 (RT)

- ALL WATER AND SEWER LINES SHALL BE DUCTILE IRON PIPE
- REMOVE UTILITY MANHOLE TOTAL: 5
- RELOCATE WATER METER TOTAL: 11
- SANITARY SEWER CLEAN-OUT TOTAL: 18

- PROPOSED 16" VALVE  
-W2- STA 32+11.11  
-LALT- STA 44+59.41  
OFFSET 39.50 (RT)
- PROPOSED 16"x6" TEE  
-W2- STA 32+22.61  
-W14- STA 10+00.00  
-LALT- STA 44+70.91  
OFFSET 39.50 (RT)
- PROPOSED 6" VALVE  
-W14- STA 10+03.18  
-Y11- STA 10+64.65  
OFFSET 9.31 (LT)
- PROPOSED 6" VALVE  
-W13- STA 14+61.67  
-Y10- STA 9+77.66  
OFFSET 13.07 (RT)
- PROPOSED 6" 45° BEND  
-W2- STA 32+01.13  
-LALT- STA 44+49.44  
OFFSET 39.50 (RT)
- PROPOSED 6" 45° BEND  
-W2- STA 31+86.28  
-LALT- STA 44+38.94  
OFFSET 29.00 (RT)
- PROPOSED 14 LF OF 8" SANITARY GRAVITY SEWER
- PROPOSED 16" VALVE  
-W2- STA 32+34.84  
-LALT- STA 44+83.14  
OFFSET 39.50 (RT)
- PROPOSED 16"x6" TEE  
-W2- STA 32+26.84  
-W13- STA 14+71.40  
-LALT- STA 44+75.14  
OFFSET 39.50 (RT)
- PROPOSED 6" 45° BEND  
-W14- STA 10+14.91  
-Y11- STA 10+75.56  
OFFSET 7.43 (LT)
- PROPOSED 6" 45° BEND  
-W14- STA 10+12.08  
-Y11- STA 10+73.54  
OFFSET 9.40 (LT)
- PROPOSED 20 LF OF 6" WATER LINE
- PROPOSED 6" VALVE  
-W16- STA 10+03.17  
-Y13- STA 10+45.66  
OFFSET 7.15 (LT)
- PROPOSED 70 LF OF 6" WATER LINE
- PROPOSED 20 LF OF 8" SANITARY GRAVITY SEWER
- PROPOSED 6" VALVE  
-W16- STA 10+66.31  
-Y13- STA 11+09.02  
OFFSET 5.21 (LT)



- MH 5  
PROPOSED 4' DIA  
UTILITY MANHOLE  
-SS12- STA 14+98.87  
-Y13- STA 10+88.96  
OFFSET 0.42 (RT)
- MH 6  
PROPOSED 4' DIA  
UTILITY MANHOLE  
-SS12- STA 15+19.78  
-Y13- STA 10+94.18  
OFFSET 19.83 (LT)

