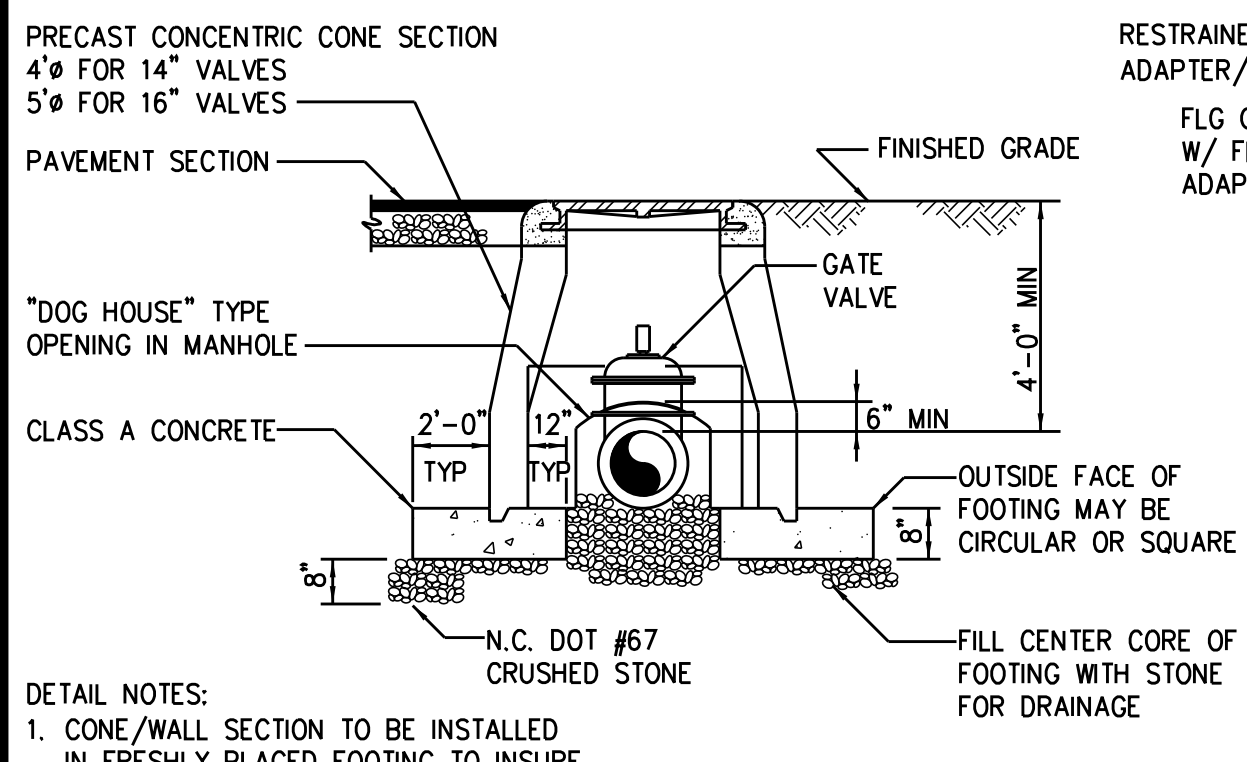
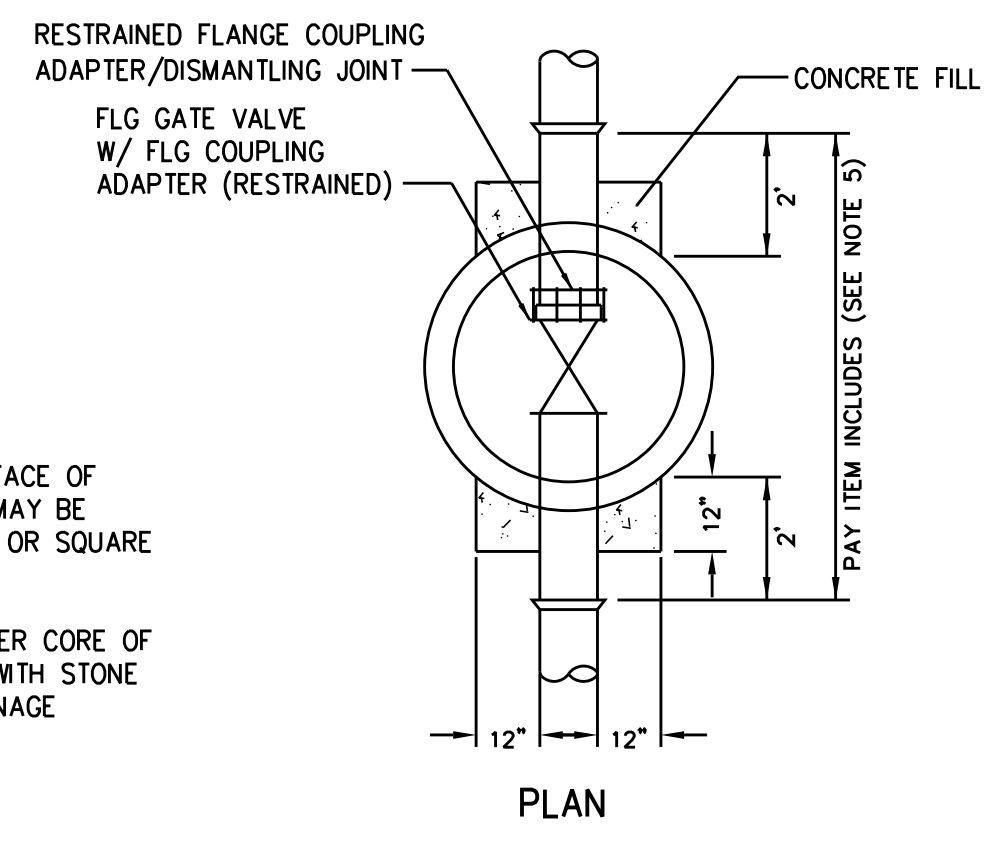


5/14/99



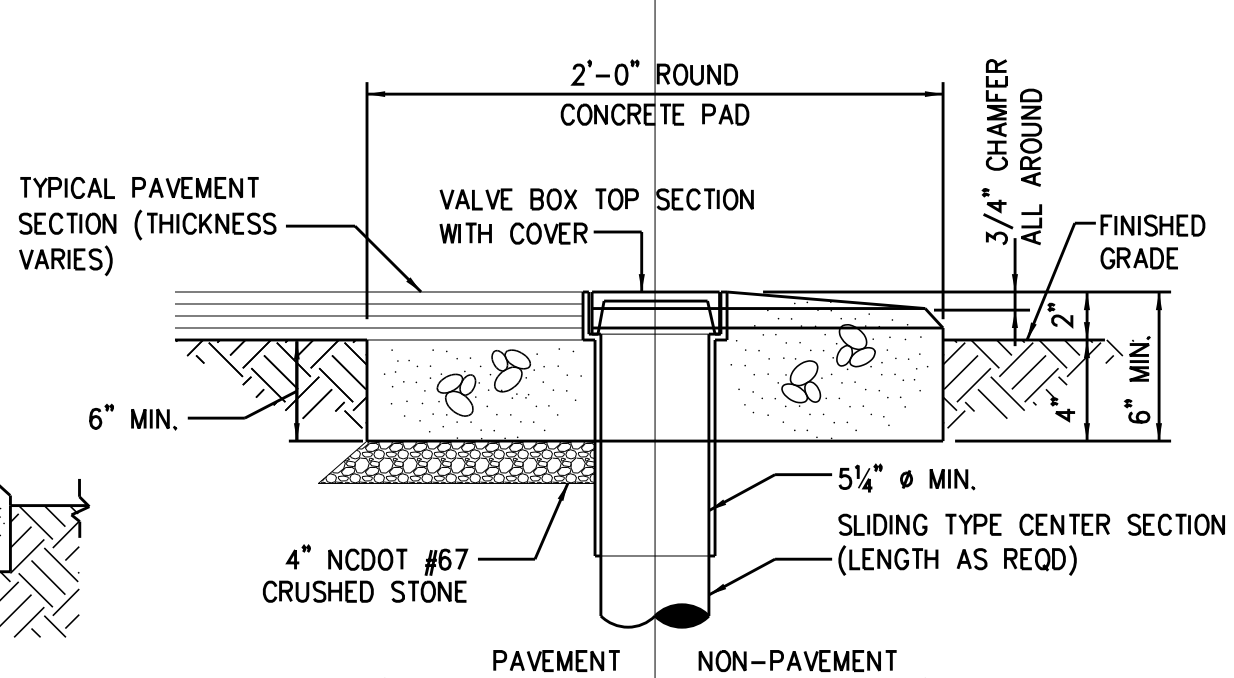
- DETAIL NOTES:**
1. CONE/WALL SECTION TO BE INSTALLED IN FRESHLY PLACED FOOTING TO INSURE UNIFORM BEARING.
 2. ADD BARREL SECTIONS TO MANHOLE AS NECESSARY.
 3. ELIMINATE FOOTING AT OPENING.
 4. 2'-0" MAXIMUM DISTANCE FROM OUTSIDE OF MANHOLE TO FIRST PIPE JOINT. (EACH SIDE OF MANHOLE)
 5. PAY ITEM DOES NOT INCLUDE PIPING.

SECTION

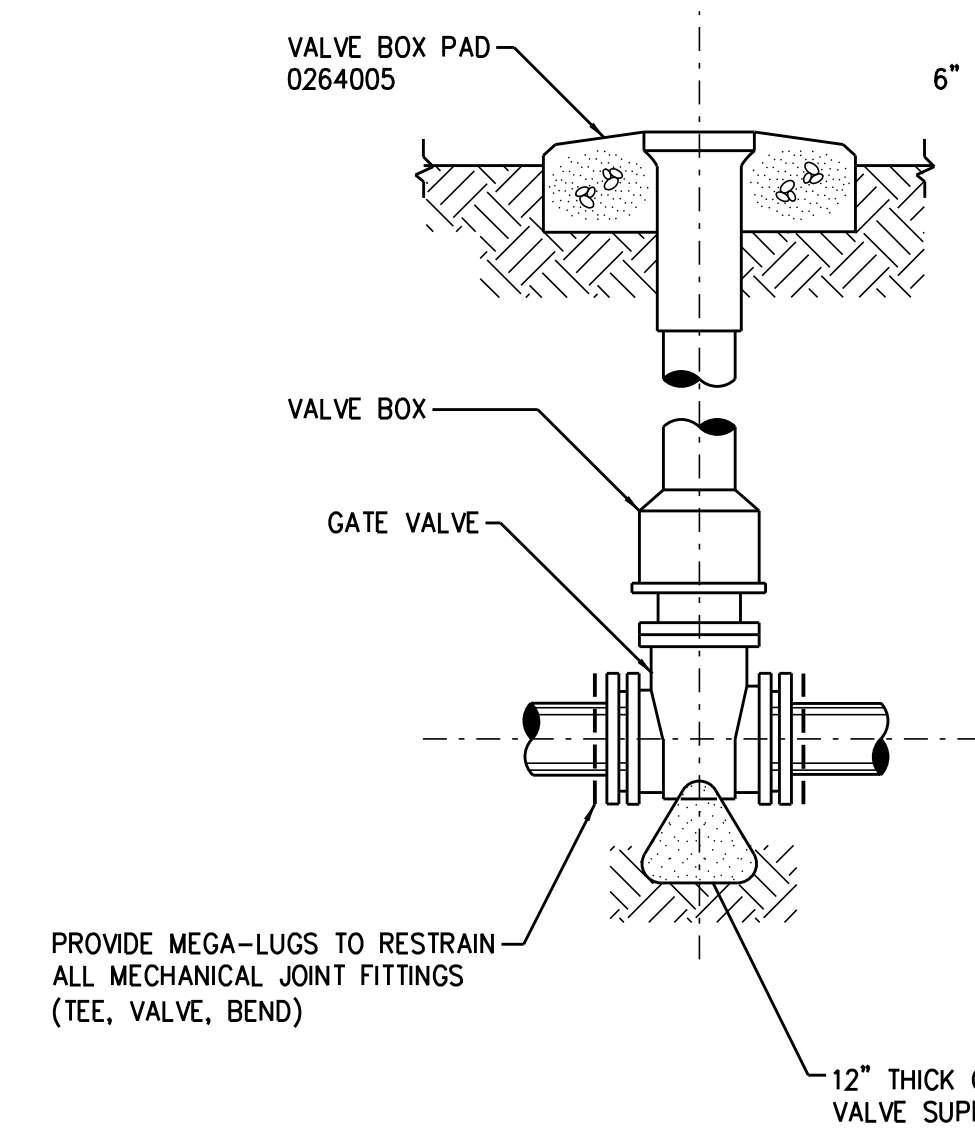


PLAN

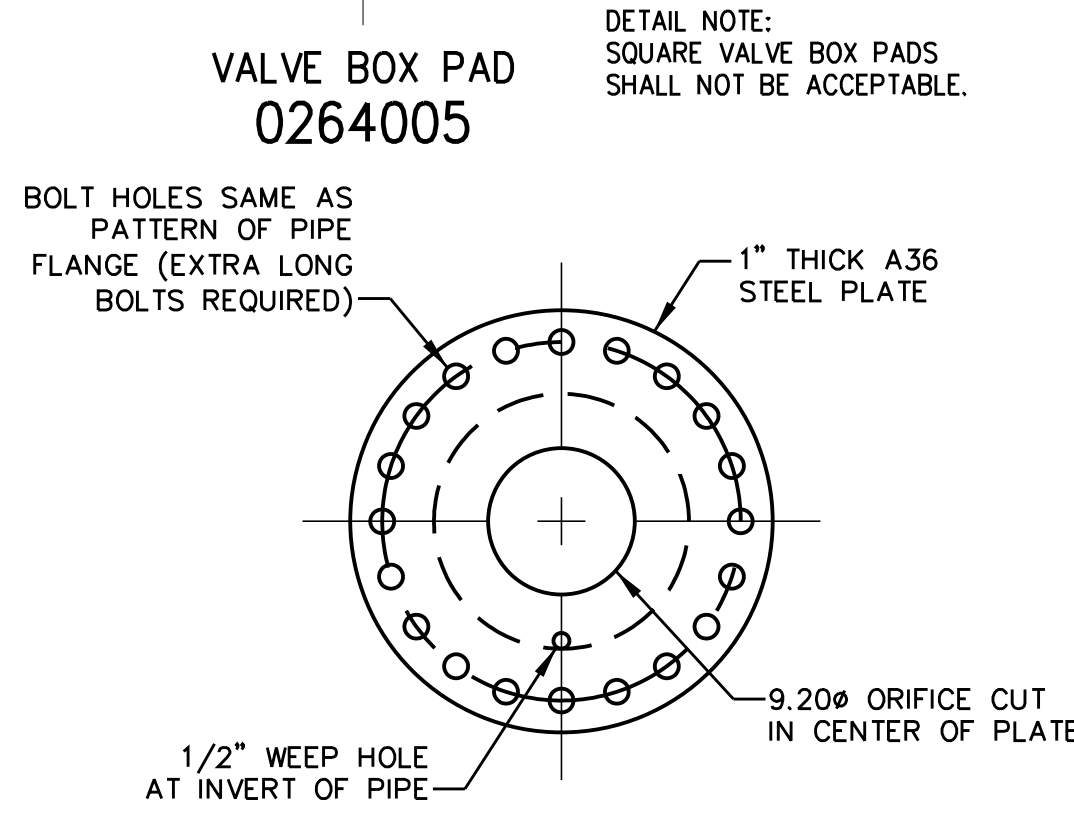
GATE VALVE ASSEMBLY (FOR 14" AND 16" VALVES) 0264001R



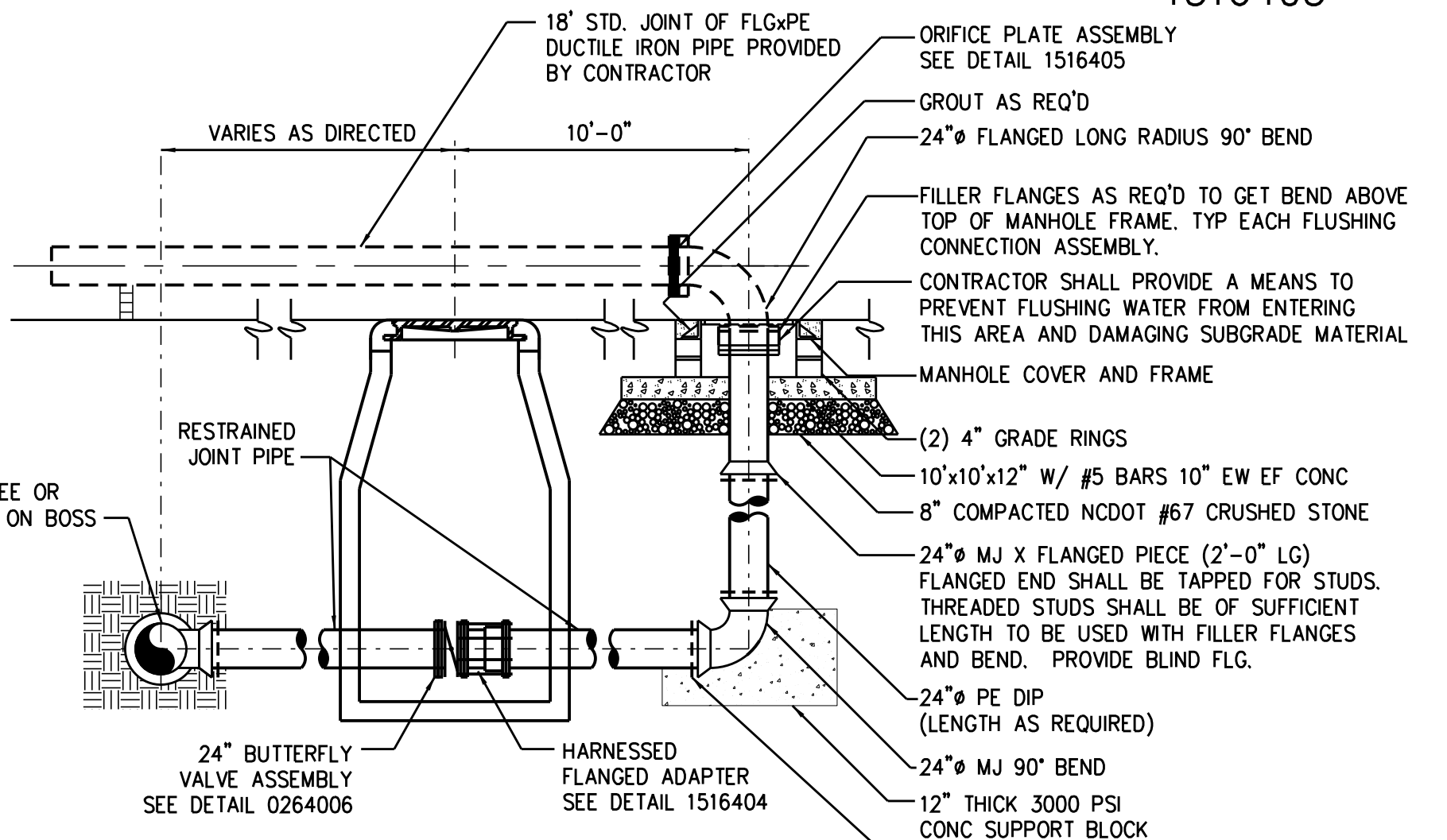
VALVE BOX PAD 0264005



GATE VALVE ASSEMBLY (FOR 4" THRU 12" VALVES) 0264013

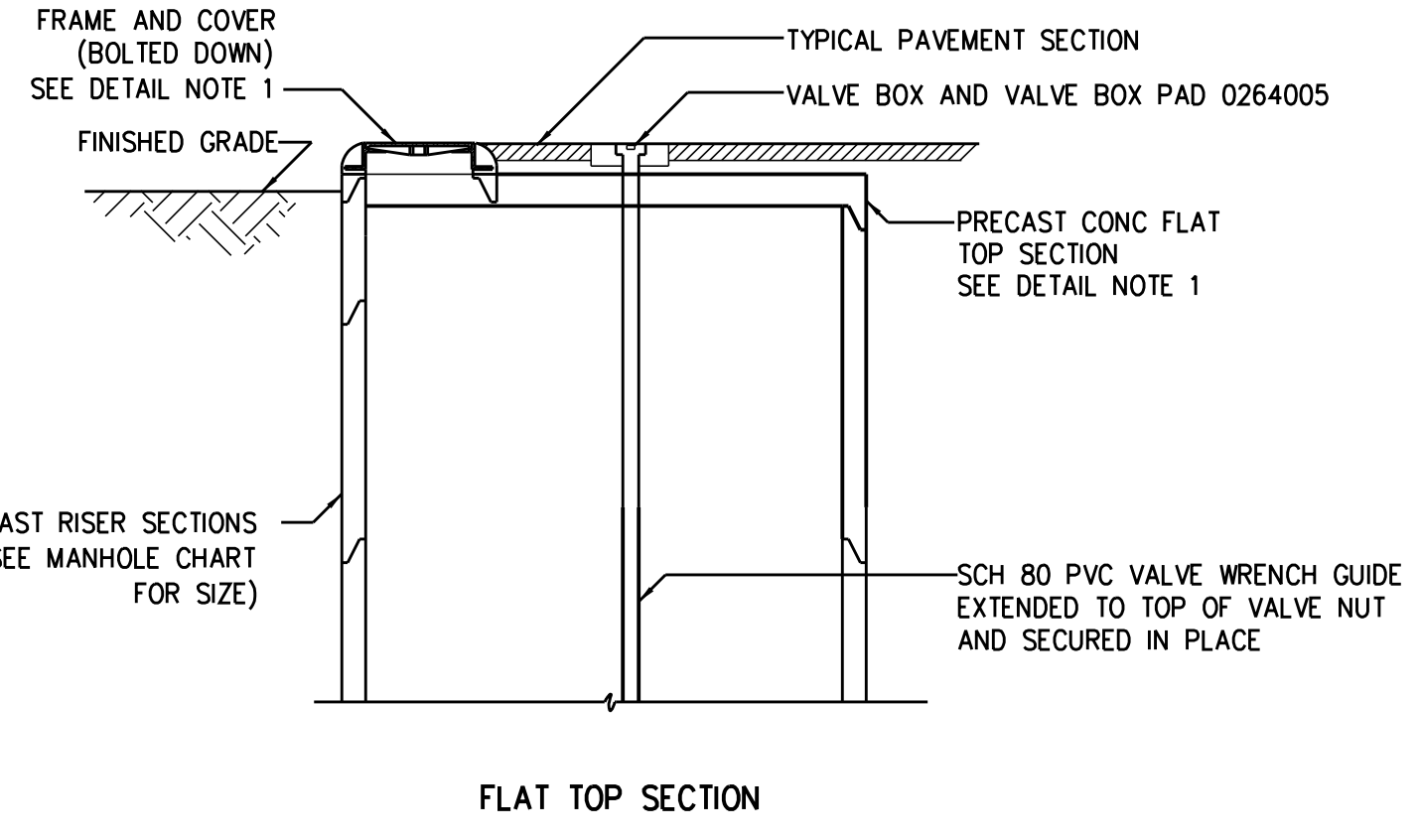


ORIFICE PLATE ASSEMBLY 1516405



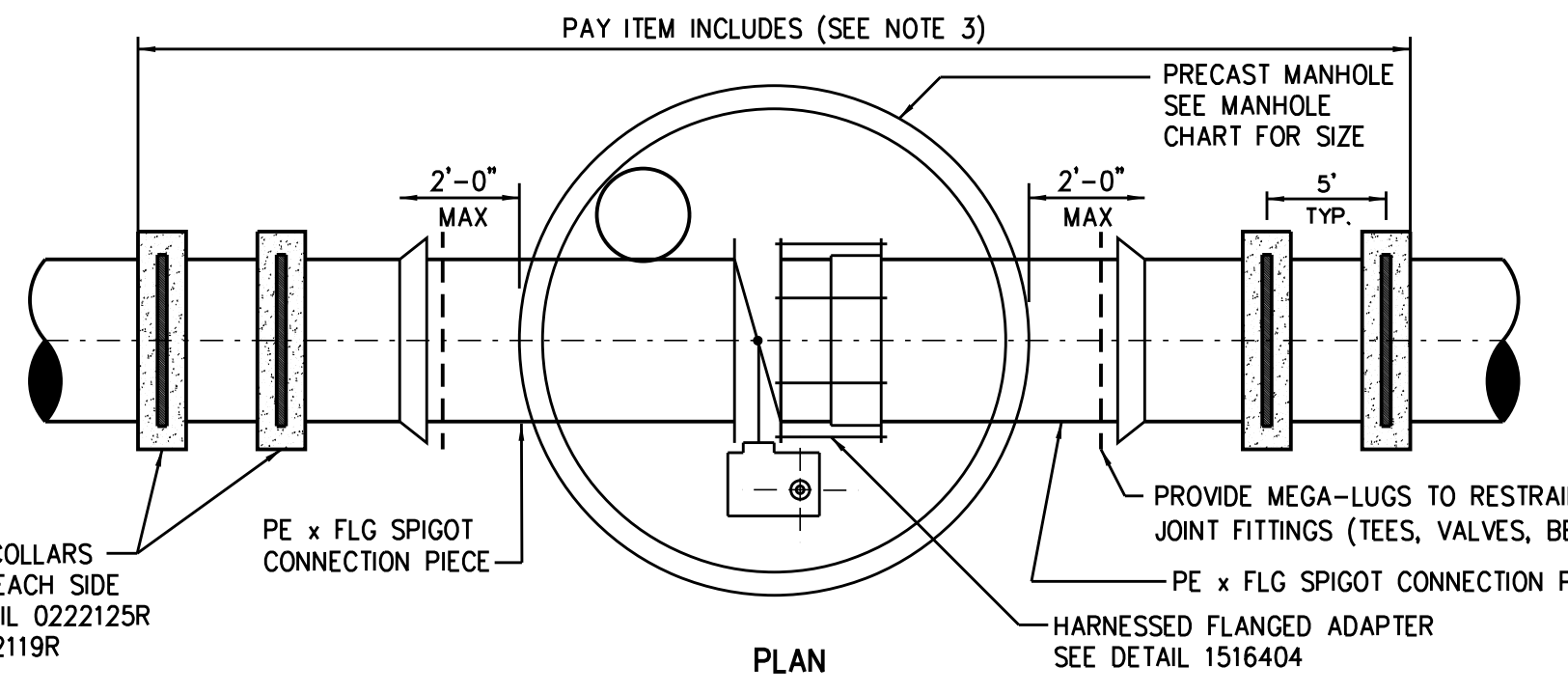
FLUSHING CONNECTION ASSEMBLY 0260118

NOTE: THE CONTRACTOR SHALL COORDINATE WITH THE RESIDENT ENGINEER/CITY OF DURHAM FOR CONTROL OF FLUSHING WATER

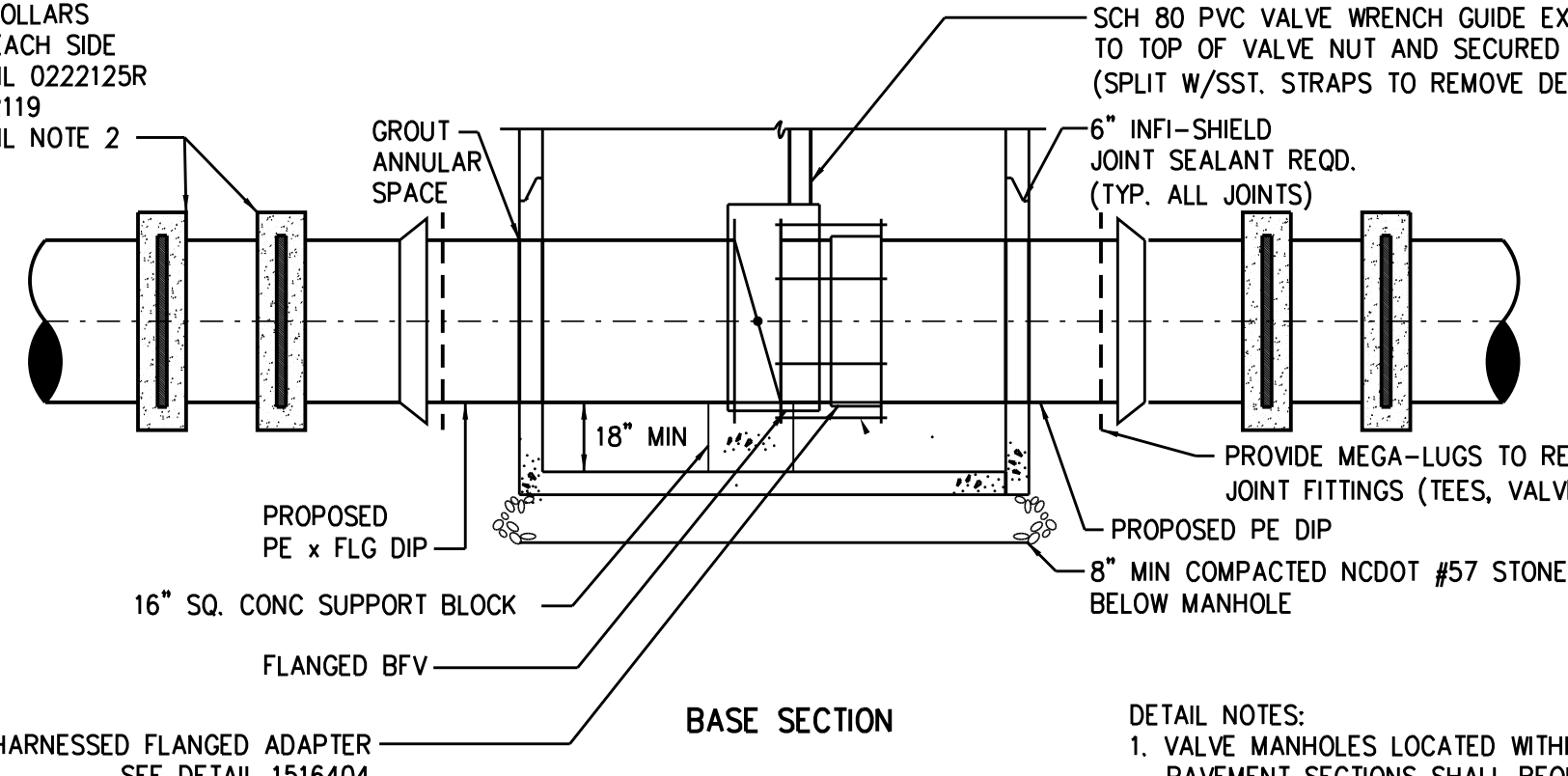


FLAT TOP SECTION

MANHOLE CHART	
VALVE SIZE	MANHOLE SIZE
18"	6'-0" DIA
20"	6'-0" DIA
24"	7'-0" DIA
30"	7'-0" DIA
36"	8'-0" DIA
42"	10'-0" DIA

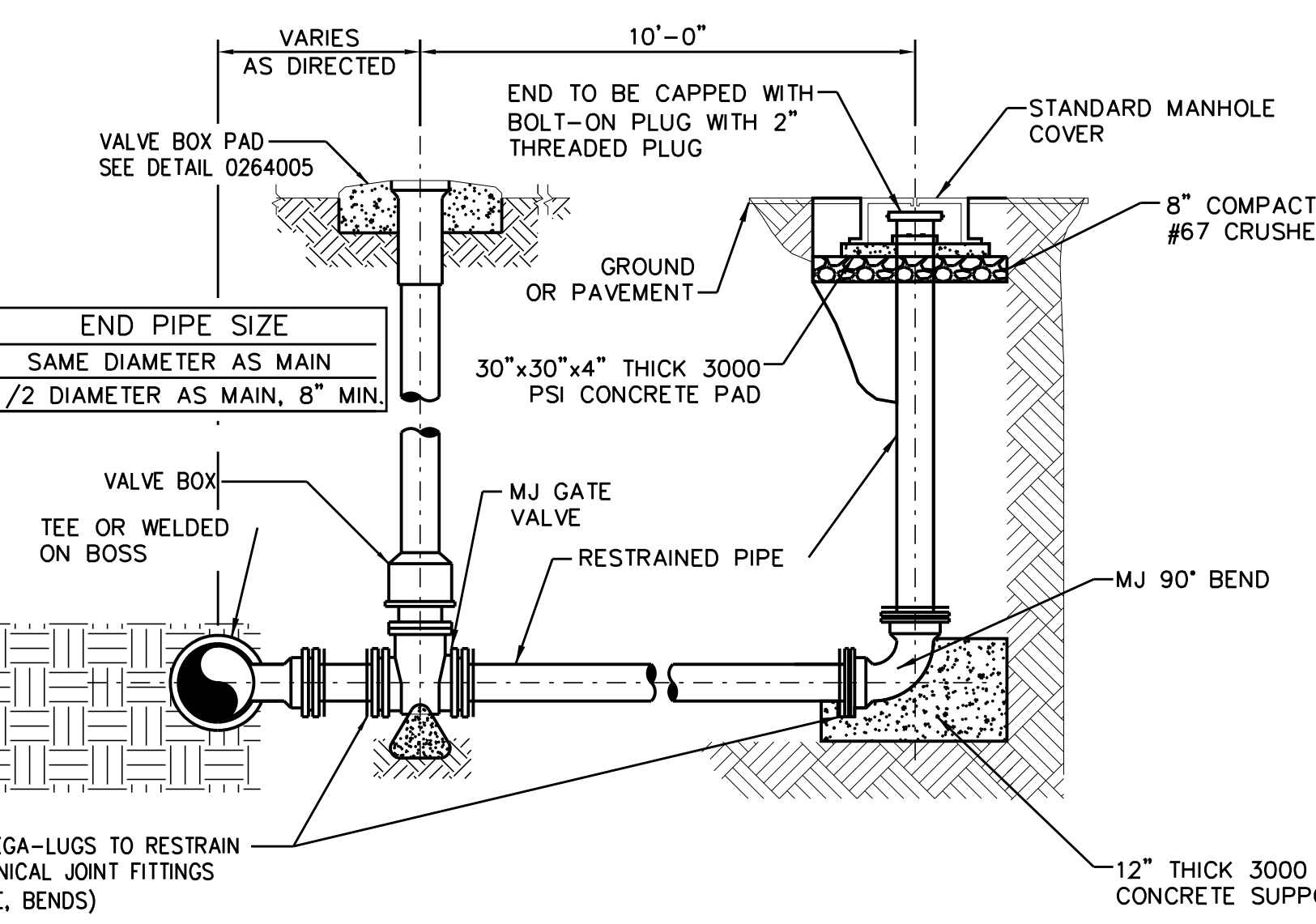


PLAN

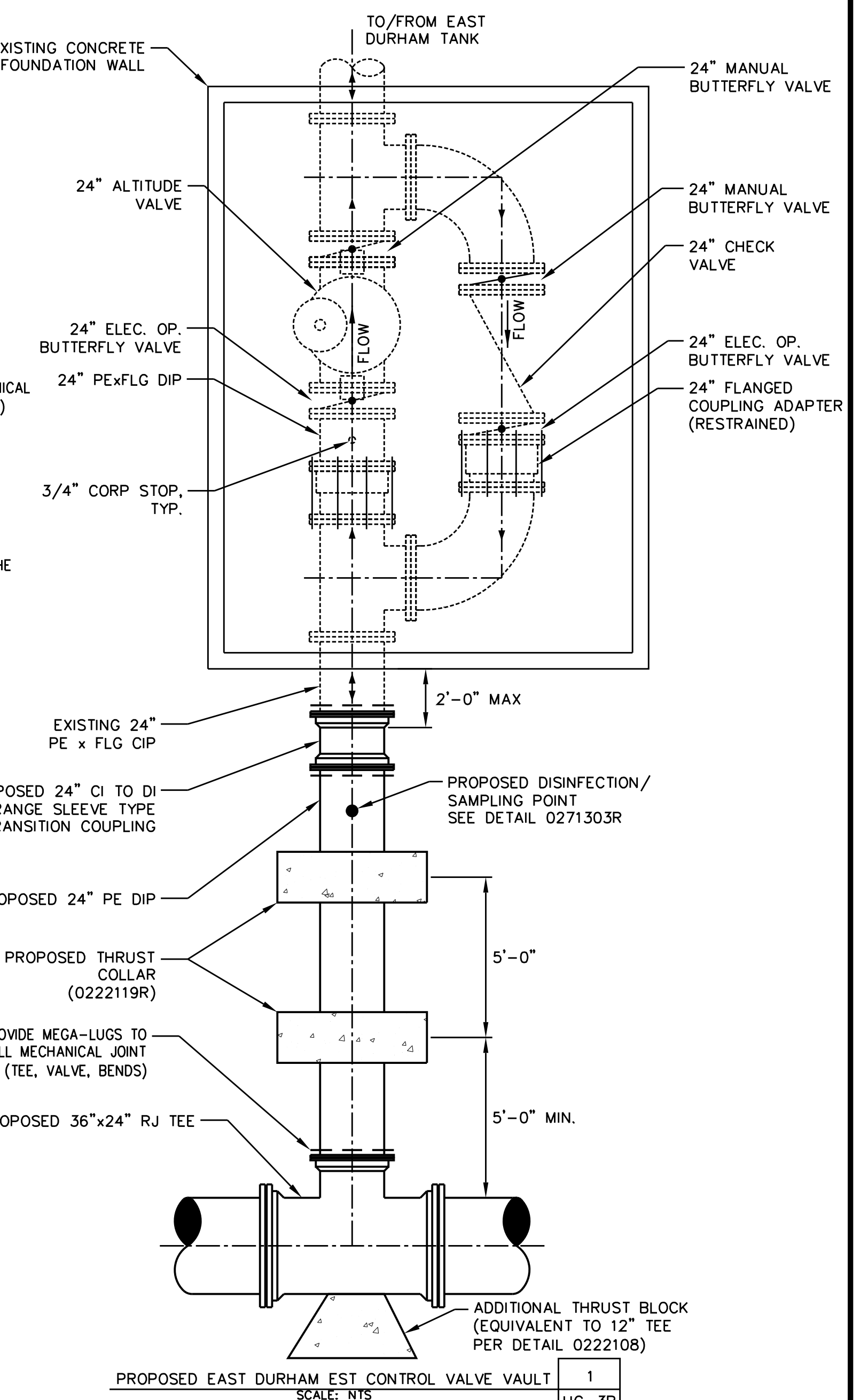


TYPICAL BUTTERFLY VALVE ASSEMBLY (FOR 18-INCH THRU 36-INCH VALVES) 0264006

MAIN SIZE	END PIPE SIZE
6" - 12"	SAME DIAMETER AS MAIN
16" - 36"	1/2 DIAMETER AS MAIN, 8" MIN.



TEMPORARY WATERLINE BLOW OFF ASSEMBLY 0271304



PROPOSED EAST DURHAM EST CONTROL VALVE VAULT 1 UC-3B

PROJECT REFERENCE NO. U-3308 SHEET NO. UC-3B

DESIGNED BY: JAR
DRAWN BY: JGB
CHECKED BY: JJW
APPROVED BY: JJW

PREPARED IN THE OFFICE OF:
Kimley»Horn
P.O. BOX 33068
RALEIGH, NORTH CAROLINA 27636-3068
PHONE: (919) 677-2000
FAX: (919) 677-2050
PE NO. F-0102

UTILITY ENGINEERING SEC. PHONE: (919) 707-6690 FAX: (919) 250-4151

UTILITY CONSTRUCTION PLANS ONLY

UTILITY CONSTRUCTION PLANS ONLY