

PROJECT REFERENCE NO.	SHEET NO.
U-3308	EC-31/CONST-10
RW SHEET NO.	
ROADWAY DESIGN ENGINEER	HYDRAULICS ENGINEER

Place Matting for Erosion Control on Slope as Work Allows. See EC-3A for Station Ranges

Place Matting for Erosion Control on Slope as Work Allows. See EC-3A for Station Ranges

Place Matting for Erosion Control on Slope as Work Allows. See EC-3A for Station Ranges

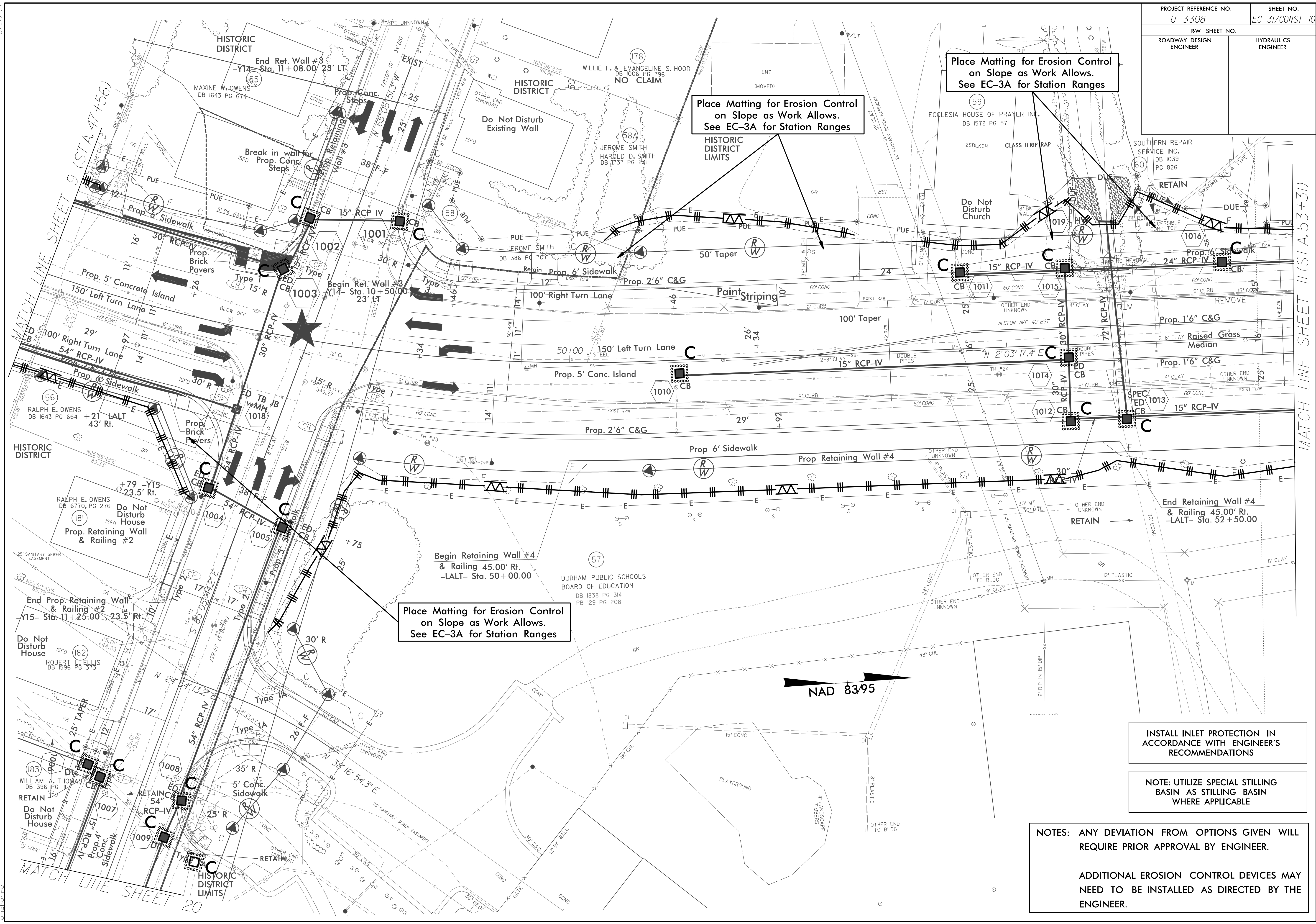
INSTALL INLET PROTECTION IN ACCORDANCE WITH ENGINEER'S RECOMMENDATIONS

NOTE: UTILIZE SPECIAL STILLING BASIN AS STILLING BASIN WHERE APPLICABLE

NOTES: ANY DEVIATION FROM OPTIONS GIVEN WILL REQUIRE PRIOR APPROVAL BY ENGINEER.

ADDITIONAL EROSION CONTROL DEVICES MAY NEED TO BE INSTALLED AS DIRECTED BY THE ENGINEER.

RW Revision 6/11/14 JCL
 Converted Permanent Utility Easement (PUE) to Temporary Construction Easement (TCE) on Parcel 57, Converted TCE to PUE on Parcel 59, Added new PUE to Parcel 60.



8/17/99
 4/13/2015
 RA:Rocob@ecnu3308.r.dj.ec.ps10.dgn
 01/01/2015

MATCH LINE SHEET 20

MATCH LINE SHEET II (STA. 53+31)

NAD 83/95