

RW Revision 6/1/14 JCL
Removed Permanent Utility Easement (PUE) from Parcel 20, Added PUE to Parcel 19

8/17/99
4/13/2015
R:\Projects\3308\EC\3308_r.dwg EC-ps05_CG.dgn

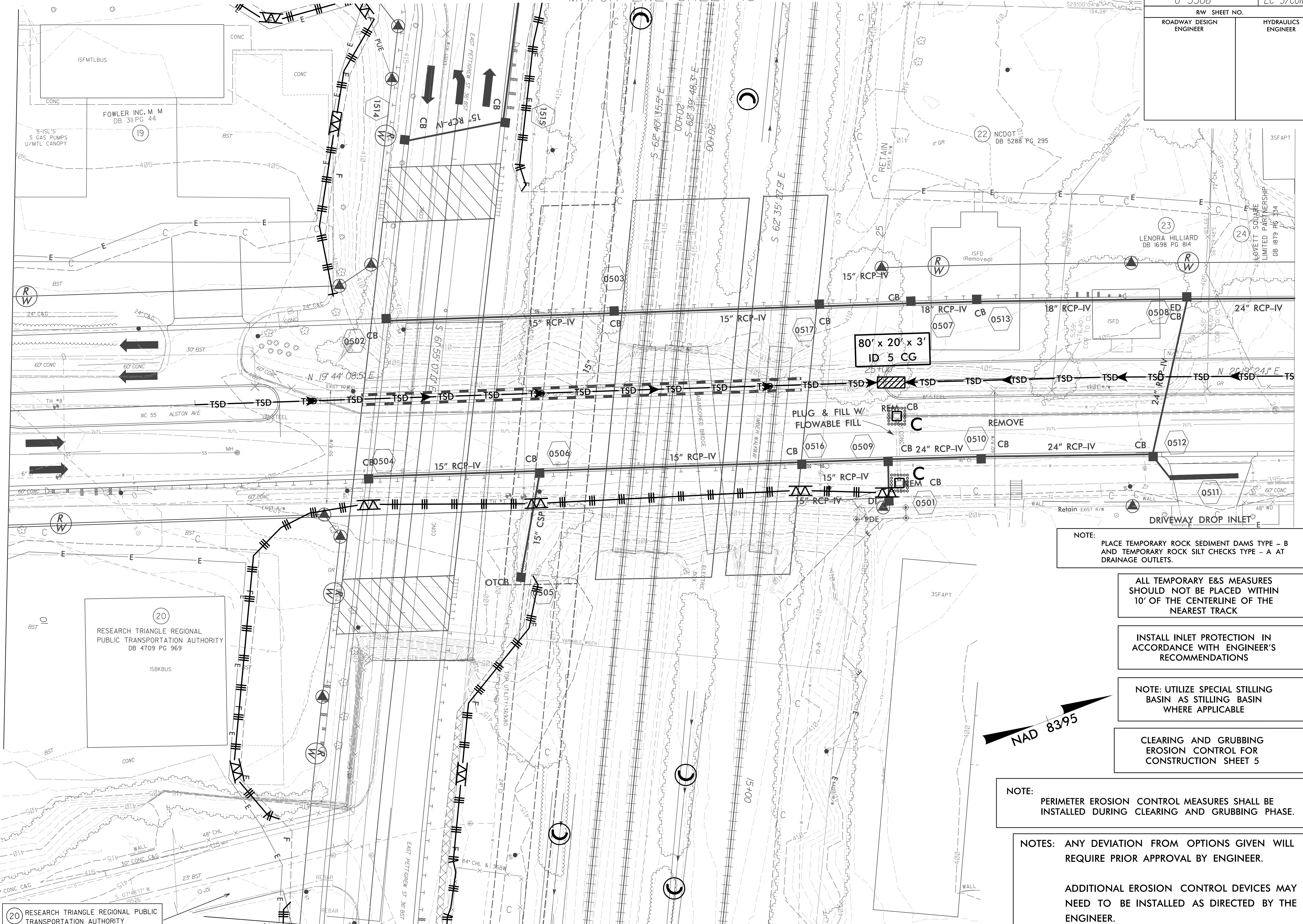
MATCH LINE SHEET 4 (STA. 2+19)

MATCH LINE SHEET 15

MATCH LINE SHEET 16

MATCH LINE SHEET 6 (STA. 26+82)

PROJECT REFERENCE NO. U-3308	SHEET NO. EC-5/CONST.5
RW SHEET NO. ROADWAY DESIGN ENGINEER	HYDRAULICS ENGINEER



NOTE: PLACE TEMPORARY ROCK SEDIMENT DAMS TYPE - B AND TEMPORARY ROCK SILT CHECKS TYPE - A AT DRAINAGE OUTLETS.

ALL TEMPORARY E&S MEASURES SHOULD NOT BE PLACED WITHIN 10' OF THE CENTERLINE OF THE NEAREST TRACK

INSTALL INLET PROTECTION IN ACCORDANCE WITH ENGINEER'S RECOMMENDATIONS

NOTE: UTILIZE SPECIAL STILLING BASIN AS STILLING BASIN WHERE APPLICABLE

CLEARING AND GRUBBING EROSION CONTROL FOR CONSTRUCTION SHEET 5

NOTE: PERIMETER EROSION CONTROL MEASURES SHALL BE INSTALLED DURING CLEARING AND GRUBBING PHASE.

NOTES: ANY DEVIATION FROM OPTIONS GIVEN WILL REQUIRE PRIOR APPROVAL BY ENGINEER.

ADDITIONAL EROSION CONTROL DEVICES MAY NEED TO BE INSTALLED AS DIRECTED BY THE ENGINEER.

20 RESEARCH TRIANGLE REGIONAL PUBLIC TRANSPORTATION AUTHORITY DB 4709 PG 969

20 RESEARCH TRIANGLE REGIONAL PUBLIC TRANSPORTATION AUTHORITY DB 4709 PG 969

19 FOWLER INC. M M DB 311 PG 44

