

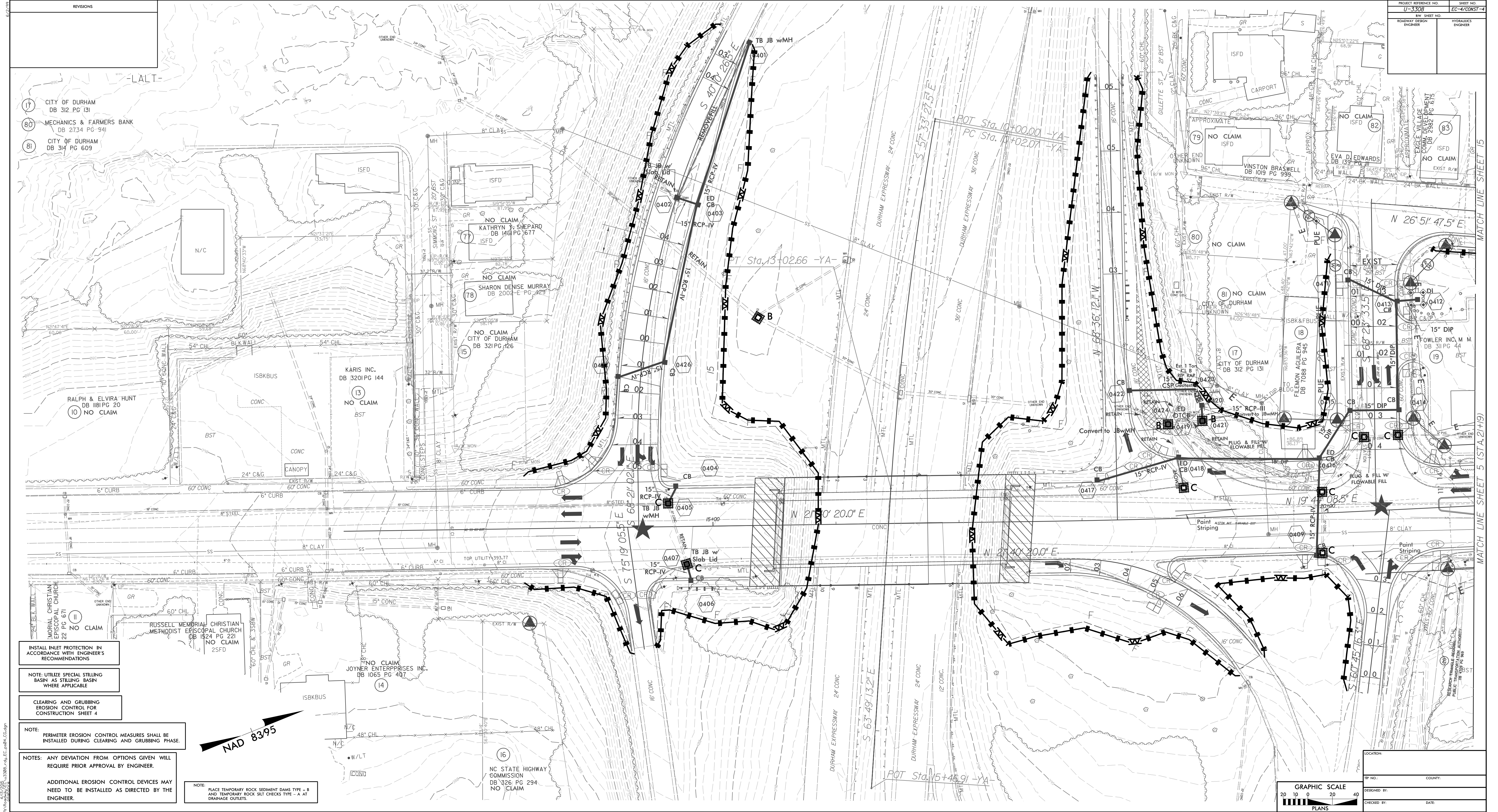
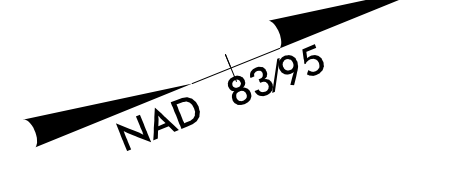
BW Revision 5/7/14 JCI  
 Existing Property Lines, Proposed Right of Way and Temporary Construction Lines Adjusted on Parcel 20

REVISIONS	

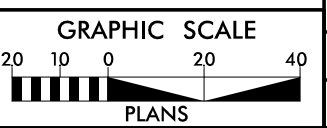
- (17) CITY OF DURHAM DB 312 PG 131
- (80) MECHANICS & FARMERS BANK DB 2734 PG 341
- (81) CITY OF DURHAM DB 314 PG 609

- INSTALL INLET PROTECTION IN ACCORDANCE WITH ENGINEER'S RECOMMENDATIONS
- NOTE: UTILIZE SPECIAL STILLING BASIN AS STILLING BASIN WHERE APPLICABLE
- CLEARING AND GRUBBING EROSION CONTROL FOR CONSTRUCTION SHEET 4
- NOTE: PERIMETER EROSION CONTROL MEASURES SHALL BE INSTALLED DURING CLEARING AND GRUBBING PHASE
- NOTES: ANY DEVIATION FROM OPTIONS GIVEN WILL REQUIRE PRIOR APPROVAL BY ENGINEER.
- ADDITIONAL EROSION CONTROL DEVICES MAY NEED TO BE INSTALLED AS DIRECTED BY THE ENGINEER.

NOTE: PLACE TEMPORARY ROCK SEDIMENT DAMS TYPE - B AND TEMPORARY ROCK SILT CHECKS TYPE - A AT DRAINAGE OUTLETS



PROJECT REFERENCE NO.	SHEET NO.
11-3328	EC-4/CONST-4
R/W SHEET NO.	HYDRAULICS ENGINEER



DATE:	COUNTY:
DESIGNED BY:	CHECKED BY:

MATCH LINE SHEET 5 (STA. 2+19)

MATCH LINE SHEET 15