

CONSTRUCTION REVISION 1/16/2018 JBG - MODIFIED ROADWAY APPROACH, LANE CONFIGURATION, AND SIDEWALK TO ACCOMMODATE A WALKWAY ON THE PETTIGREW STREET BRIDGE FROM -Y- STA. 12+00.00 TO STA. 20+40.63

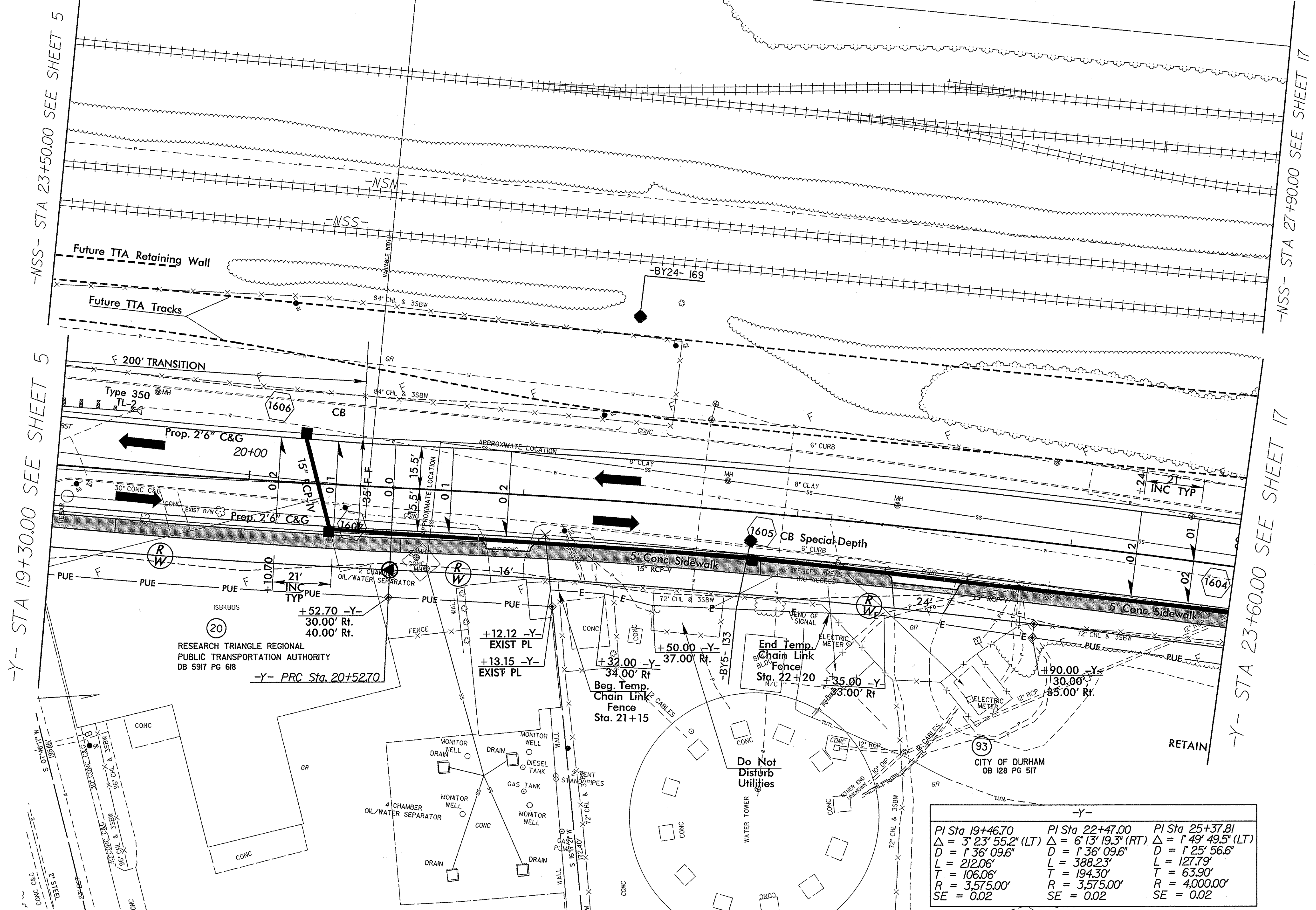
8/17/89

12-JAN-2018 09:15  
 R:\Roadway\Proj\13308.rdy-ps16.dgn  
 \$\$\$\$\$\$13308.rdy\$\$\$\$\$

FOR -Y- PROFILE SEE SHEETS 30 & 31  
 FOR -CSXN- SEE TRACK PLANS  
 FOR -NSN- SEE TRACK PLANS  
 FOR -NSS- SEE TRACK PLANS

NOTE 1: REMOVE PIPE OR FILL WITH FLOWABLE FILL

PROJECT REFERENCE NO. U-3308	SHEET NO. 16
RW SHEET NO.	
ROADWAY DESIGN ENGINEER PROFESSIONAL SEAL 19795 Wm. H. Moore 1/16/18	HYDRAULICS ENGINEER PROFESSIONAL SEAL 019721 Wm. H. Moore 1/16/2018



-Y- STA 19+30.00 SEE SHEET 5

-NSS- STA 23+50.00 SEE SHEET 5

-NSS- STA 27+90.00 SEE SHEET 17

-Y- STA 23+60.00 SEE SHEET 17

RESEARCH TRIANGLE REGIONAL  
 PUBLIC TRANSPORTATION AUTHORITY  
 DB 5917 PG 618

-Y- PRC Sta. 20+52.70

+12.12 -Y- EXIST PL  
 +13.15 -Y- EXIST PL  
 +32.00 -Y- 34.00' Rt  
 Beg. Temp. Chain Link Fence Sta. 21+15

+50.00 -Y- 37.00' Rt  
 +35.00 -Y- 33.00' Rt  
 End Temp. Chain Link Fence Sta. 22+20

-Y-		
PI Sta 19+46.70	PI Sta 22+47.00	PI Sta 25+37.81
$\Delta = 3' 23' 55.2''$ (LT)	$\Delta = 6' 13' 19.3''$ (RT)	$\Delta = 1' 49' 49.5''$ (LT)
D = 1' 36' 09.6"	D = 1' 36' 09.6"	D = 1' 25' 56.6"
L = 212.06'	L = 388.23'	L = 127.79'
T = 106.06'	T = 194.30'	T = 63.90'
R = 3,575.00'	R = 3,575.00'	R = 4,000.00'
SE = 0.02	SE = 0.02	SE = 0.02

