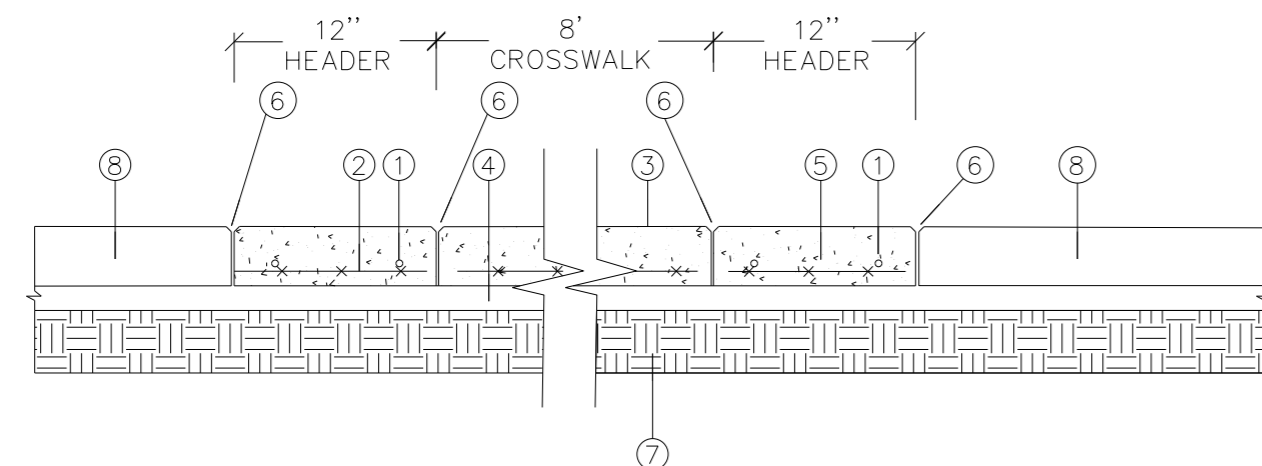
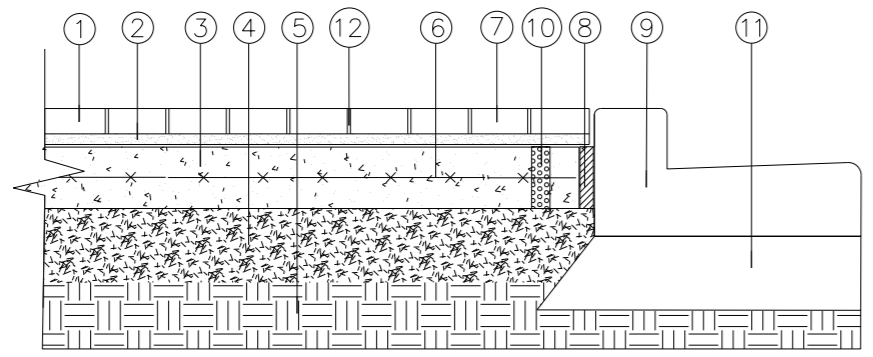


5/14/99



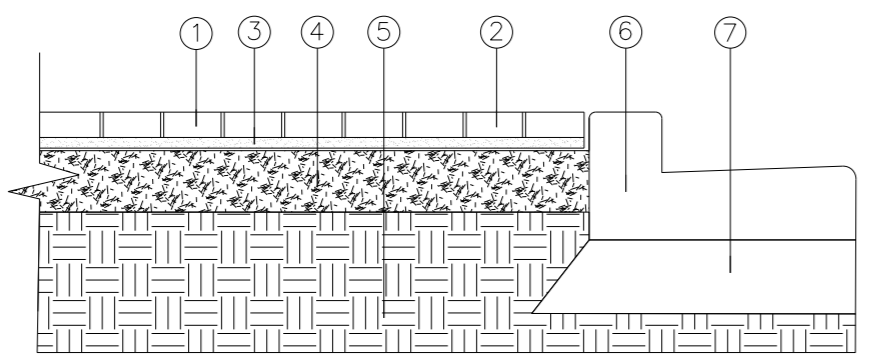
1 COLORED CONCRETE CROSSWALK WITH CONCRETE HEADERS  
NOT TO SCALE

- 1 TWO (2) #4 REBAR FOR EACH HEADER (PROVIDE COVER FROM ALL SIDES)
- 2 CONTINUOUS 6" X 6" X W2.9 X W2.9 WELDED WIRE MESH (FOR CROSSWALK AND CONCRETE HEADERS ONLY)
- 3 IMPRINTED/COLORED CONCRETE (SEE PLAN FOR TYPE)
- 4 4" B25.0 ASPHALT CONCRETE BASE
- 5 8" CONCRETE
- 6 1/4" TOOLED CHAMFERED EDGE (BOTH SIDES)
- 7 COMPACTED SUBGRADE
- 8 ADJACENT ASPHALT ROADWAY



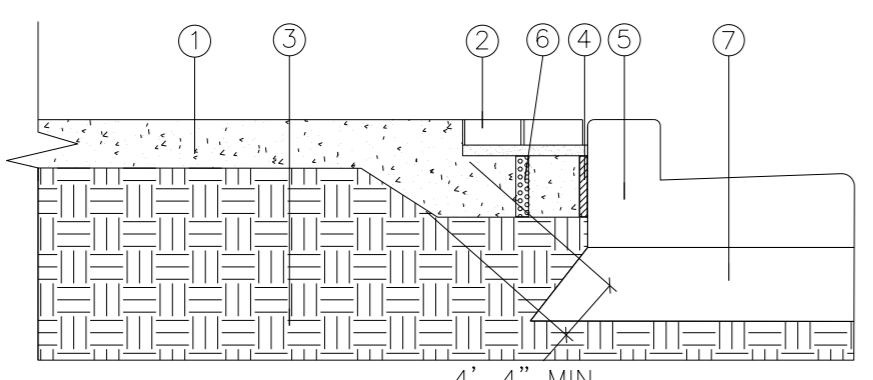
2 REINFORCED PAVER WALKWAY WITH CONTINUOUS PAVER BAND AT CURB  
NOT TO SCALE

- 1 PAVER (SEE PLAN FOR TYPE)
- 2 1 1/2" SETTING BED MATERIAL
- 3 6" CONCRETE SLAB
- 4 4" COMPACTED BASE COURSE
- 5 COMPACTED SUBGRADE
- 6 6" X 6" X W2.9 X W2.9 WELDED WIRE MESH
- 7 CONTINUOUS PAVER BAND
- 8 EXPANSION JOINT (BETWEEN CONCRETE SUB-SLAB AND CURB)
- 9 CONCRETE CURB AND GUTTER (SEE ROADWAY PLANS)
- 10 6-2" DIA DRAIN HOLES, 12" O.C. PARALLEL TO CURB - LOCATE AT LOWEST ELEV. FILL WITH PEA GRAVEL
- 11 ADJACENT ASPHALT ROADWAY
- 12 FILL THE BRICK JOINTS WITH POLYMERIC SAND



3 STANDARD PAVER WALKWAY WITH CONTINUOUS PAVER BAND AT CURB  
NOT TO SCALE

- 1 PAVER (SEE PLAN FOR TYPE)
- 2 CONTINUOUS PAVER BAND
- 3 1 1/2" SETTING BED MATERIAL
- 4 6" COMPACTED BASE COURSE
- 5 COMPACTED SUBGRADE
- 6 CONCRETE CURB AND GUTTER (SEE ROADWAY PLANS)
- 7 ADJACENT ASPHALT ROADWAY

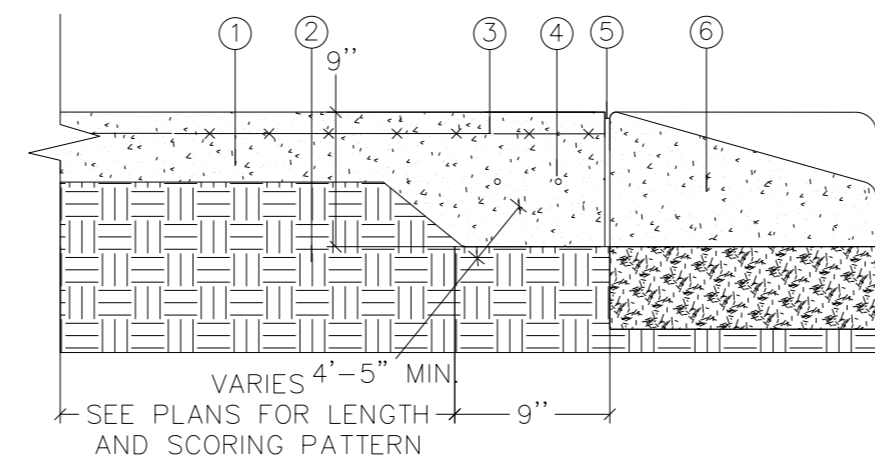


4 CONCRETE WALKWAY WITH CONTINUOUS PAVER BAND AT CURB  
NOT TO SCALE

- 1 4" CONCRETE SIDEWALK
- 2 CONTINUOUS PAVER BAND ON 3 1/2" SETTING BED
- 3 COMPACTED SUB-GRADE
- 4 EXPANSION JOINT (BETWEEN CONCRETE SUB-SLAB AND CURB)
- 5 CONCRETE CURB AND GUTTER (SEE ROADWAY PLANS)
- 6 6-2" DIA DRAIN HOLES, 12" O.C. PARALLEL TO CURB - LOCATE AT LOWEST ELEVATIONS - FILL WITH PEA GRAVEL
- 7 ADJACENT ASPHALT ROADWAY

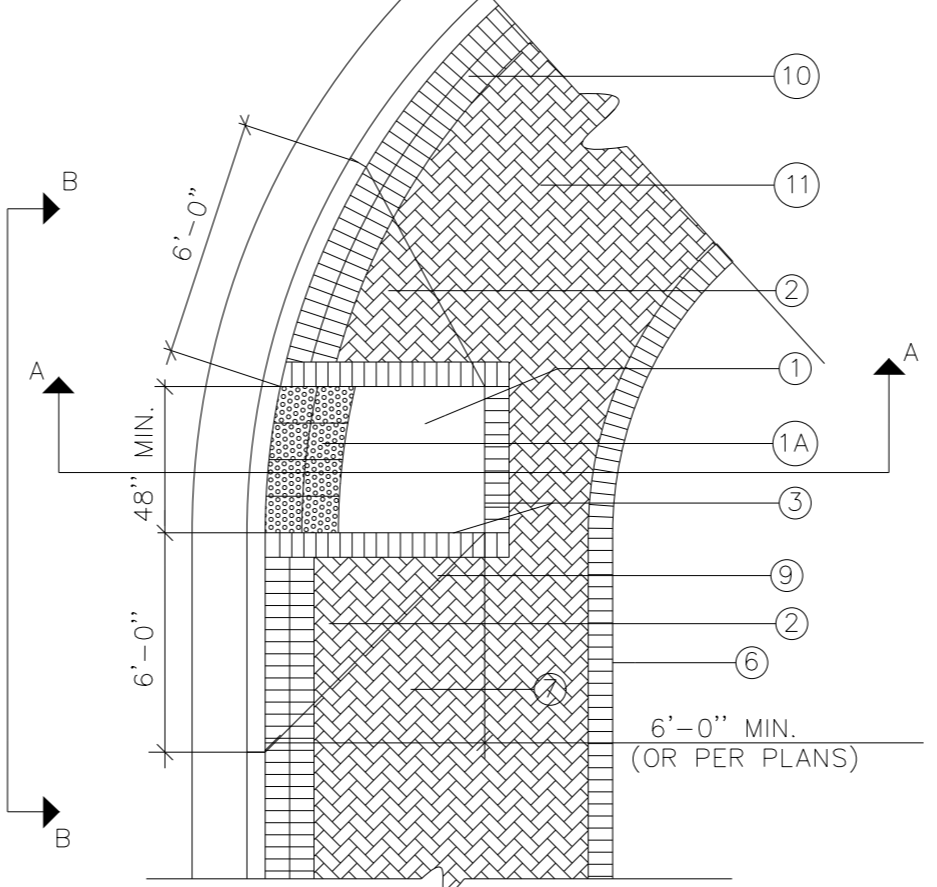
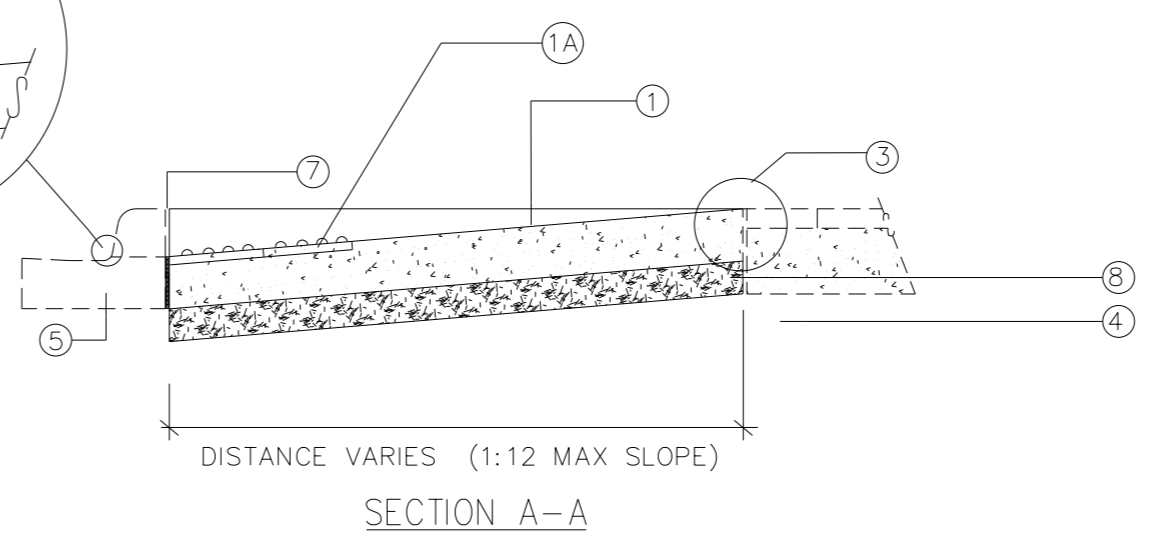
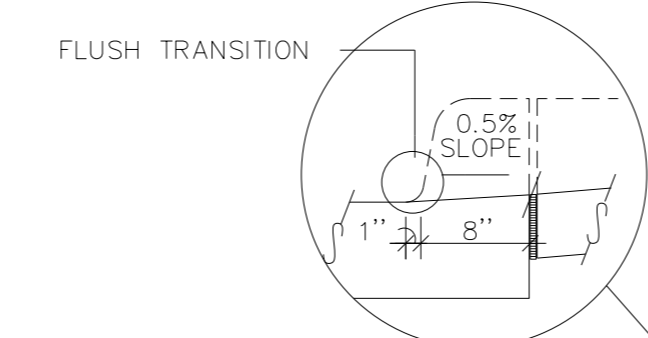
NOTE: REFER TO PEDESTRIAN CONCRETE FINISH DETAIL

PAVER SPECS:  
8" THICK  
STYLE: STONE TILE - STACKED STONE PATTERN  
CONCRETE: 4,000 PSI STRAIGHT CEMENT  
COLOR TO MIX IN TRUCK CHILI PEPPER (1 BAG PER CY)(QC PRODUCTS)  
COLOR HARDENER CHILI PEPPER (QC PRODUCTS)  
RELEASE STONE GRAY (QC PRODUCTS)  
CONCRETE RETARDER (IF NEEDED) FRITZ PACK  
SEALER MATTE FINISH (QC PRODUCTS)



4A HEAVY DUTY CONCRETE WALKWAY AT CONCRETE DRIVEWAY APRONS  
NOT TO SCALE

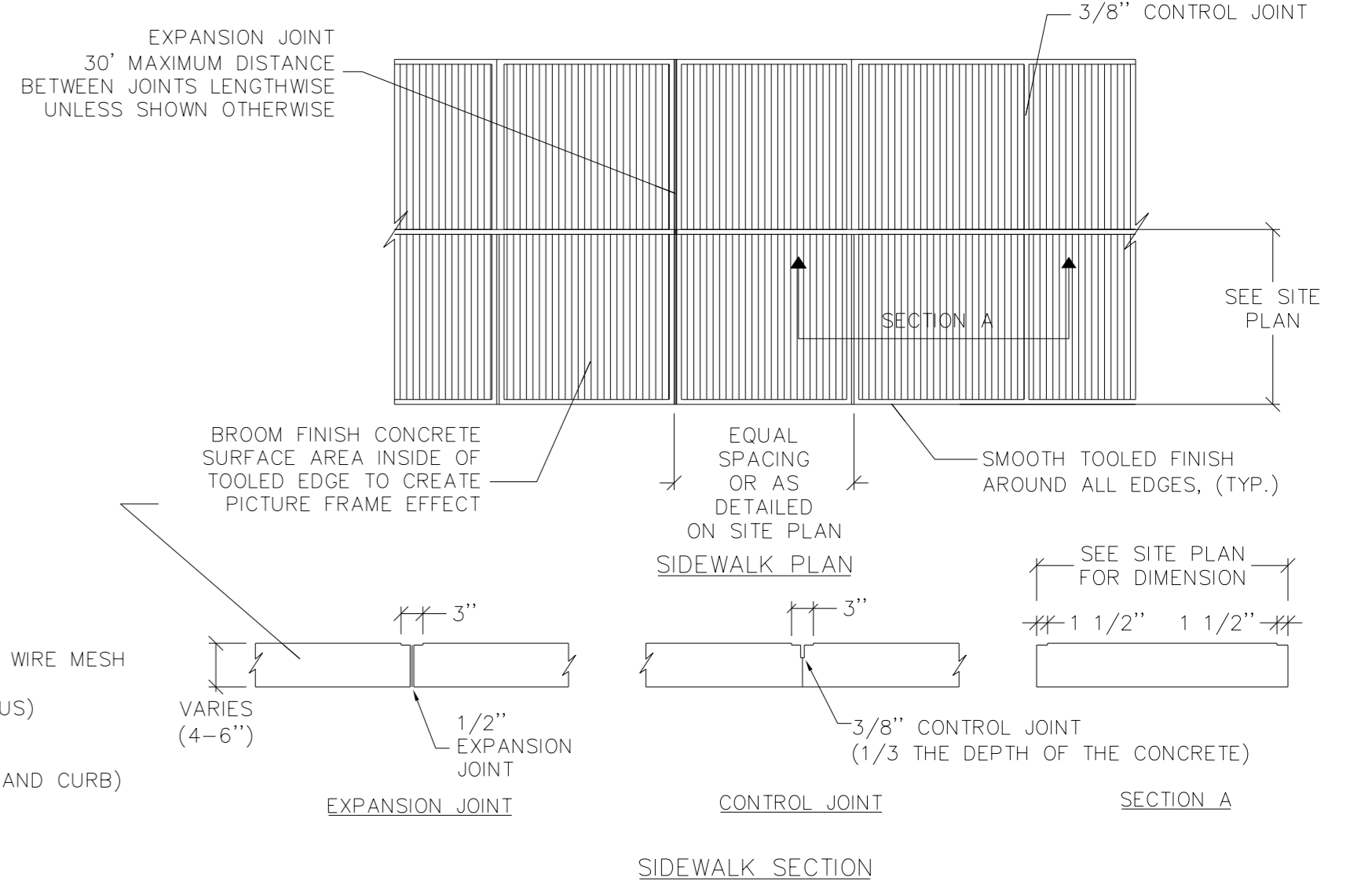
- 1 6" CONCRETE
- 2 COMPACTED SUB-GRADE
- 3 6" X 6" X W2.9 X W2.9 WELDED WIRE MESH
- 4 2 EACH - #4 REBAR (CONTINUOUS)
- 5 EXPANSION JOINT (BETWEEN CONCRETE SUB-SLAB AND CURB)
- 6 CONCRETE DRIVEWAY APRON (SEE ROADWAY PLANS)  
NOTE: REFER TO PEDESTRIAN CONCRETE FINISH DETAIL



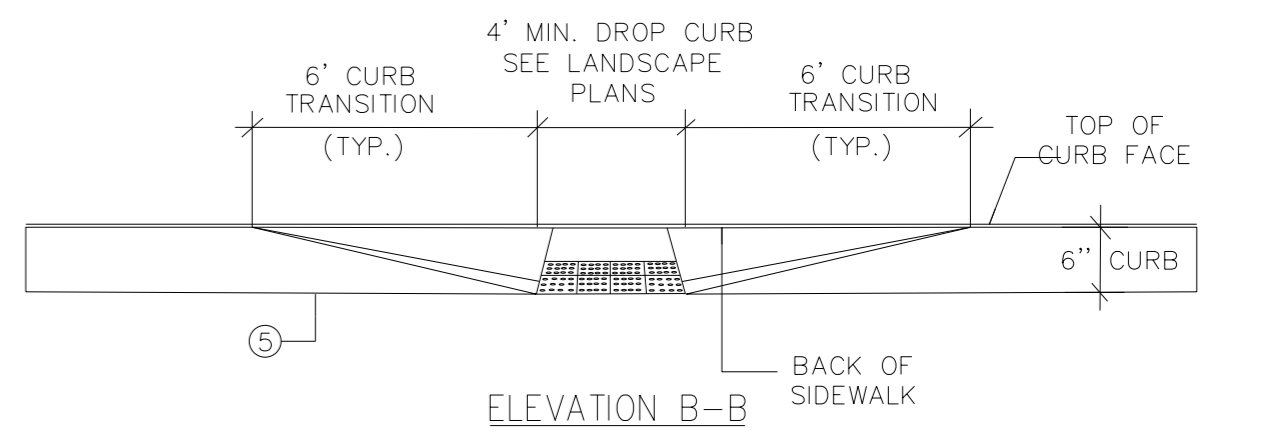
6 CONCRETE HANDICAP RAMP  
NOT TO SCALE

- 1 8" HEAVY DUTY CONCRETE HANDICAP RAMP (RAMP DOWN TOWARD STREET AT 12:1 MAX.)
- 1A ADA APPROVED POLYMER CONCRETE DETECABLE WARNING TILES TO BE PLACED IN A 2' BAND FROM BACK OF CURB-COLOR TO BE CHARCOAL GRAY (SEE NOTE B BELOW)
- 2 12:1 MAX SLOPES ON SIDE FLARES
- 3 RAMP TO PAVER FIELD TRANSITION
- 4 COMPACTED SUBGRADE
- 5 CURB AND GUTTER. (REF. TO ROADWAY PLANS)
- 6 EDGE OF WALK OR FACE OF BUILDING
- 7 EXPANSION JOINT
- 8 4" COMPACTED BASE COURSE
- 9 RAMP FLARE TRANSITION LINE
- 10 RED BORDER BRICK: SINGLE/DOUBLE SOLDIER COURSE MANUFACTURER: PINE HALL BRICK STYLE: ENGLISH EDGE-IRON SPOT
- 11 RED FIELD BRICK: 45 DEGREE HERRINGBONE PATTERN MANUFACTURER: PINE HALL BRICK STYLE: ENGLISH EDGER-FULL RANGE

GENERAL NOTES  
A. REFER TO ROADWAY PLANS FOR LOCATIONS OF CURB-CUT RAMPS.  
B. INSTALL TILES PER MANUFACTURERS RECOMMENDATIONS.  
C. TRANSITION CURB FROM FLUSH/DROP TO 6" STANDARD CURB SHALL BE 6'0" TYPICAL.



5 CONCRETE WALKWAY FINISH DETAIL  
NOT TO SCALE



TIME \$\$\$\$\$\$  
 DATE \$\$\$\$\$\$  
 CHECKED BY \$\$\$\$\$\$  
 FILE SPEC.: jhowerton/City of Durham Brick Pavers.dgn

PROFESSIONAL SEAL  
 022966  
 J. Howerton  
 879-301700049P...  
 11/16/2015

**CONTRACT STANDARDS AND DEVELOPMENT UNIT**  
 Office 919-707-6950 FAX 919-250-4119  
**BRICK PAVERS FOR SIDEWALK AND CURB RAMPS**  
 ORIGINAL BY: J. Howerton DATE: 1/26/15  
 MODIFIED BY: DATE:  
 CHECKED BY: DATE:  
 FILE SPEC.: jhowerton/City of Durham Brick Pavers.dgn