

NOTES

SIDEWALK IN THE SPAN SHALL NOT BE CAST UNTIL ALL SLAB CONCRETE IN THE SPAN HAS BEEN CAST AND HAS REACHED A MINIMUM COMPRESSIVE STRENGTH OF 3,000 PSI.

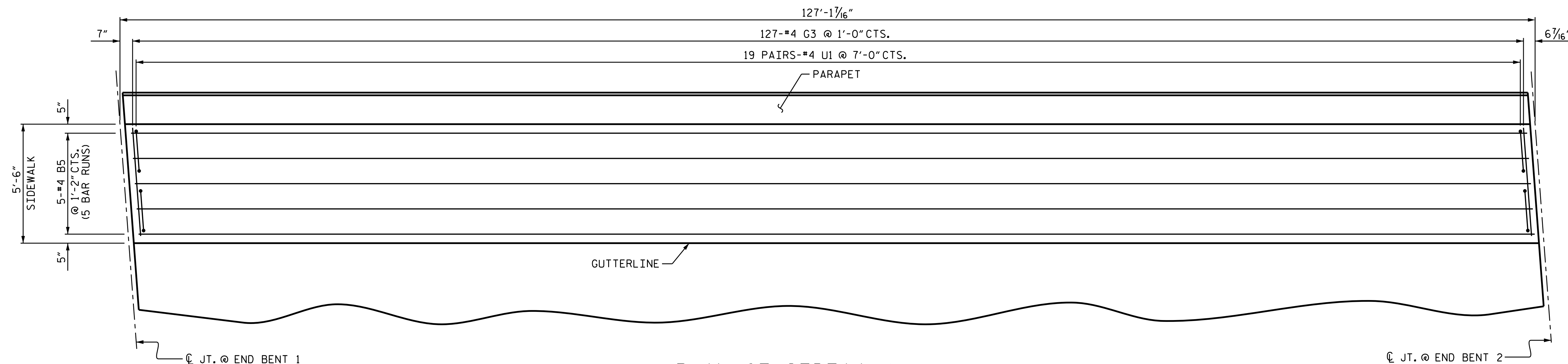
GROOVED CONTRACTION JOINTS, 1/2" IN DEPTH, SHALL BE TOOLED IN ALL EXPOSED FACES OF THE SIDEWALK IN ACCORDANCE WITH ARTICLE 825-10(B) OF THE STANDARD SPECIFICATIONS. THE CONTRACTION JOINTS SHALL BE LOCATED AT A SPACING OF 8 FT. TO 10 FT. BETWEEN EXPANSION JOINTS. NO CONTRACTION JOINT WILL BE REQUIRED FOR SEGMENTS LESS THAN 10 FT. IN LENGTH.

ALL REINFORCING STEEL IN THE SIDEWALK SHALL BE EPOXY COATED.

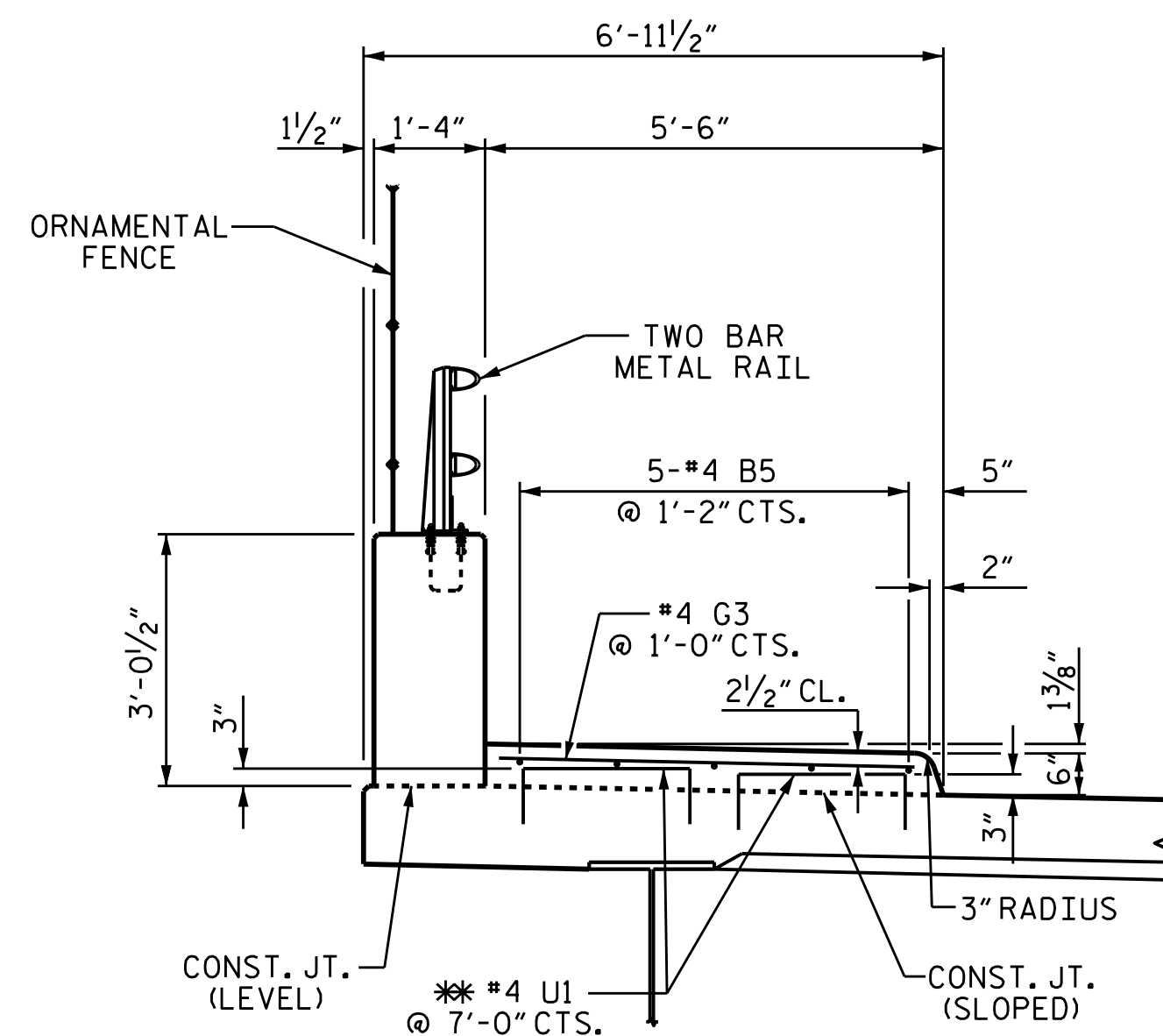
SEE "EXPANSION JOINT SEAL DETAILS FOR SIDEWALK" SHEETS FOR COVER PLATE DETAILS.

FOR SIDEWALK REINFORCING STEEL AND CONCRETE QUANTITIES, SEE SUPERSTRUCTURE "BILL OF MATERIAL."

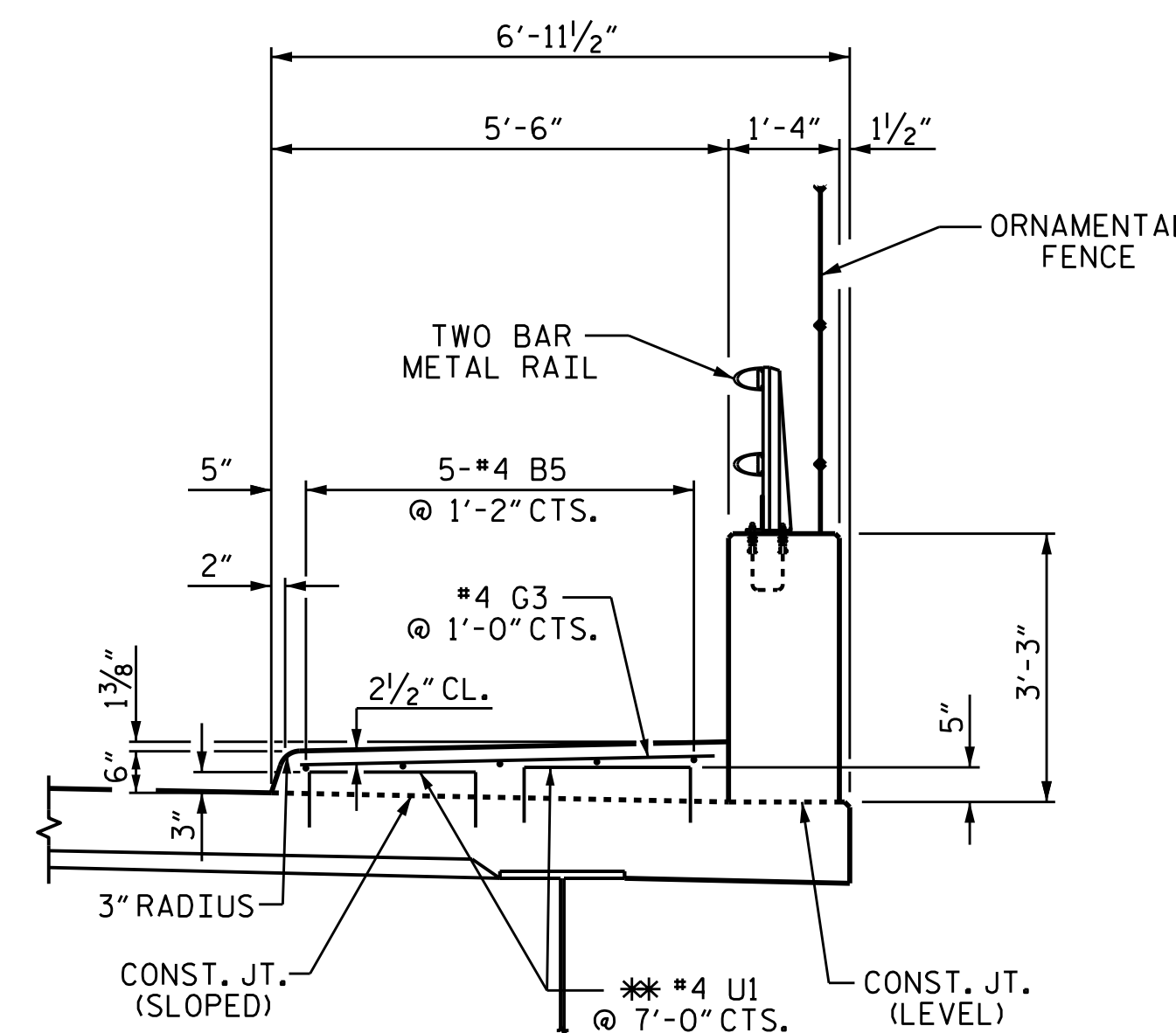
FOR SIDEWALK ON APPROACH SLAB, SEE APPROACH SLAB SHEETS.



PLAN OF SIDEWALK
STAGE I SIDEWALK SHOWN, STAGE II SIMILAR



SECTION THRU SIDEWALK
STAGE I



SECTION THRU SIDEWALK
STAGE II

** #4 U1 MAY BE PUSHED INTO GREEN CONCRETE AFTER SPAN HAS BEEN SCREEDED OFF

PROJECT NO. B-4490
CUMBERLAND COUNTY
STATION: 35+23.40 -L-



DocuSigned by:
W. Alford

3/29/2016

STATE OF NORTH CAROLINA
DEPARTMENT OF TRANSPORTATION
RALEIGH
SUPERSTRUCTURE
SIDEWALK DETAILS
STAGE I & STAGE II

DRAWN BY : I.L. AVERETTE DATE : 11-14
CHECKED BY : J.P. ADAMS DATE : 07-15
DESIGN ENGINEER OF RECORD: I.L. AVERETTE DATE : 09-15

DOCUMENT NOT CONSIDERED
FINAL UNLESS ALL
SIGNATURES COMPLETED

REVISIONS						SHEET NO.	
NO.	BY:	DATE:	NO.	BY:	DATE:	S-67	
1			3			TOTAL SHEETS	
2			4			84	