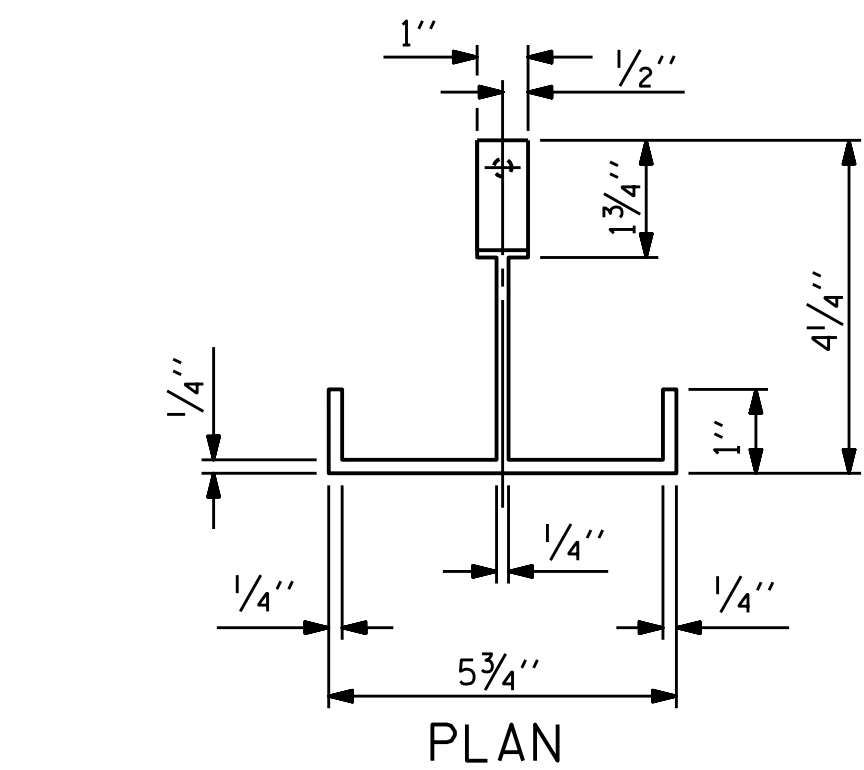
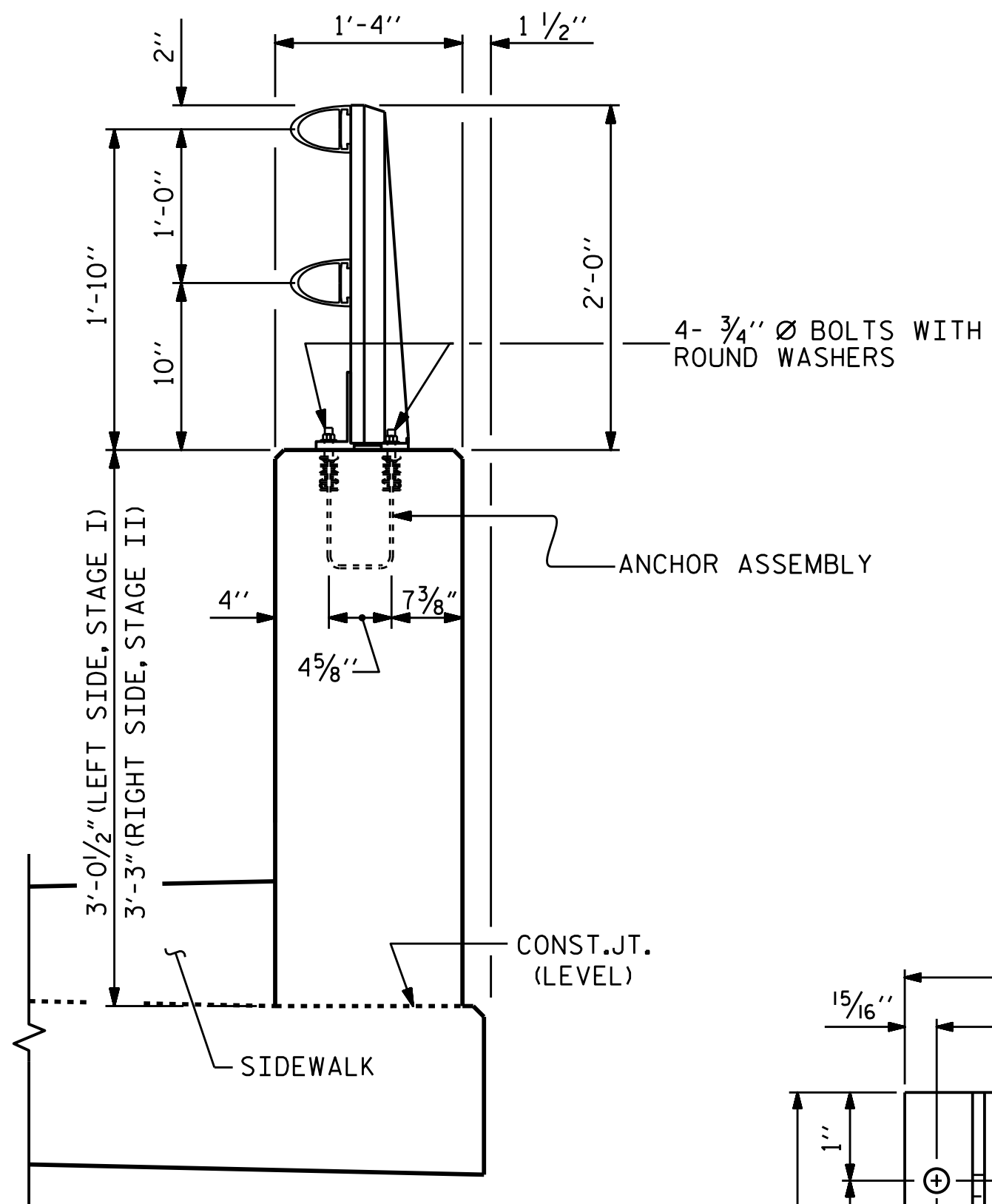


ELEVATION

NOTE : FOR ATTACHMENT OF METAL RAIL TO END POST, SEE STANDARD NO. BMR2.

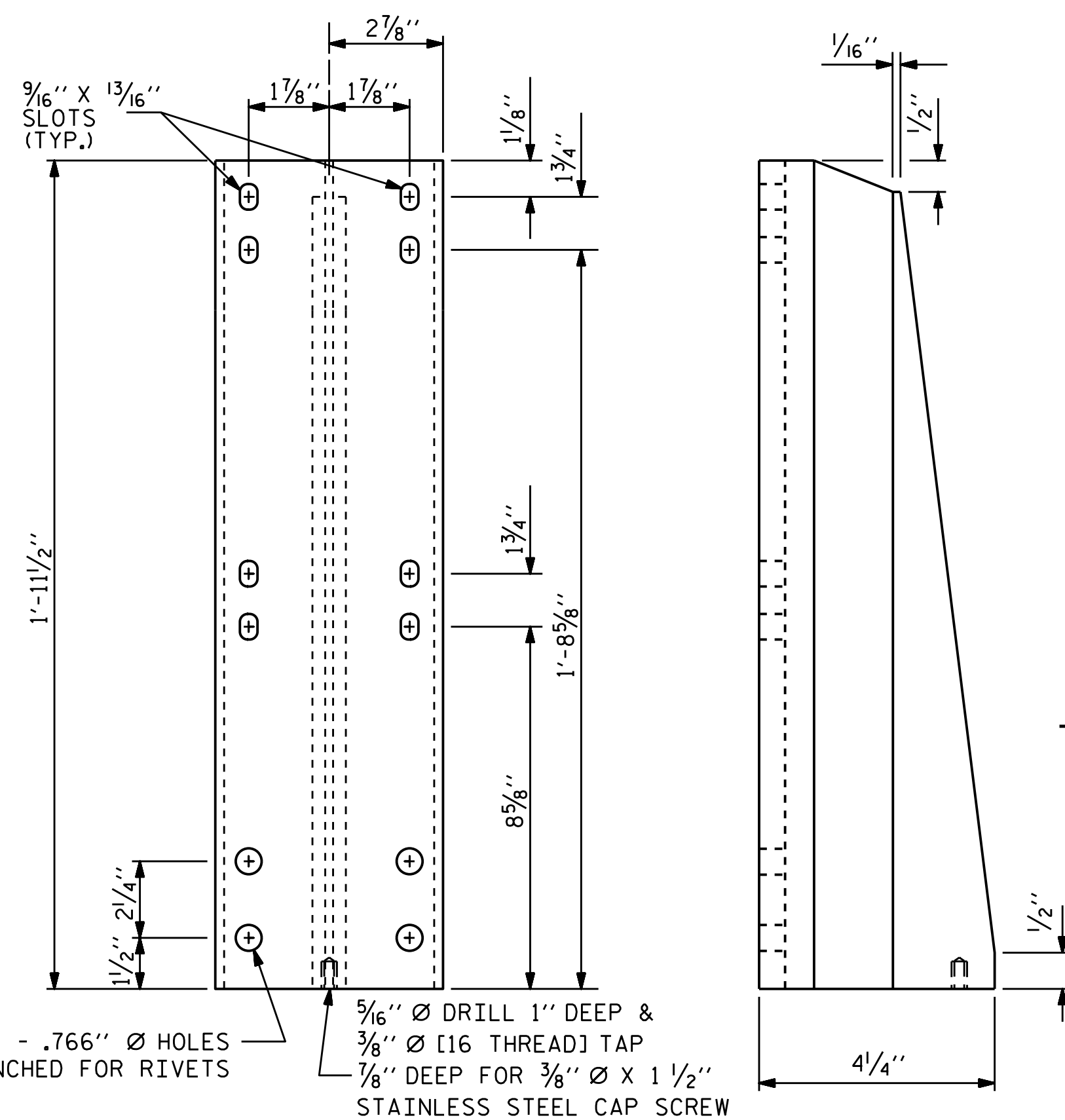


PLAN



SECTION THRU PARAPET AND RAIL

ORNAMENTAL FENCE NOT SHOWN FOR CLARITY. SEE "ORNAMENTAL FENCE DETAILS" SHEET.



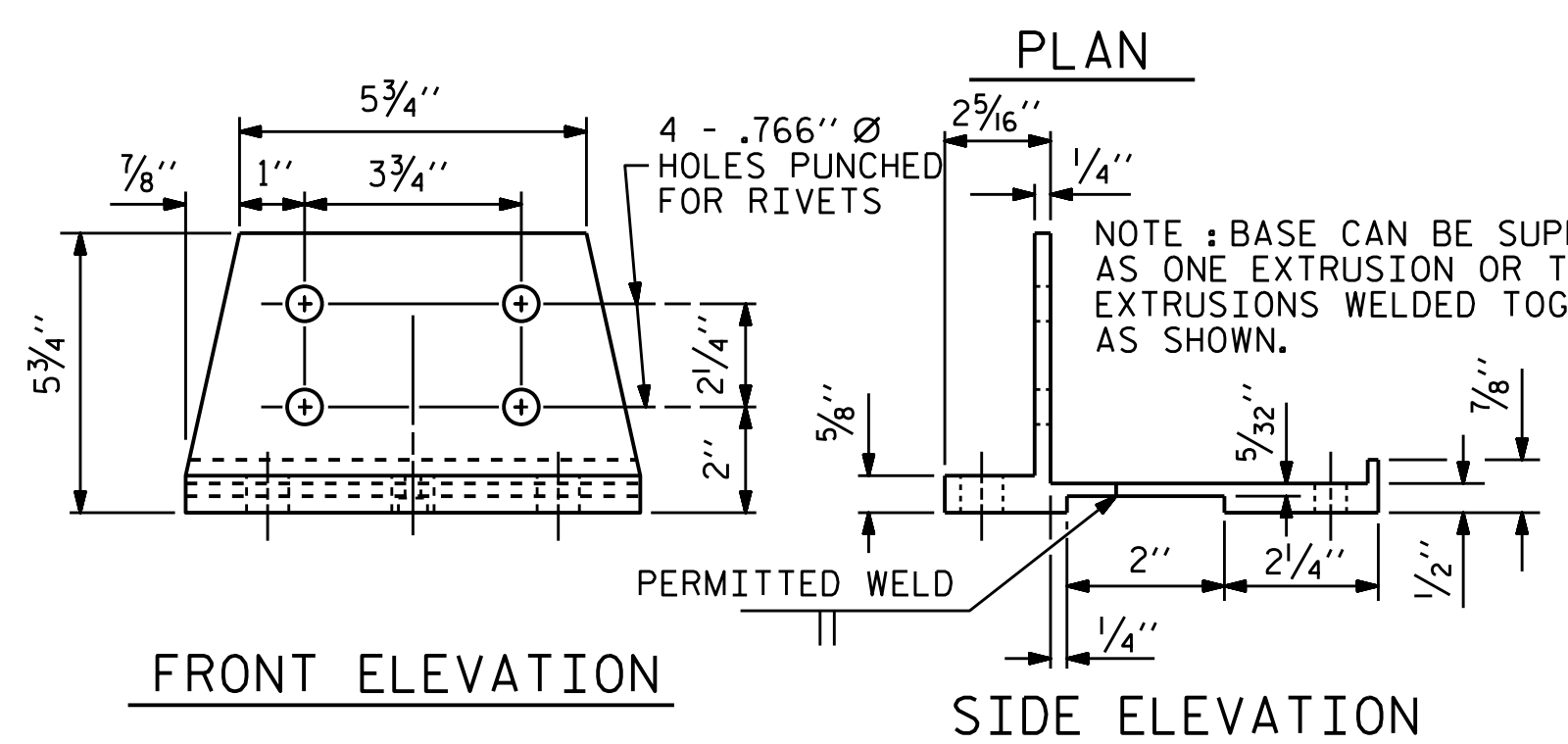
FRONT ELEVATION

SIDE ELEVATION

DETAILS OF POST

ASSEMBLED BY : T.L. AVERETTE	DATE : 02/15
CHECKED BY : J.P. ADAMS	DATE : 07/15
DRAWN BY : EEM 6/94	REV. 5/1/06 TLA/GM
CHECKED BY : RGW 6/94	REV. 10/1/11 MAA/GM
	REV. 6/13 MAA/GM

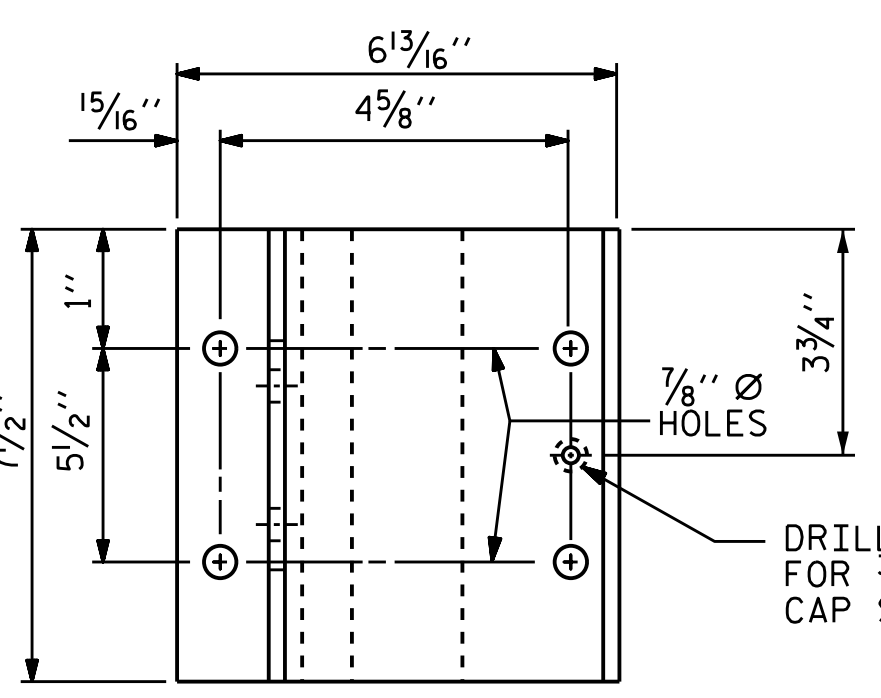
29-MAR-2016 09:20
R:\Structures\Plans\STR 2\SUPERSTRUCTURE\B4490_SD_2MR.dgn
jpodoms



FRONT ELEVATION

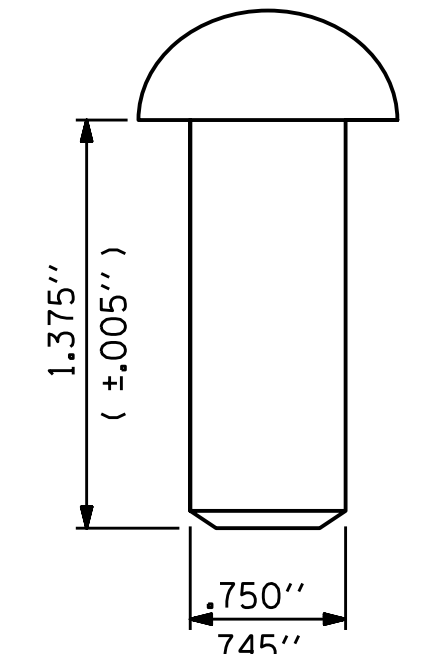
SIDE ELEVATION

POST BASE DETAILS



PLAN

NOTE : BASE CAN BE SUPPLIED AS ONE EXTRUSION OR TWO EXTRUSIONS WELDED TOGETHER AS SHOWN.



RIVET DETAIL



DocuSigned by:
T. W. Alford
F24583800BF40E...
3/29/2016

NOTES

ALUMINUM RAILS

MATERIAL FOR POSTS, BASES AND RAILS, EXPANSION BARS AND CLAMP BARS SHALL BE ASTM B-221 ALLOY 6061-T6. MATERIAL FOR RIVETS SHALL BE ASTM B316 ALLOY 6061-T6. RIVETS SHALL BE STANDARD BUTTON HEAD AND CONE POINT COLD DRIVEN AS PER DRAWING.

THE BASE OF RAIL POSTS, OR ANY OTHER ALUMINUM SURFACE IN CONTACT WITH CONCRETE SHALL BE THOROUGHLY COATED WITH AN ALUMINUM IMPREGNATED CAULKING COMPOUND OF APPROVED QUALITY.

MATERIAL FOR SHIMS TO BE ASTM B209 ALLOY 6061-T6.

ANODIZING

ALUMINUM FOR POSTS, BASES, RAILS, EXPANSION BARS, RIVETS, CAPS, AND SHIMS SHALL BE ANODIZED. THE CONTRACTOR SHALL SUBMIT THREE (3) SETS OF ASTM B-21 6061-T6 ALUMINUM SAMPLES ANODIZED BLACK TO THE ENGINEER. THE ENGINEER SHALL SELECT THE COLOR FROM THE SAMPLES FURNISHED BY THE CONTRACTOR TO MOST CLOSELY MATCH THE COLOR OF THE ORNAMENTAL FENCE.

ANY DAMAGE TO THE ANODIZED SURFACE OF THE RAIL OR COMPONENTS DURING THE CONSTRUCTION SHALL BE REPAIRED ACCORDING TO THE MANUFACTURER'S INSTRUCTIONS AT THE DIRECTION OF THE ENGINEER AND AT THE CONTRACTOR'S EXPENSE.

AFTER A SHADE OF BLACK HAS BEEN SELECTED FOR THE RAILING, THE CONTRACTOR SHALL SUBMIT A SAMPLE OF COMPATIBLE EXTERIOR ACRYLIC HOUSE PAINT TO THE ENGINEER. THIS PAINT SHALL MATCH THE ANODIZED RAIL COLOR AS CLOSELY AS POSSIBLE. AFTER ERECTION OF THE ANODIZED ALUMINUM RAILING, ALL EXPOSED ANCHOR BOLTS, NUTS, WASHERS, MACHINE SCREWS, CAP SCREWS, BOLTS, ATTACHMENT BRACKETS, HOLD-DOWN PLATES, AND BUILT UP ANGLES SHALL BE COATED WITH TWO COATS OF THIS PAINT.

GENERAL NOTES

RAILING SHALL BE CONTINUOUS FROM END POST TO END POST OF BRIDGE. EACH JOINT IN RAIL LENGTH SHALL BE SPLICED AS DETAILED. PANEL LENGTHS OF RAIL SHALL BE ATTACHED TO A MINIMUM OF THREE POSTS.

FOR END OF RAIL TO CLEAR FACE OF CONCRETE END POST DIMENSION, SEE STANDARD NO. BMR2.

CAP SCREWS SHALL BE ASTM F593 ALLOY 305 STAINLESS STEEL. WASHERS SHALL MEET THE REQUIREMENTS OF ASTM F844 EXCEPT THEY SHALL BE MADE FROM ALLOY 304 STAINLESS STEEL.

CERTIFIED MILL REPORTS ARE REQUIRED FOR RAILS AND POSTS. SHOP INSPECTION IS NOT REQUIRED.

METAL RAIL POSTS SHALL BE SET NORMAL TO CURB GRADE.

METHOD OF MEASUREMENT FOR METAL RAILS: FOR LENGTH OF METAL RAILS TO BE PAID FOR, SEE THE STANDARD SPECIFICATIONS.

CURVED RAIL USAGE: WHERE RAILS ARE TO BE USED ON BRIDGES ON HORIZONTAL AND/OR VERTICAL CURVATURE THE CONTRACTOR MAY, AT HIS OPTION, HAVE THE REQUIRED CURVATURE IN THE RAIL FORMED IN THE SHOP OR IN THE FIELD. IN EITHER EVENT, THE RAIL SHALL CONFORM WITHOUT BUCKLING OR KINKING TO THE REQUIRED CURVATURE IN A UNIFORM MANNER ACCEPTABLE TO THE ENGINEER.

TO INSURE FUTURE IDENTIFICATION OF THE FABRICATOR, A PERMANENT IDENTIFYING MARK SHALL BE PLACED ON EACH POST. THE METHOD OF MARKING AND LOCATION SHALL BE SUCH THAT IT DOES NOT DETRACT FROM THE APPEARANCE OF THE POST, BUT REMAINS VISIBLE AFTER RAIL PLACEMENT.

SHIMS SHALL BE USED AS NECESSARY FOR POST ALIGNMENT.

ALLOY 6351-T5 MAY BE SUBSTITUTED FOR ALLOY 6061-T6 WHERE APPLICABLE.

MINOR VARIATIONS IN DETAILS OF METAL RAIL WILL BE CONSIDERED. DETAILS OF SUCH VARIATIONS, IF DESIRED, SHALL BE SUBMITTED FOR APPROVAL.

GROOVED CONTRACTION JOINTS, 1/2" IN DEPTH, SHALL BE TOOLED IN ALL EXPOSED FACES OF THE PARAPET AND IN ACCORDANCE WITH ARTICLE 825-10(B) OF THE STANDARD SPECIFICATIONS. A CONTRACTION JOINT SHALL BE LOCATED AT EACH THIRD POINT BETWEEN PARAPET EXPANSION JOINTS. ONLY ONE CONTRACTION JOINT IS REQUIRED AT MIDPOINT OF PARAPET SEGMENTS LESS THAN 20 FEET IN LENGTH AND NO CONTRACTION JOINTS ARE REQUIRED FOR THOSE SEGMENTS LESS THAN 10 FEET IN LENGTH.

PAY LENGTH = 238.8 LIN. FT.

PROJECT NO. B-4490
CUMBERLAND COUNTY
STATION: 35+23.40 -L-

SHEET 1 OF 3

STATE OF NORTH CAROLINA
DEPARTMENT OF TRANSPORTATION
RALEIGH

2 BAR METAL RAIL

REVISIONS						SHEET NO.
NO.	BY:	DATE:	NO.	BY:	DATE:	S-59
1			3			TOTAL SHEETS 84
2			4			

STR. #2

STD. NO. BMR3