

-L-
 PI Sta 32+53.30
 $\Delta = 8' 38' 25.1''$ (RT)
 $D = 4' 05' 33.2''$
 $L = 211.2'$
 $T = 105.76'$
 $R = 1,400.00'$
 $DS = 40$ MPH
 $SE = 2.0\%$
 $RO = 100'$

-Y7-
 PI Sta 18+02.27
 $\Delta = 46' 34' 26.5''$ (LT)
 $D = 9' 14' 28.5''$
 $L = 503.98'$
 $T = 266.85'$
 $R = 620.00'$

* REQUIRES DESIGN EXCEPTION

Prepared by:
AECOM
 AECOM TECHNICAL SERVICES OF NORTH CAROLINA, INC.
 701 CORPORATE CENTER DRIVE, SUITE 475, RALEIGH, NC 27607
 919-854-8200 919-854-8259 (fax)
 F - 0342

PROJECT REFERENCE NO. **B-4490** SHEET NO. **UC-9**

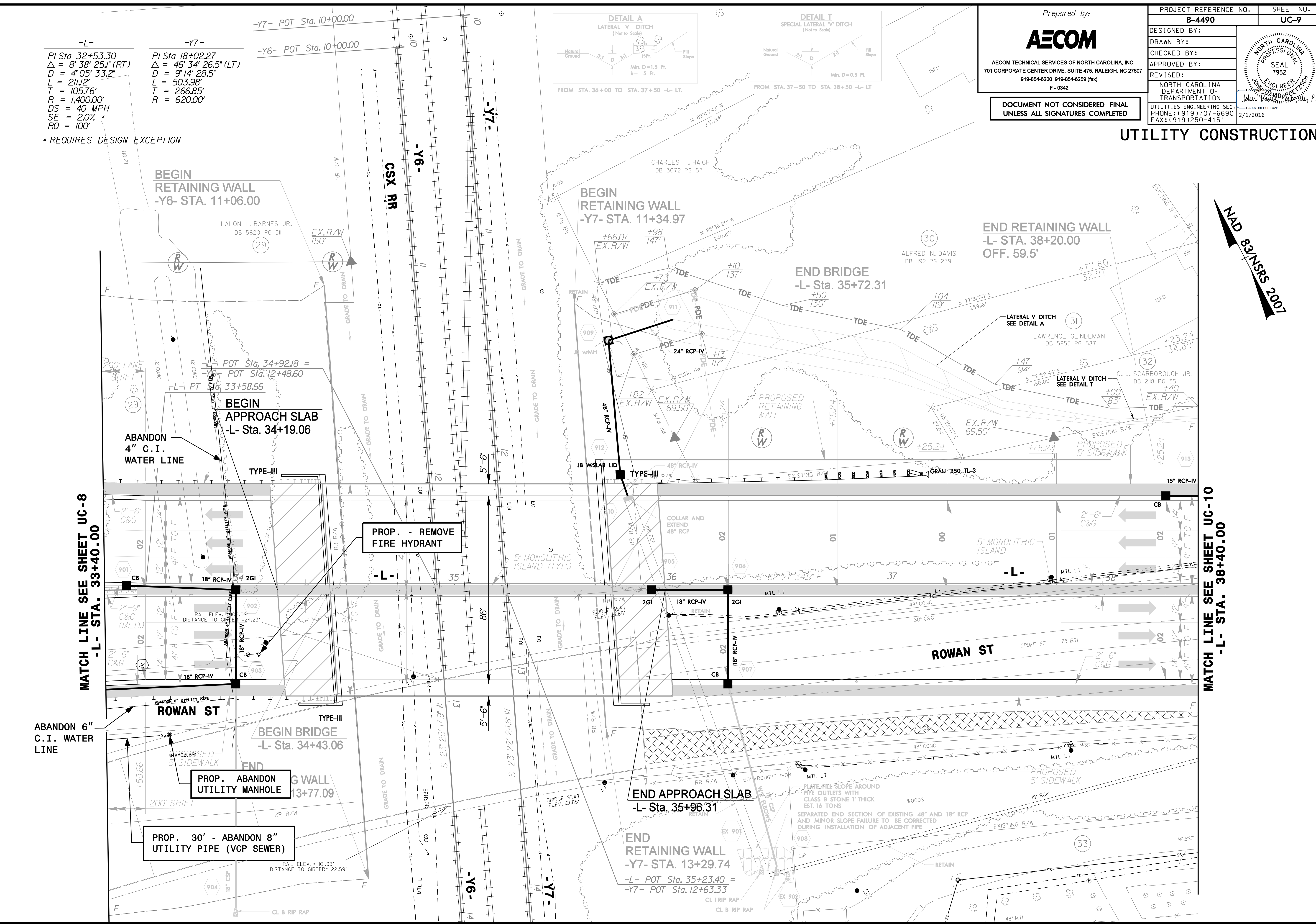
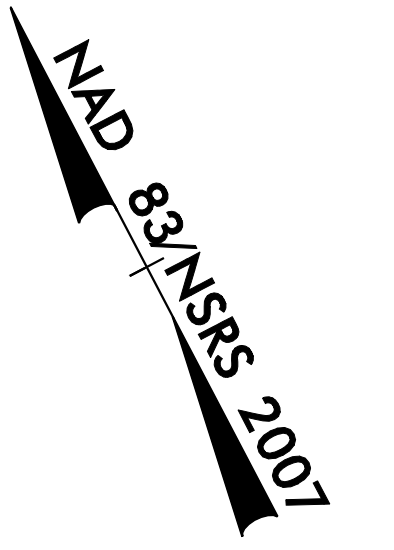
DESIGNED BY:
 DRAWN BY:
 CHECKED BY:
 APPROVED BY:
 REVISED:

NORTH CAROLINA PROFESSIONAL SEAL 7952

ENGINEER: JOHN VAN DYKE, P.E.
 NORTH CAROLINA DEPARTMENT OF TRANSPORTATION
 UTILITIES ENGINEERING SEC.
 PHONE: (919) 707-6690
 FAX: (919) 250-4151
 2/1/2016

DOCUMENT NOT CONSIDERED FINAL UNLESS ALL SIGNATURES COMPLETED

UTILITY CONSTRUCTION



MATCH LINE SEE SHEET UC-8
-L- STA. 33+40.00

MATCH LINE SEE SHEET UC-10
-L- STA. 38+40.00