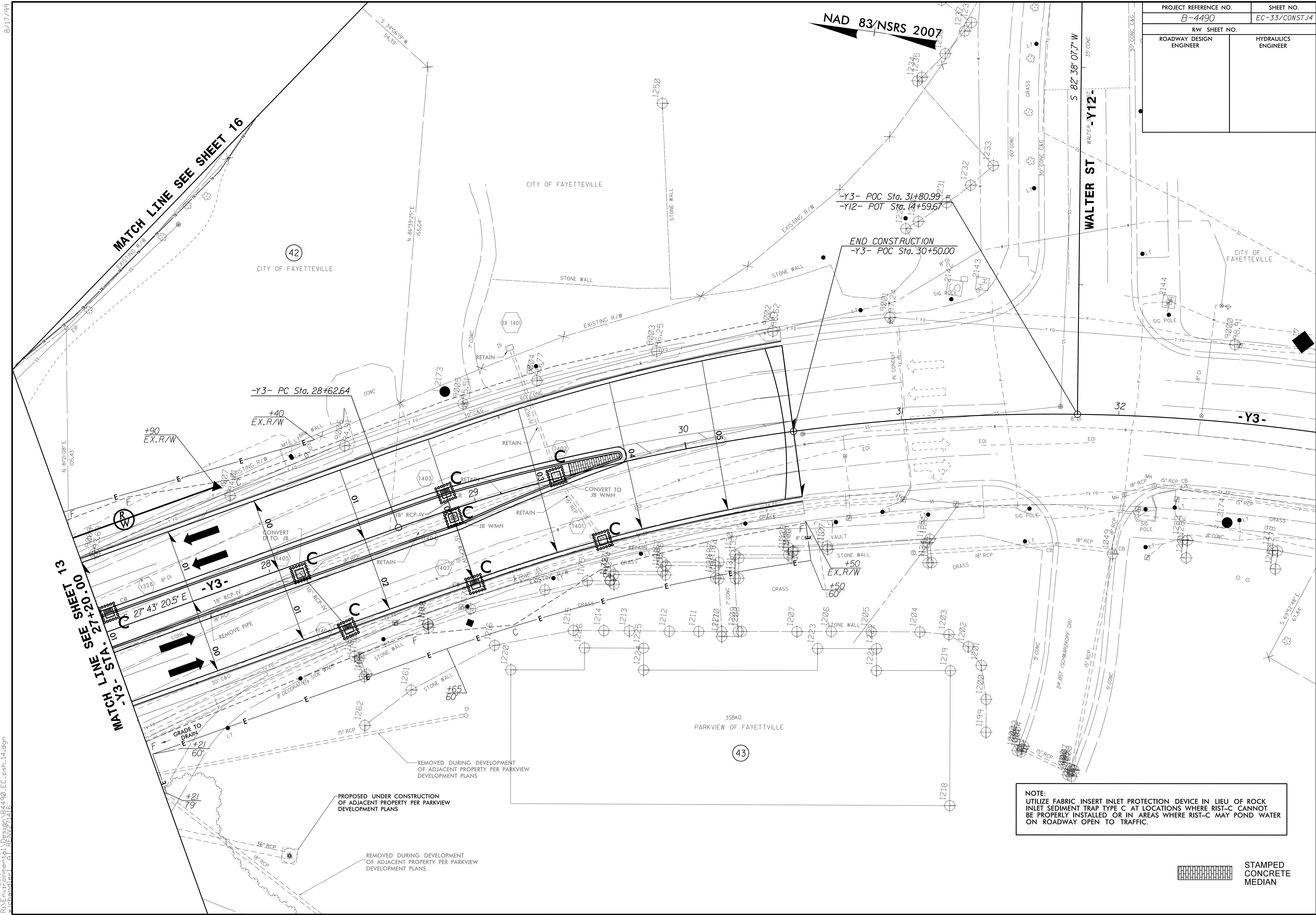


PROJECT REFERENCE NO.		SHEET NO.	
B-4490		EC-33/CONST.14	
RW SHEET NO.			
ROADWAY DESIGN ENGINEER		HYDRAULICS ENGINEER	



NOTE:  
 UTILIZE FABRIC INSERT INLET PROTECTION DEVICE IN LIEU OF ROCK INLET SEDIMENT TRAP TYPE C. AT LOCATIONS WHERE RIST-C CANNOT BE PROPERLY INSTALLED OR IN AREAS WHERE RIST-C MAY POND WATER ON ROADWAY OPEN TO TRAFFIC.

STAMPED  
 CONCRETE  
 MEDIAN

8/17/99  
 14-MAR-2016 14:45  
 R:\Projects\15\Design\B4490-EC.psh.14.dgn  
 R:\Projects\15\Design\B4490-EC.psh.14.dgn  
 R:\Projects\15\Design\B4490-EC.psh.14.dgn