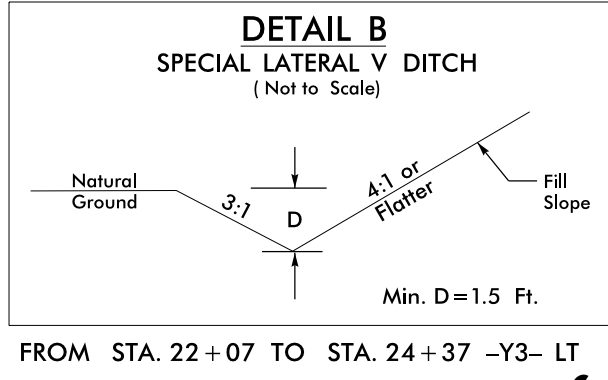
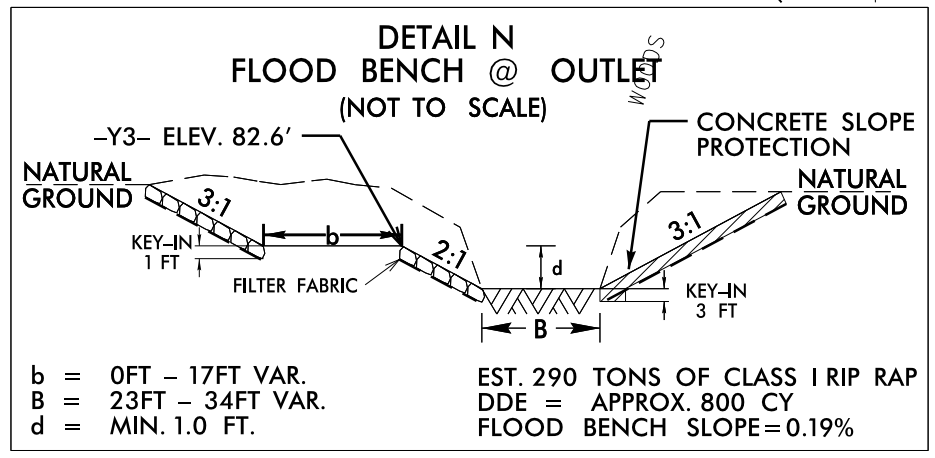


PROJECT REFERENCE NO.	SHEET NO.
B-4490	EC-32/CONST.13
RW SHEET NO.	
ROADWAY DESIGN ENGINEER	HYDRAULICS ENGINEER



NOTE:
UTILIZE FABRIC INSERT INLET PROTECTION DEVICE IN LIEU OF ROCK INLET SEDIMENT TRAP TYPE C AT LOCATIONS WHERE RIST-C CANNOT BE PROPERLY INSTALLED OR IN AREAS WHERE RIST-C MAY POND WATER ON ROADWAY OPEN TO TRAFFIC.



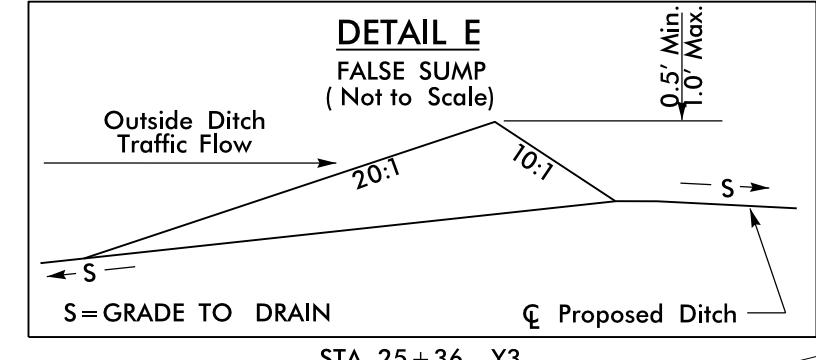
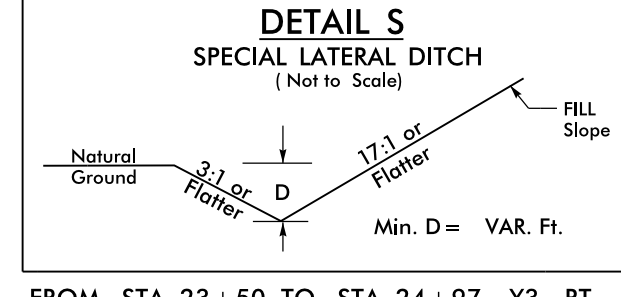
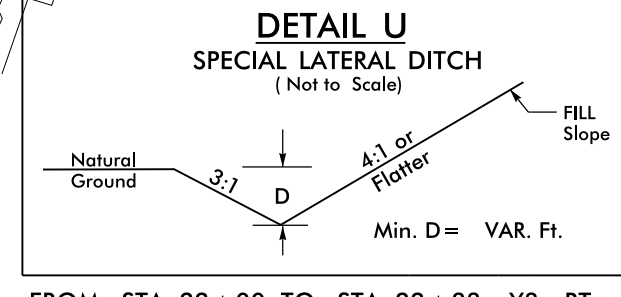
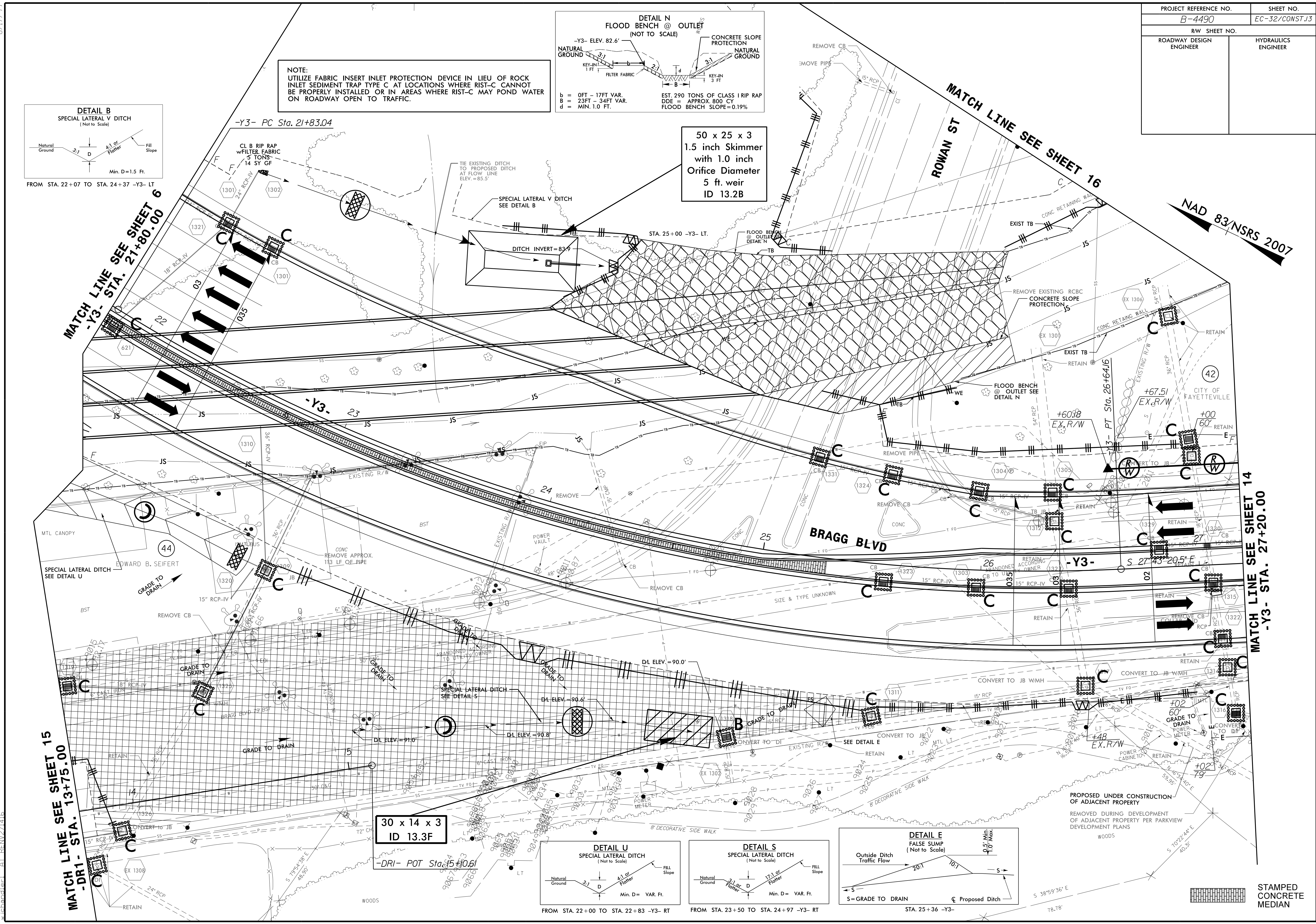
50 x 25 x 3
1.5 inch Skimmer
with 1.0 inch
Orifice Diameter
5 ft. weir
ID 13.2B

FROM STA. 22+07 TO STA. 24+37 -Y3- LT

MATCH LINE SEE SHEET 6
-Y3- STA. 21+80.00

MATCH LINE SEE SHEET 15
-DR1- STA. 13+75.00

MATCH LINE SEE SHEET 14
-Y3- STA. 27+20.00



30 x 14 x 3
ID 13.3F

FROM STA. 22+00 TO STA. 22+83 -Y3- RT

FROM STA. 23+50 TO STA. 24+97 -Y3- RT

STA. 25+36 -Y3-

STAMPED CONCRETE MEDIAN

8/17/99
14-MAR-2016 14:37
R:\NEW\proj\1321\Design\B4490-EC-psd-13.dgn
w:\stand\ec\13