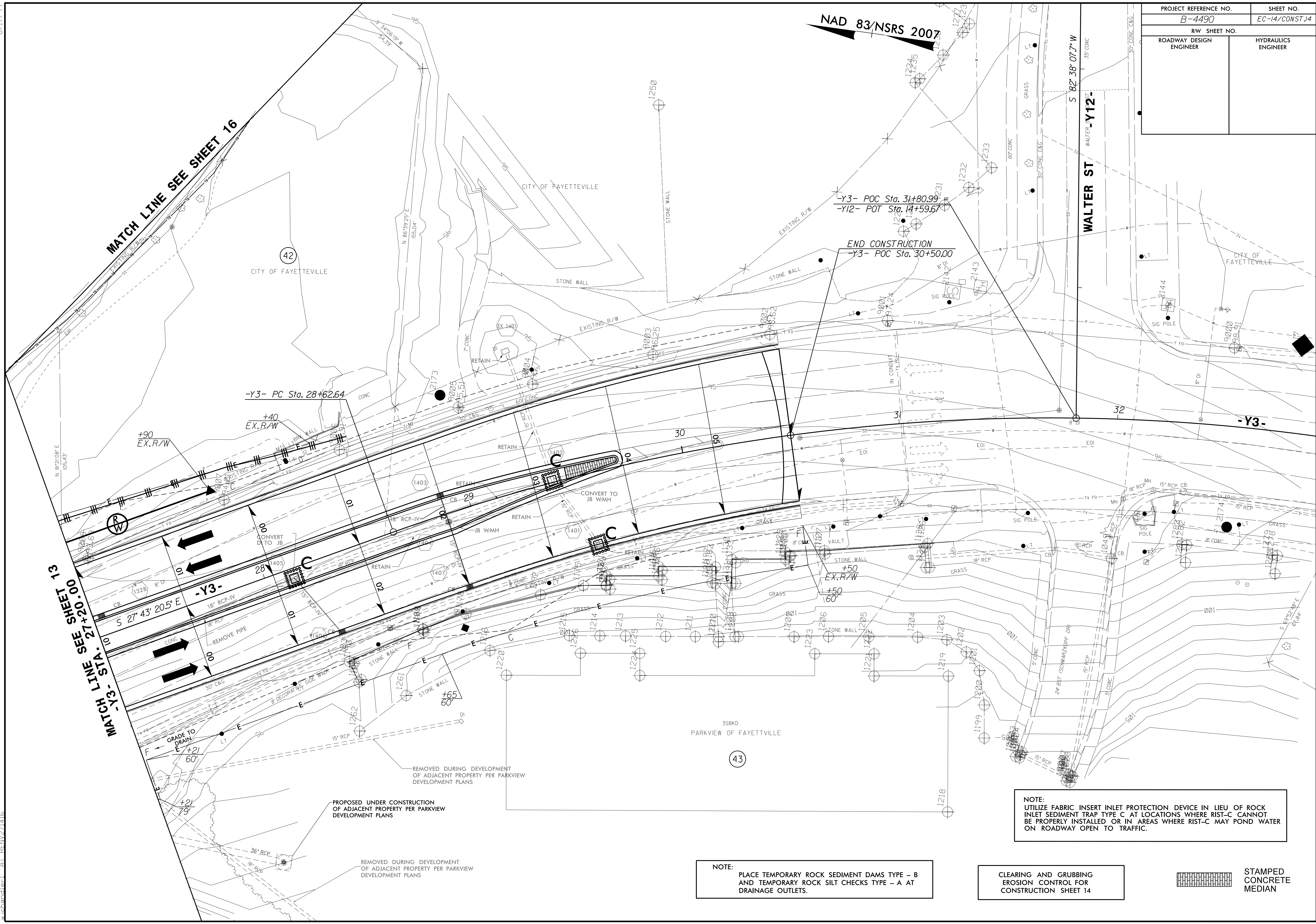


8.17.99
 14-MAR-2016 14:44
 R:\Projects\14444\Design\B4490-EC.psh.14.dgn
 R:\Projects\14444\Design\B4490-EC.psh.14.dgn
 R:\Projects\14444\Design\B4490-EC.psh.14.dgn

PROJECT REFERENCE NO.	SHEET NO.
B-4490	EC-14/CONST.14
RW SHEET NO.	
ROADWAY DESIGN ENGINEER	HYDRAULICS ENGINEER



MATCH LINE SEE SHEET 16

MATCH LINE SEE SHEET 13
 STA. 27+20.00

NAD 83/NSRS 2007

WALTER ST
 S 82° 38' 07.7" W

END CONSTRUCTION
 -Y3- POC Sta. 30+50.00
 -Y12- POT Sta. 14+59.67

-Y3- PC Sta. 28+62.64

-Y3-

-Y3-

REMOVED DURING DEVELOPMENT OF ADJACENT PROPERTY PER PARKVIEW DEVELOPMENT PLANS

PROPOSED UNDER CONSTRUCTION OF ADJACENT PROPERTY PER PARKVIEW DEVELOPMENT PLANS

REMOVED DURING DEVELOPMENT OF ADJACENT PROPERTY PER PARKVIEW DEVELOPMENT PLANS

NOTE:
 PLACE TEMPORARY ROCK SEDIMENT DAMS TYPE - B AND TEMPORARY ROCK SILT CHECKS TYPE - A AT DRAINAGE OUTLETS.

CLEARING AND GRUBBING EROSION CONTROL FOR CONSTRUCTION SHEET 14

NOTE:
 UTILIZE FABRIC INSERT INLET PROTECTION DEVICE IN LIEU OF ROCK INLET SEDIMENT TRAP TYPE C, AT LOCATIONS WHERE RIST-C CANNOT BE PROPERLY INSTALLED OR IN AREAS WHERE RIST-C MAY POND WATER ON ROADWAY OPEN TO TRAFFIC.



STAMPED CONCRETE MEDIAN