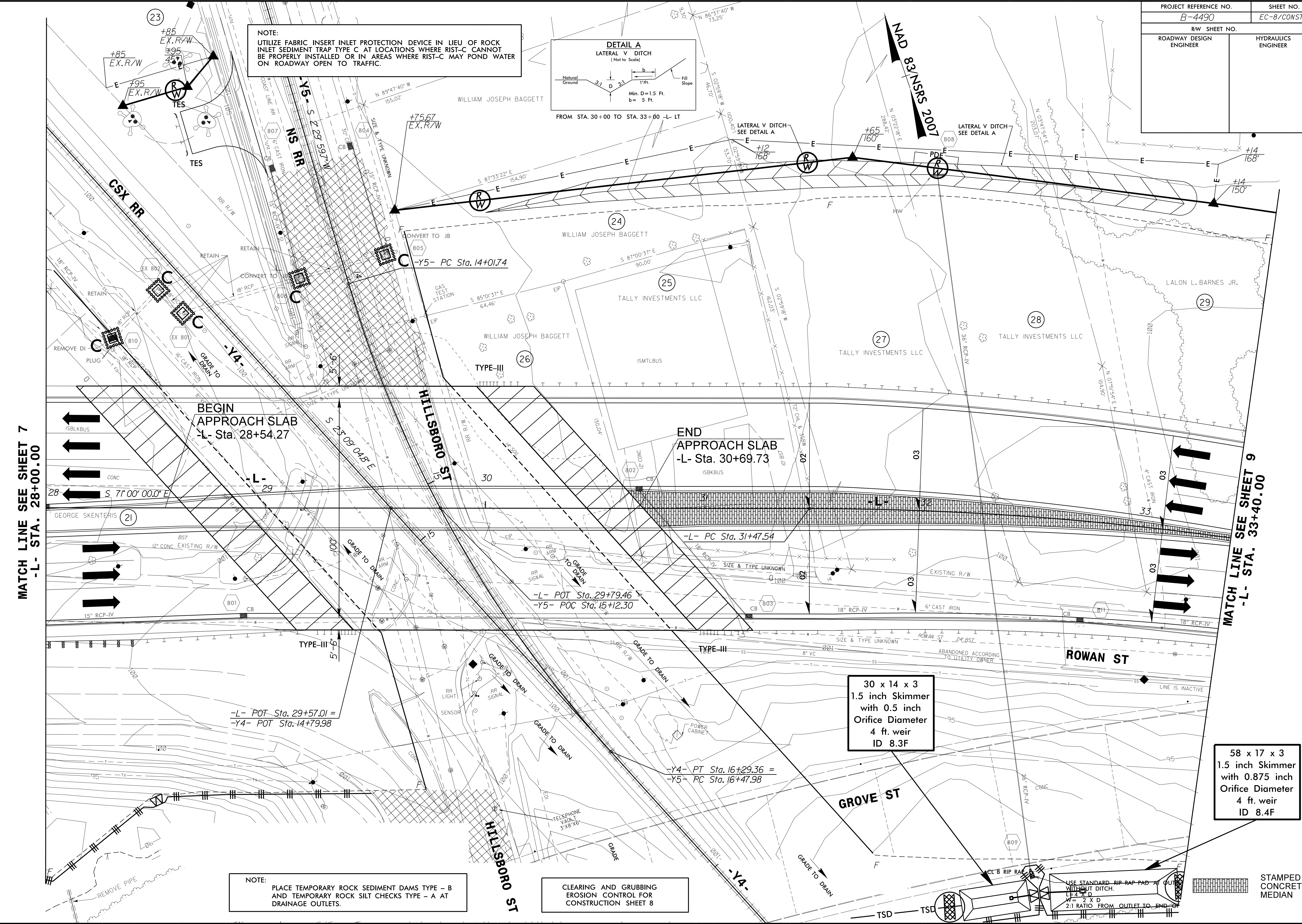
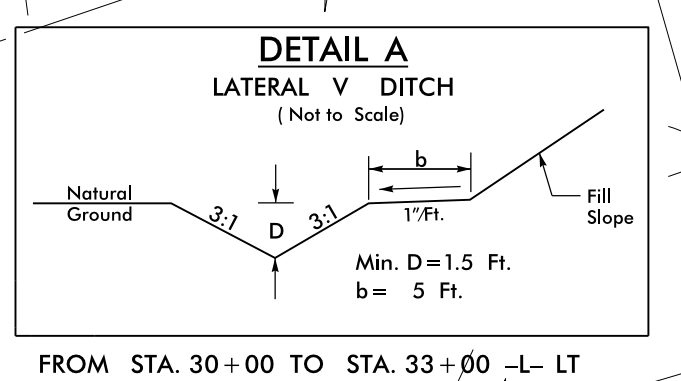


PROJECT REFERENCE NO. B-4490	SHEET NO. EC-B/CONST.8
RW SHEET NO.	
ROADWAY DESIGN ENGINEER	HYDRAULICS ENGINEER

NOTE:
UTILIZE FABRIC INSERT INLET PROTECTION DEVICE IN LIEU OF ROCK INLET SEDIMENT TRAP TYPE C AT LOCATIONS WHERE RIST-C CANNOT BE PROPERLY INSTALLED OR IN AREAS WHERE RIST-C MAY POND WATER ON ROADWAY OPEN TO TRAFFIC.



MATCH LINE SEE SHEET 7
-L- STA. 28+00.00

MATCH LINE SEE SHEET 9
-L- STA. 33+40.00

BEGIN
APPROACH SLAB
-L- Sta. 28+54.27

END
APPROACH SLAB
-L- Sta. 30+69.73

30 x 14 x 3
1.5 inch Skimmer
with 0.5 inch
Orifice Diameter
4 ft. weir
ID 8.3F

58 x 17 x 3
1.5 inch Skimmer
with 0.875 inch
Orifice Diameter
4 ft. weir
ID 8.4F

NOTE:
PLACE TEMPORARY ROCK SEDIMENT DAMS TYPE - B AND TEMPORARY ROCK SILT CHECKS TYPE - A AT DRAINAGE OUTLETS.

CLEARING AND GRUBBING
EROSION CONTROL FOR
CONSTRUCTION SHEET 8

USE STANDARD RIP RAP PAD AT OUTLET WITHOUT DITCH.
LE4 2' D
W = 2 X D
2:1 RATIO FROM OUTLET TO END OF

STAMPED
CONCRETE
MEDIAN

8/17/99
3-AUG-2015 15:48
R:\Projects\B4490\Drawings\B4490-EC.pch_08.dgn
R:\Projects\B4490\Drawings\B4490-EC.pch_08.dgn
R:\Projects\B4490\Drawings\B4490-EC.pch_08.dgn