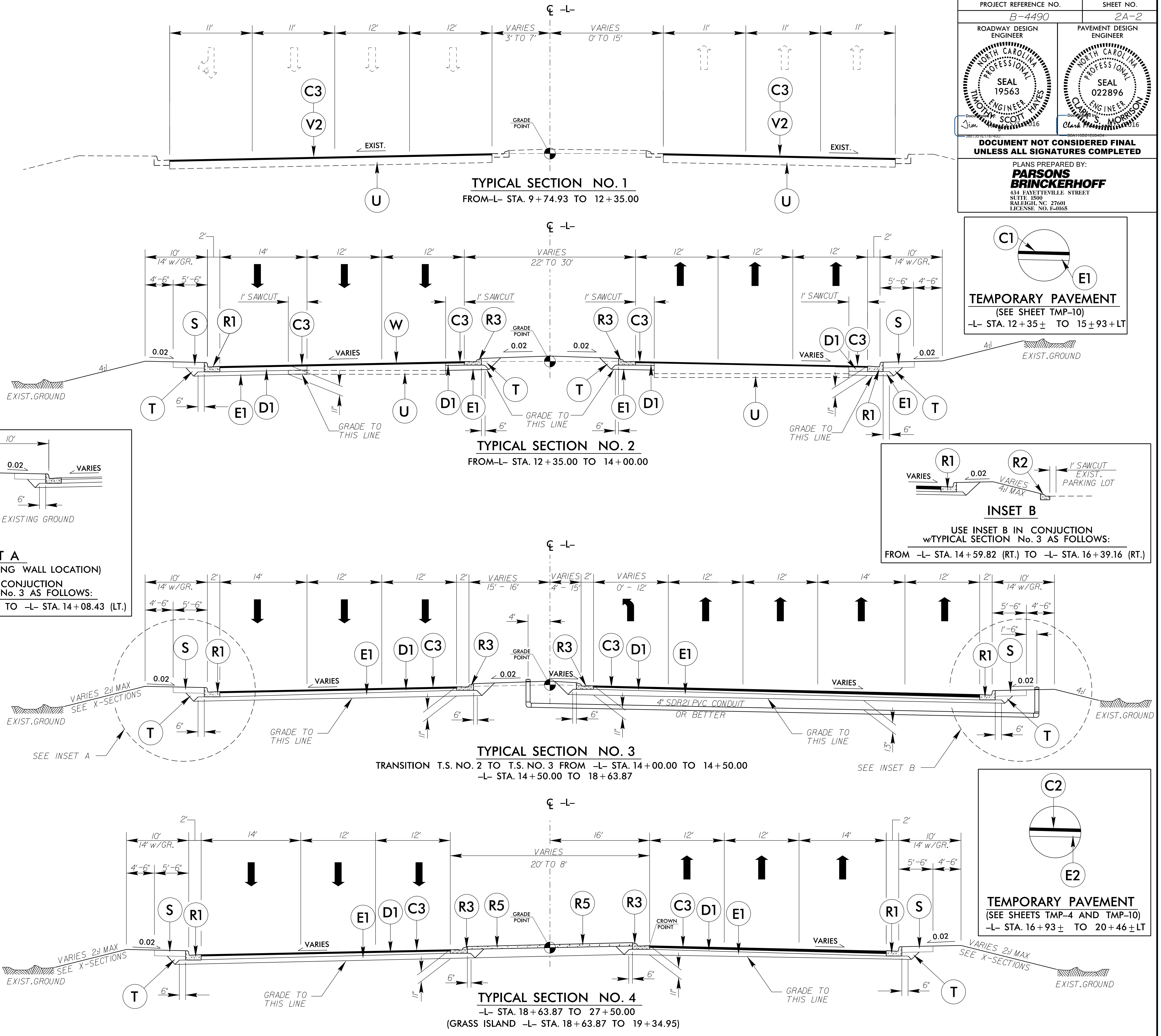
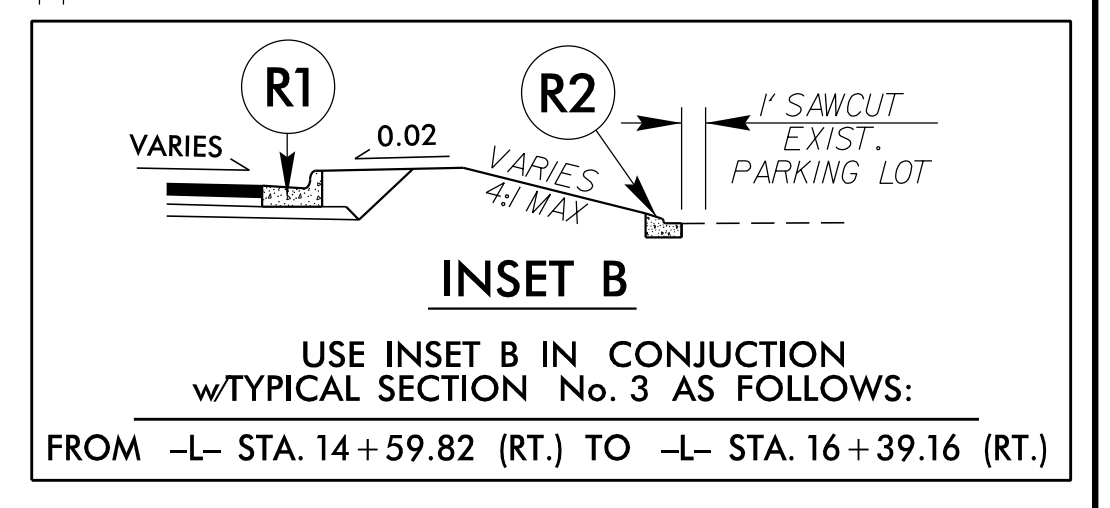
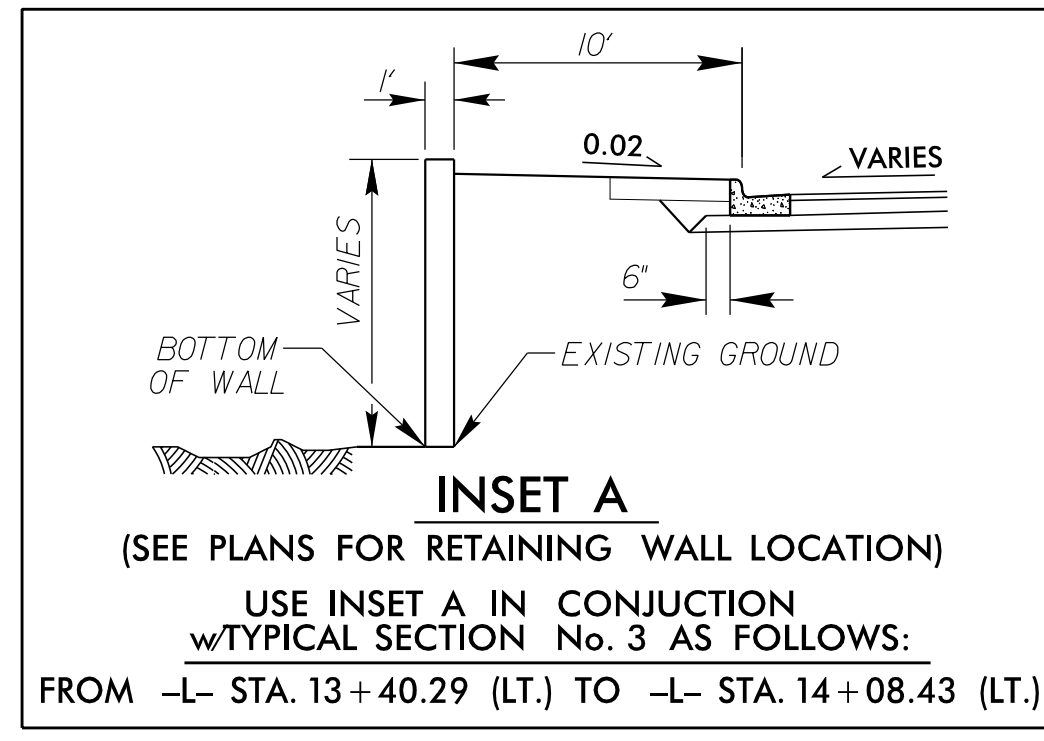


6/2/99

PAVEMENT SCHEDULE	
C1	1.5" TYPE S9.5B
C2	2" TYPE S9.5B
C3	3" TYPE S9.5B
C4	VAR. DEPTH TYPE S9.5B
D1	4" I19.0B
D2	VAR. DEPTH I19.0B
E1	4" TYPE B25.0B
E2	5 1/2" TYPE B25.0B
E3	VAR. DEPTH TYPE B25.0B
R1	2'-6" CONCRETE C&G
R2	1'-6" CONCRETE C&G
R3	2'-9" CONCRETE C&G
R4	5" MONOLITHIC STAMPED CONCRETE ISLAND
R5	4" STAMPED CONC. ISLAND COVER
S	4" CONCRETE SIDEWALK
T	EARTH MATERIAL
U	EXISTING PAVEMENT
V1	1.5" MILLING ASPHALT PAVEMENT
V2	3" MILLING ASPHALT PAVEMENT
W	WEDGING DETAIL

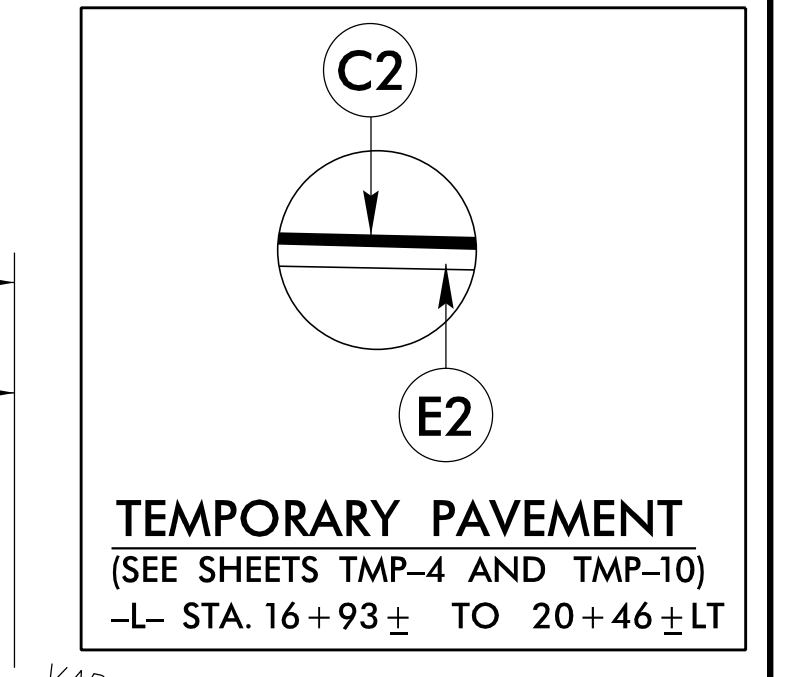
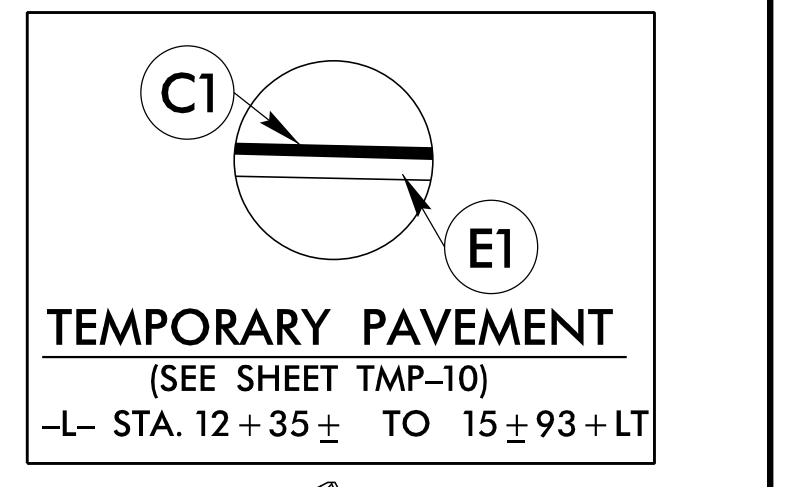
NOTE: LOCATION OF CONDUIT TO BE DETERMINED BY THE ENGINEER.



PROJECT REFERENCE NO. B-4490	SHEET NO. 2A-2
ROADWAY DESIGN ENGINEER TIMOTHY SCOTT SEAL 19563	PAVEMENT DESIGN ENGINEER CLAYTON MORRISON SEAL 022896

DOCUMENT NOT CONSIDERED FINAL  
 UNLESS ALL SIGNATURES COMPLETED

PLANS PREPARED BY:  
**PARSONS BRINCKERHOFF**  
 434 FAYETTEVILLE STREET  
 SUITE 1500  
 RALEIGH, NC 27601  
 LICENSE NO. E-0165



9:08:19 AM  
 B:\4101\101\101-101.dgn  
 6/3/2016