
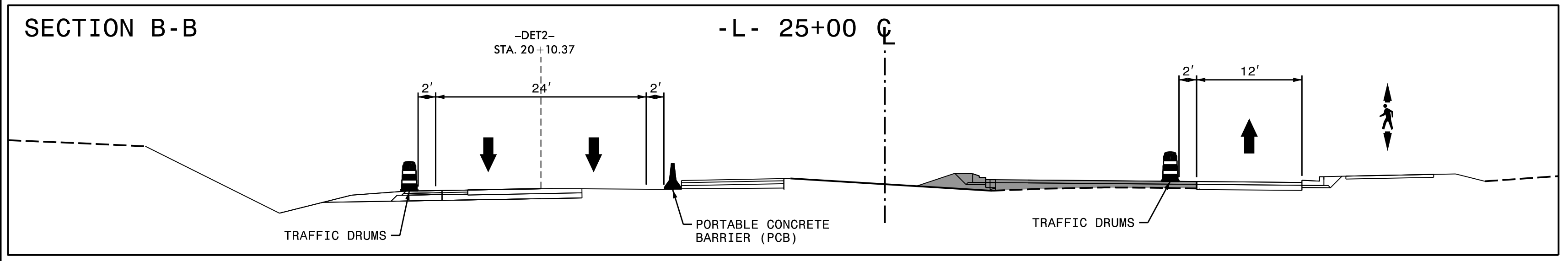
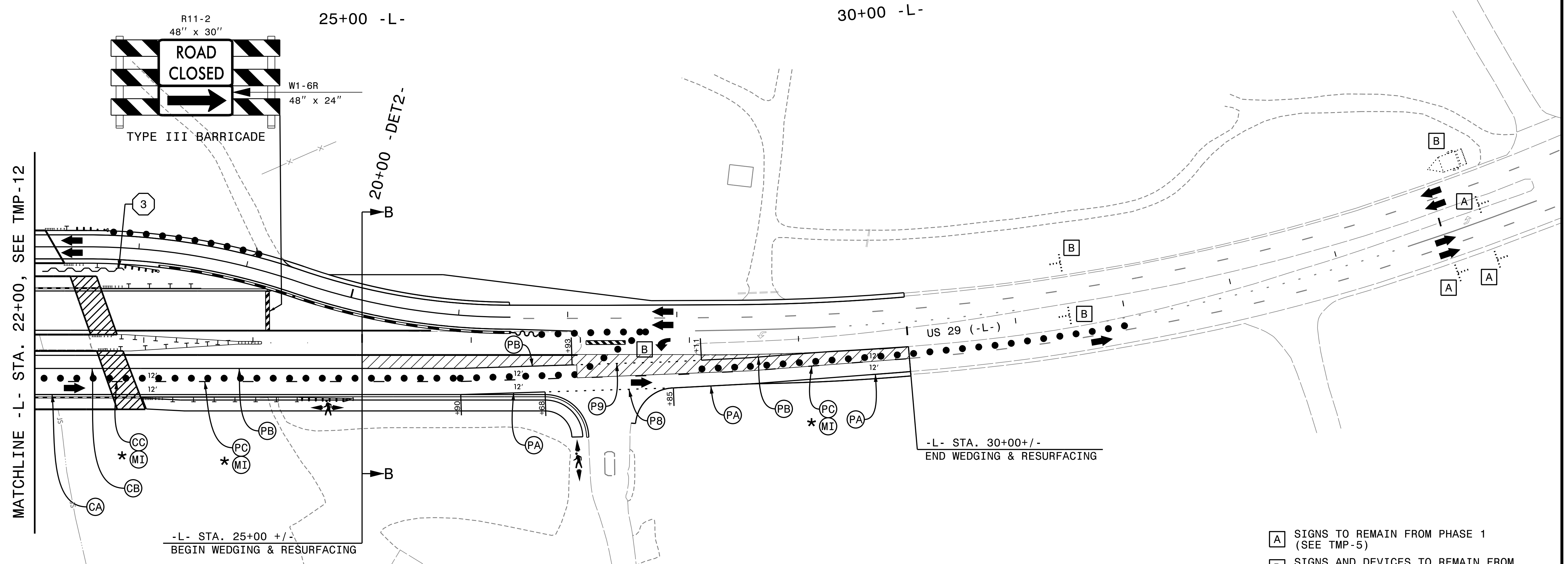


PROJ. REFERENCE NO. B-5123	SHEET NO. TMP-13
 HDR Engineering, Inc. of the Carolinas 555 Fayetteville St., Suite 900 Raleigh, N.C. 27601 N.C.B.E.L.S. License Number: F-0116	



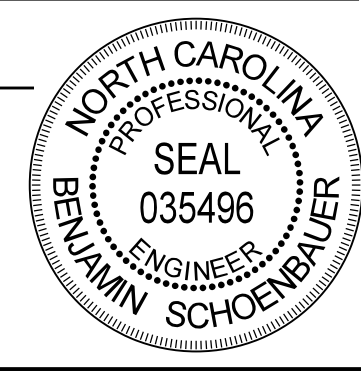
* PLACE CRYSTAL/RED TEMPORARY RAISED MARKERS (MI) @ 40' SPACING ALONG THE LANE LINE BETWEEN 10' SKIPS



- A** SIGNS TO REMAIN FROM PHASE 1 (SEE TMP-5)
 - B** SIGNS AND DEVICES TO REMAIN FROM PHASE 2 (SEE TMP-7)
 - C** SIGNS AND DEVICES TO REMAIN FROM PHASE 3, STEPS 1 & 2 (SEE TMP-9)
 - 3** TEMPORARY SHORING TO REMAIN FROM PHASE 2 (SEE TMP-7)
- SEE SHEET TMP-2A FOR TEMPORARY SHORING INFORMATION.

PLOT DRIVER: NCDOT_color_eng_50.pht
 USER: CHARNDEN
 DATE: 1/29/2016
 TIME: 9:44:17 AM
 FILE: p:\WPAPP\TPA01\SouthEast\Tampa\Documents\000166\CON0079159\CON0104476\000000000272555\6.0.CAD.BIM\6.2.Work_In_Progress\TrafficControl\TCP\B-5123_TC_TMP-13-Phase4a-2.dgn

APPROVED: *Ben Schoenauer*
 DATE: 1/29/2016



DOCUMENT NOT CONSIDERED FINAL UNLESS ALL SIGNATURES COMPLETED



PHASE 4
STEP 1