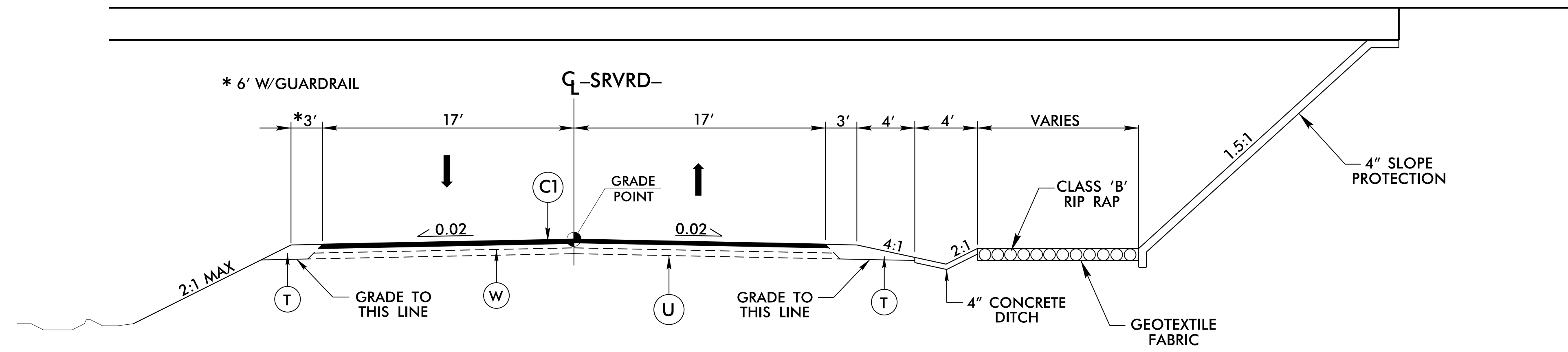
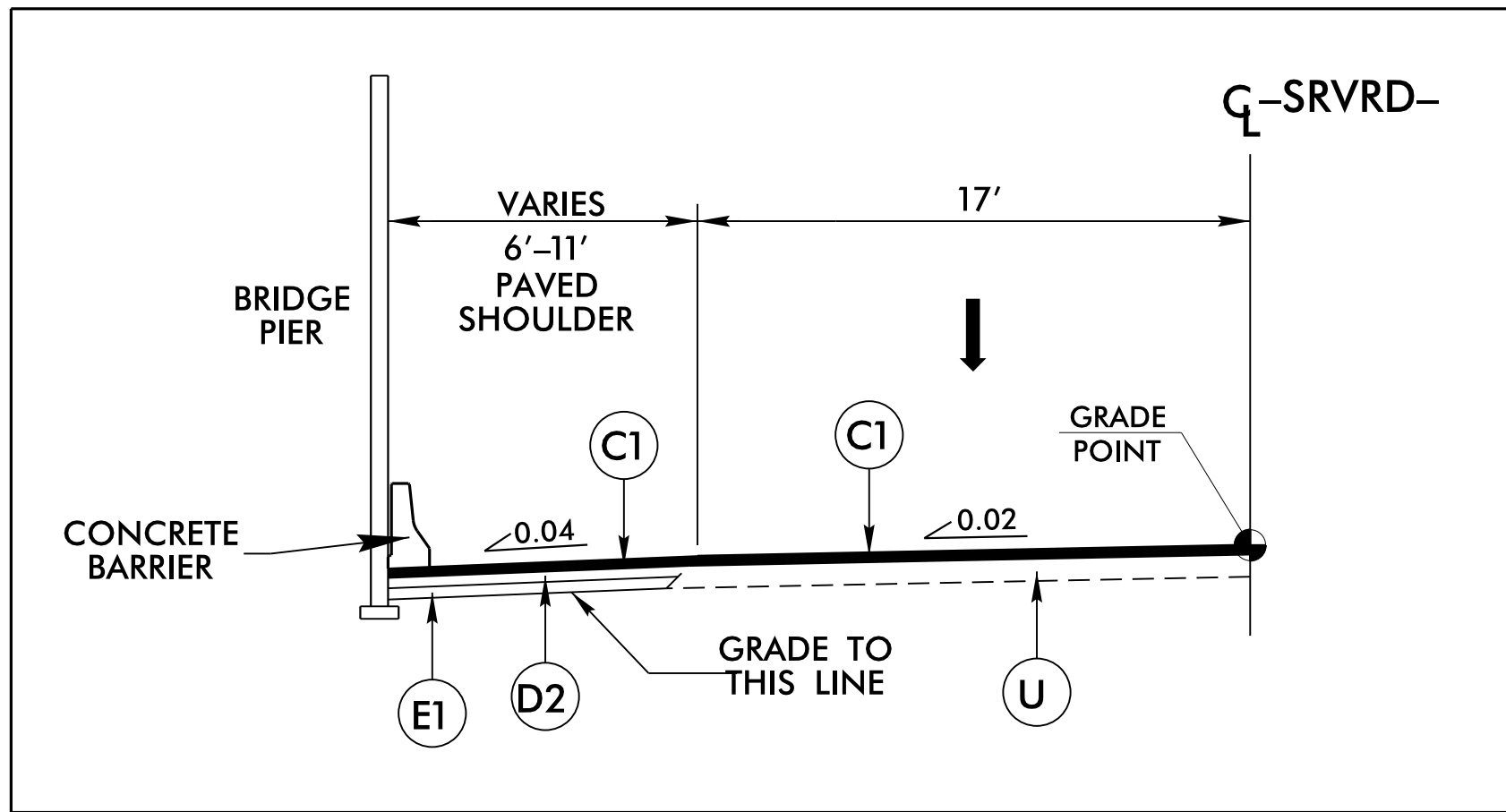


PROJECT REFERENCE NO. B-5123	SHEET NO. 2A-4
RW SHEET NO.	
ROADWAY DESIGN ENGINEER SEAL 025477 D. F. DUNCAN 3/2/2016	HYDRAULICS ENGINEER SEAL 022896 CLARK MORRISON 3/2/2016
<b>DOCUMENT NOT CONSIDERED FINAL UNLESS ALL SIGNATURES COMPLETED</b>	
PAVEMENT SCHEDULE	
C1	3" S9.5B
C2	1½" S9.5B
C3	VAR. S9.5B
D1	4" I19.0B
D2	2½" I19.0B
D3	VAR. I19.0B
E1	5" B25.0B
E2	7" B25.0B
E3	VAR. B25.0B
J1	8" ABC
J2	6" ABC
P	PRIME COAT
R1	1"-6" C & G
R2	2'-6" C & G
R3	CONC. SHOULDER BERM GUTTER
R4	5" CONC. ISLAND
S	4" CONC. MUTLIUSE PATH
T	EARTH MATERIAL
U	EXIST. PAVEMENT
W	WEDGING



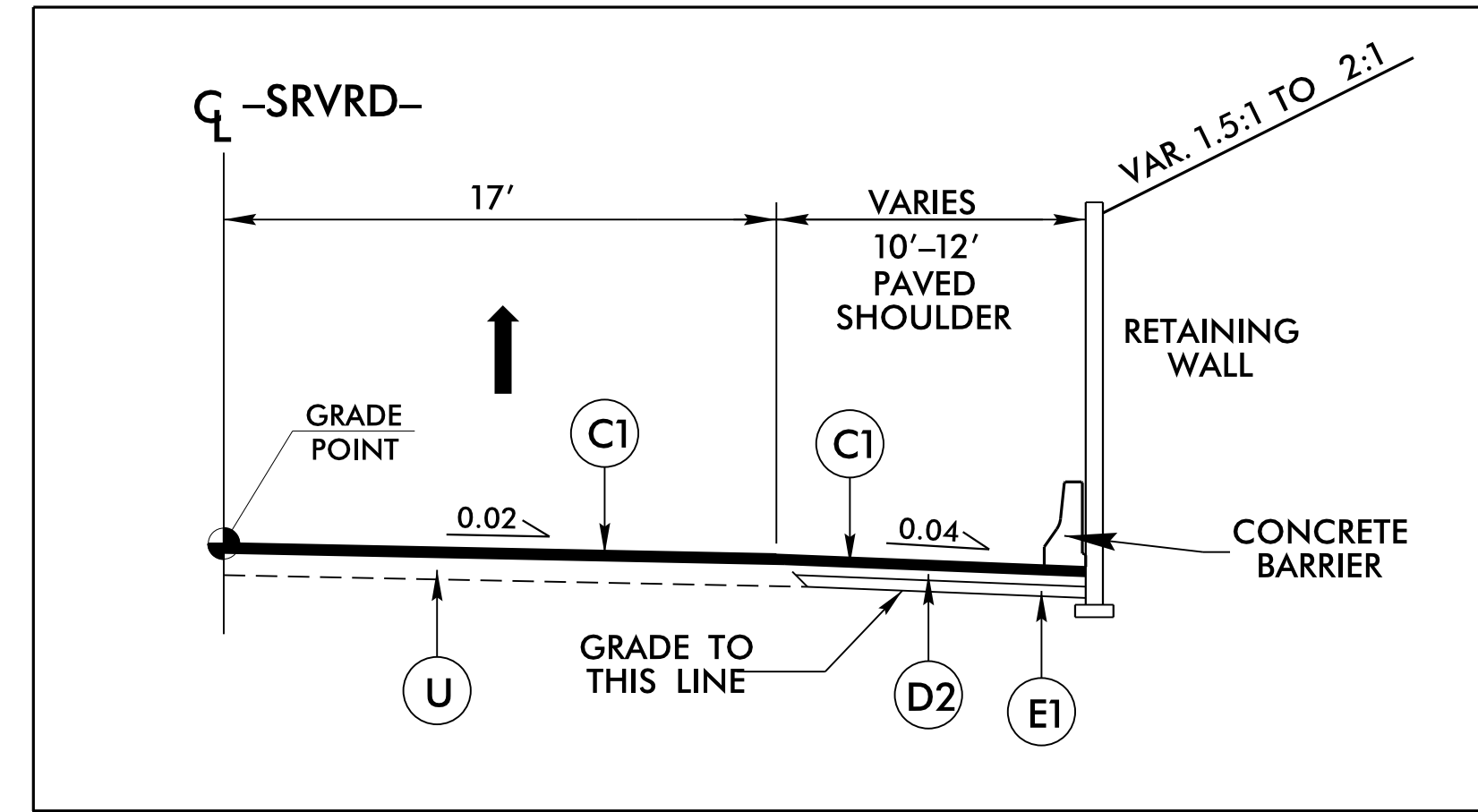
**DETAIL OF RIP RAP UNDER BRIDGE**  
-SRVRD- STA. 14+18.00 TO -SRVRD- STA. 15+90.00 RT.  
(USE WITH TYPICAL SECTION NO. 6)

**BRIDGE PIER DETAIL**

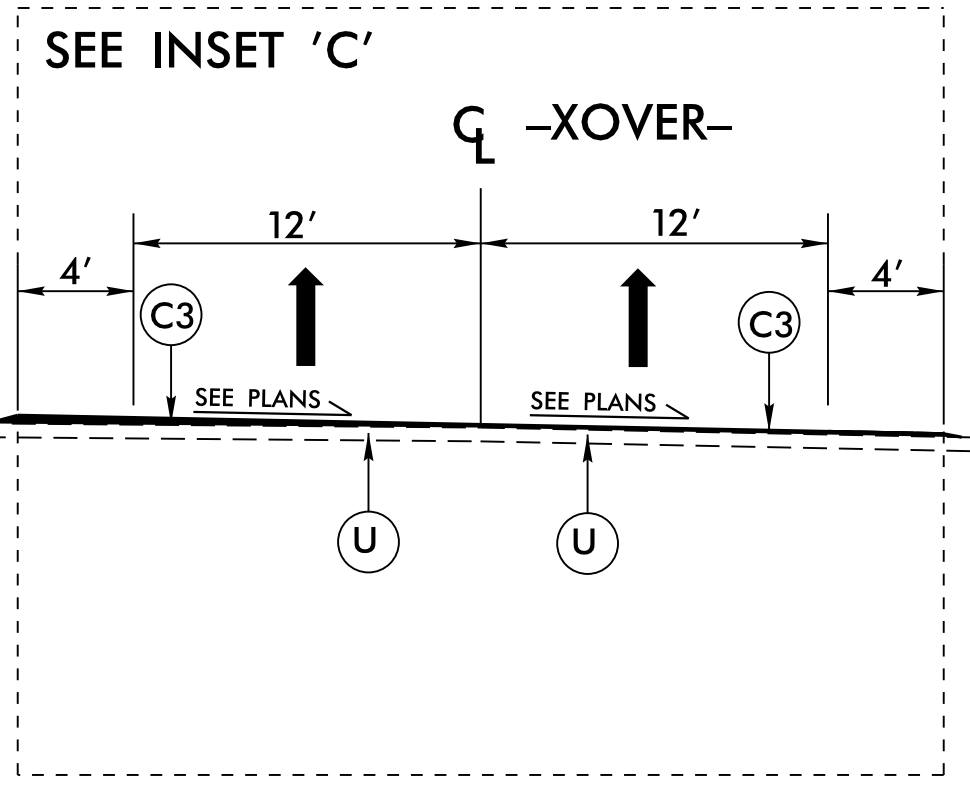


USE IN CONJUNCTION WITH TYPICAL SECTION NO. 6  
-SRVRD- STA. 14+73.20 LT TO -SRVRD- STA. 15+26.17 LT

**RETAINING WALL DETAIL**

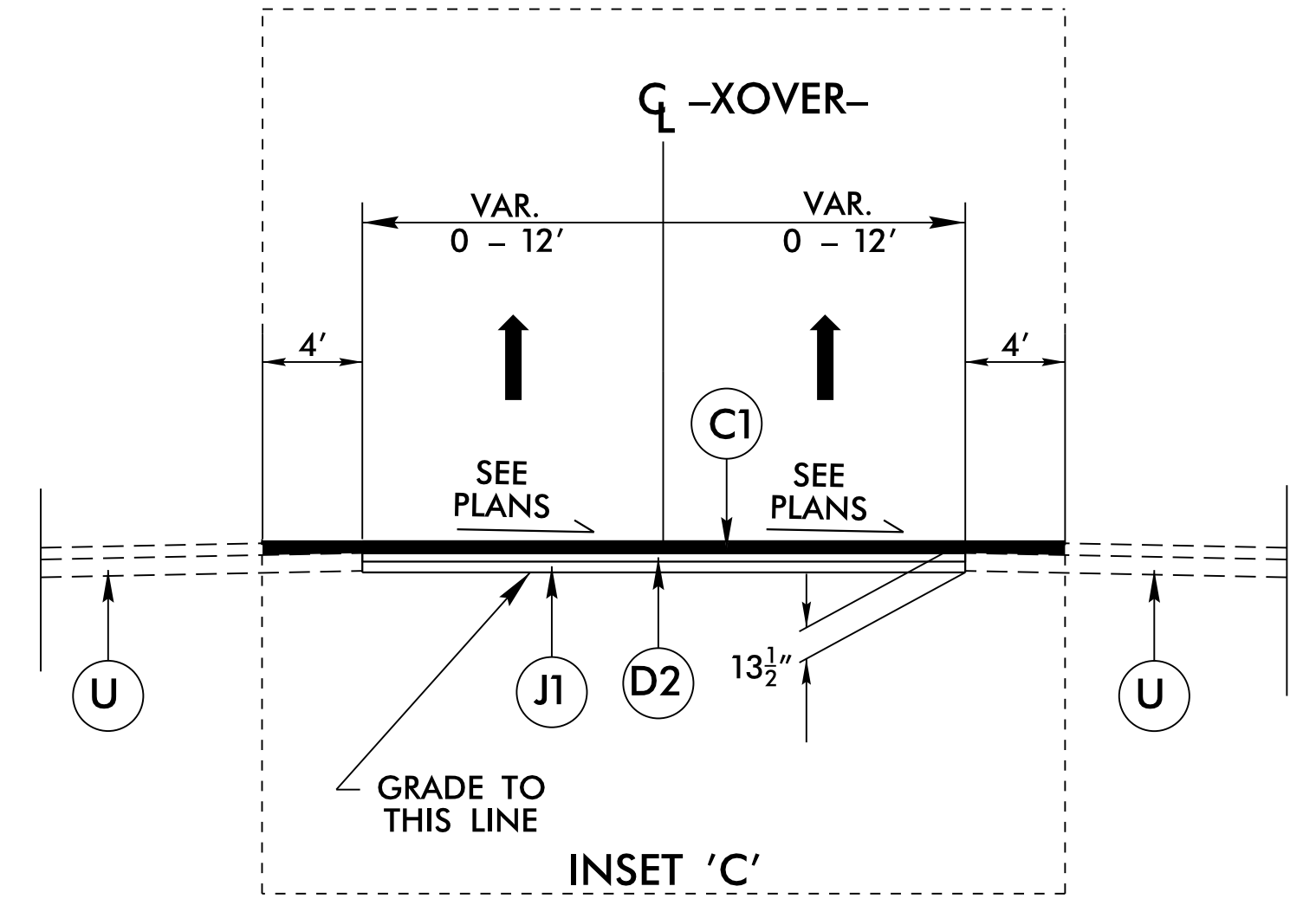


USE IN CONJUNCTION WITH TYPICAL SECTION NO. 6  
-SRVRD- STA. 13+06.78 RT TO -SRVRD- STA. 14+11.13 RT



**TEMPORARY MEDIAN CROSSOVER**

-L- STA. 14+00.00 TO -L- STA. 18+30.44  
-L- STA. 23+52.32 TO -L- STA. 28+38.37



USE INSET 'C' IN CONJUNCTION  
WITH TEMPORARY MEDIAN CROSSOVER

REVISIONS

8/17/99

02-MAR-2016 10:56 P-5123-Rdy-tyr.dgn  
3:58:05 PM