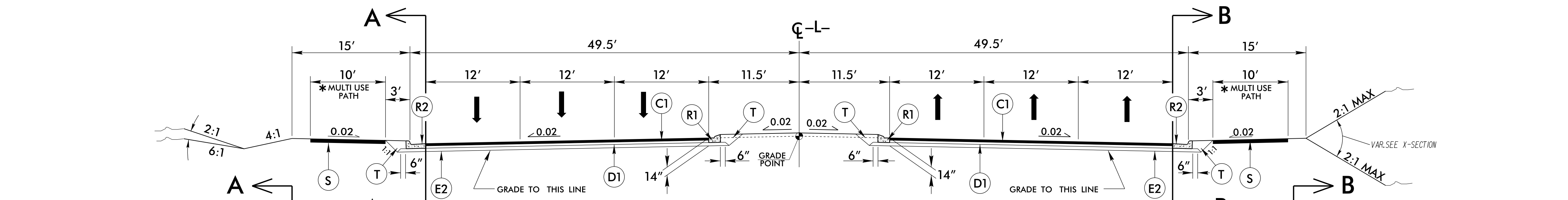


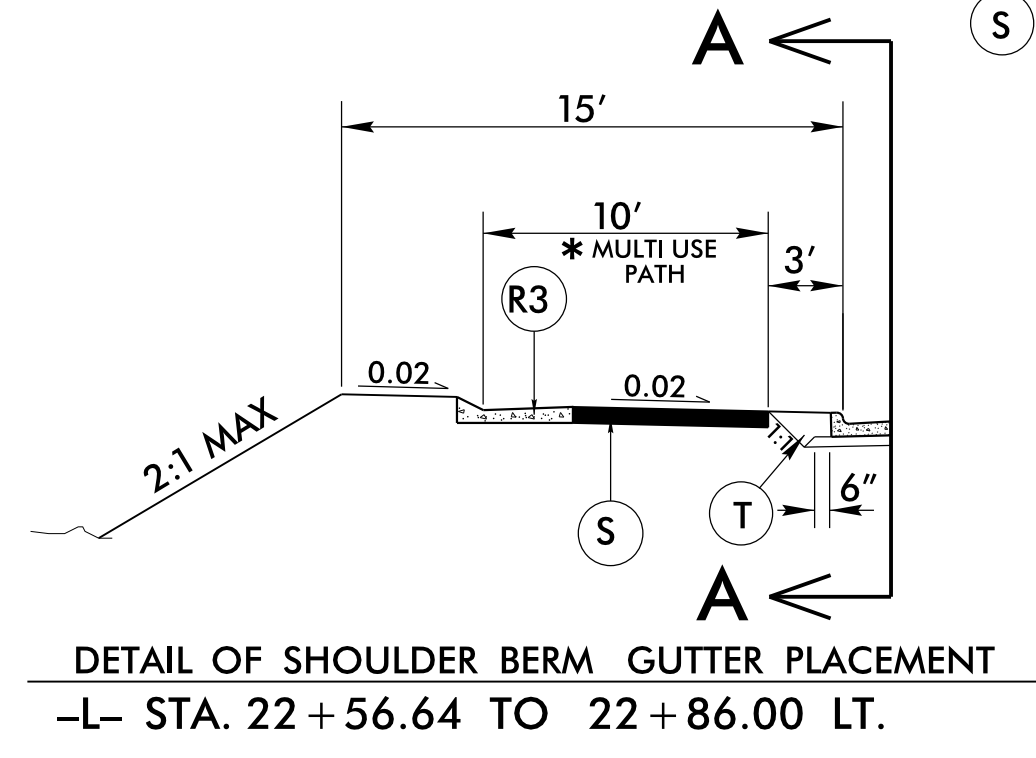
DOCUMENT NOT CONSIDERED FINAL
UNLESS ALL SIGNATURES COMPLETED

PAVEMENT SCHEDULE

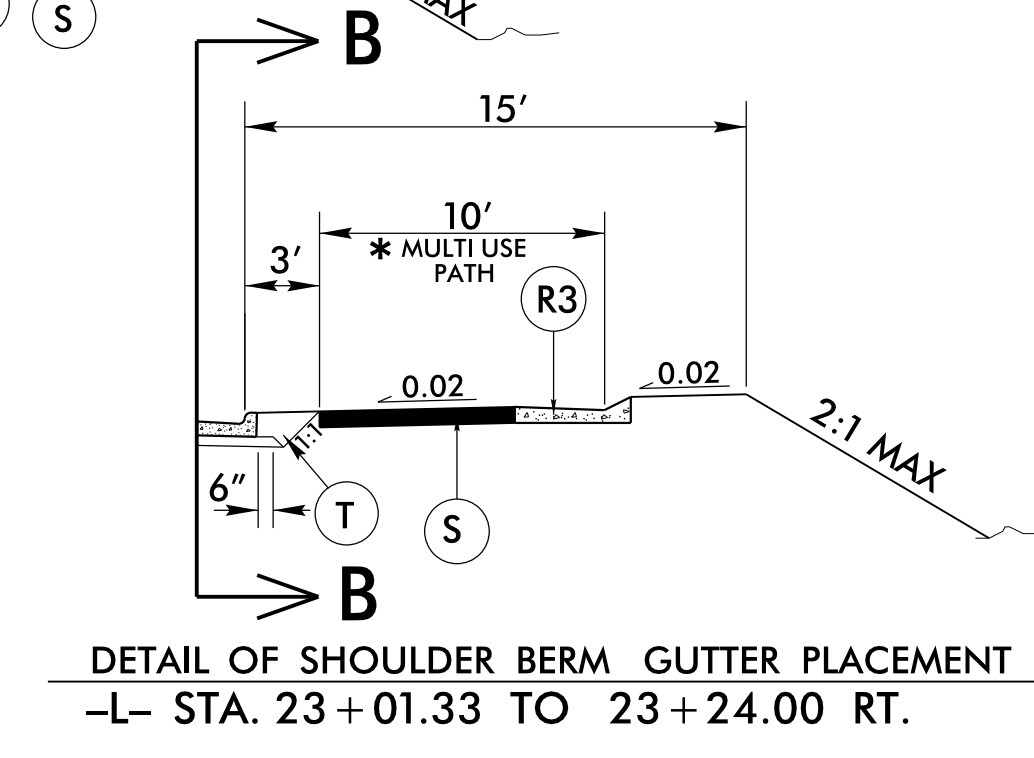
C1	3" S9.5B
C2	1 1/2" S9.5B
C3	VAR. S9.5B
D1	4" I19.0B
D2	2 1/2" I19.0B
D3	VAR. I19.0B
E1	5" B25.0B
E2	7" B25.0B
E3	VAR. B25.0B
J1	8" ABC
J2	6" ABC
P	PRIME COAT
R1	1"-6" C & G
R2	2'-6" C & G
R3	CONC. SHOULDER BERM GUTTER
R4	5" CONC. ISLAND
S	4" CONC. MUTLIUSE PATH
T	EARTH MATERIAL
U	EXIST. PAVEMENT
W	WEDGING



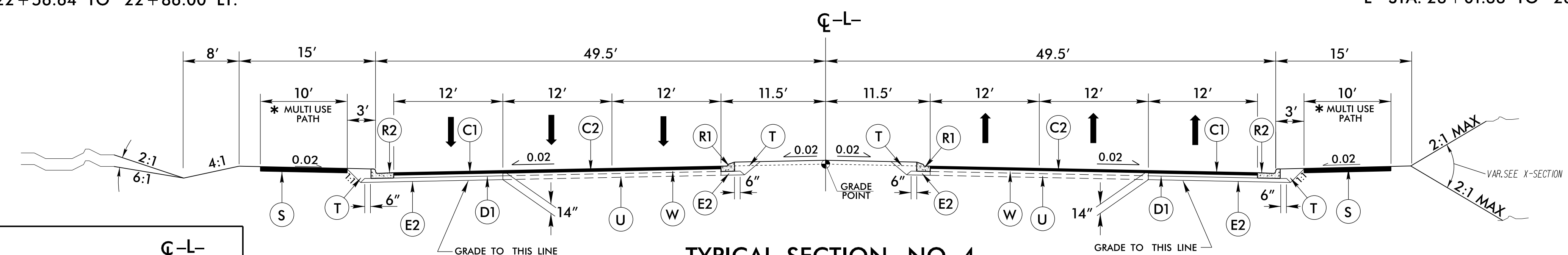
TYPICAL SECTION NO. 3
 -L- STA. 16+50.00 TO -L- STA. 20+34.11 (BEGIN BRIDGE)
 -L- STA. 22+54.11 (END BRIDGE) TO -L- STA. 25+50.00



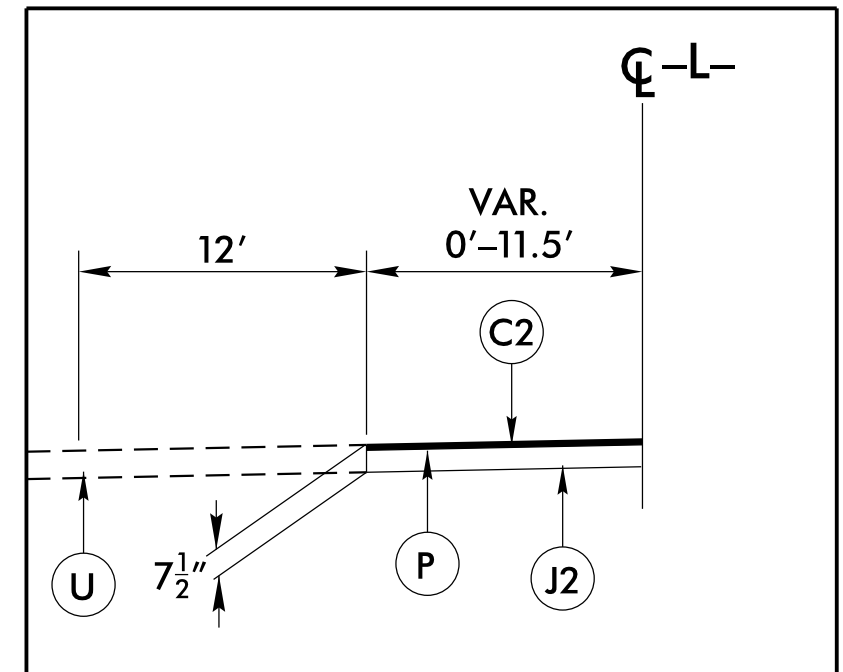
DETAIL OF SHOULDER BERM GUTTER PLACEMENT
 -L- STA. 22+56.64 TO 22+86.00 LT.



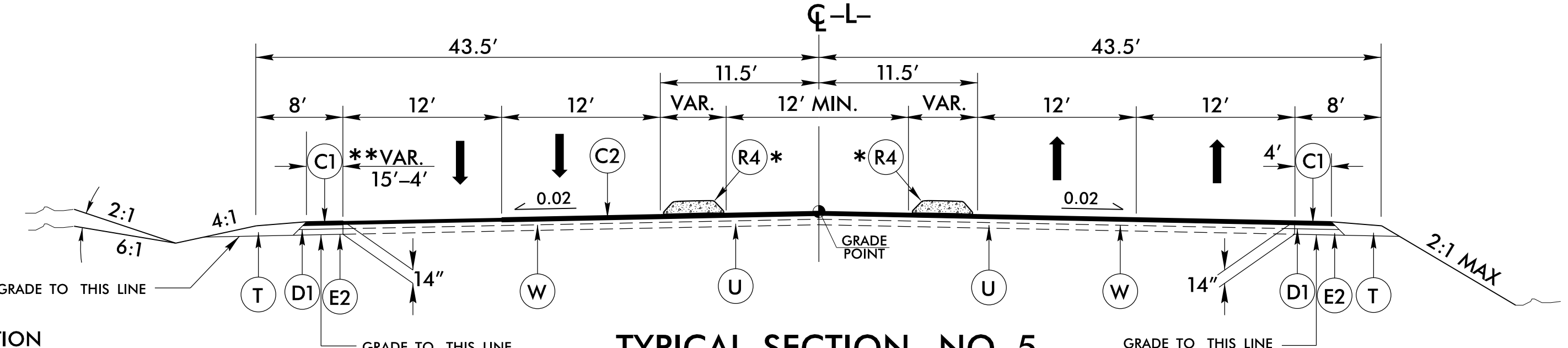
DETAIL OF SHOULDER BERM GUTTER PLACEMENT
 -L- STA. 23+01.33 TO 23+24.00 RT.



TYPICAL SECTION NO. 4
 -L- STA. 25+50.00 TO -L- STA. 26+97.25

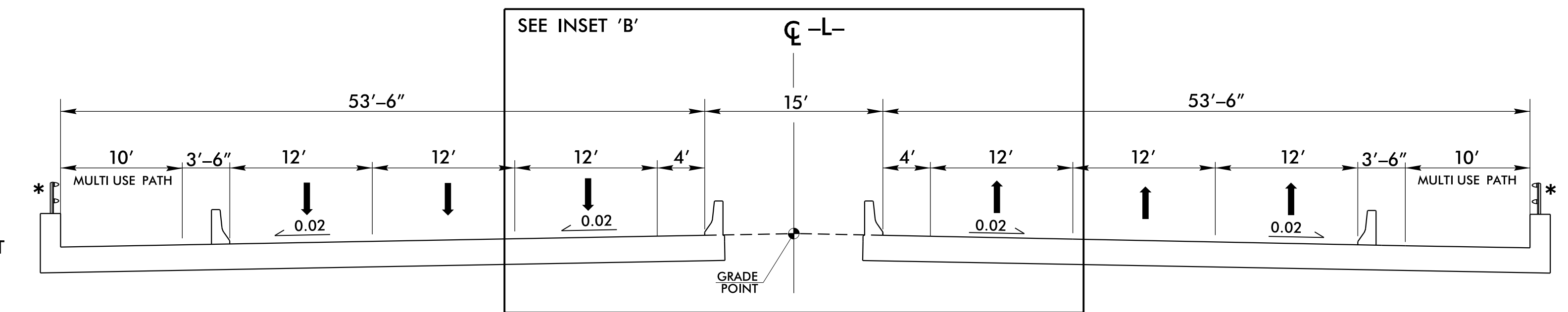


TEMPORARY PAVEMENT FOR PORTABLE CONCRETE BARRIER LOCATED IN MEDIAN
 -L- STA. 25+70 +/- LT TO -L- STA. 27+02 +/- LT
 SEE TMP PLANS

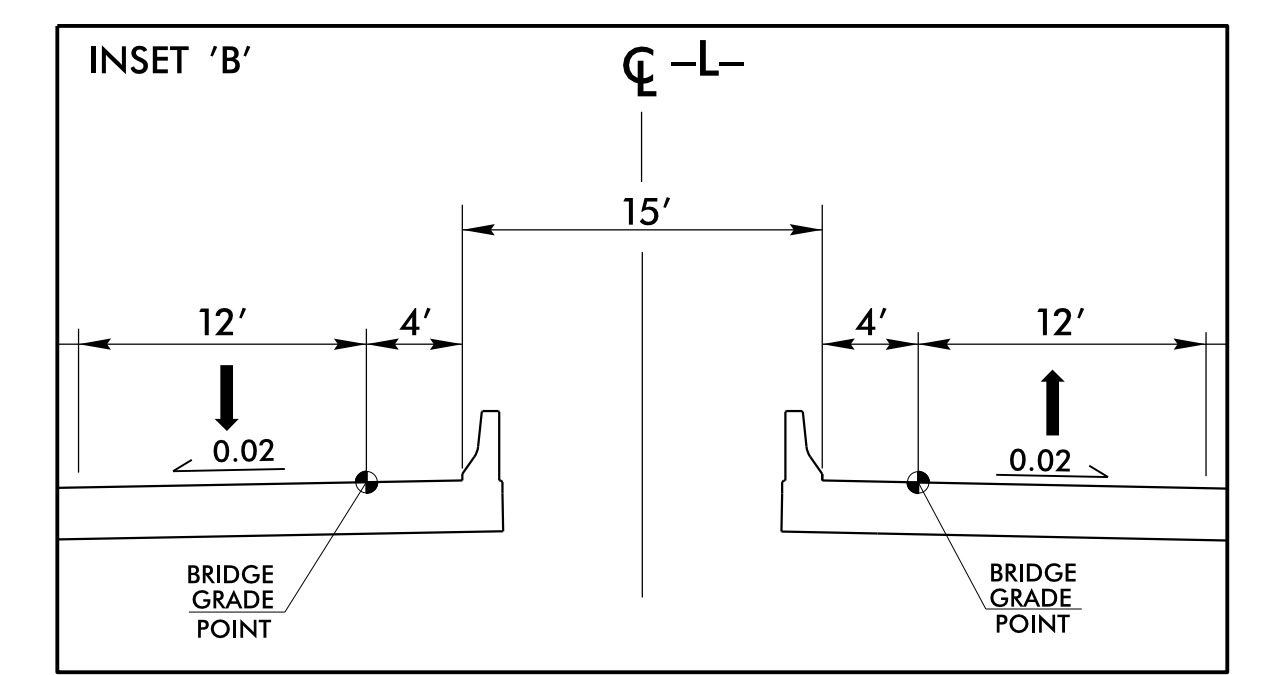


TYPICAL SECTION NO. 5
 -L- STA. 26+97.25 TO -L- STA. 30+00.00

* SEE PLANS FOR ISLAND LOCATION
 ** SEE PLANS FOR PAVED SHOULDER TRANSITION



BRIDGE SECTION
 -L- STA. 20+34.11 (BEGIN BRIDGE) TO -L- STA. 22+54.11 (END BRIDGE)



GRADE POINT SHOWN AT MEDIAN EDGE OF TRAVEL
 SEE SHEET 6 FOR GRADE INSET
 -L- STA. 20+34.11 (BEGIN BRIDGE) TO -L- STA. 22+54.11 (END BRIDGE)

REVISIONS

8/17/99

19-FEB-2016 09:11 A B-5123-Rdy-tyr.dgn
 3:38:05 PM